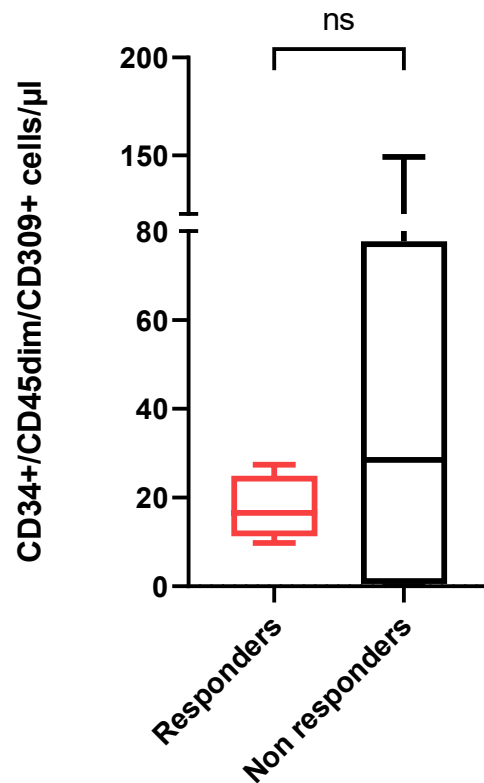


Supplementary Table 1. List of flow cytometry specificities and reagents for cellular analysis of circulating endothelial cells, circulating endothelial progenitors and their subsets.

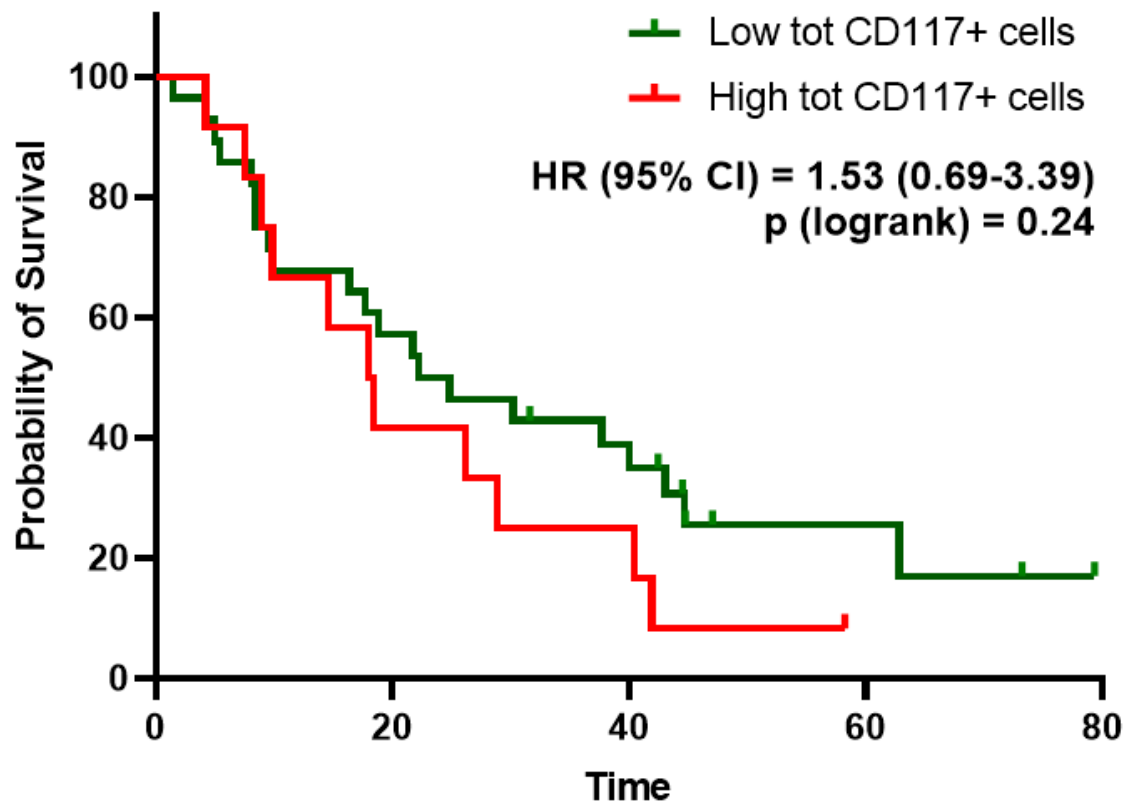
Reagent	Fluorochrome	Vendor	Clone	Cat. Number	Volume/ test (µl)
7-AAD	-	BD Biosciences	-	555815	10
Syto16	-	Thermo Fisher Scientific	-	S-7578	1uM
CD34	PE-Cy7	BD Biosciences	8G12	348811	10
CD45	APC-H7	BD Biosciences	2D1	560178	10
CD117	BV421	BD Biosciences	YB5.B8	562434	5
Annexin V	BV510	BD Biosciences	-	561501	5
CD309	APC	BD Biosciences	89106	560495	20
CD146	PE	BD Biosciences	P1H12	550315	40
7-AAD: 7-Aminoactinomycin D; PE					



Supplementary Figure 1. Blood levels of CD34+/CD45dim/CD309+ cells in responders and non-responders to antiangiogenic treatments. Box plots illustrating median blood concentration of CD34+CD45dimCD309+ cells in responder and non-responders to antiangiogenic-based therapies. Statistical comparison was performed using the Mann-Whitney U test.

Supplementary Table 2. Spearman rank correlation coefficients between blood CD34+CD45dim cell subsets and selected clinical-pathological features in patients with mCRC (n=40)

	CD34+/CD45dim/CD117+ cells/ul		CD34+/CD45dim/CD117+/AnnV- cells/ul	
	Correlation coefficient	Sig. (2-tailed)	Correlation coefficient	Sig. (2-tailed)
Sex	0.172	0.29	0.095	0.56
ECOG PS	0.023	0.89	-0.093	0.57
Age	0.035	0.83	-0.095	0.56
BMI	-0.029	0.86	0.043	0.79
Diabetes	0.157	0.35	0.134	0.43
Arterial Hypertension	-0.022	0.90	0.043	0.80
CVD	-0.045	0.81	0.022	0.90
Primary tumour location	-0.075	0.64	-0.118	0.47
Tumour grading	0.221	0.18	0.131	0.42
KRAS mutational status	0.000	1.00	0.035	0.83
Liver metastasis	-0.108	0.51	-0.027	0.87
Lung metastasis	0.321*	0.04	0.298	0.06
CEA	-0.169	0.30	-0.193	0.23
Previous line of therapy	0.064	0.70	0.075	0.65
Number of metastatic sites	0.270	0.09	0.337*	0.03



Supplementary Figure 2. Overall survival according to blood levels of CD34+/CD45dim/CD117+ cells. Kaplan–Meier (KM) curves showing the relationship between overall survival and blood concentration of total CD34+/CD45dim/CD117+ cells. The logrank test was used for statistical comparisons.