

Supplementary information

# Solvent Influence on Selectivity in $\alpha$ -Pinene Oxide Isomerization Using MoO<sub>3</sub>-Modified Zeolite BETA

Eva Vrbková <sup>1,\*</sup>, Eliška Vyskočilová <sup>1</sup>, Miloslav Lhotka <sup>2</sup> and Libor Červený <sup>1</sup>

<sup>1</sup> Department of Organic Technology, University of Chemistry and Technology, Prague 16628, Czech Republic; eva.vrbkova@vscht.cz (E.V.); eliska.vyskocilova@vscht.cz (E.V.); libor.cerveny@vscht.cz (L.Č.)

<sup>2</sup> Department of Inorganic Technology, University of Chemistry and Technology, Prague 16628, Czech Republic; miloslav.lhotka@vscht.cz (M.L.)

\* Correspondence: eva.vrbkova@vscht.cz; Tel.: +420-220-444-220

## 1. SEM images

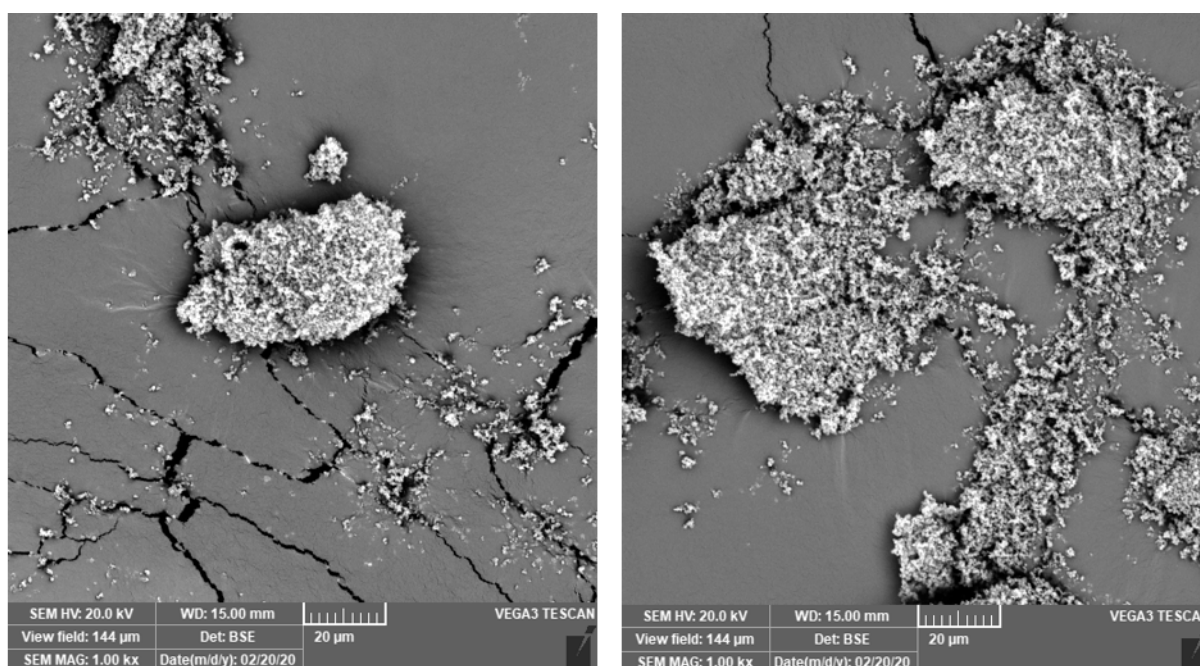


Figure S1. SEM images of BETA38.

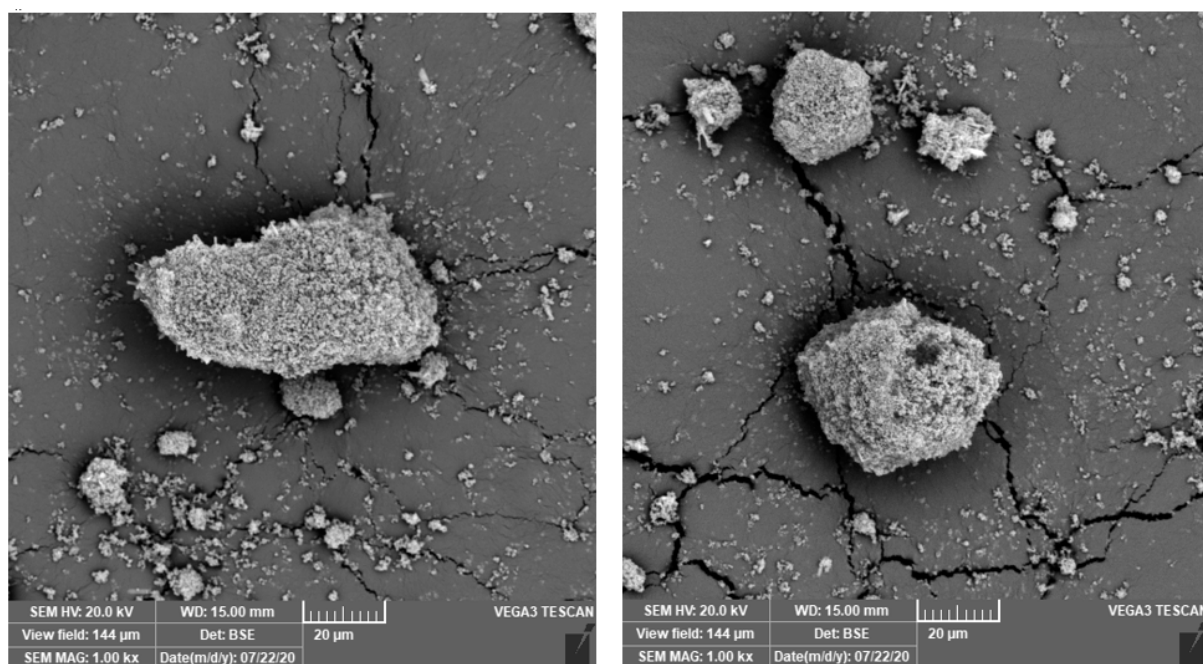


Figure S2. SEM images of 20Mo450.

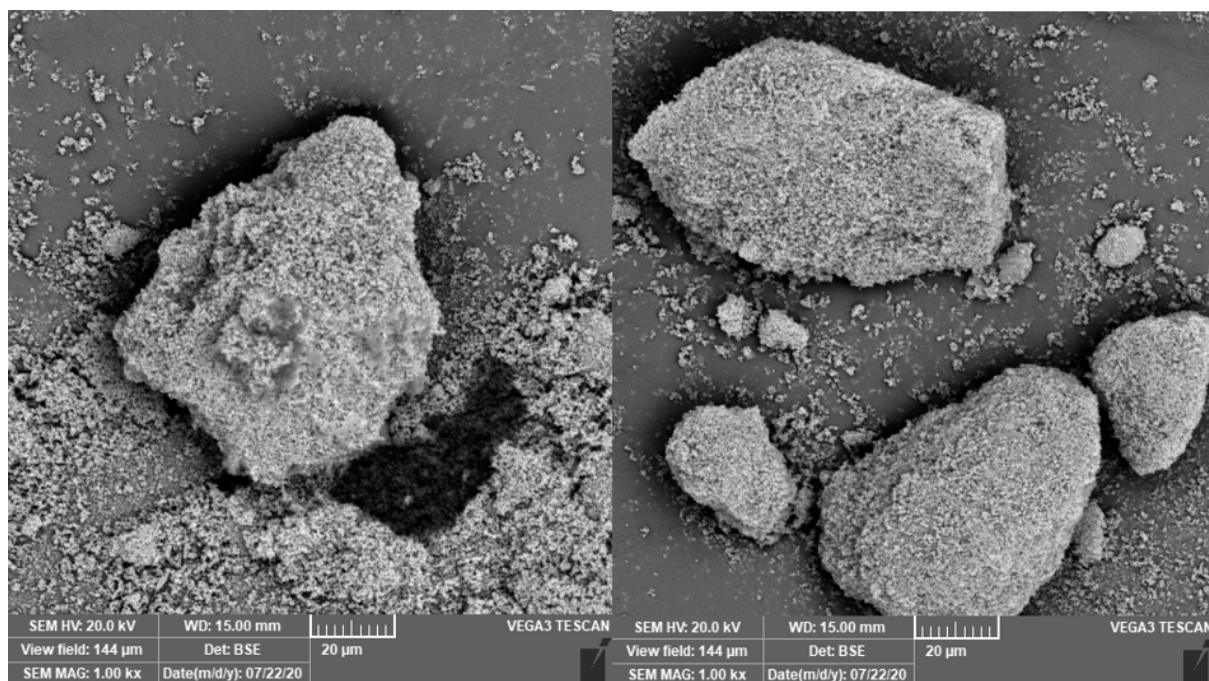


Figure S3. SEM images of 20Mo600.

## 2. Example of reaction course

PCY – *p*-cymene, APO –  $\alpha$ -pinene oxide, CA – campholenic aldehyde, TCV – *trans*-carveol, PMD – *p*-methadien-2-ol, SOB – sobreol

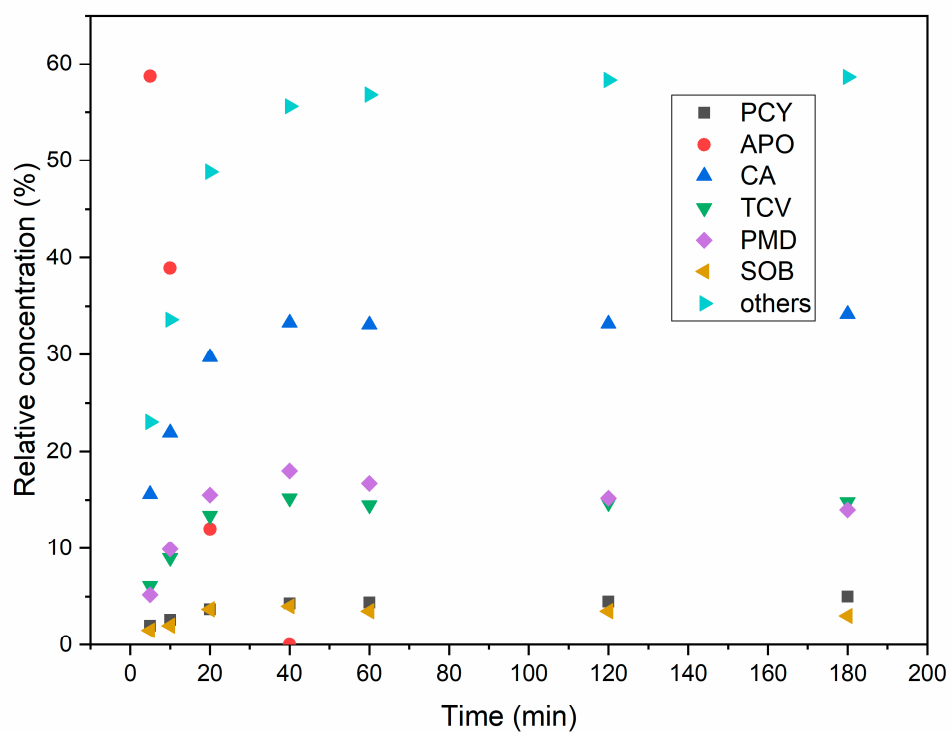


Figure S4. Reaction course using solvent toluene (catalyst 20Mo450, 70°C).

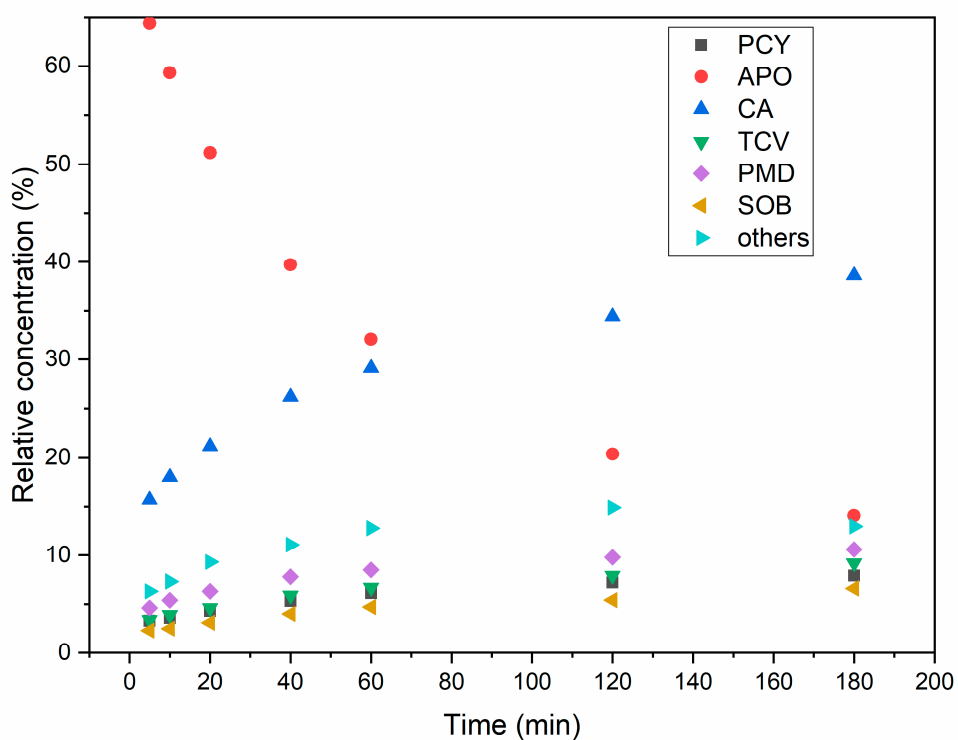


Figure S5. Reaction course using solvent nitromethane (catalyst 20Mo450, 70°C).

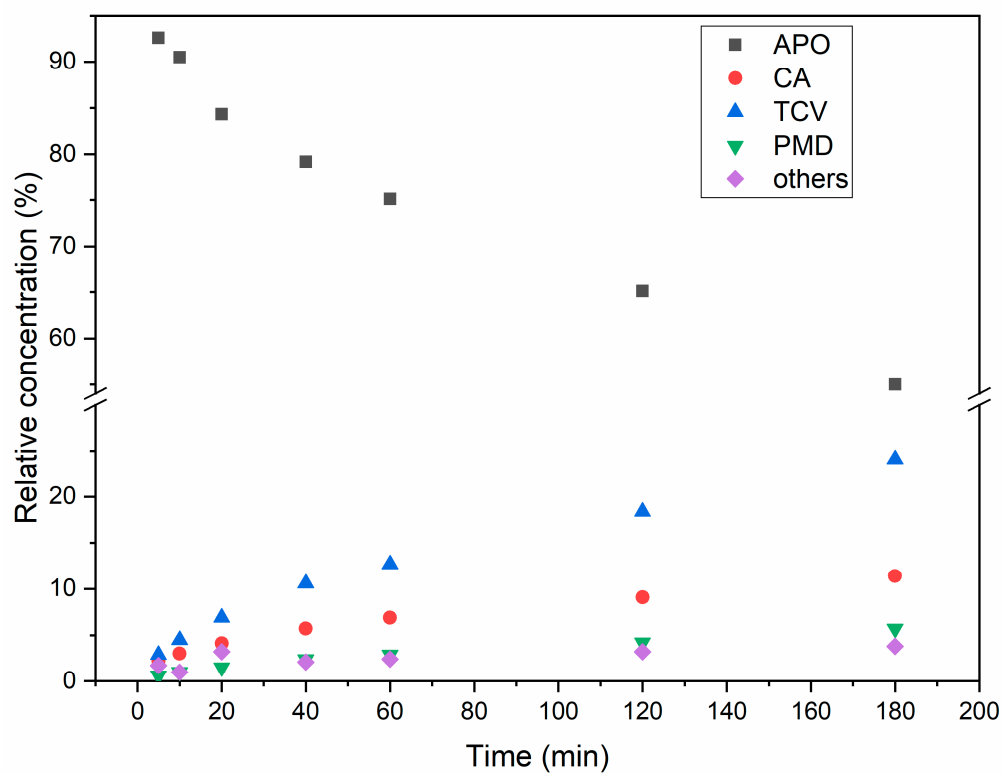


Figure S6. Reaction course using solvent dimethylsulfoxide (catalyst 20Mo450, 70°C).

### 3. Chromatogram

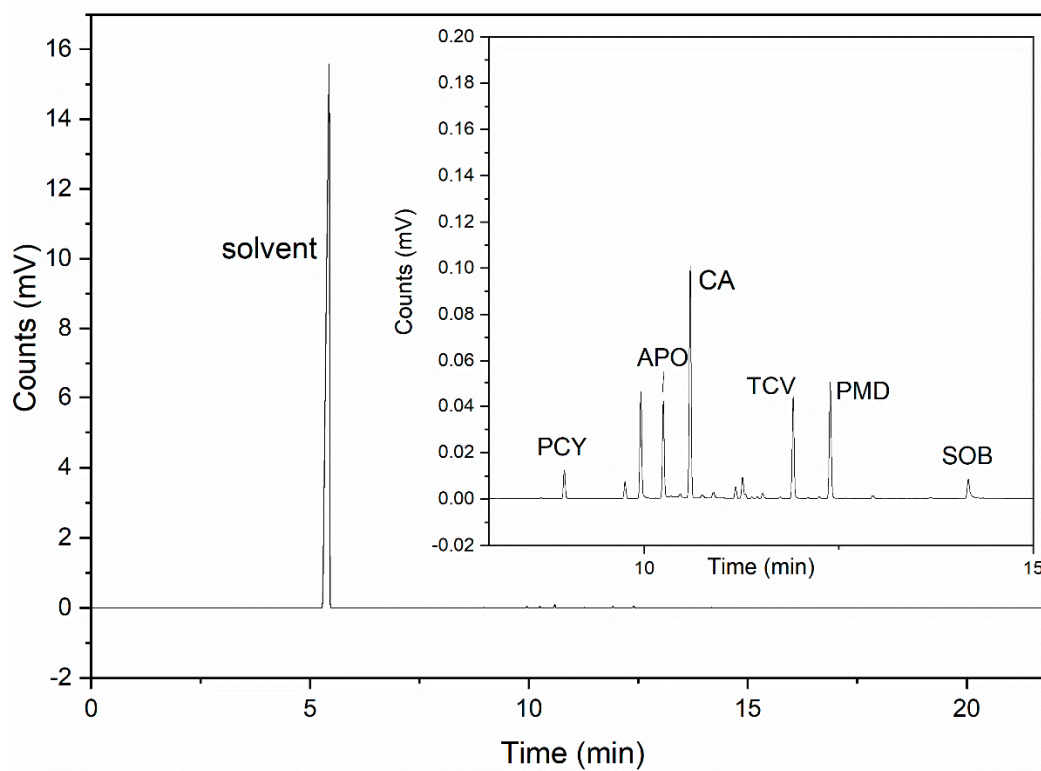


Figure S7. Representative chromatogram of reaction mixture (solvent toluene).



© 2020 by the authors. Submitted for possible open access publication under the terms and conditions of the Creative Commons Attribution (CC BY) license (<http://creativecommons.org/licenses/by/4.0/>).