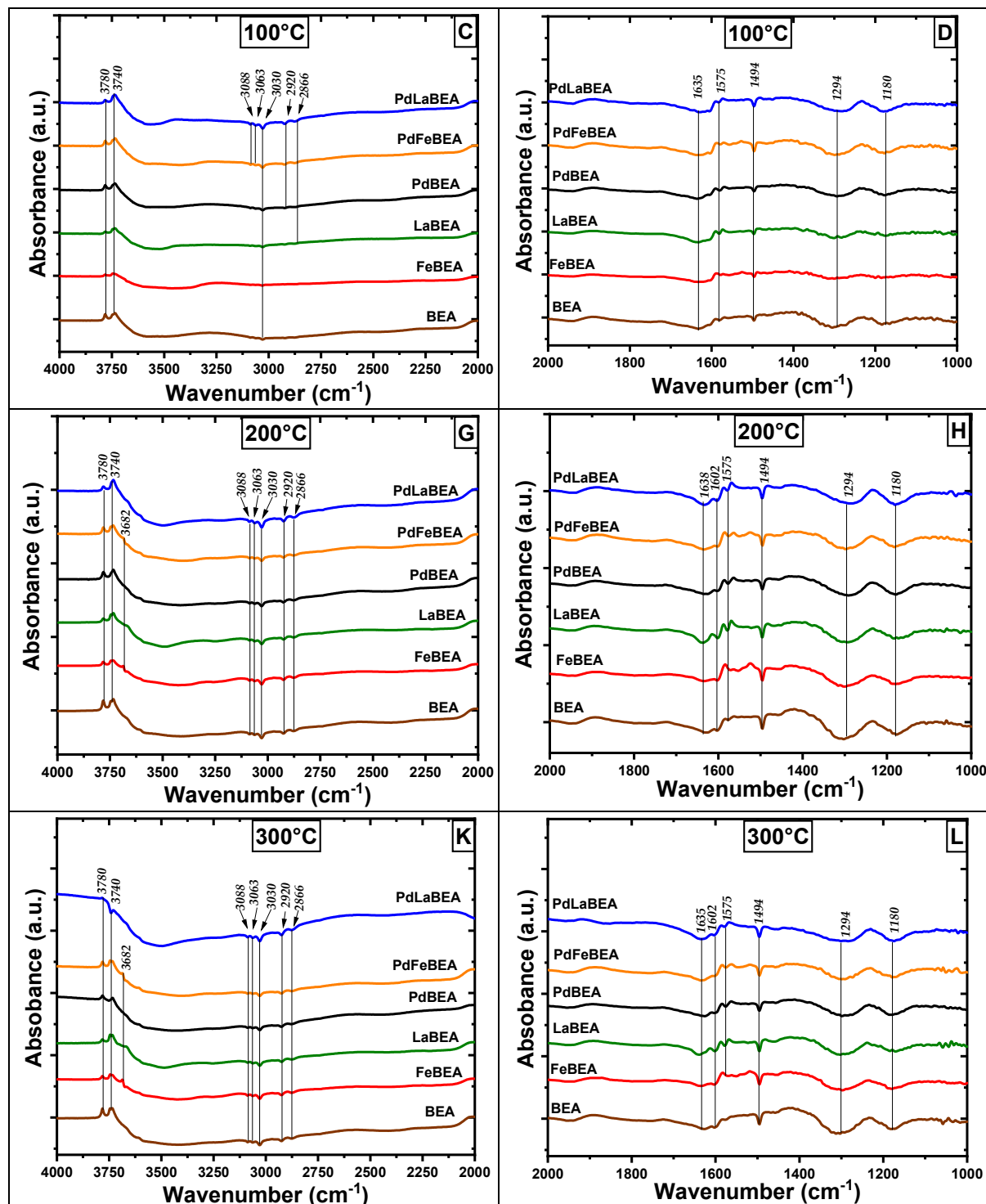


# Supplementary Material: Zeolite Beta Doped with La, Fe, and Pd as a Hydrocarbon Trap

Rasmus Jonsson, Jungwon Woo, Magnus Skoglundh, and Louise Olsson



**Figure S1.** DRIFTS spectra during dry-toluene-TPD experiments. A stepwise measurement from 100–300 °C with only argon present in the gas feed. Panels C, G and K show the wavenumber region 4000–2000 cm<sup>-1</sup>. Panels D, H and L show the wavenumber region 2000–1000 cm<sup>-1</sup>.