

Supplementary Materials: Ru Nanoparticles Embedded in Cubic Mesoporous Silica SBA-1 as Highly Efficient Catalysts for Hydrogen Generation from Ammonia Borane

Juti Rani Deka¹, Diganta Saikia², Kuo-Shu Hsia², Hsien-Ming Kao^{2,*}, Yung-Chin Yang^{1,*} and Ching-Shiun Chen^{3,4,*}

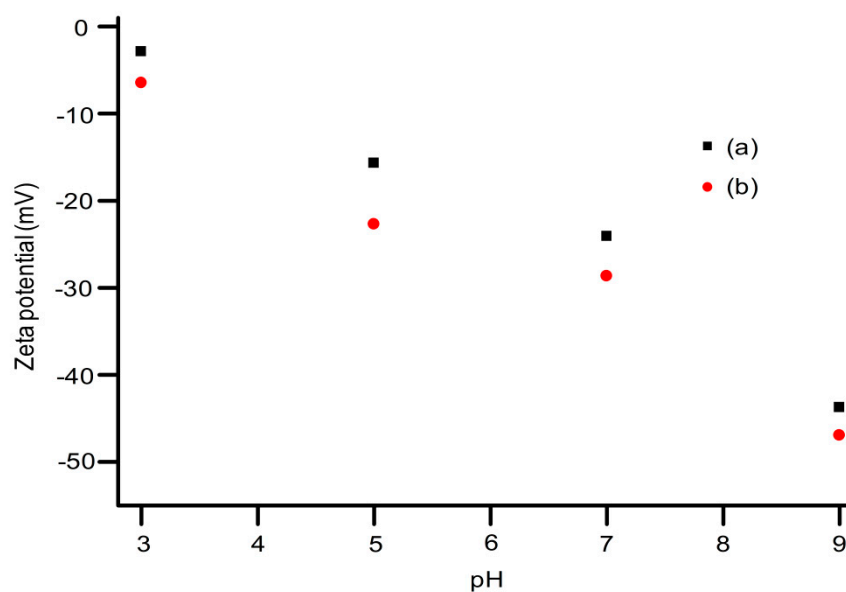


Figure S1. Zeta potentials of (a) S1B-C0 and (b) S1B-C10.

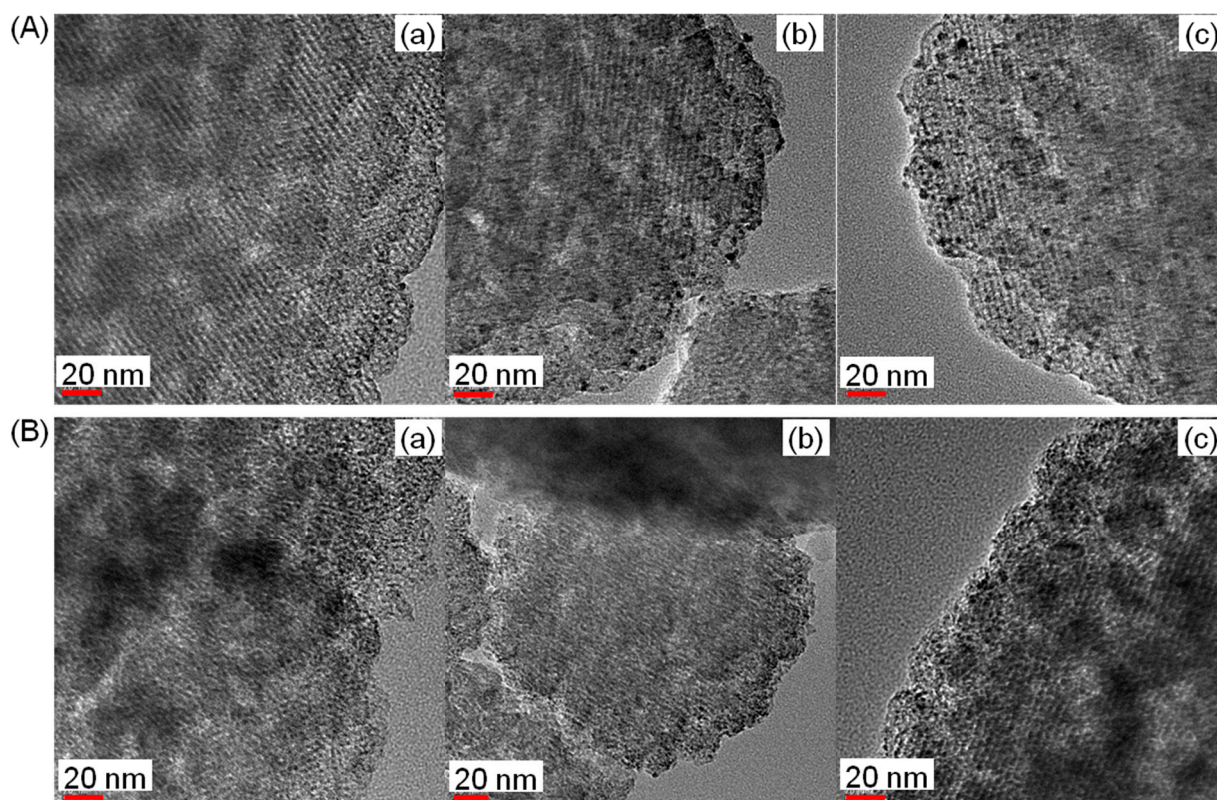


Figure S2. High magnification HRTEM images of (A) Ru(x)@S1B-C0 and (B) Ru(x)@S1B-C10, where x = (a) 0.5, (b) 1.0, and (c) 2.0 wt.%.

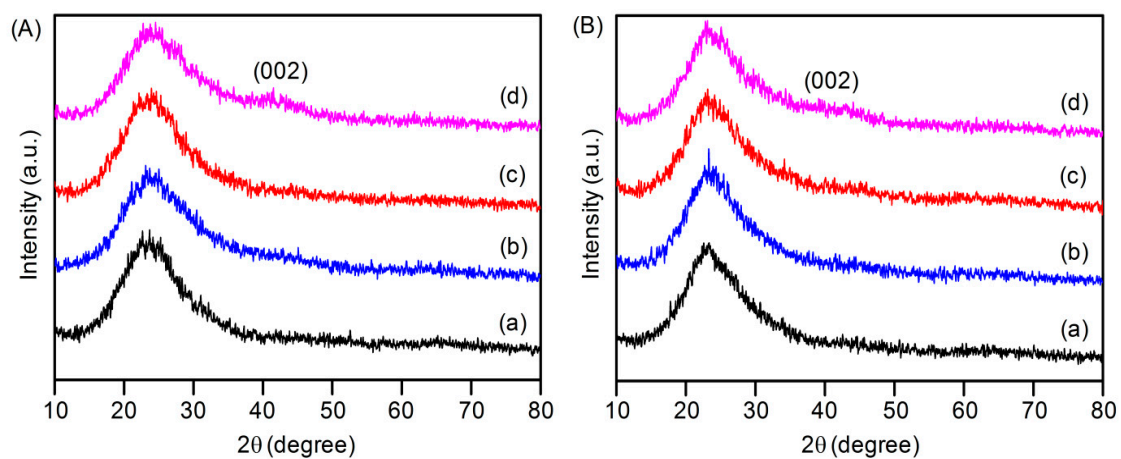


Figure S3. Wide angle XRD patterns (A) Ru(x)@S1B-C0 and (B) Ru(x)@S1B-C10, where x = (a) 0.5, (b) 1.0, (c) 2.0, and (d) 5.0 wt.%.

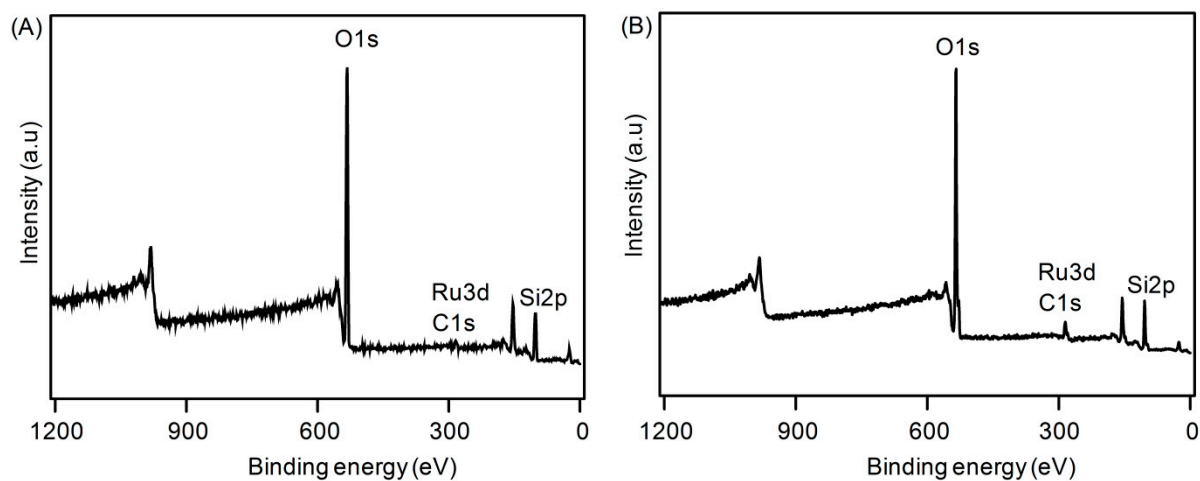


Figure S4. XPS Survey spectra of (A) Ru(1)@S1B-C0, and (B) Ru(1)@S1B-C10.

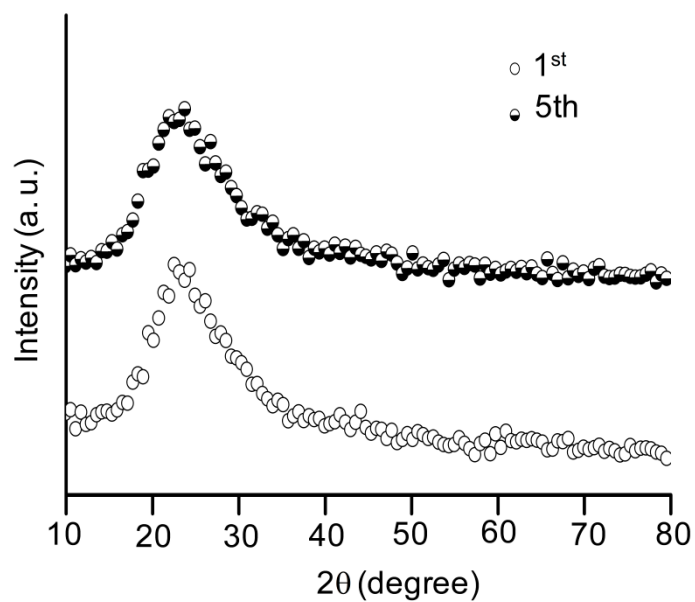


Figure S5. Wide angle XRD patterns of fresh and recycled Ru(1)@S1B-C10.