

## Supporting Information

### Bimetallic Pt-Co catalysts for the liquid-phase WGS

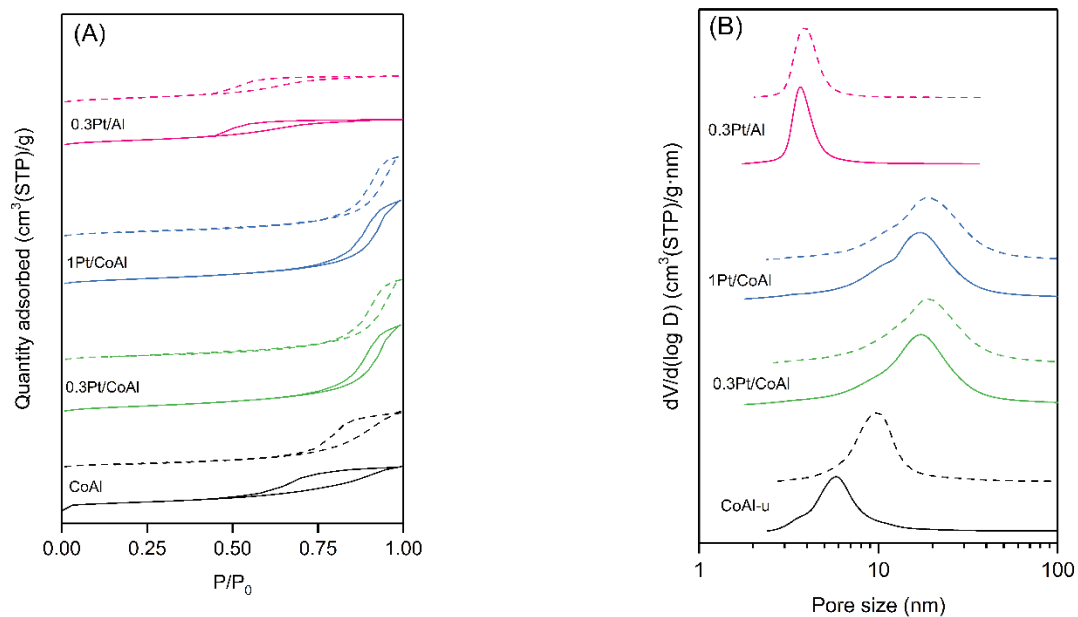
Alberto José Reynoso <sup>1</sup>, Jose Luis Ayastuy <sup>1,\*</sup>, Unai Iriarte-Velasco <sup>2</sup> and Miguel Ángel Gutiérrez-Ortiz <sup>1</sup>

<sup>1</sup> Department of Chemical Engineering, Faculty of Science and Technology, University of the Basque Country UPV/EHU, Sarriena S/N, 48940 Leioa, Spain; [alberto.jose.reynoso@ehu.eus](mailto:alberto.jose.reynoso@ehu.eus) (A.J.R.), [Miguelangel.gutierrez@ehu.eus](mailto:Miguelangel.gutierrez@ehu.eus) (M.A.G.O.)

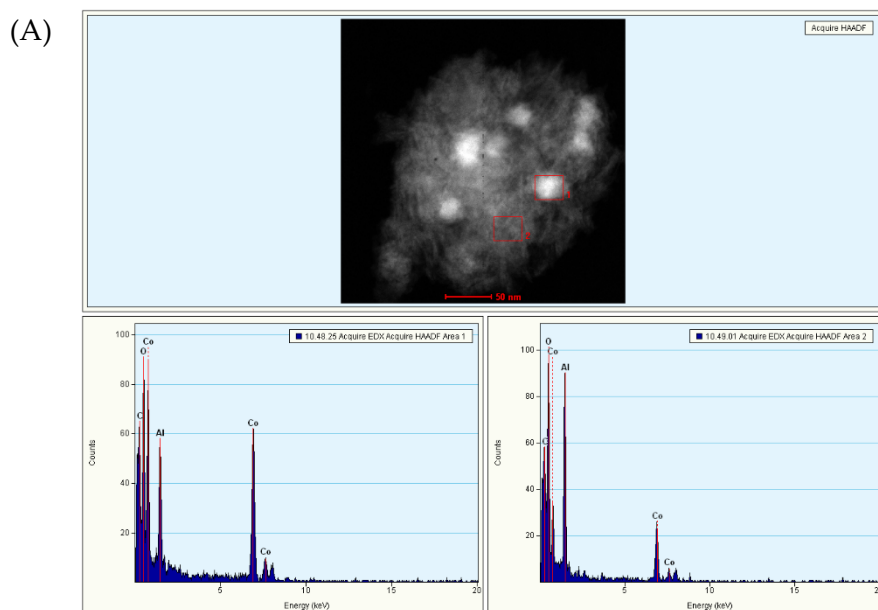
<sup>2</sup> Department of Chemical Engineering, Faculty of Pharmacy, University of the Basque Country UPV/EHU, Paseo de la Universidad, 7, 01006 Vitoria, Spain; [unai.iriarte@ehu.eus](mailto:unai.iriarte@ehu.eus) (U.I.V.)

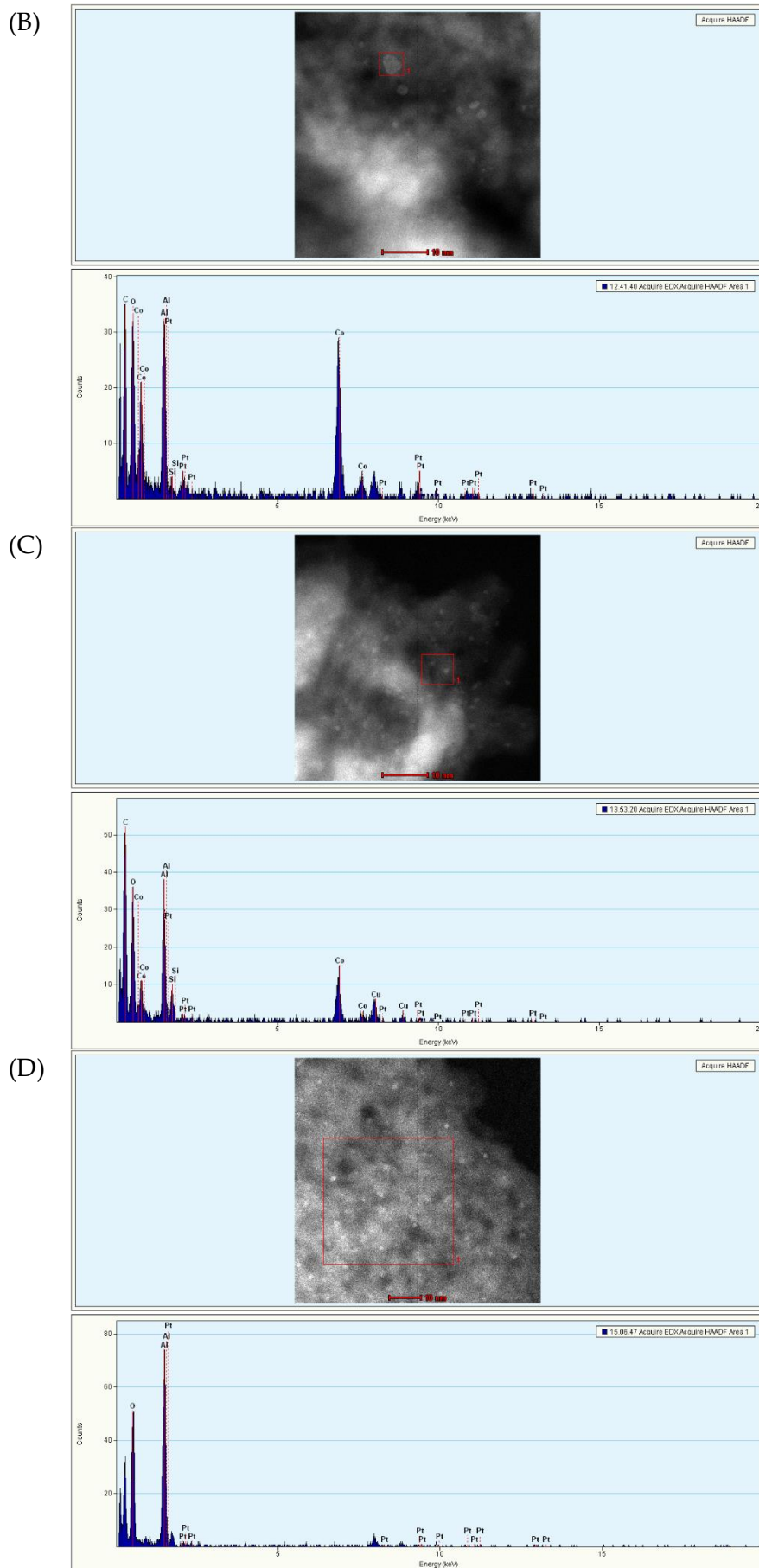
\* Correspondence: [jose.luis.ayastuy@ehu.eus](mailto:jose.luis.ayastuy@ehu.eus); Tel.: +34-94-601-2619 (J.L.A.)

Received: date; Accepted: date; Published: date

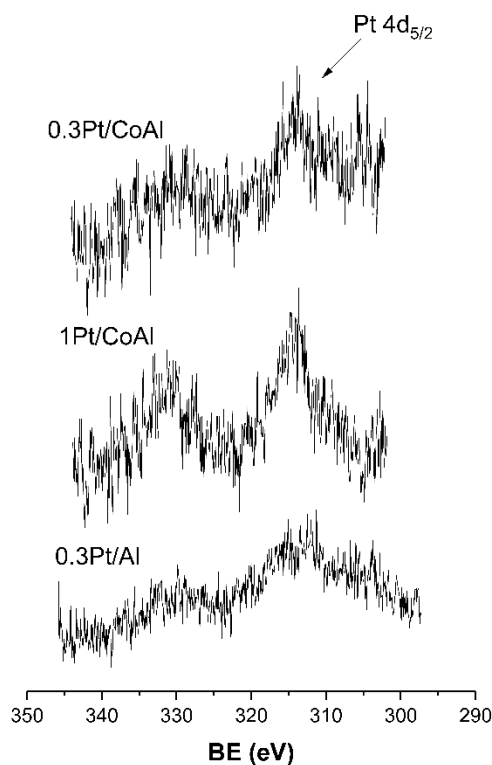


**Figure S1.** Nitrogen isotherms (A) and pore size distribution (B) of the calcined (solid lines) and reduced (dashed lines) samples.

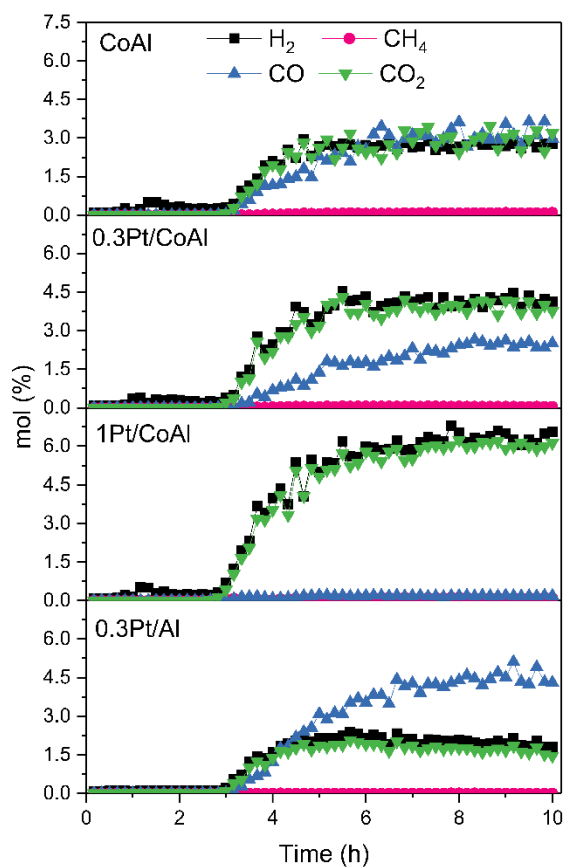




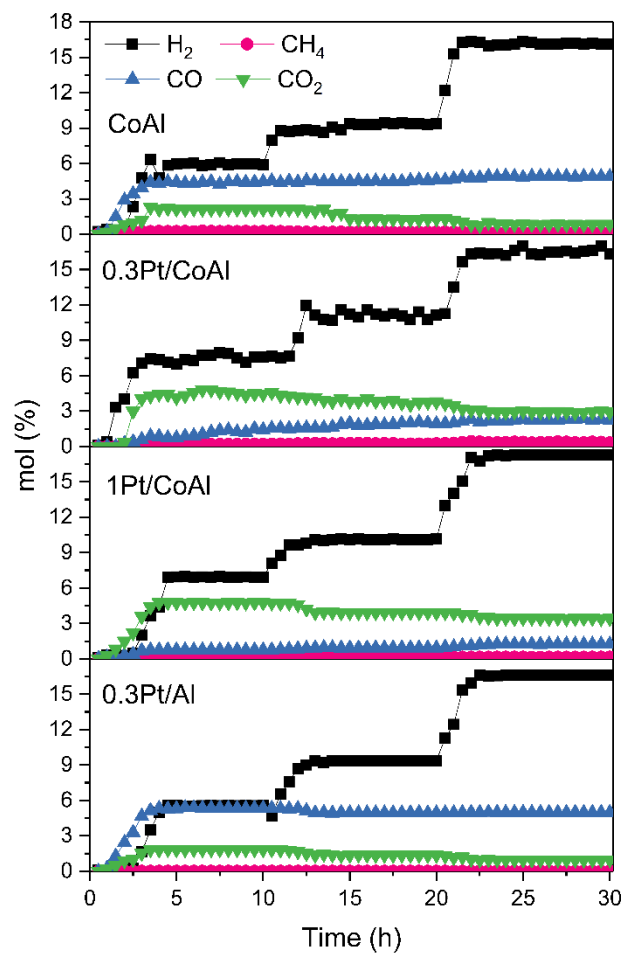
**Figure S2.** EDX spectrum of reduced samples (A) CoAl (B) 0.3Pt/CoAl (C) 1PtCoAl and (D) 0.3Pt/Al.



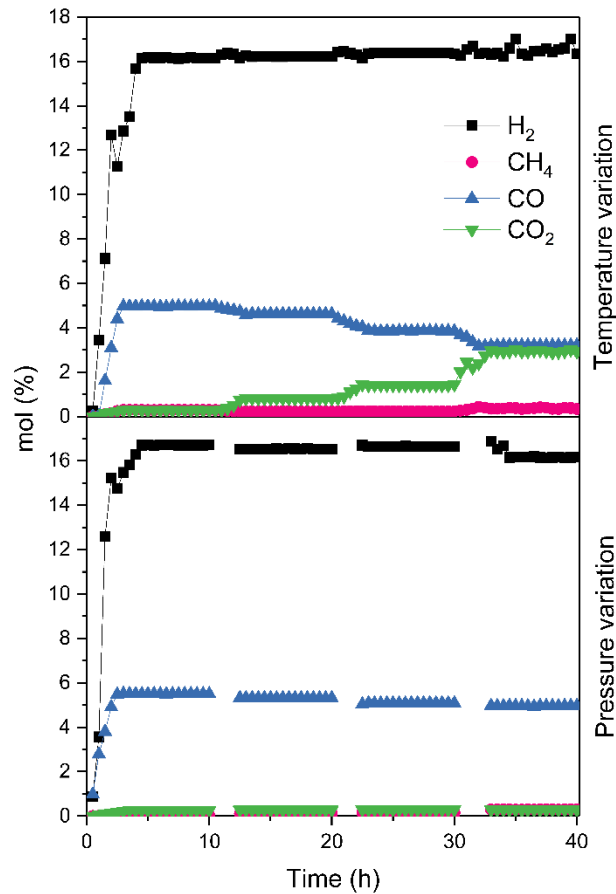
**Figure S3.** XPS spectra corresponding to Pt 4d<sub>5/2</sub>.



**Figure S4.** Outlet molar concentration of products during WGS reaction in the absence of hydrogen ( $H_2/CO = 0$ ). Reaction conditions: 260 °C/50 bar;  $W_{cat}$  (0.2 g), water flow (0.04 mL/min), CO flow (3.5 mL/min, STP).



**Figure S5.** Outlet molar concentration of products during WGS experiments at different H<sub>2</sub>/CO ratio. Reaction conditions: 260 °C/50 bar;  $W_{\text{cat}}$  (0.2 g), water flow (0.04mL/min), CO flow (3.5 mL/min, STP); H<sub>2</sub>/CO=4/3 (0-10 h), H<sub>2</sub>/CO =7/3 (11-20 h) and H<sub>2</sub>/CO=4 (21-30 h).



**Figure S6.** Outlet molar concentration of products during WGS experiments at different temperature and pressure over Pt/CoAl. Reaction conditions:  $W_{\text{cat}}$  (0.2 g), water flow (0.04 mL/min), CO flow (3.5 mL/min, STP),  $H_2$  flow (14 mL/min, STP). Upper part: temperature variation (220, 235, 245, 260 °C) and 50 bar. Lower part: pressure variation (25, 35, 40, 50 bar) and 220 °C.

**Table 1S.** List of apparent activation energies reported in this work and in the literature for Pt catalysts.

Catalysts	E <sub>a</sub> (kJ/mol)	Operating conditions	Reference
0.3%Pt/CoAl	51.5	220-260 °C, liquid-phase	This work
Co <sub>3</sub> O <sub>4</sub>	91.0	180-280 °C, gas-phase	
0.2%Pt/Co <sub>3</sub> O <sub>4</sub>	50.1	150-200 °C, gas-phase	[1]
0.2%Pt/Co <sub>3</sub> O <sub>4</sub>	24.8	300-350 °C, gas-phase	
1%Pt/Al <sub>2</sub> O <sub>3</sub>	68	285 °C, gas-phase	[2]
0.9% Pt/CeO <sub>2</sub> /Al <sub>2</sub> O <sub>3</sub>	70		
1.5% Pt/ZrO <sub>2</sub>	58		
2% Pt/CeO <sub>2</sub>	65	250-350 °C, gas-phase	[3]
1.9% Pt/TiO <sub>2</sub>	23		
1.5% Pt/Fe <sub>2</sub> O <sub>3</sub>	44		

**Table 2S.** Liquid holdup ( $\epsilon_L$ ), vapor composition and liquid/vapor distribution of CO and H<sub>2</sub>.

exp #	H <sub>2</sub> /CO	T (°C)	P (bar)	$\epsilon_L$ (%)	P <sub>H<sub>2</sub>O</sub> (bar)	P <sub>CO</sub> (bar)	P <sub>H<sub>2</sub></sub> (bar)	Liquid/vapor distribution (mol/mol)	
								CO	H <sub>2</sub>
1	0	260	50	16.4	47.36	2.64	0	1.05·10 <sup>-04</sup>	0
2	4/3	260	50	16.2	47.36	1.13	1.51	4.49·10 <sup>-05</sup>	1.13·10 <sup>-04</sup>
3	7/3	260	50	16.1	47.36	0.79	1.85	3.14·10 <sup>-05</sup>	7.88·10 <sup>-05</sup>
4	12/3	260	50	15.8	47.36	0.53	2.11	2.11·10 <sup>-05</sup>	5.29·10 <sup>-05</sup>
5	12/3	245	50	18.8	36.78	2.64	10.58	1.13·10 <sup>-04</sup>	2.71·10 <sup>-04</sup>
6	12/3	235	50	15.8	30.78	3.84	15.38	1.72·10 <sup>-04</sup>	4.03·10 <sup>-04</sup>
7	12/3	220	50	15.8	23.2	5.36	21.44	2.60·10 <sup>-04</sup>	5.80·10 <sup>-04</sup>
8	12/3	220	40	15.3	23.2	3.36	13.44	1.63·10 <sup>-04</sup>	3.64·10 <sup>-04</sup>
9	12/3	220	35	15.1	23.2	2.36	9.44	1.14·10 <sup>-04</sup>	2.55·10 <sup>-04</sup>
10	12/3	220	25	14.4	23.2	0.36	1.44	1.74·10 <sup>-05</sup>	3.89·10 <sup>-05</sup>

Liquid holdup ( $\epsilon_L$ ) was estimated according to reference [4].

## References

- Zhang, S.; Shan, J.; Zhu, Y.; Frenkel, A.I.; Patlolla, A.; Huang, W.; Yoon, S.J.; Wang, L.; Yoshida, H.; Takeda, S.; Tao, F. WGS Catalysis and In Situ Studies of CoO<sub>1-x</sub>, PtCo<sub>n</sub>/Co<sub>3</sub>O<sub>4</sub>, and Pt<sub>m</sub>Co<sub>m</sub>'/CoO<sub>1-x</sub> Nanorod Catalysts. *J. Am. Chem. Soc.* **2013**, *135*, 8283-8293, DOI 10.1021/ja401967y. Available online: <https://doi.org/10.1021/ja401967y>.
- Mendes, D.; Mendes, A.; Madeira, L.M.; Iulianelli, A.; Sousa, J.M.; Basile, A. The water-gas shift reaction: from conventional catalytic systems to Pd-based membrane reactors—a review. *Asia-Pac. J. Chem. Eng.* **2010**, *5*, 111-137, DOI 10.1002/apj.364. Available online: <https://onlinelibrary.wiley.com/doi/abs/10.1002/apj.364>.
- Thinon, O.; Diehl, F.; Avenier, P.; Schuurman, Y. Screening of bifunctional water-gas shift catalysts. *Catal. Today* **2008**, *137*, 29-35, DOI <https://doi.org/10.1016/j.cattod.2008.01.001>.
- García-Serna, J.; Gallina, G.; Biasi, P.; Salmi, T. Liquid Holdup by Gravimetric Recirculation Continuous easurement Method. Application to Trickle Bed Reactors under Pressure at Laboratory Scale. *Ind. Eng. Chem. Res.* **2017**, *56*, 13294-13300, DOI 10.1021/acs.iecr.7b01810. Available online: <https://pubs.acs.org/doi/abs/10.1021/acs.iecr.7b01810>.