

Supplementary Information to
„A combined bio-chemical synthesis route for 1-octene sheds light on
rhamnolipid structure“
by Tiso, Sauer *et al.*

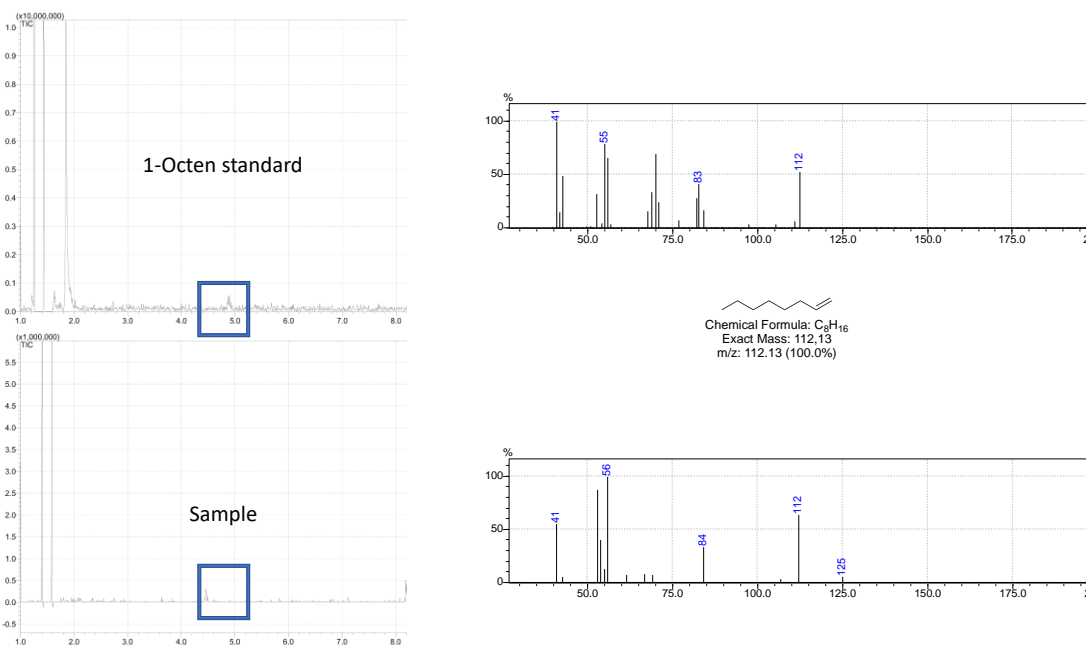


Figure S1: GC-MS analysis of the ethenolysis reaction. Above is an authentic sample of 1-octene as reference. Below is the GC-MS analysis of the reaction mixture. The sample was measured splitless.