

SEM was also used to obtain EDS analyses of samples A, F, G, and the uncalcined sample A. All spectra show signals for titanium and oxygen. No signals for sodium were observed. The signals for carbon and aluminium present in some spectra can be attributed to the aluminium sample holder and the carbon tape used to adhere the sample to the holder.

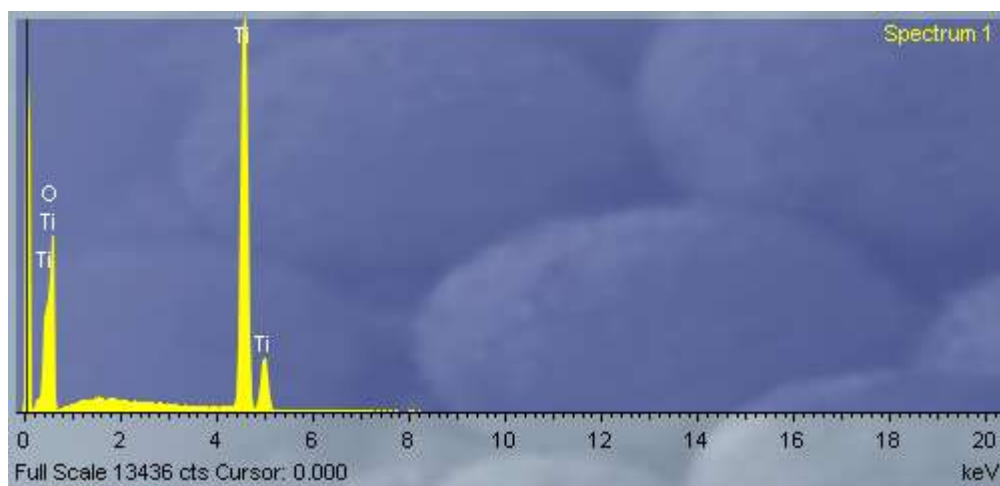


Figure S1: EDS spectra of sample A (20 % NaOH).

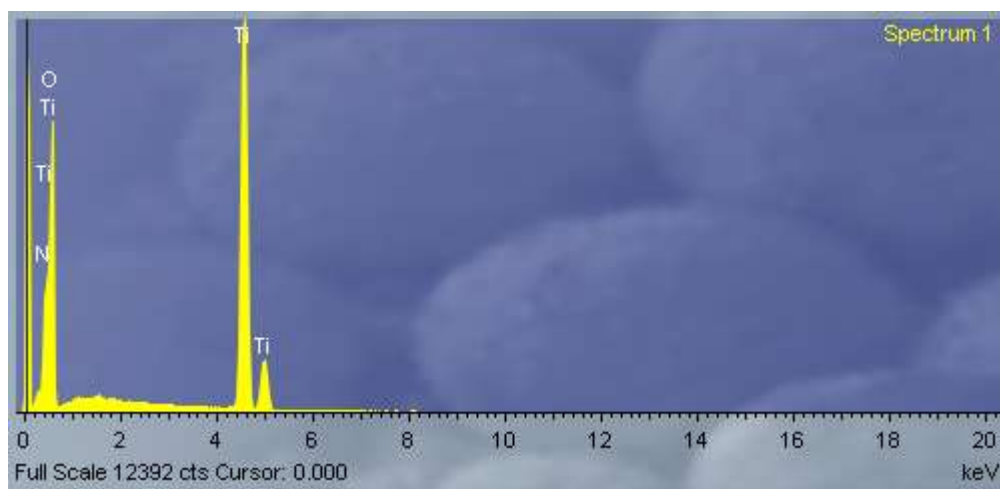


Figure S2: EDS spectra of sample F (10 % NaOH).

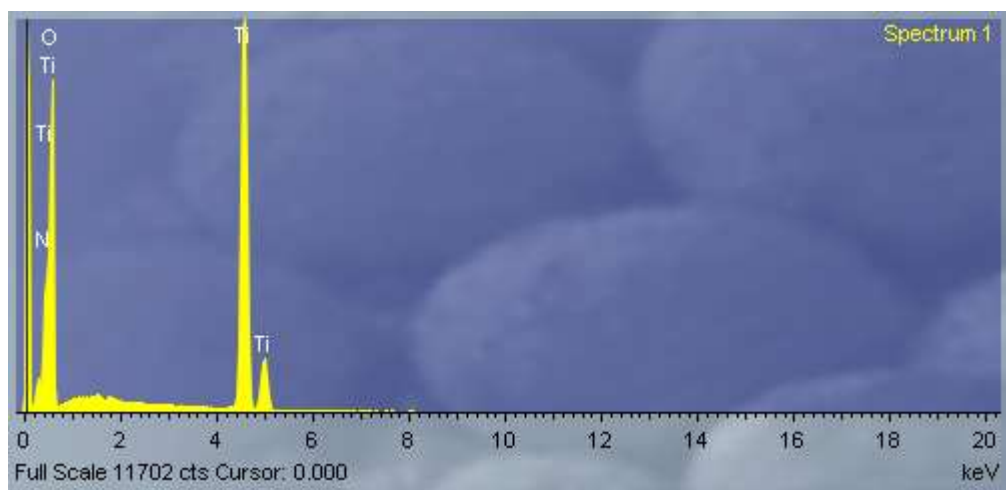


Figure S3: EDS spectra of sample G (30 % NaOH).

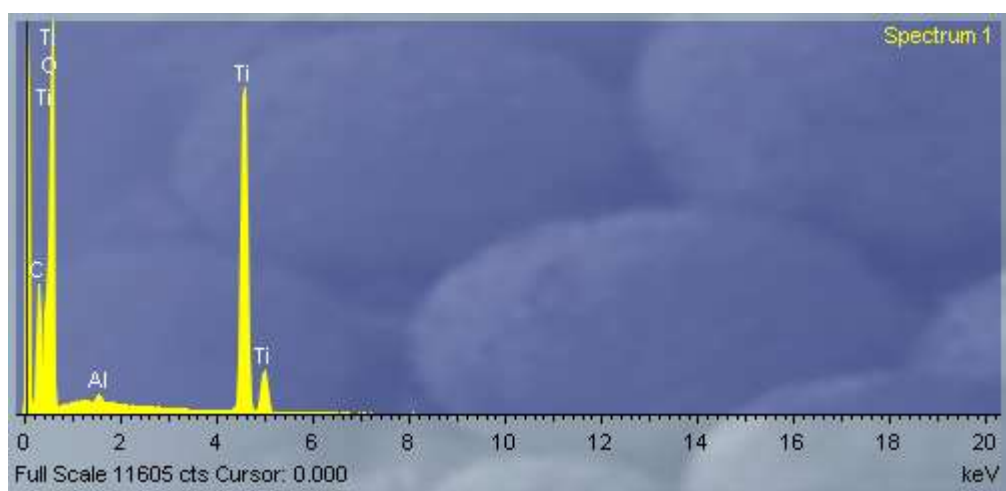


Figure S4: EDS spectra of uncalcined sample A.