

Supporting Information

Similarities and Differences between Site-Selective Acylation and Phosphorylation of Amphiphilic Diols Promoted by Nucleophilic Organocatalysts Decorated with Outer-Sphere Appendages

Or Fleischer, Tom Targel, Fatma Saady, and Moshe Portnoy*

School of Chemistry, Raymond and Beverly Sackler Faculty of Exact Sciences, Tel Aviv

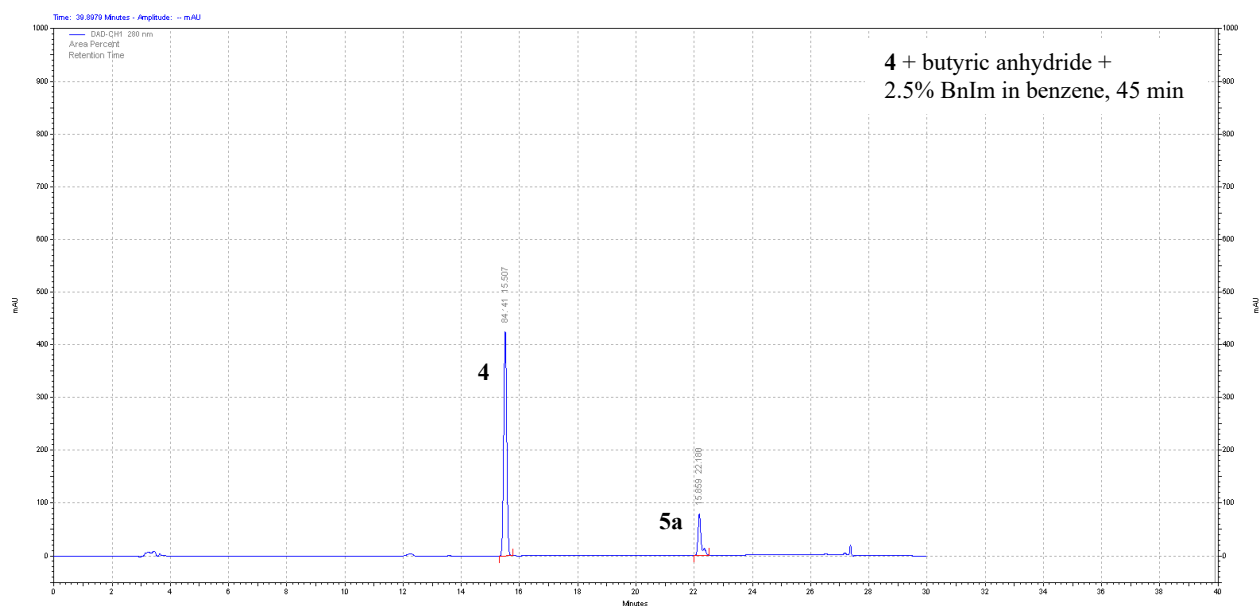
University, Tel Aviv 69967801, Israel

portnoy@tauex.tau.ac.il

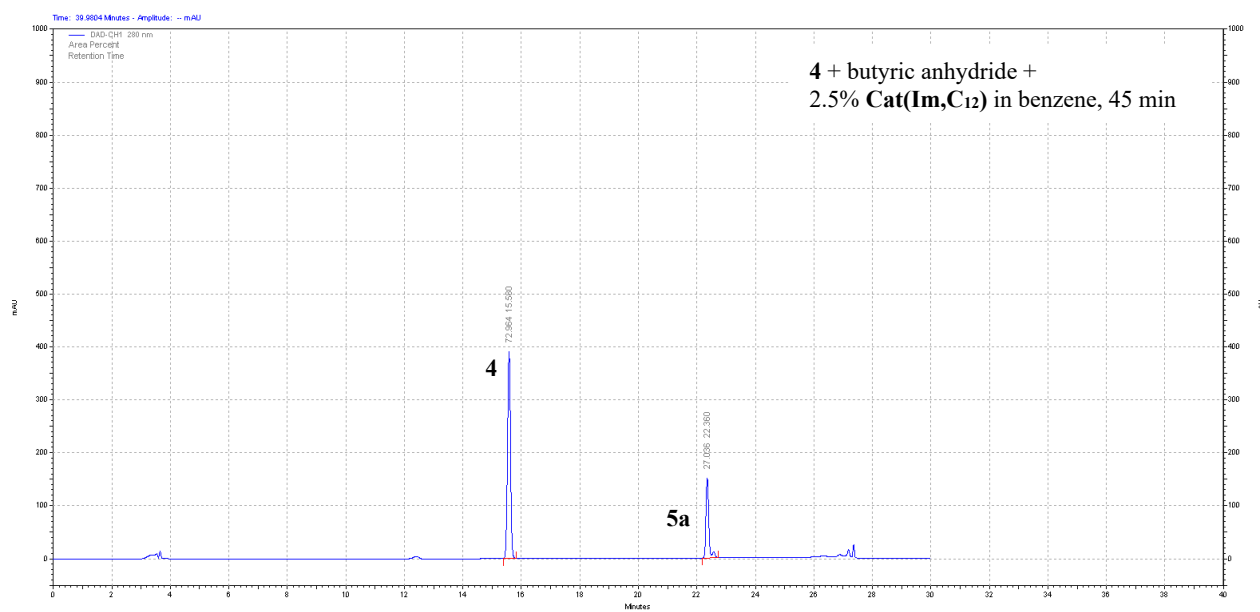
List of Contents

1. Representative HPLC Traces for Table 1	S2
2. Representative HPLC Traces for Table 2	S8
3. Representative HPLC Traces for Table 3	S15
4. Representative HPLC Traces for Table 4	S21
5. Representative HPLC Traces for Table 5	S28

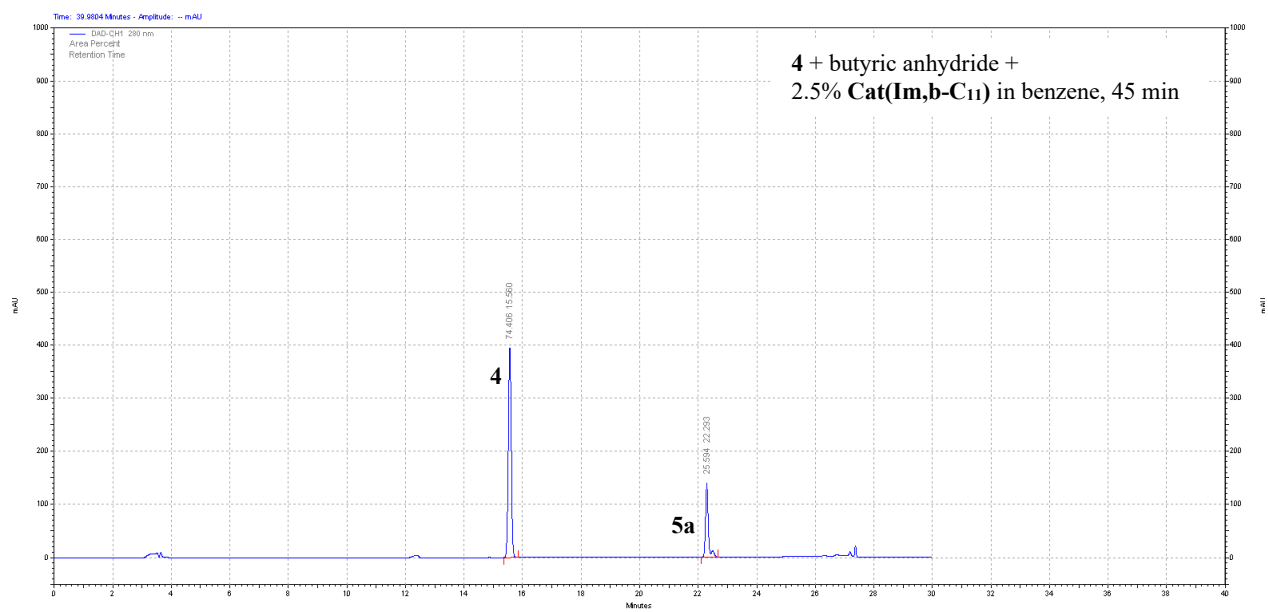
1. Representative HPLC Traces for Table 1



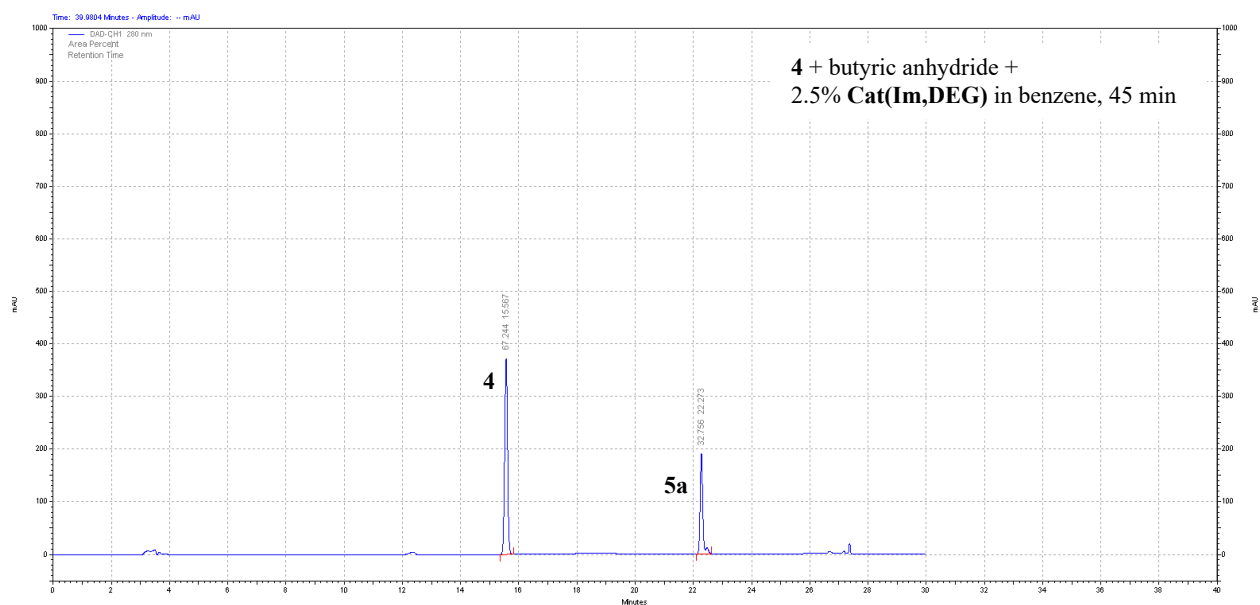
Integration (%): **4** 84.14; **5a** 15.86.



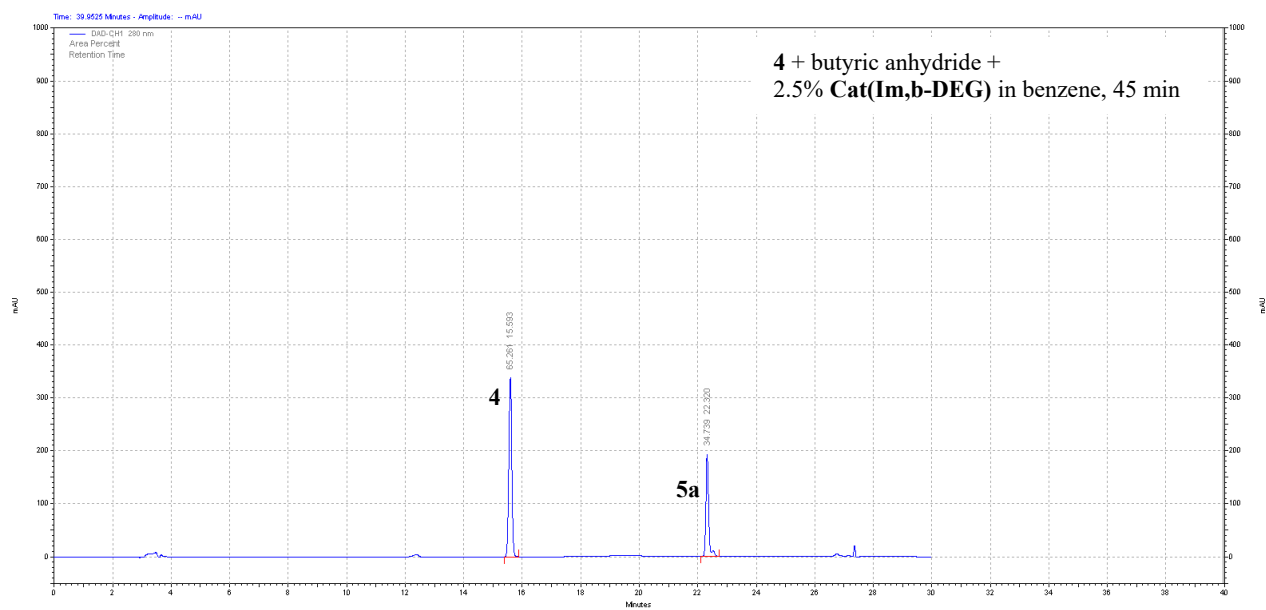
Integration (%): **4** 72.96; **5a** 27.04.



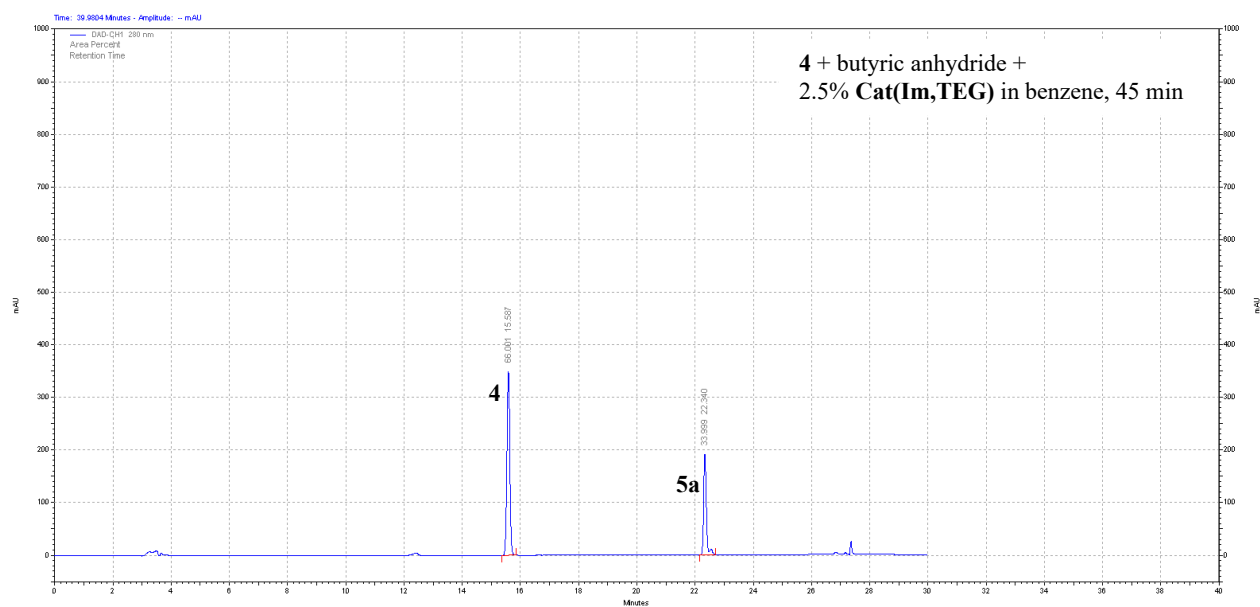
Integration (%): **4** 74.41; **5a** 25.59.



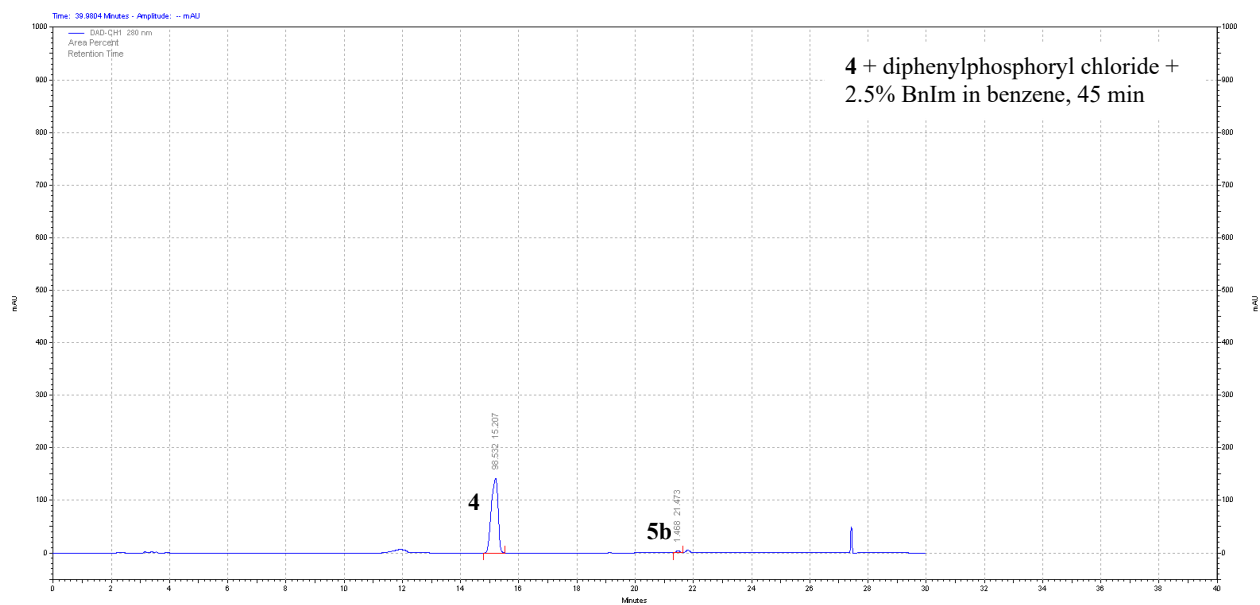
Integration (%): **4** 67.24; **5a** 32.76.



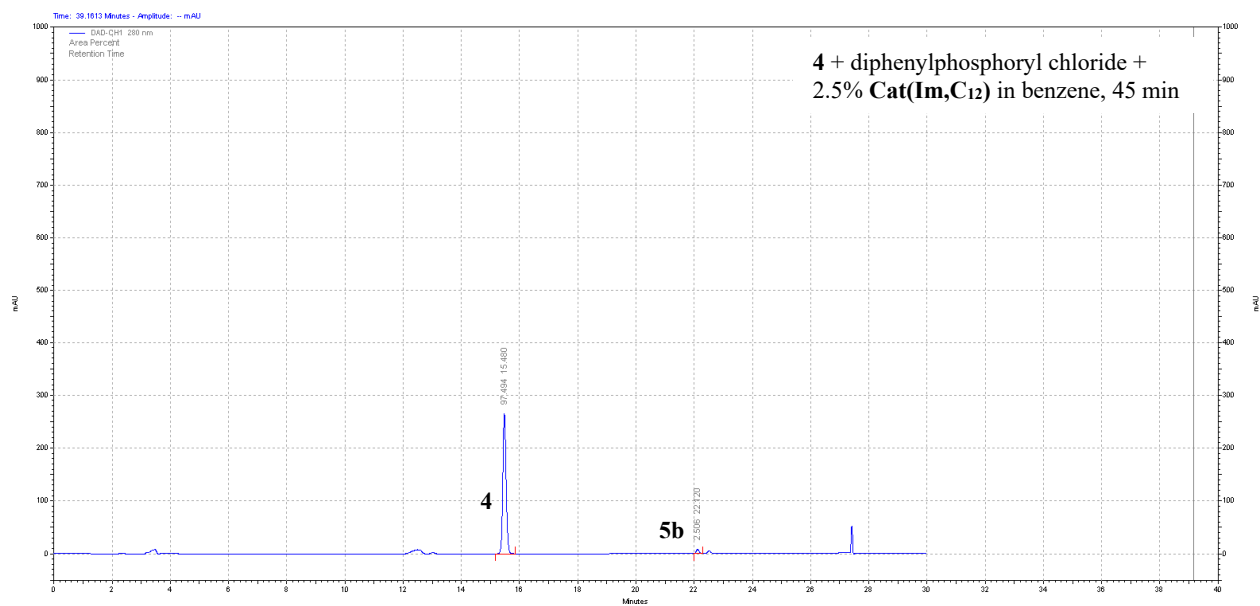
Integration (%): **4** 65.26; **5a** 34.74.



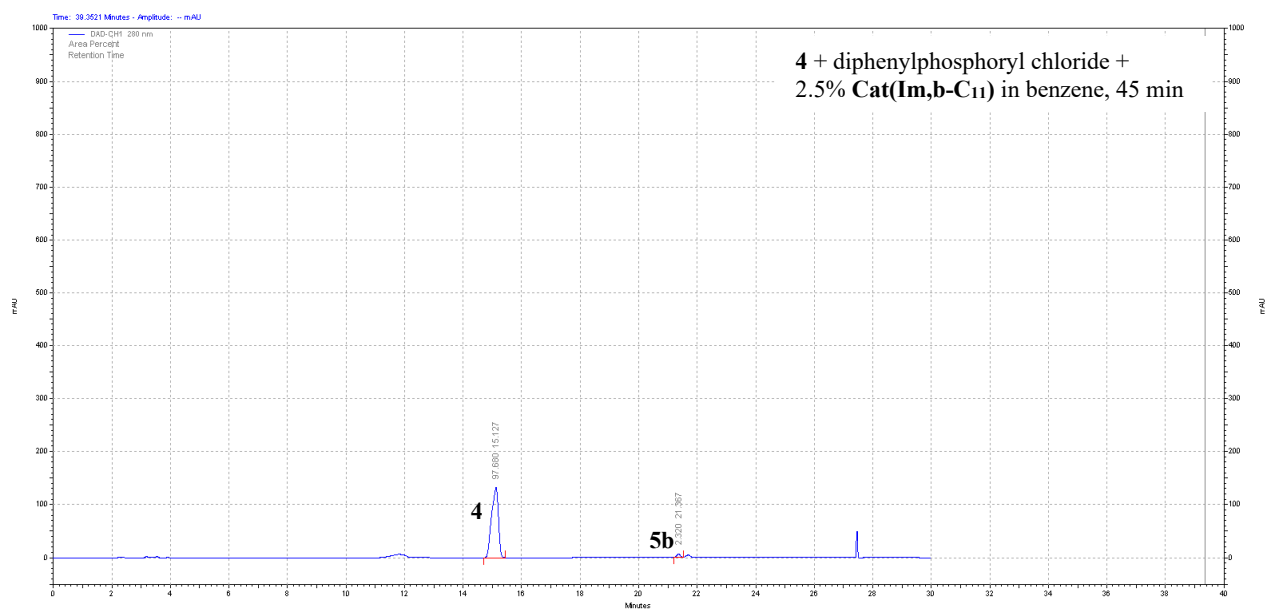
Integration (%): **4** 66.00; **5a** 34.00.



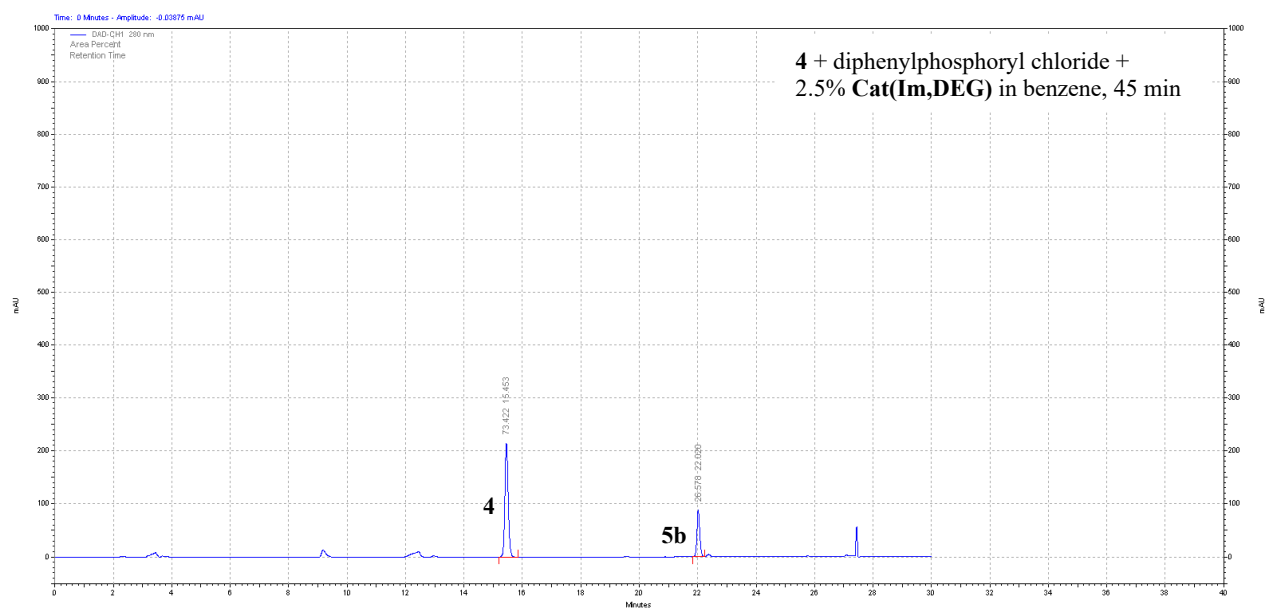
Integration (%): **4** 98.53; **5b** 1.47.



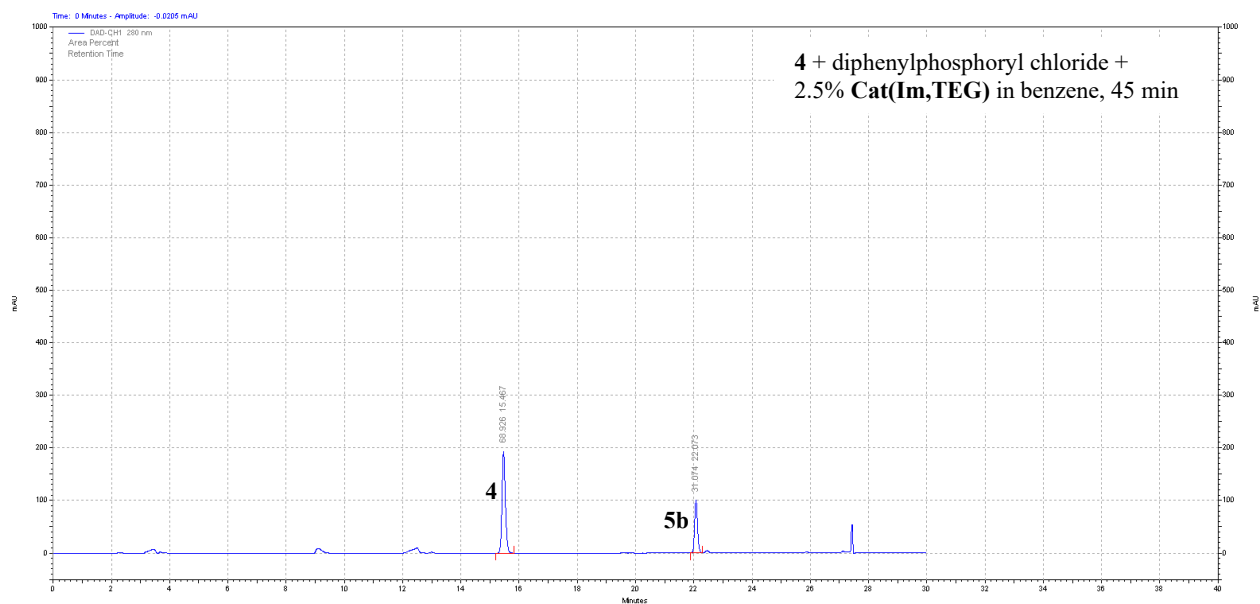
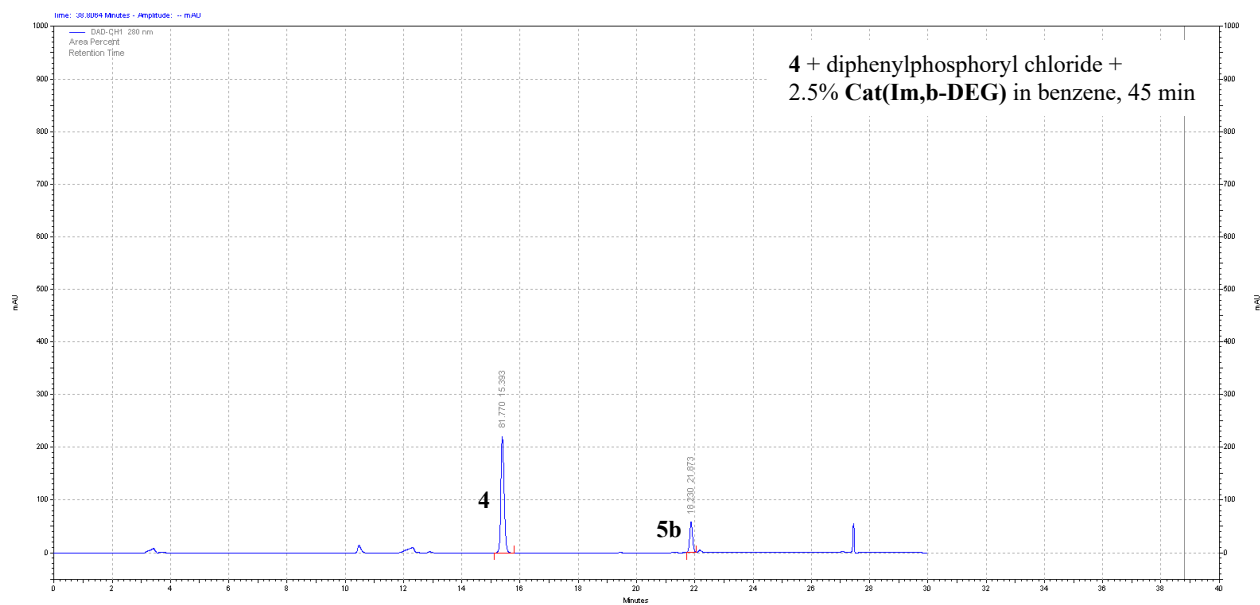
Integration (%): **4** 97.49; **5b** 2.51.



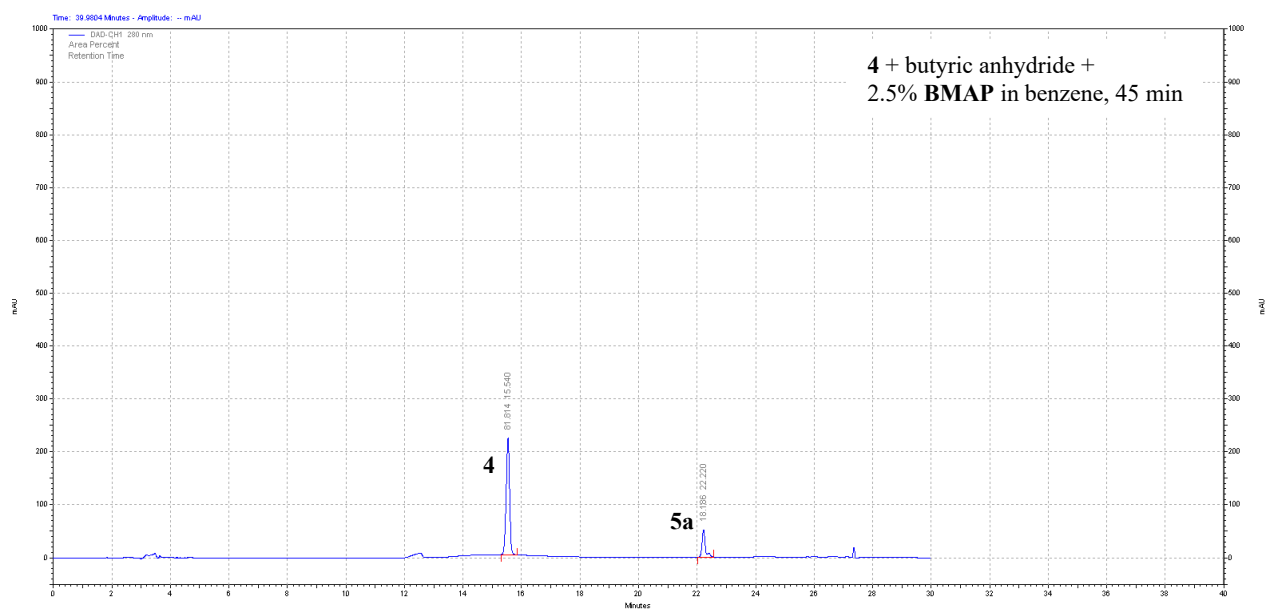
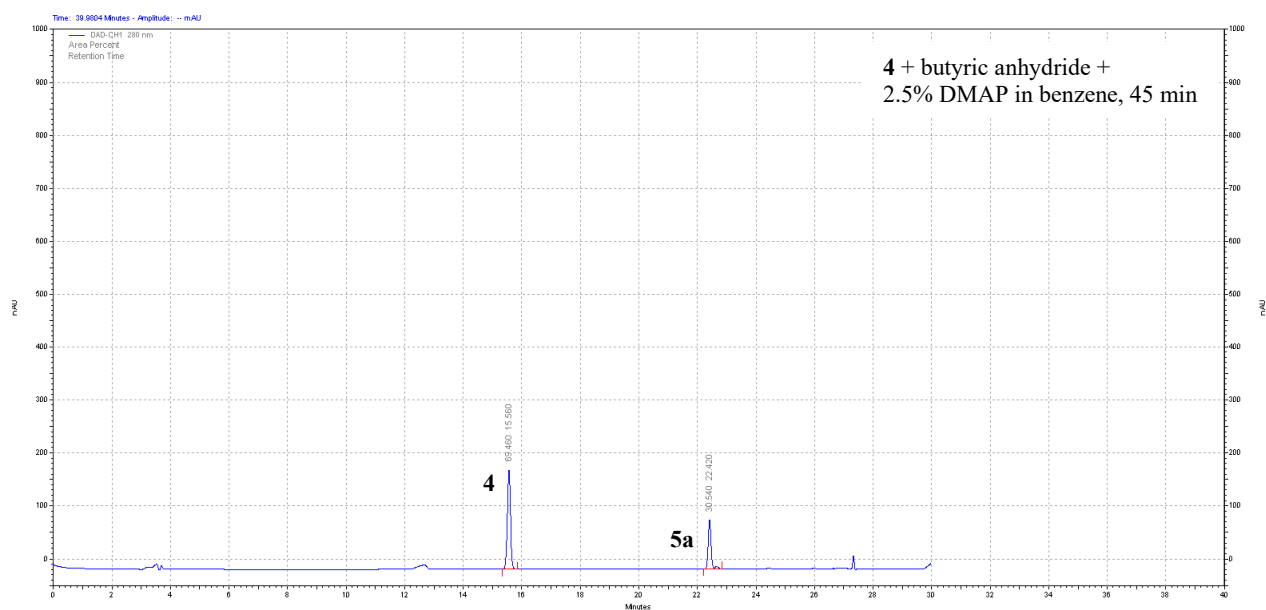
Integration (%): **4** 97.68; **5b** 2.32.

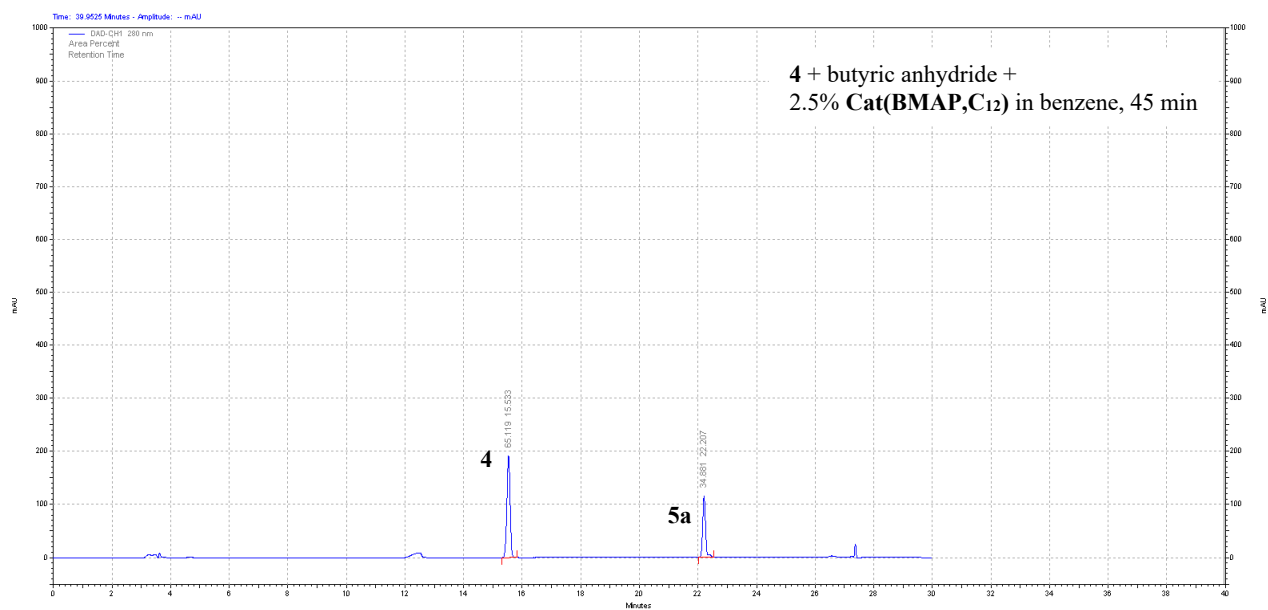


Integration (%): **4** 73.42; **5b** 26.58.

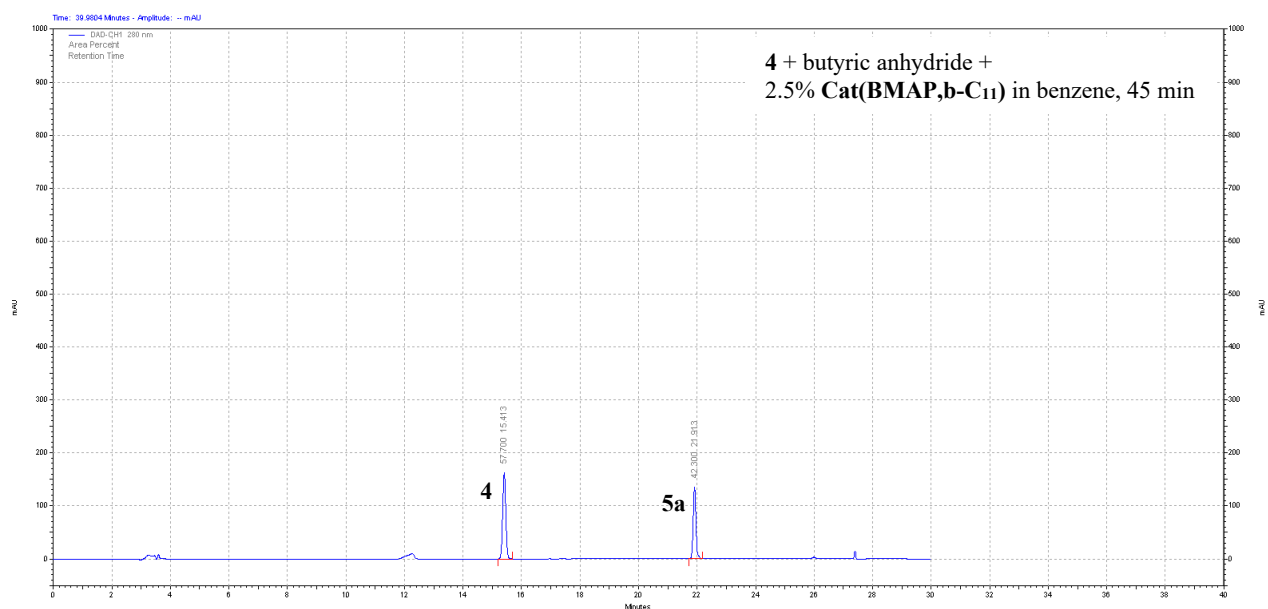


2. Representative HPLC Traces for Table 2

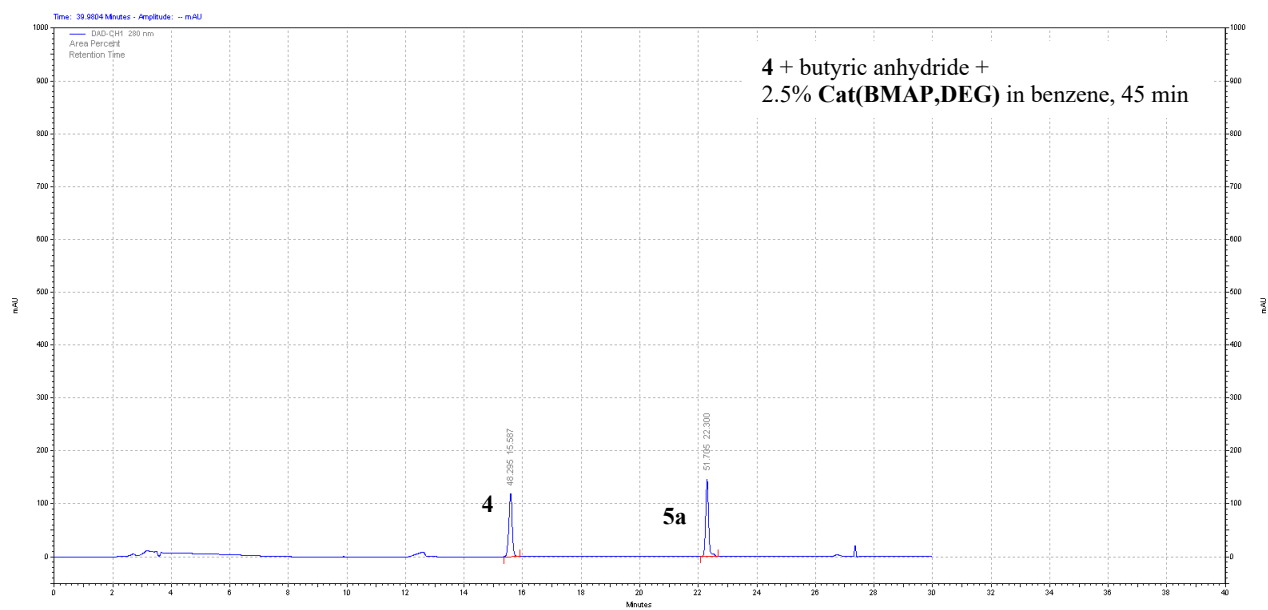




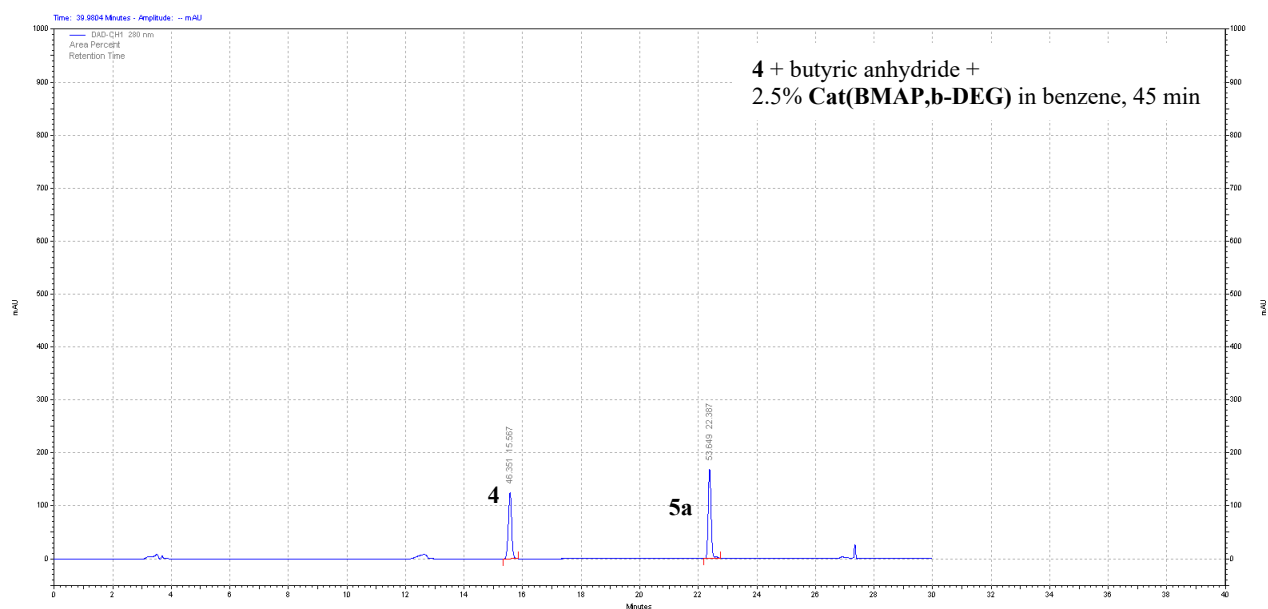
Integration (%): **4** 65.12; **5a** 34.88.



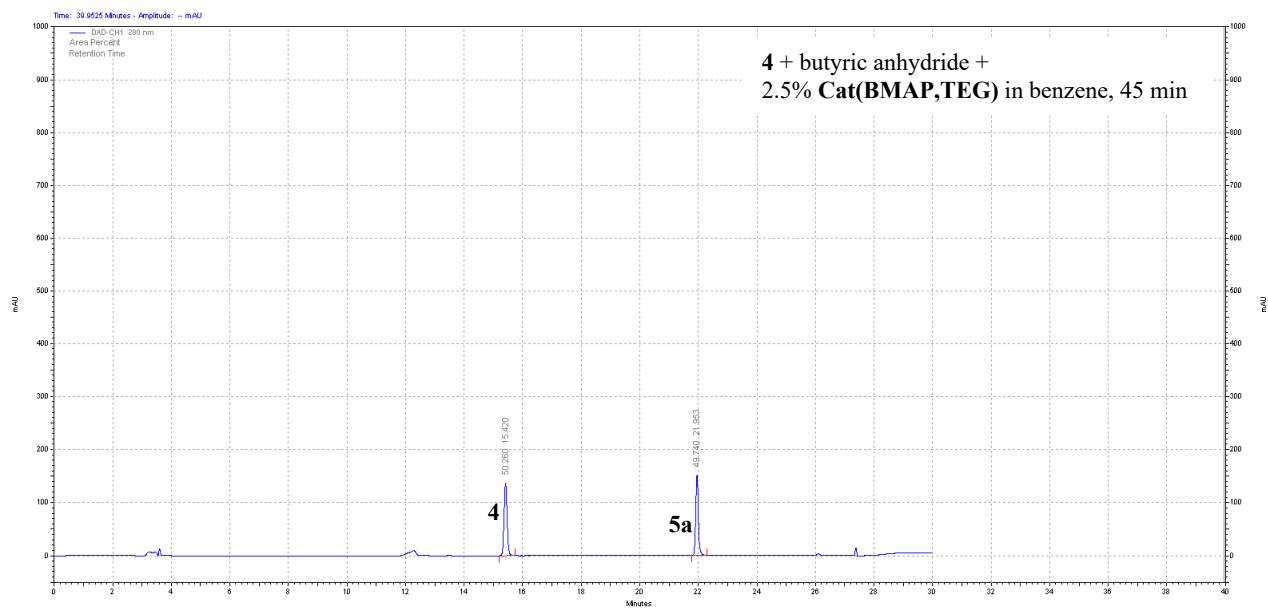
Integration (%): **4** 57.70; **5a** 42.30.



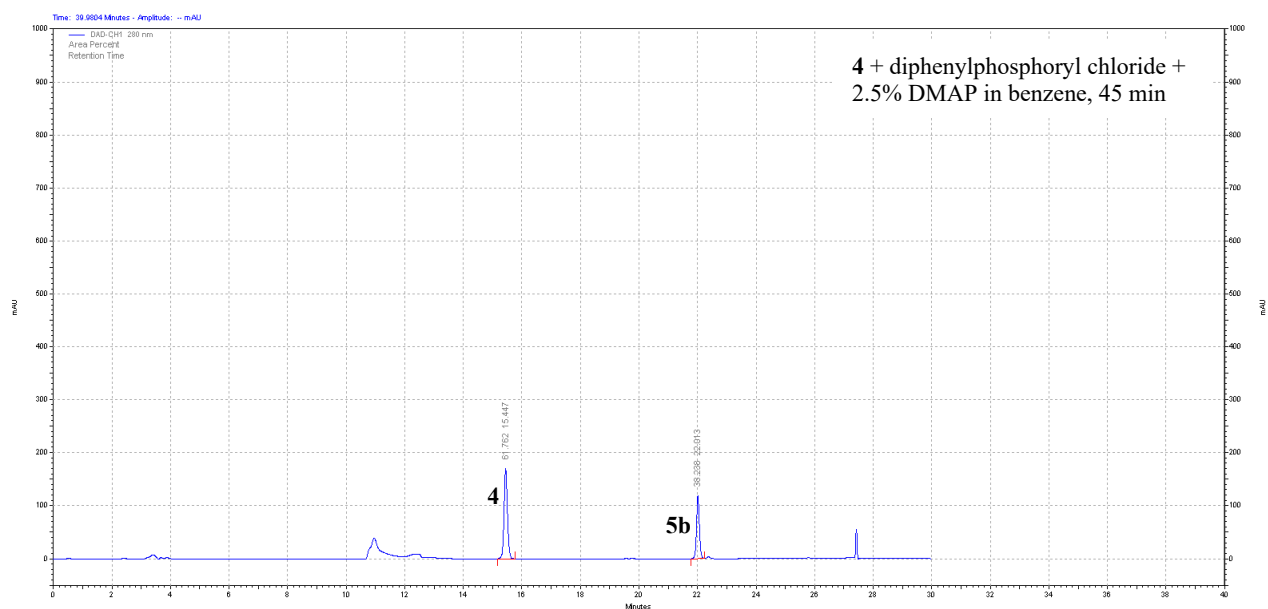
Integration (%): **4** 48.30; **5a** 51.70.



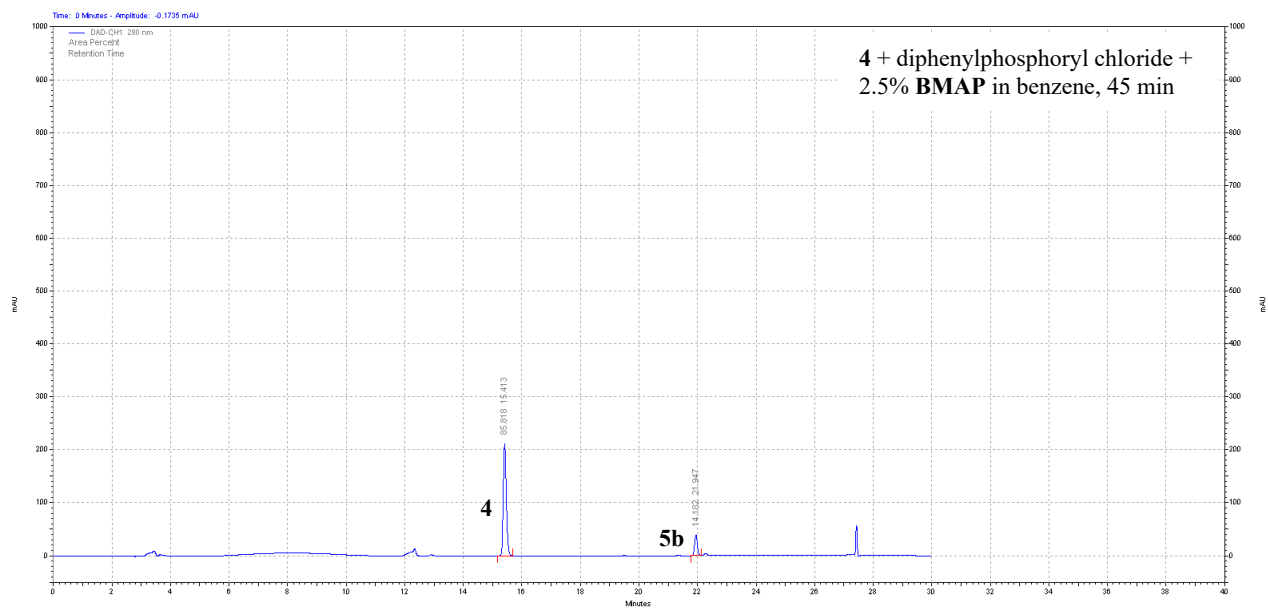
Integration (%): **4** 46.35; **5a** 53.65.



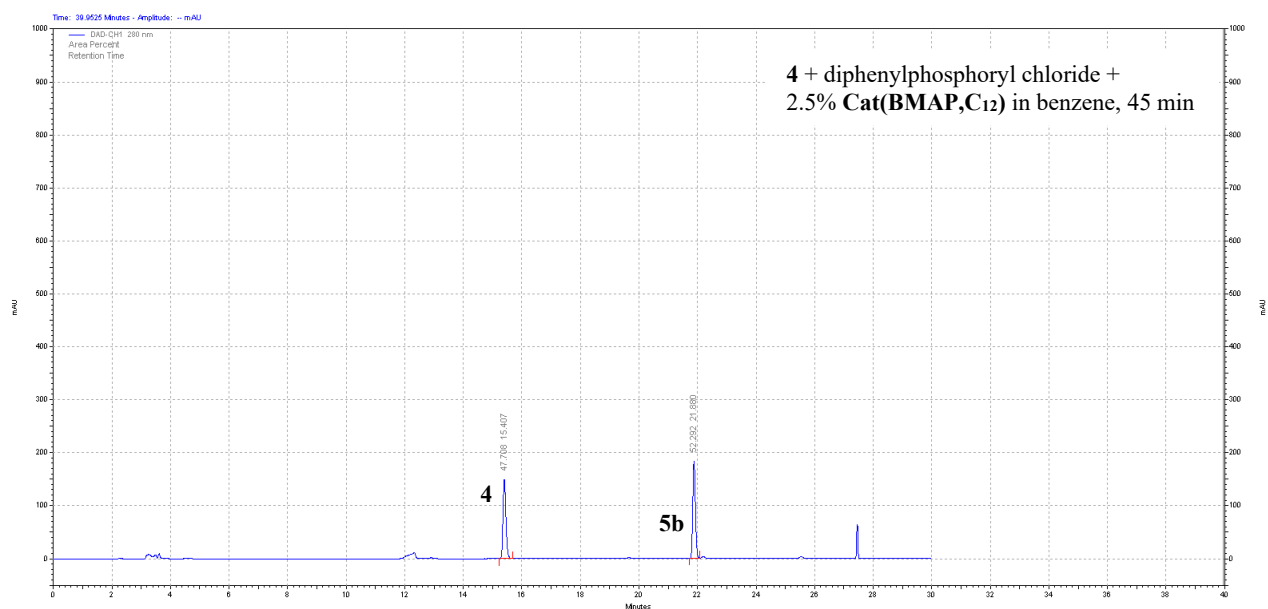
Integration (%): **4** 50.26; **5a** 49.74.



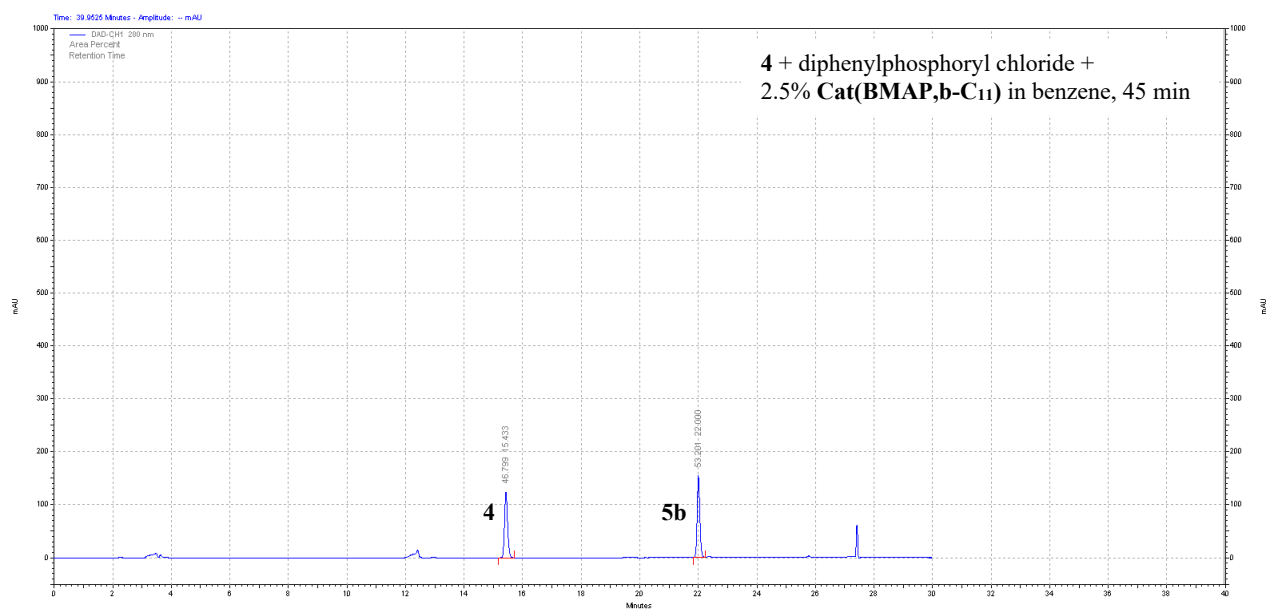
Integration (%): **4** 61.76; **5b** 38.24.



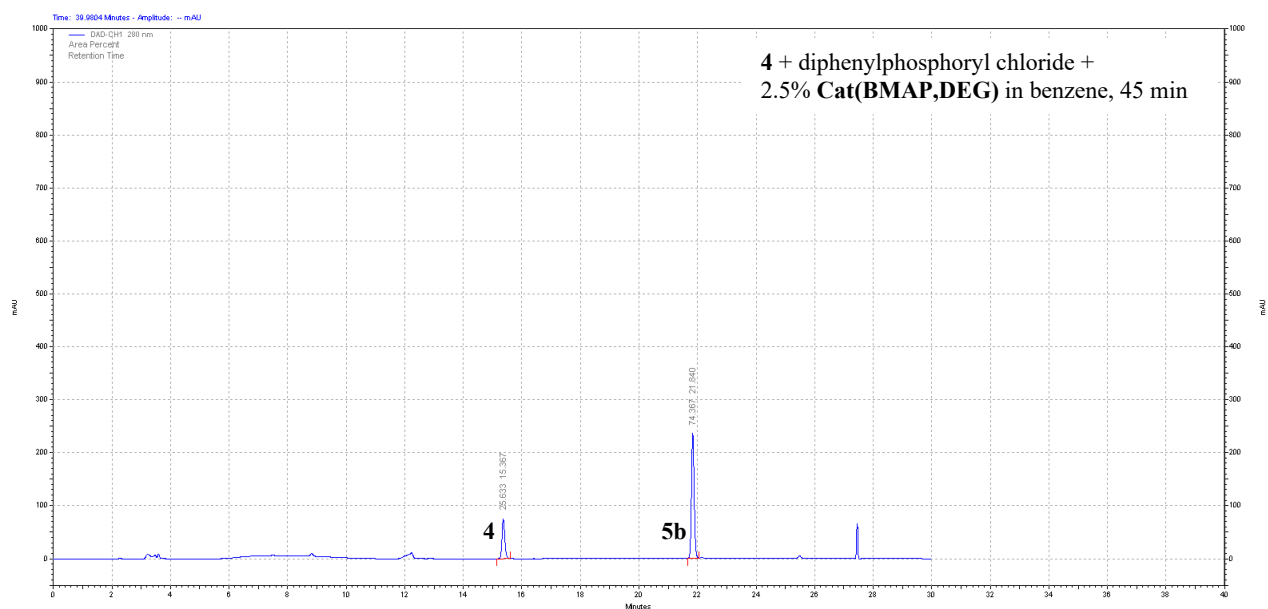
Integration (%): **4** 85.82; **5b** 14.18.



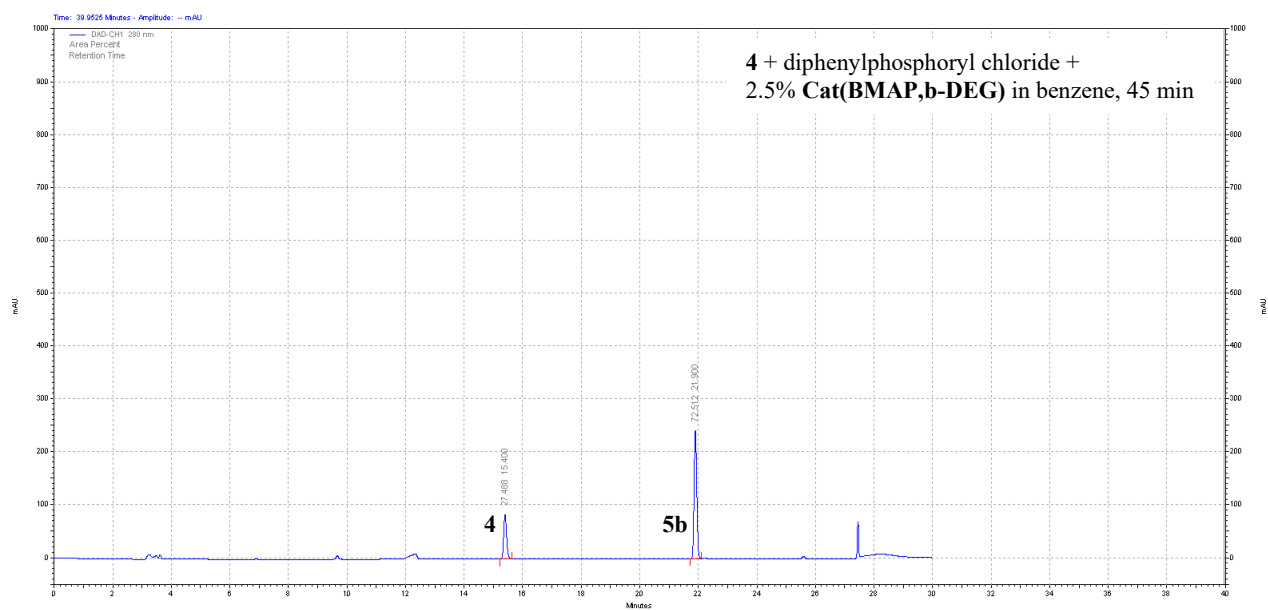
Integration (%): **4** 47.71; **5b** 52.29.



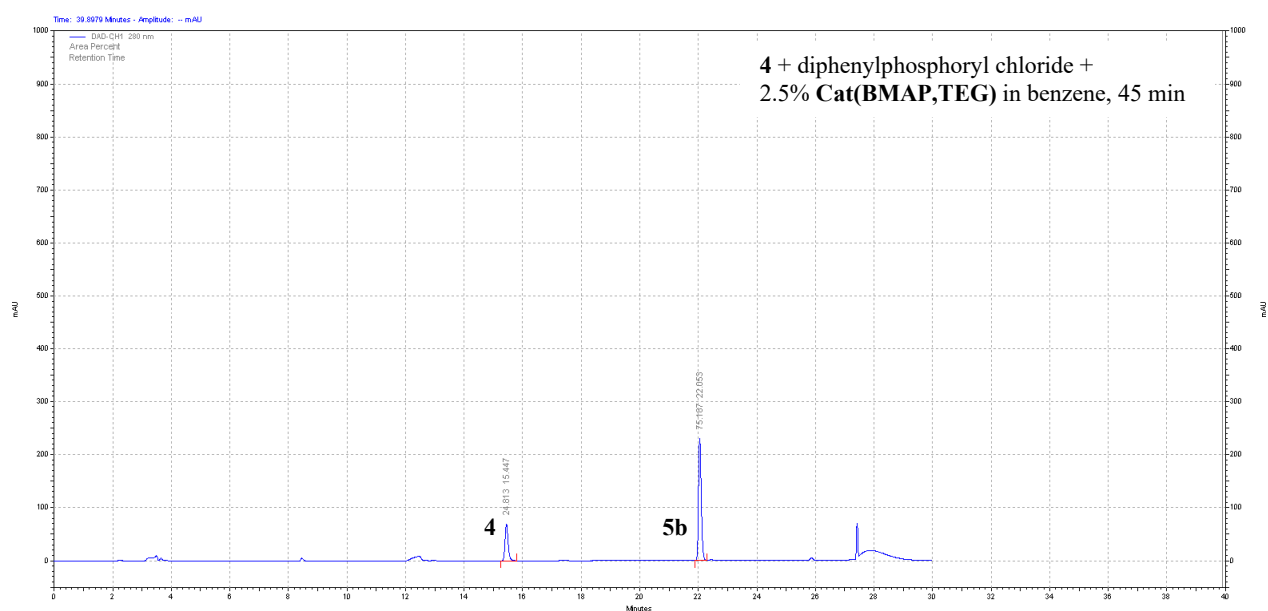
Integration (%): **4** 46.80; **5b** 53.20.



Integration (%): **4** 25.63; **5b** 74.37.



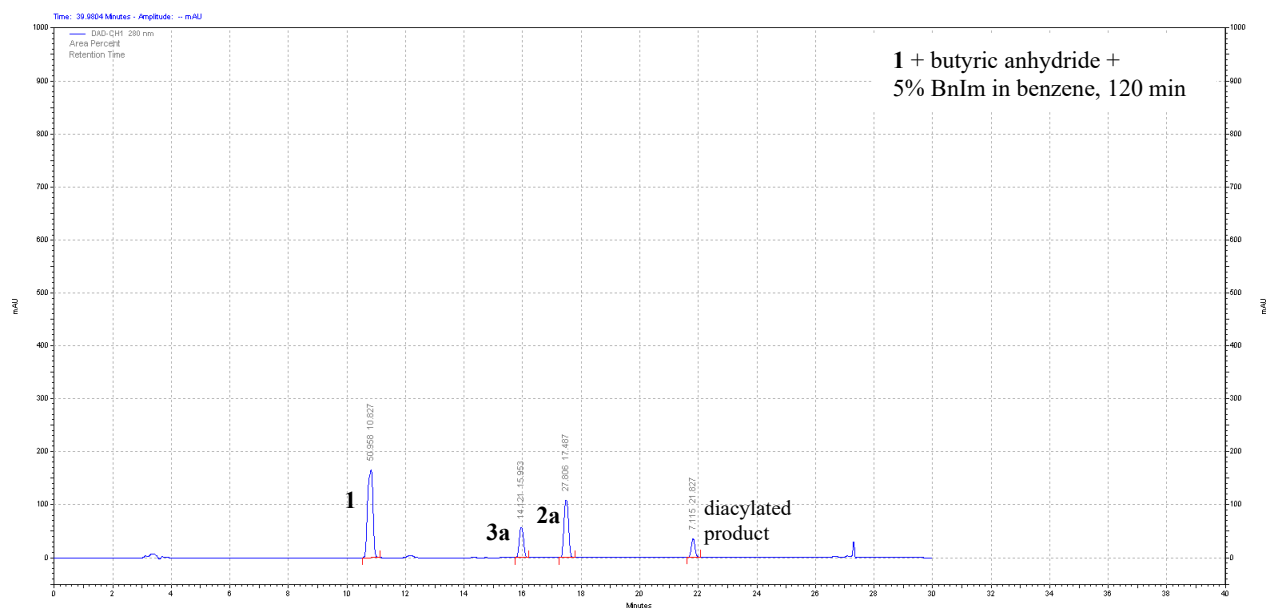
Integration (%): **4** 27.49; **5b** 72.51.



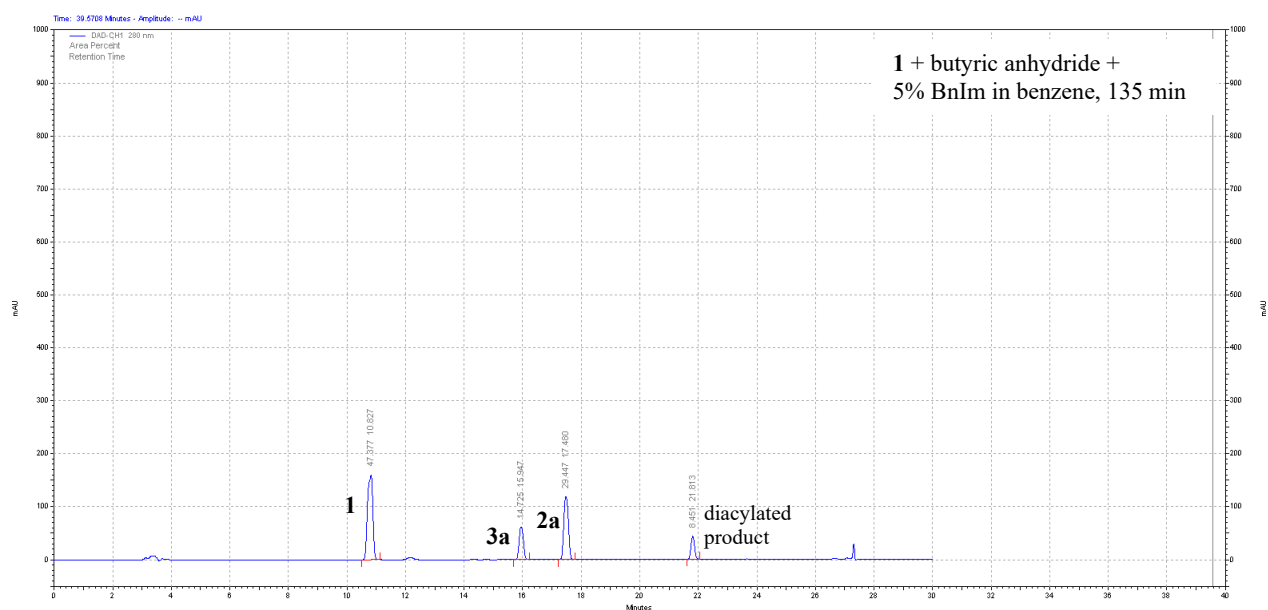
Integration (%): **4** 24.81; **5b** 75.19.

3. Representative HPLC Traces for Table 3

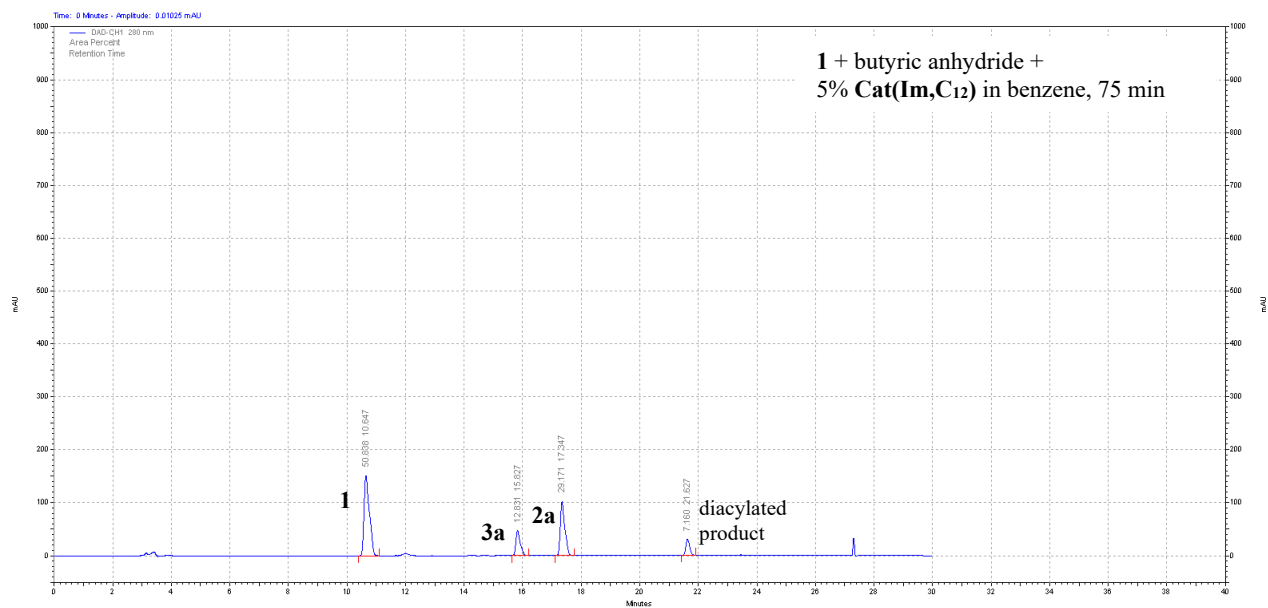
(acylation only; for phosphorylation, see the SI of ref. 12 in the article)



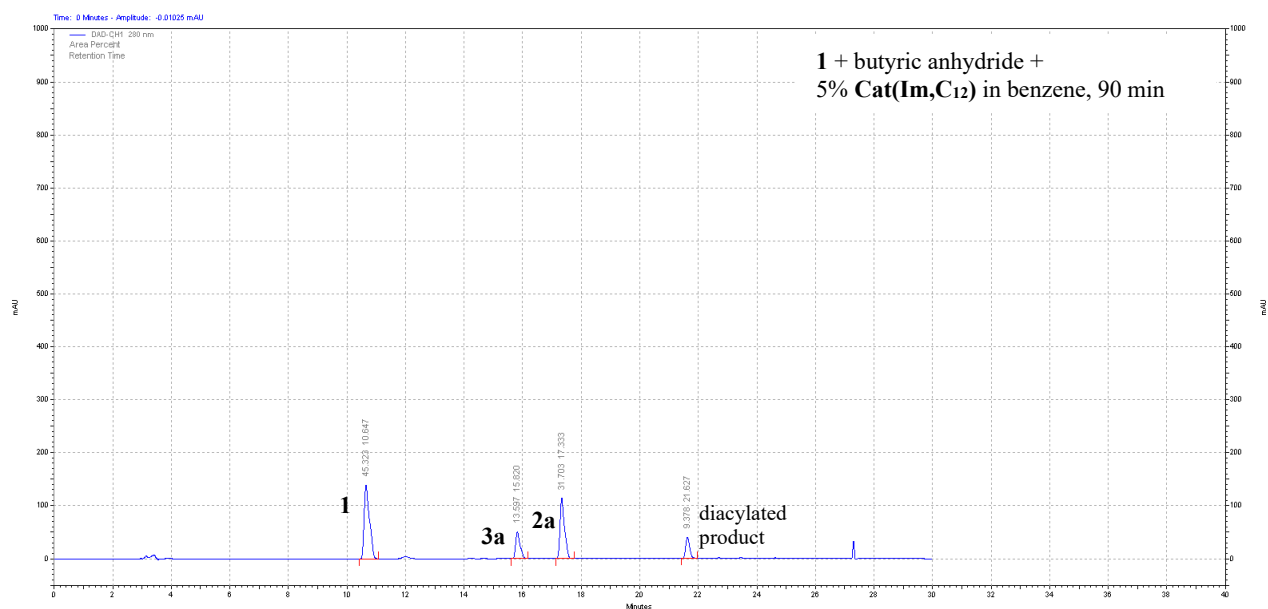
Integration (%): **1** 50.96; **2a** 27.81; **3a** 14.21; diacylated product 7.12.



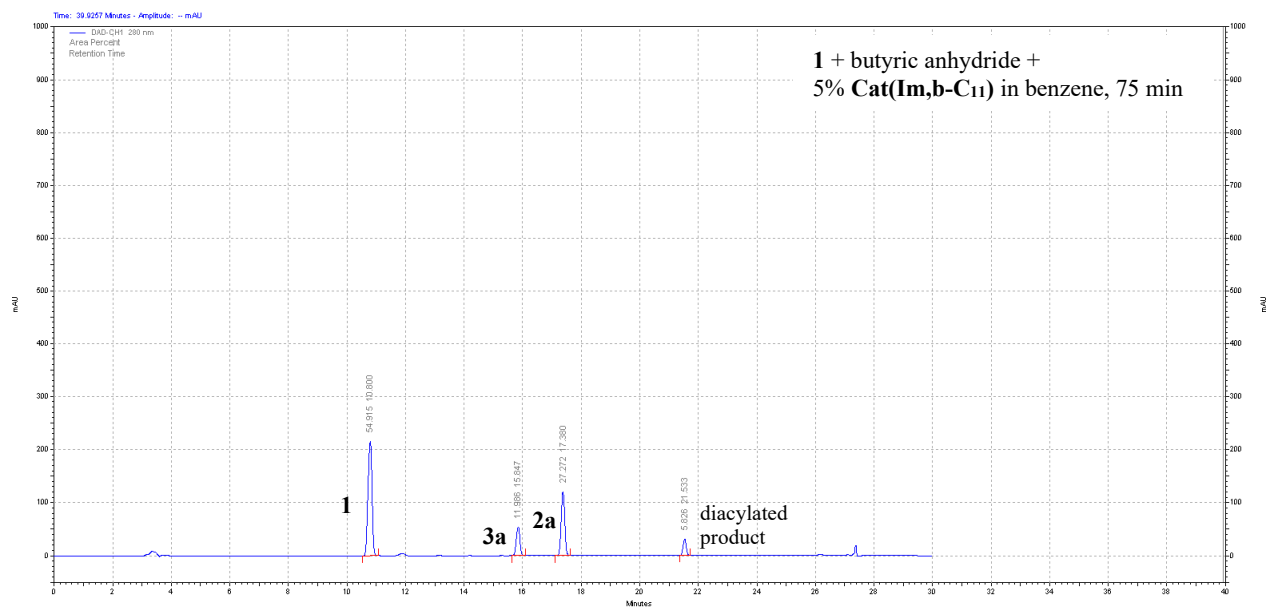
Integration (%): **1** 47.38; **2a** 29.45; **3a** 14.73; diacylated product 8.45.



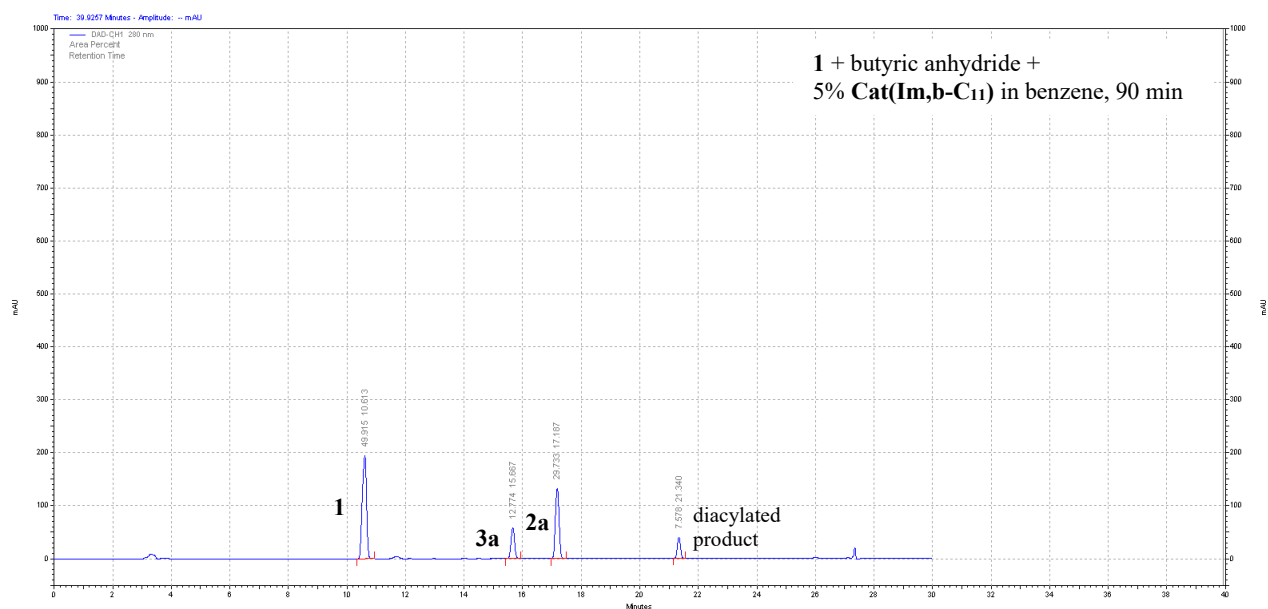
Integration (%): **1** 50.84; **2a** 29.17; **3a** 12.83; diacylated product 7.16.



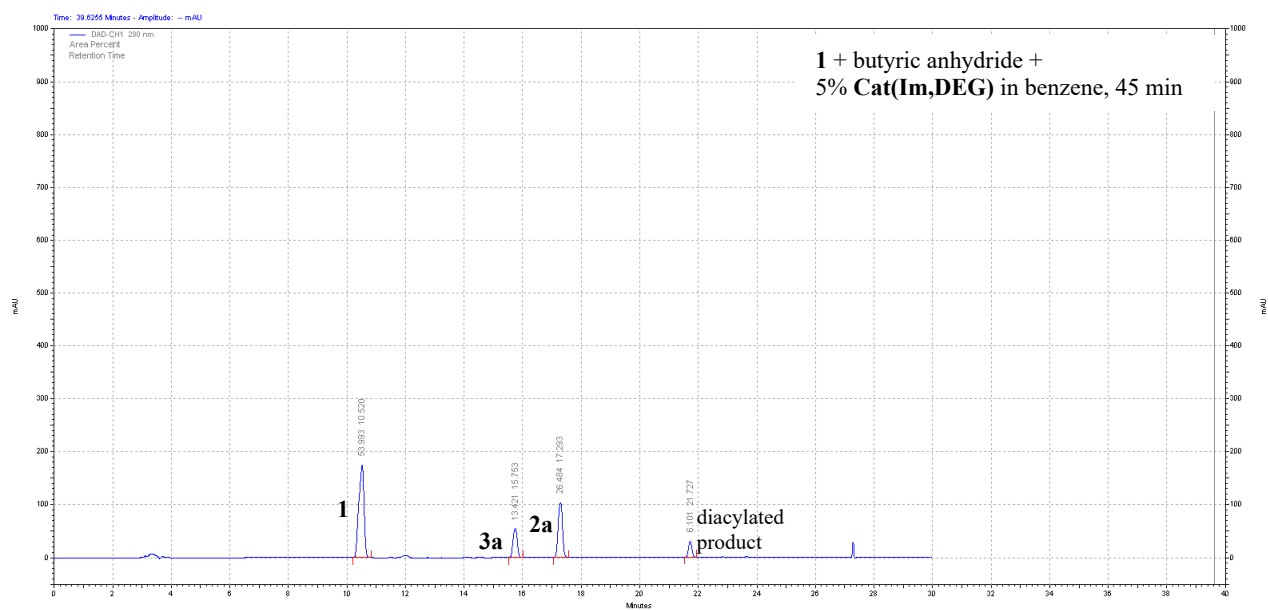
Integration (%): **1** 45.32; **2a** 31.70; **3a** 13.60; diacylated product 9.38.



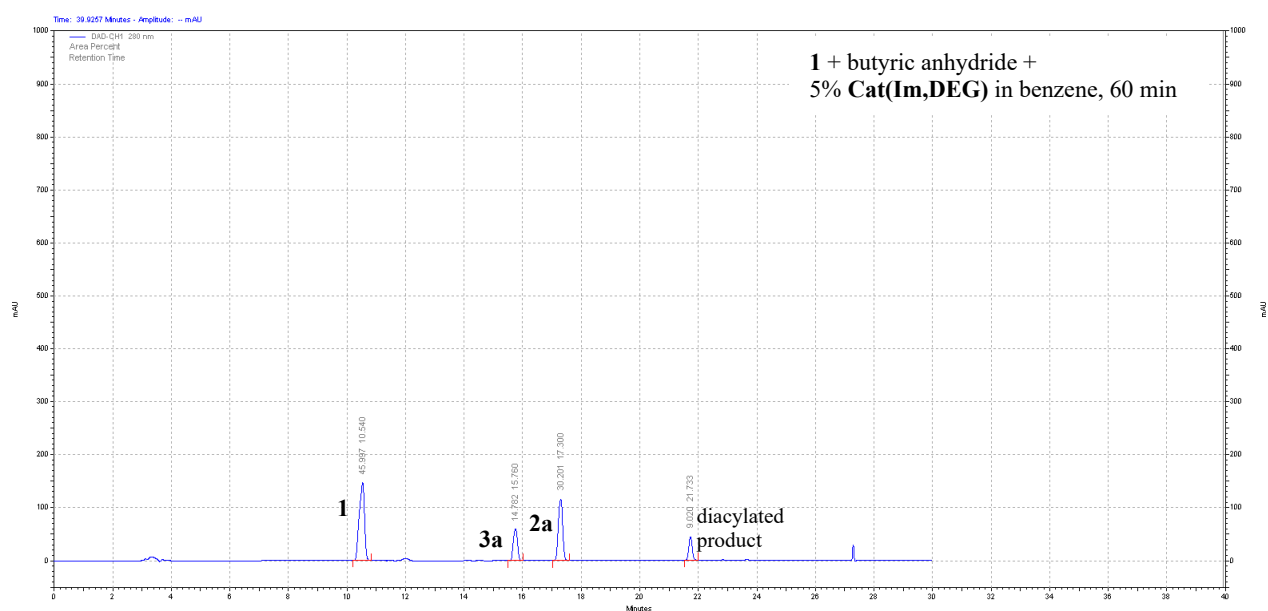
Integration (%): **1** 54.92; **2a** 27.27; **3a** 11.99; diacylated product 5.83.



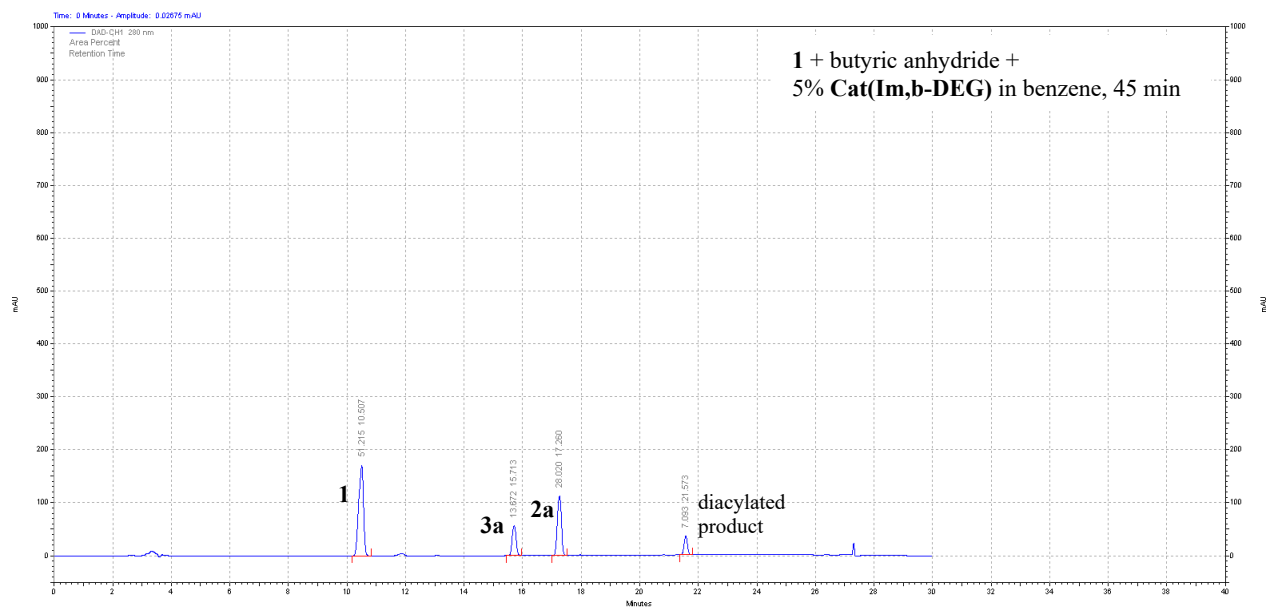
Integration (%): **1** 49.92; **2a** 29.73; **3a** 12.77; diacylated product 7.58.



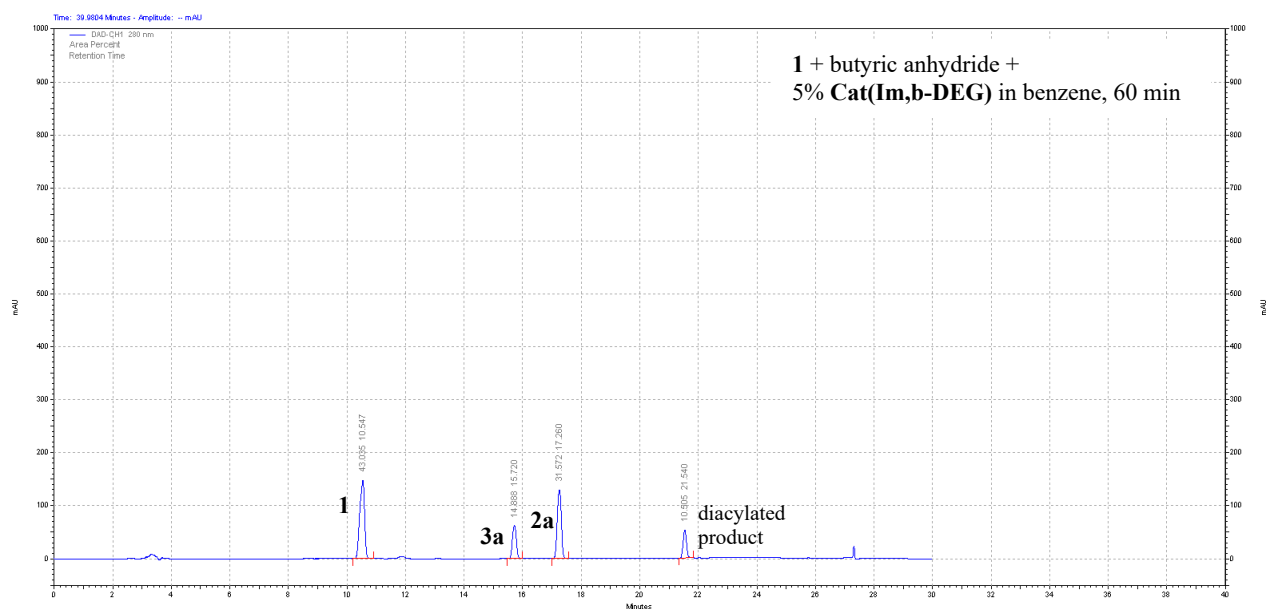
Integration (%): **1** 53.99; **2a** 26.48; **3a** 13.42; diacylated product 6.10.



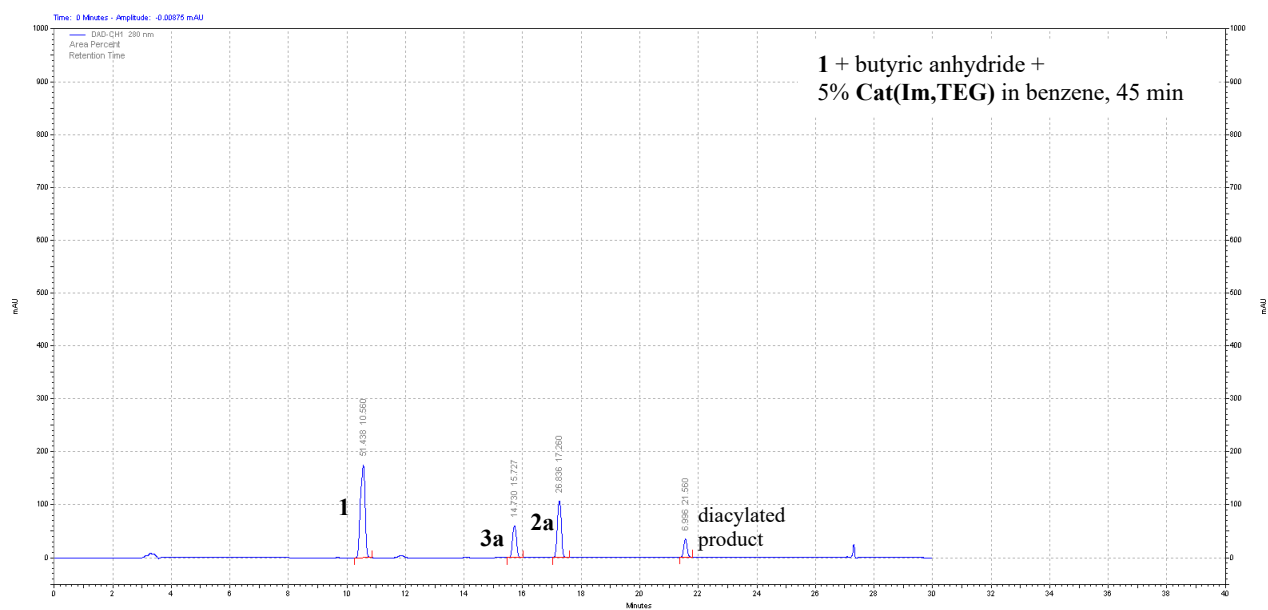
Integration (%): **1** 46.00; **2a** 30.20; **3a** 14.78; diacylated product 9.02.



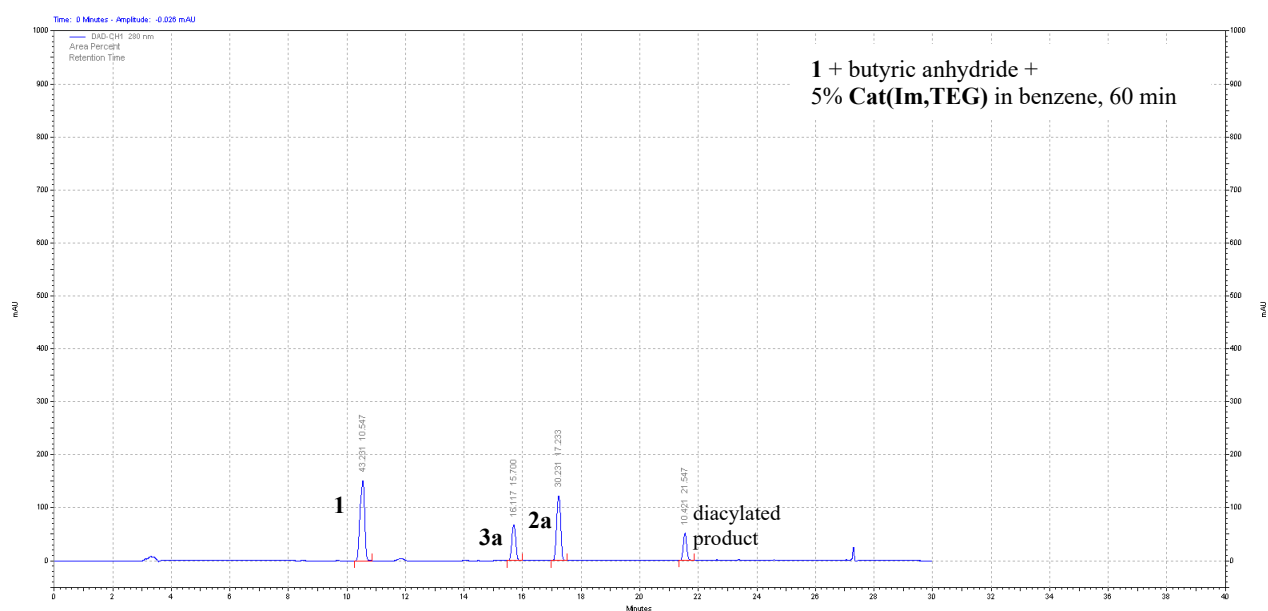
Integration (%): **1** 51.22; **2a** 28.02; **3a** 13.67; diacylated product 7.09.



Integration (%): **1** 43.04; **2a** 31.57; **3a** 14.89; diacylated product 10.51.



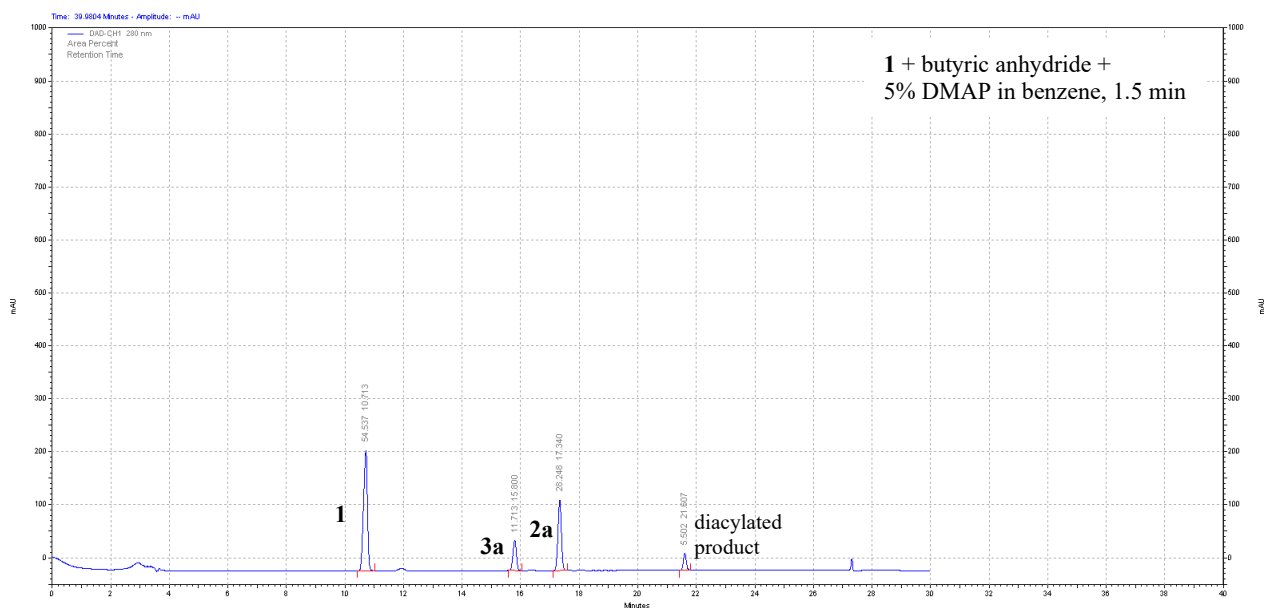
Integration (%): **1** 51.44; **2a** 26.84; **3a** 14.73; diacylated product 7.00.



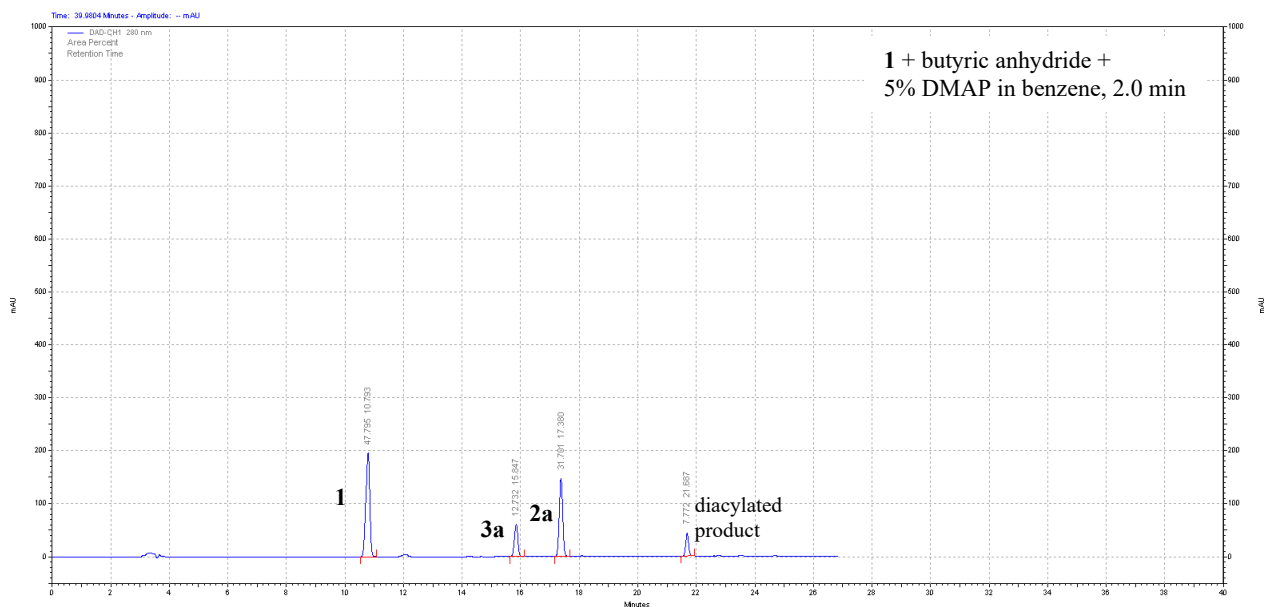
Integration (%): **1** 43.23; **2a** 30.23; **3a** 16.12; diacylated product 10.42.

4. Representative HPLC Traces for Table 4

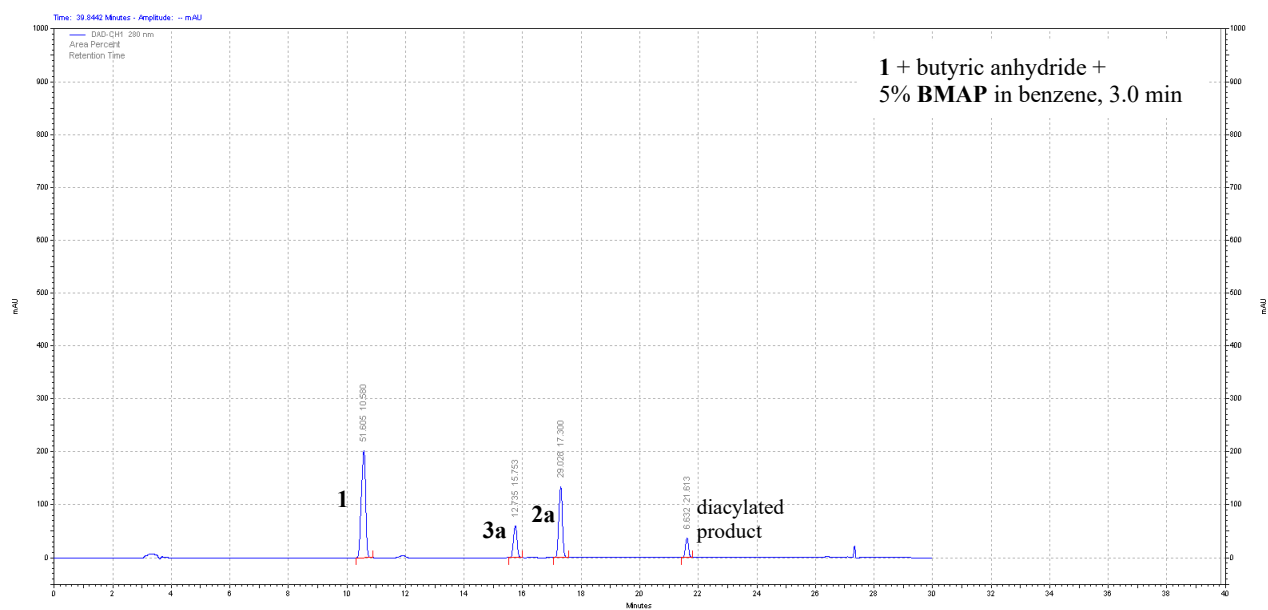
(acylation only; for phosphorylation, see the SI of ref. 12 in the article)



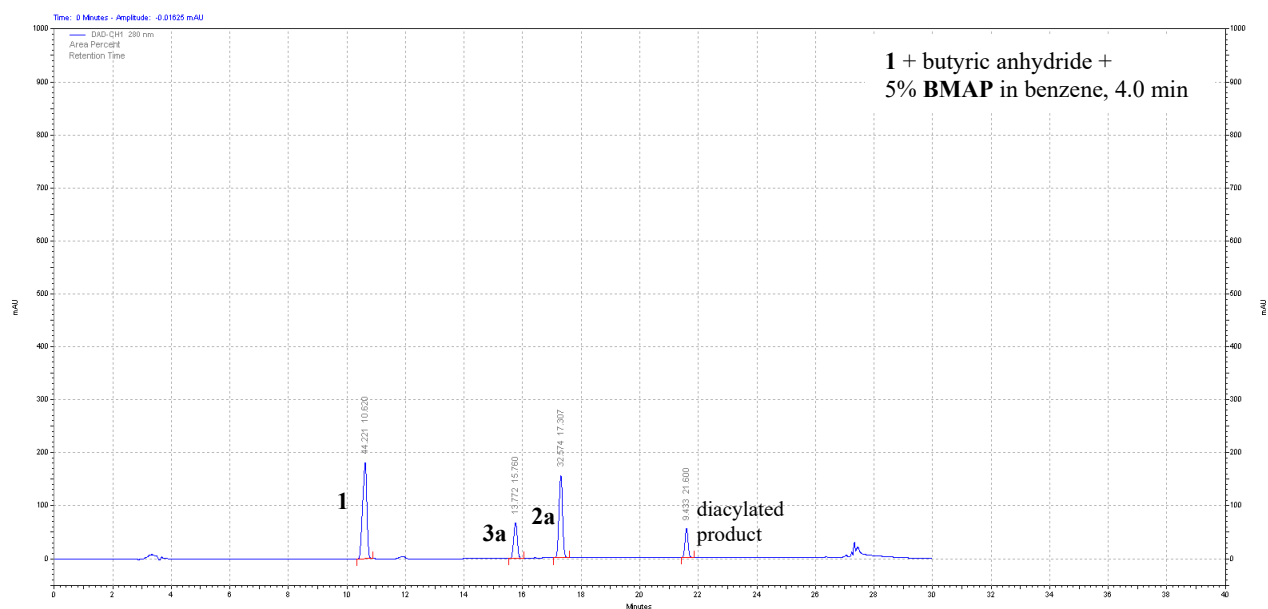
Integration (%): **1** 54.54; **2a** 28.25; **3a** 11.71; diacylated product 5.50.



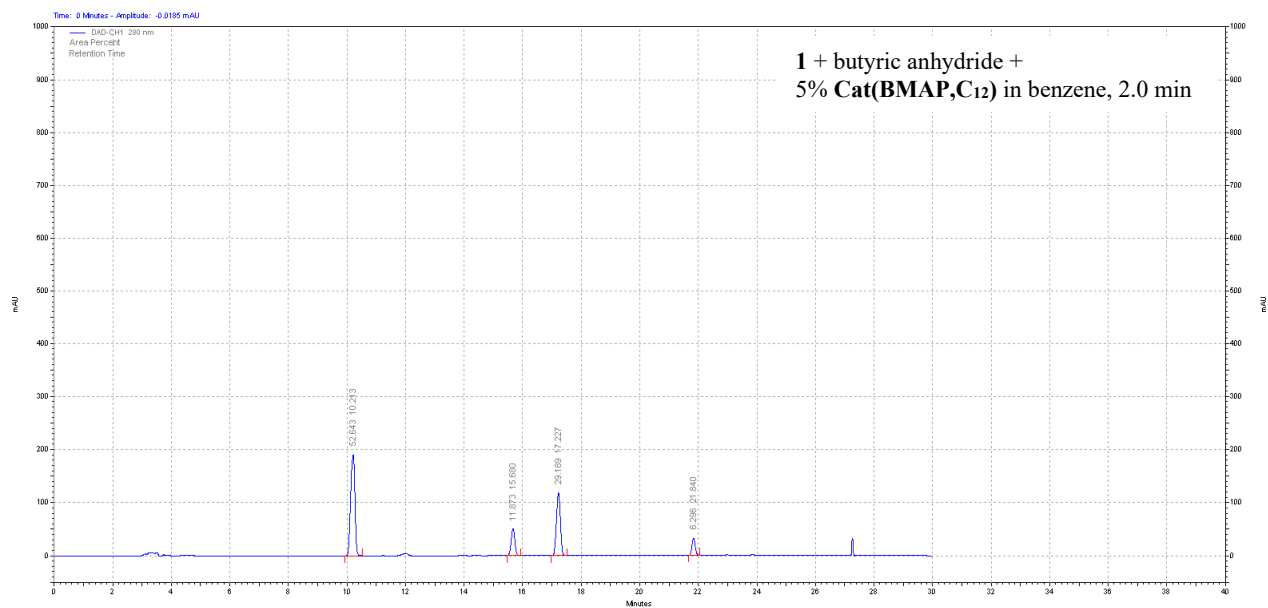
Integration (%): **1** 47.80; **2a** 31.70; **3a** 12.73; diacylated product 7.77.



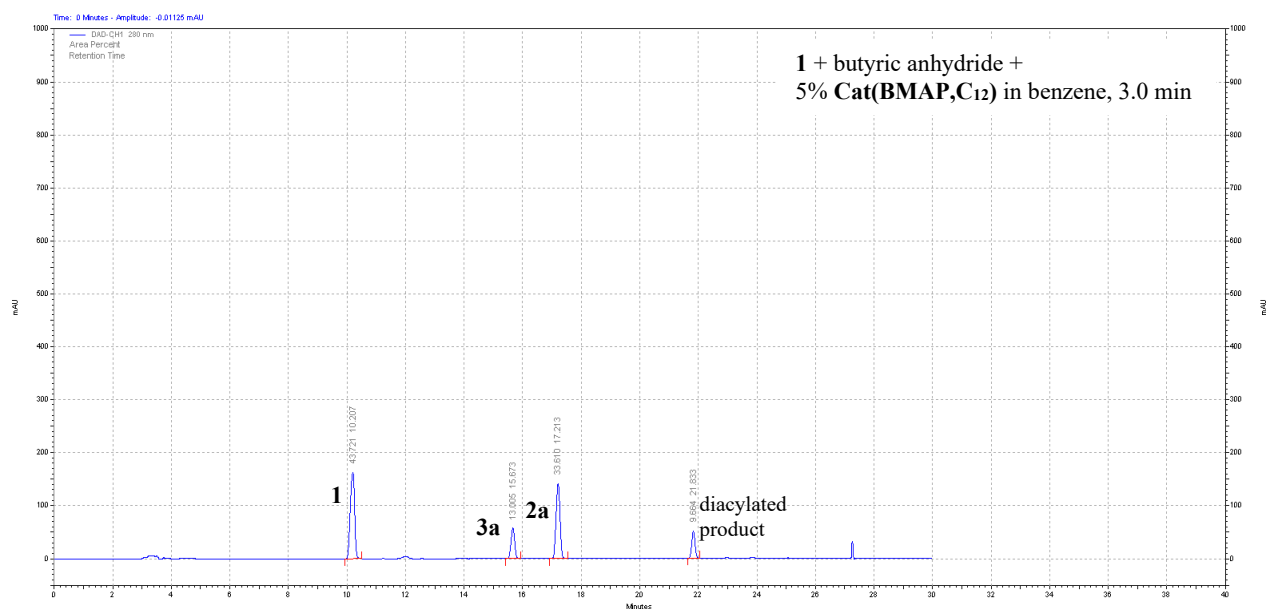
Integration (%): 1 51.61; 2a 29.03; 3a 12.74; diacylated product 6.63.



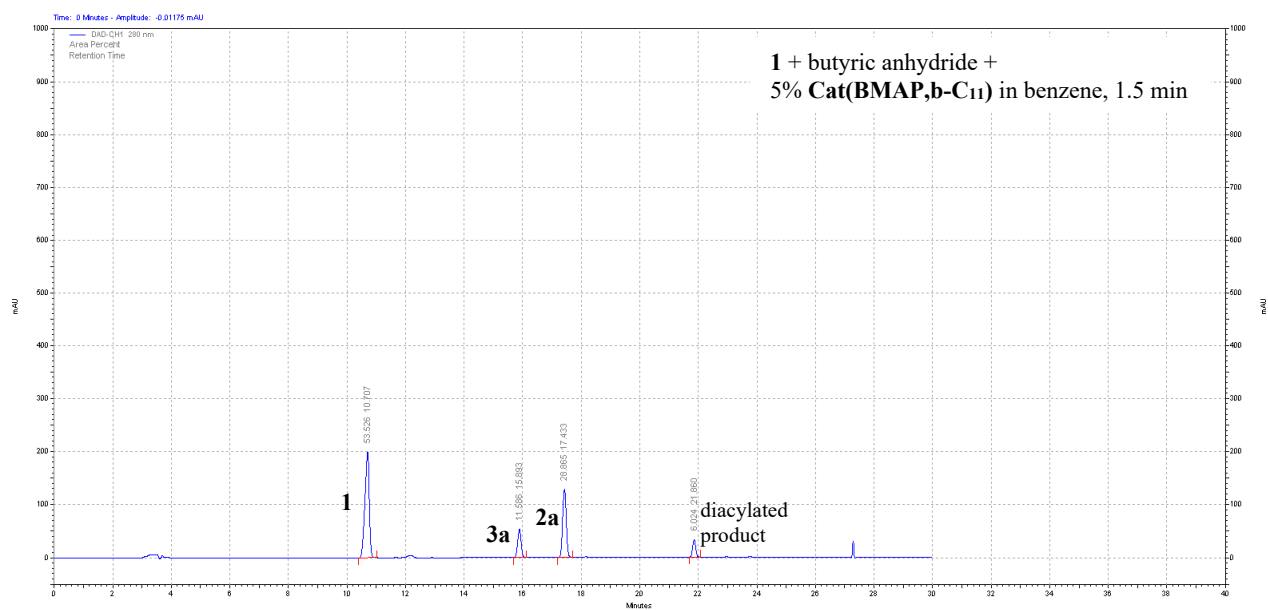
Integration (%): 1 44.22; 2a 32.57; 3a 13.77; diacylated product 9.43.



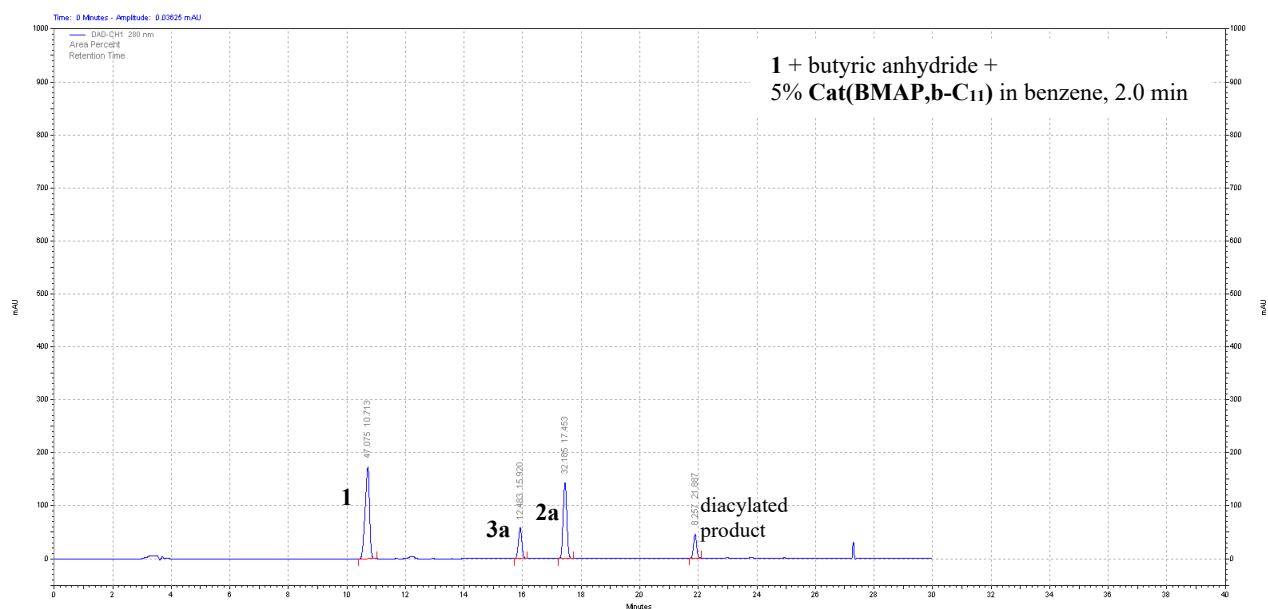
Integration (%): 1 52.64; 2a 29.19; 3a 11.87; diacylated product 6.30.



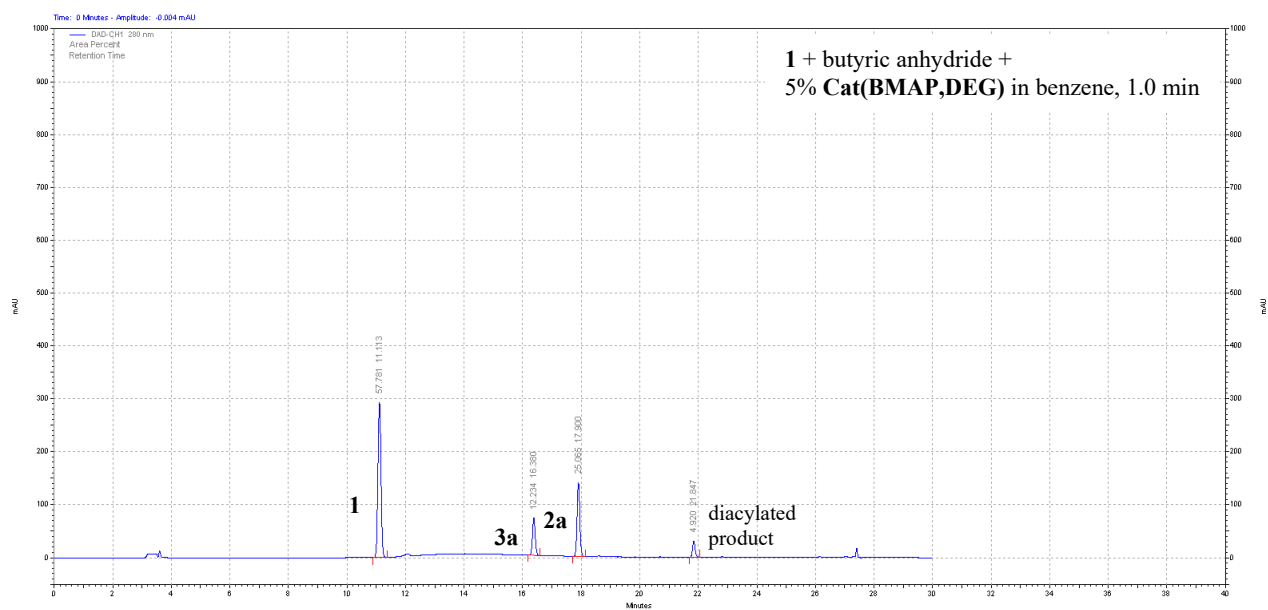
Integration (%): 1 43.72; 2a 33.61; 3a 13.01; diacylated product 9.66.



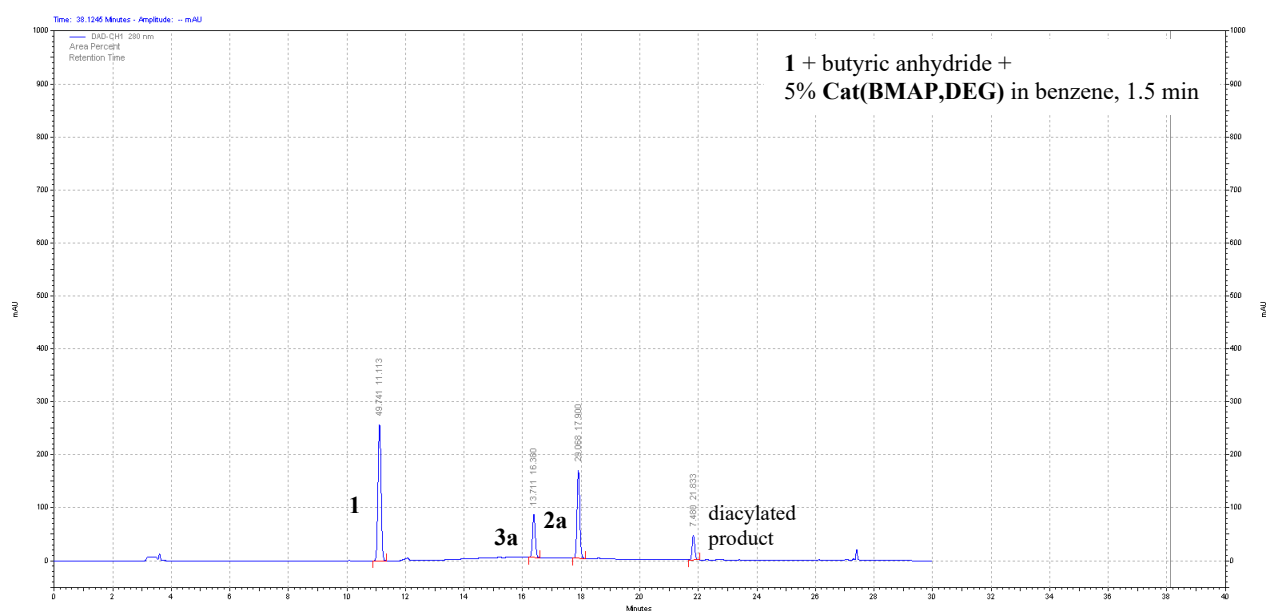
Integration (%): 1 53.53; 2a 28.87; 3a 11.59; diacylated product 6.02.



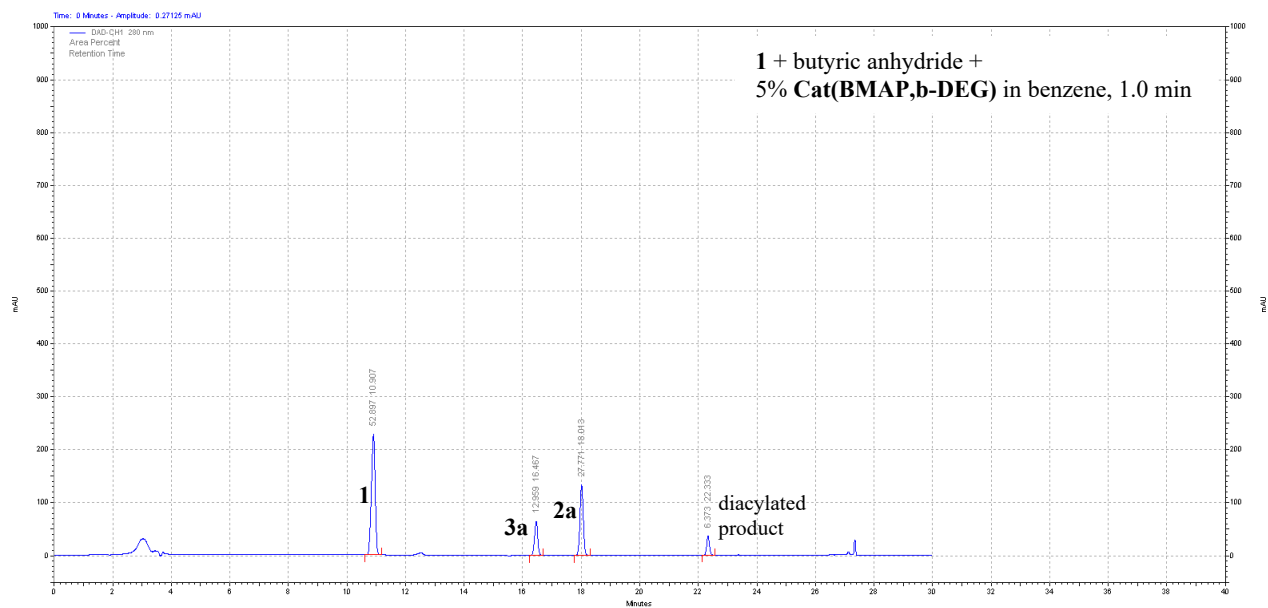
Integration (%): 1 47.08; 2a 31.19; 3a 12.48; diacylated product 8.26.



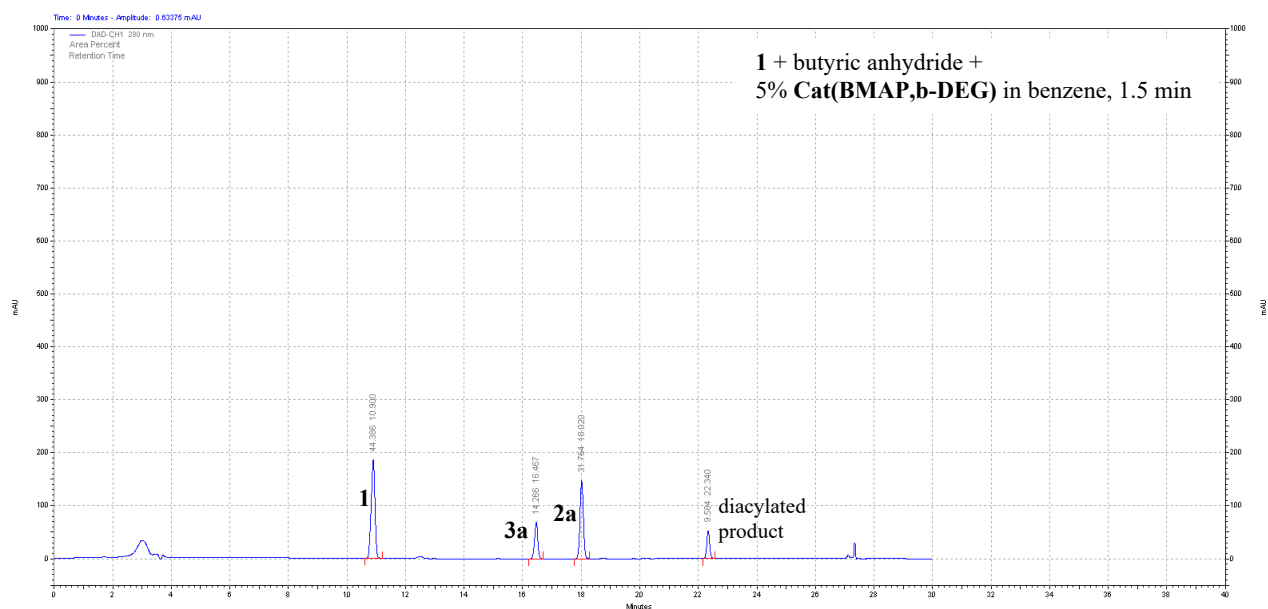
Integration (%): 1 57.78; 2a 25.07; 3a 12.23; diacylated product 4.92.



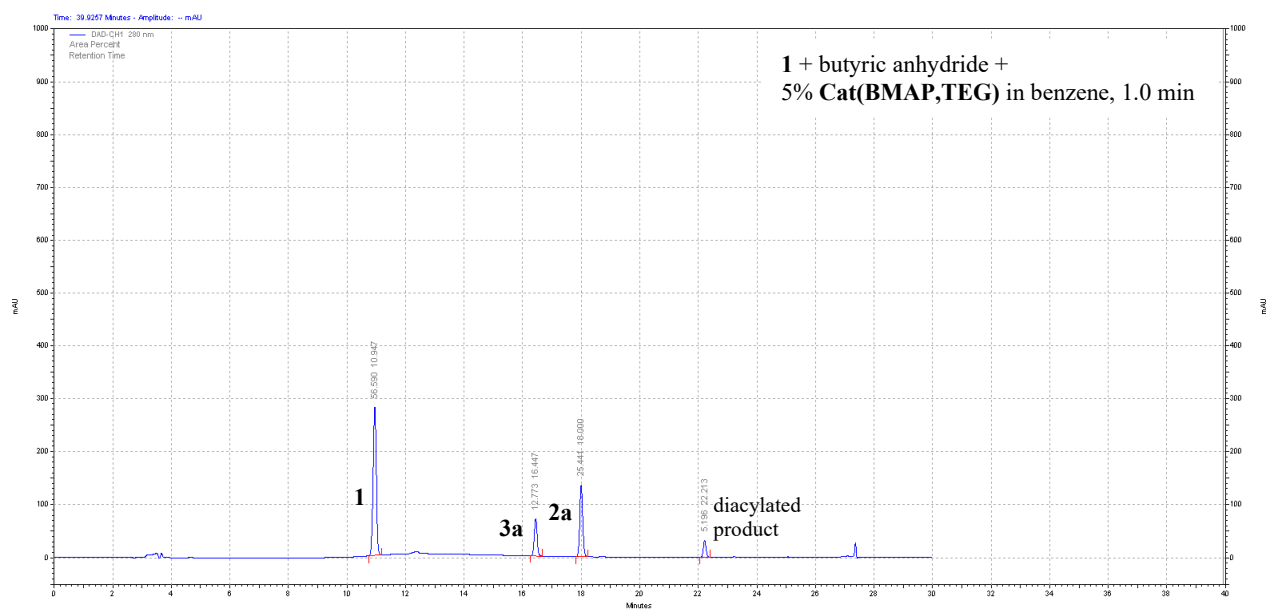
Integration (%): 1 49.74; 2a 29.07; 3a 12.23; diacylated product 7.48.



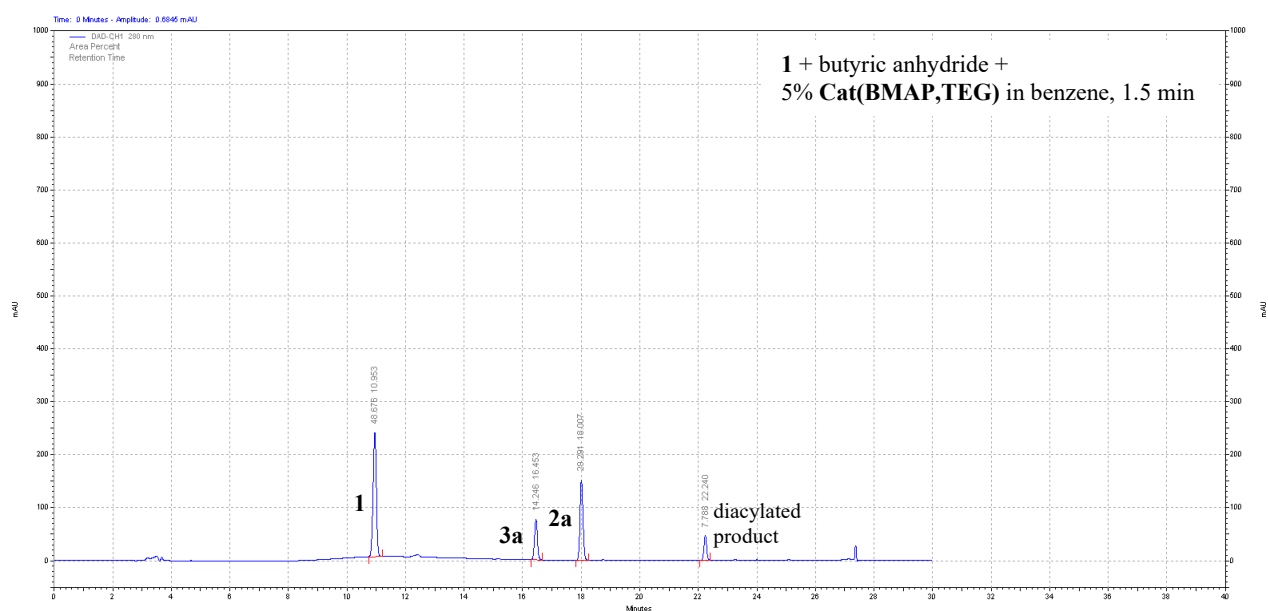
Integration (%): 1 52.90; 2a 27.77; 3a 12.96; diacylated product 6.37.



Integration (%): 1 44.39; 2a 31.76; 3a 14.27; diacylated product 9.58.

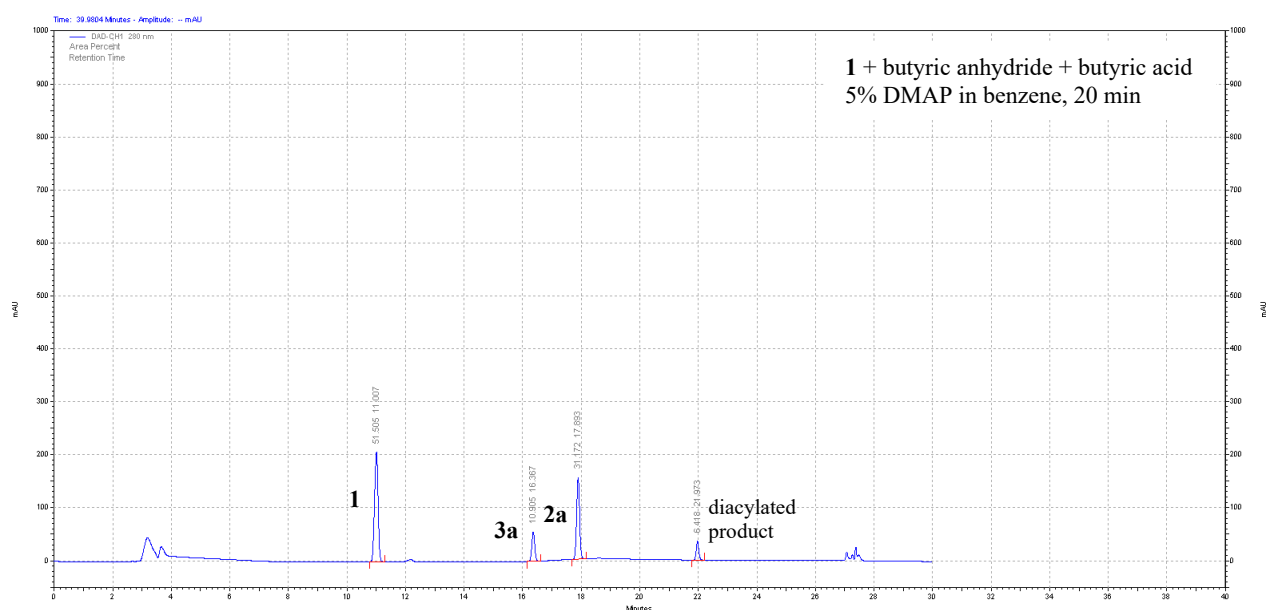


Integration (%): 1 56.59; 2a 25.44; 3a 12.77; diacylated product 5.20.

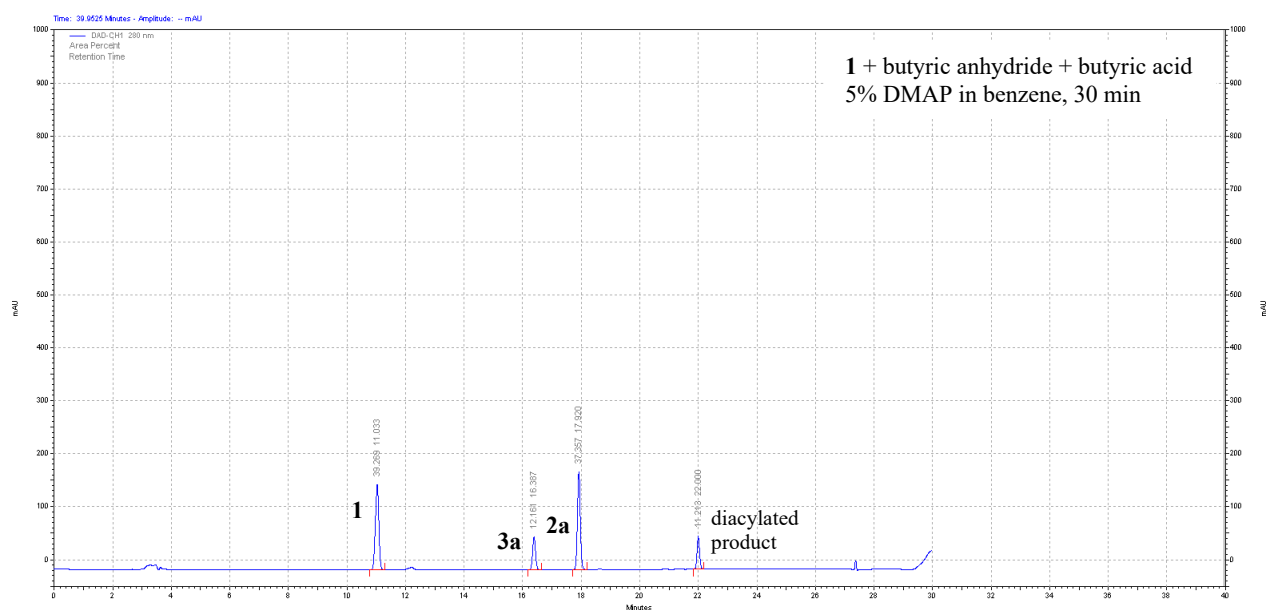


Integration (%): 1 48.68; 2a 29.29; 3a 14.25; diacylated product 7.79.

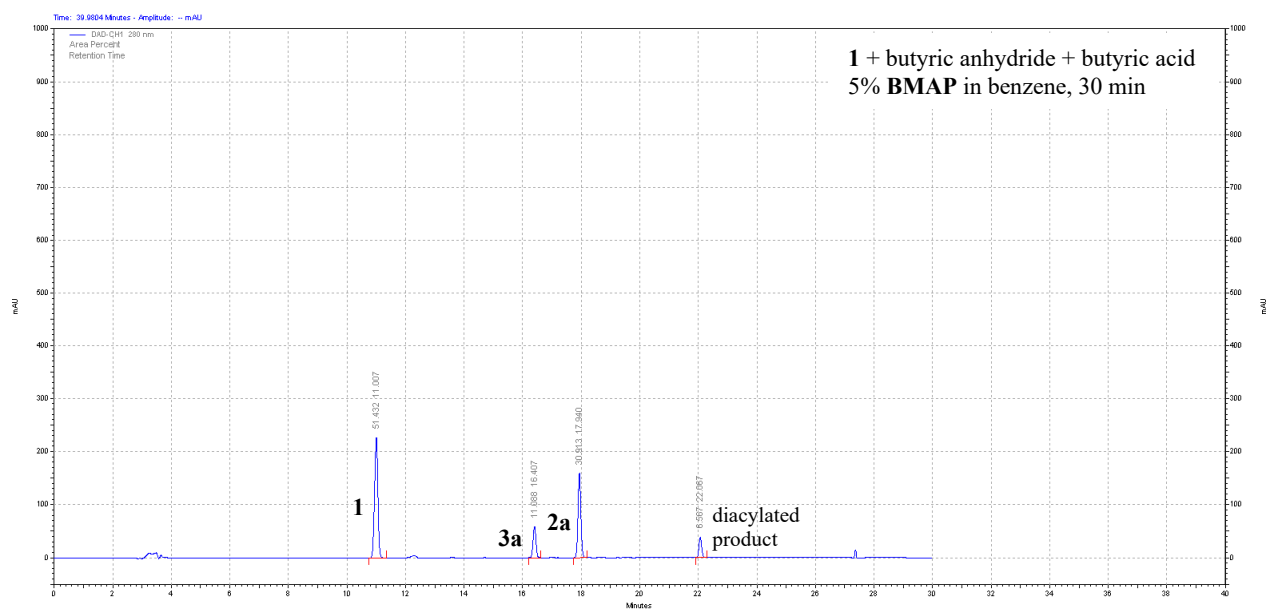
5. Representative HPLC Traces for Table 5



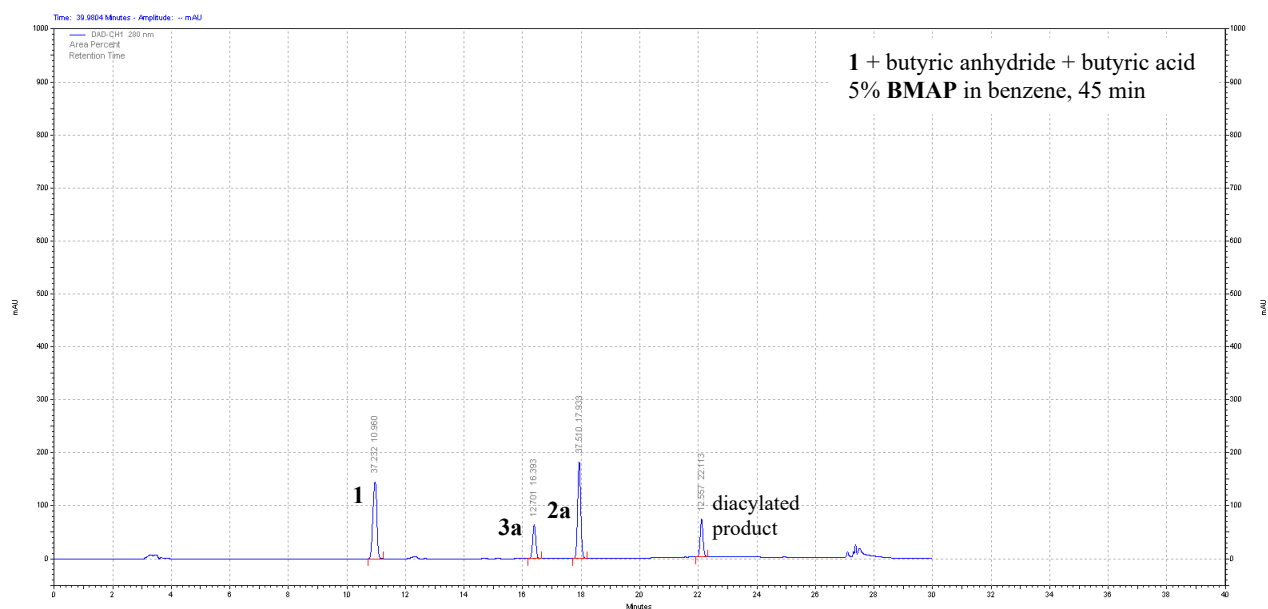
Integration (%): **1** 51.51; **2a** 31.17; **3a** 10.91; diacylated product 6.42.



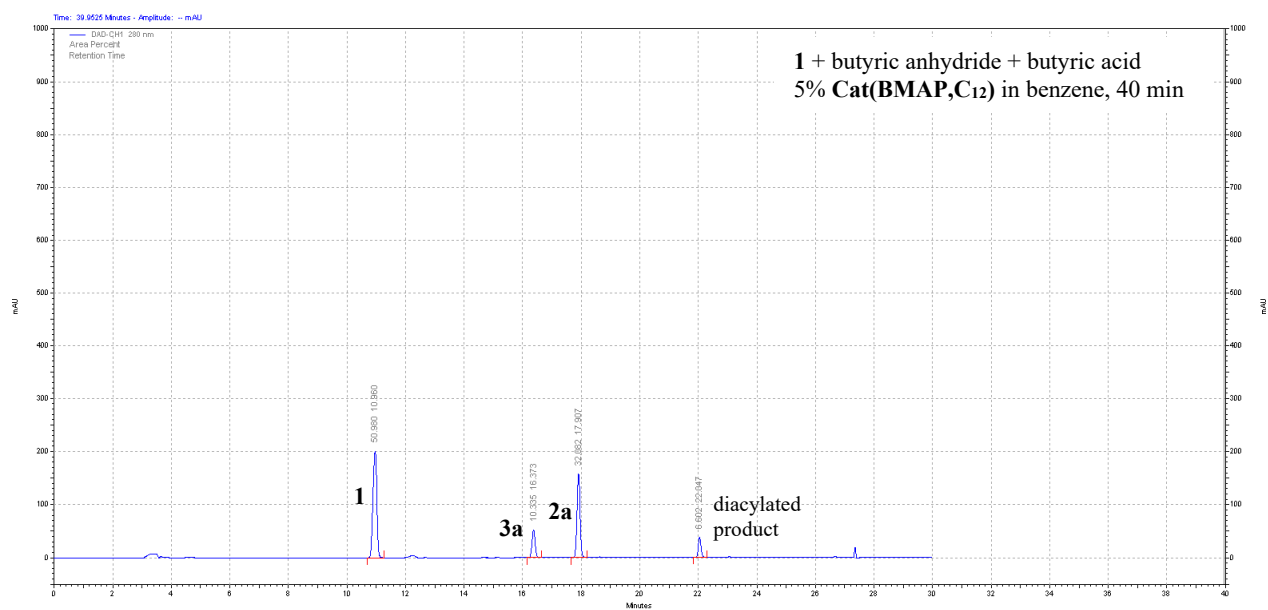
Integration (%): **1** 39.27; **2a** 37.36; **3a** 12.16; diacylated product 11.21.



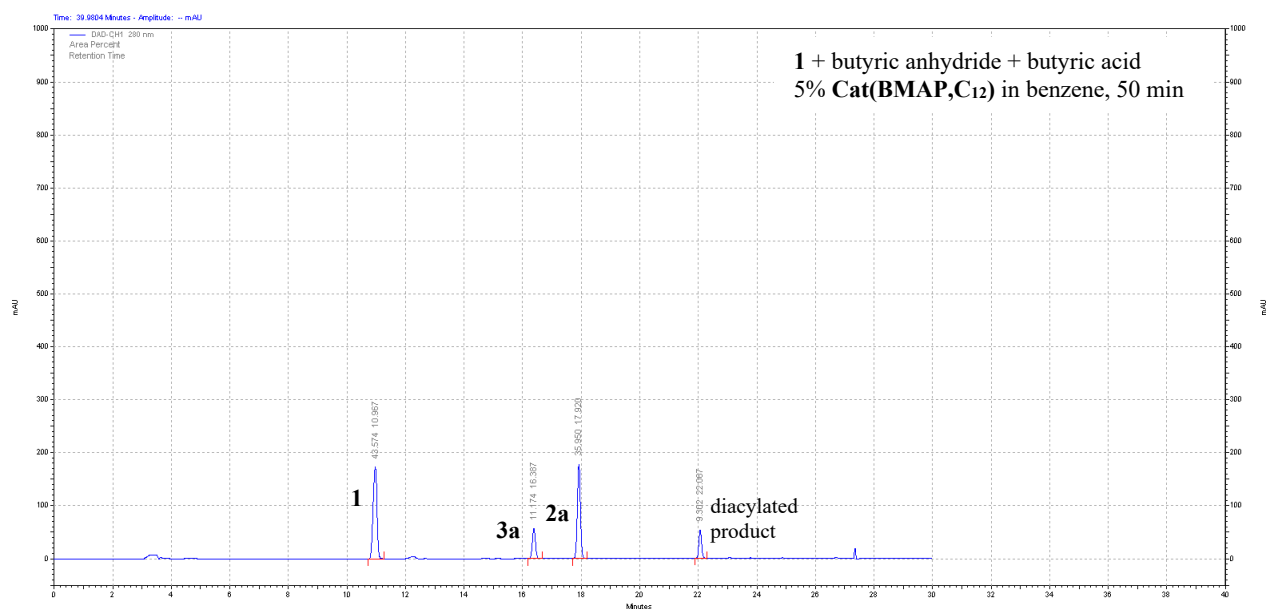
Integration (%): 1 51.43; 2a 30.91; 3a 11.09; diacylated product 6.59.



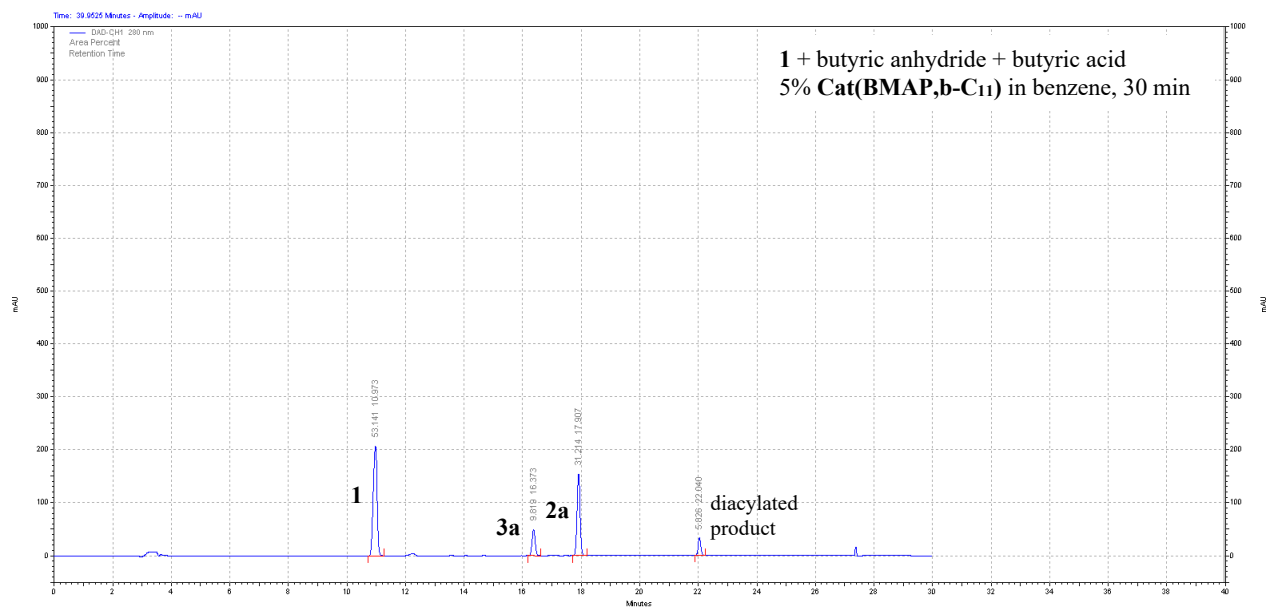
Integration (%): 1 37.23; 2a 37.51; 3a 12.70; diacylated product 12.56.



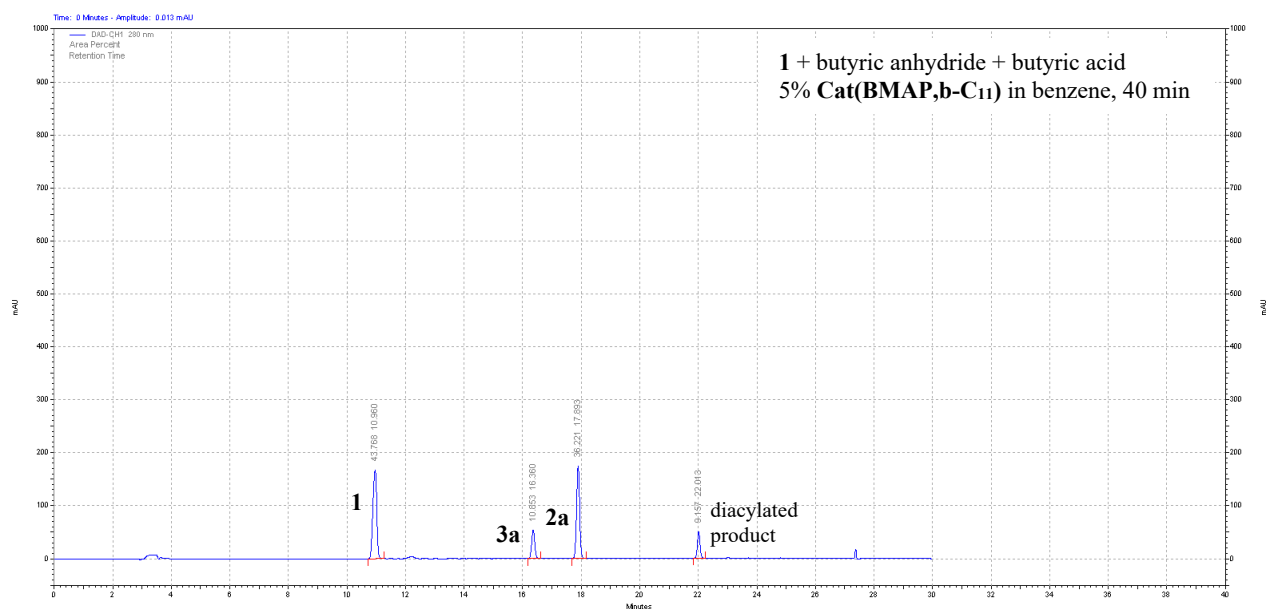
Integration (%): 1 50.98; 2a 32.08; 3a 10.34; diacylated product 6.60.



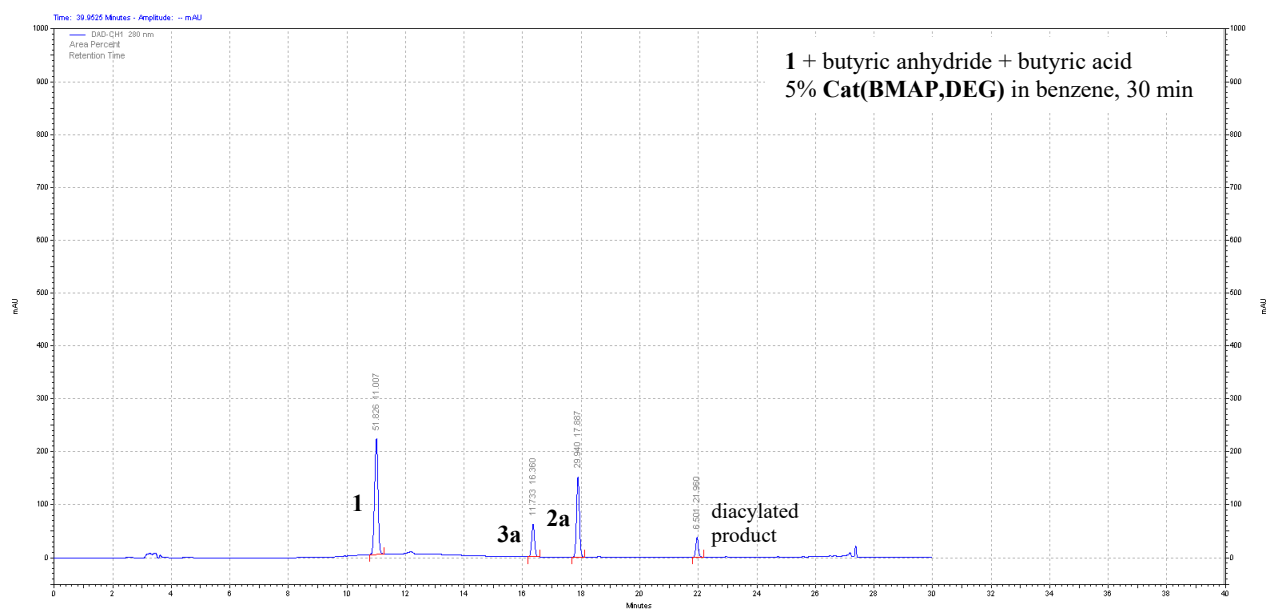
Integration (%): 1 43.57; 2a 35.95; 3a 11.17; diacylated product 9.30.



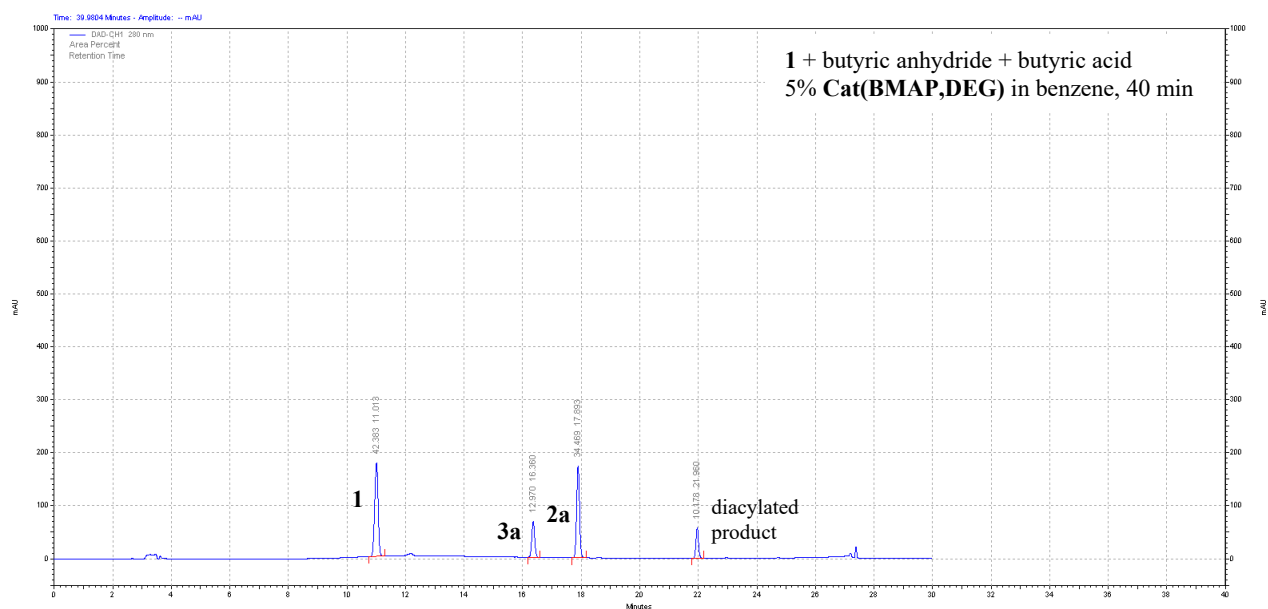
Integration (%): 1 53.14; 2a 31.21; 3a 9.82; diacylated product 5.83.



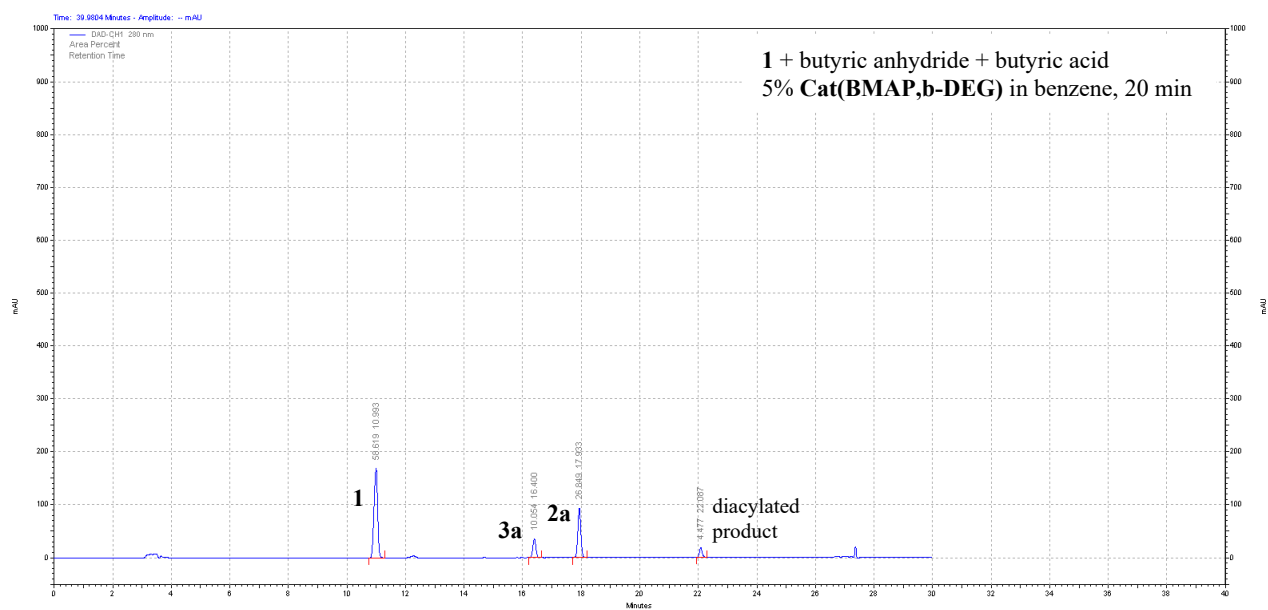
Integration (%): 1 43.77; 2a 36.22; 3a 10.85; diacylated product 9.16.



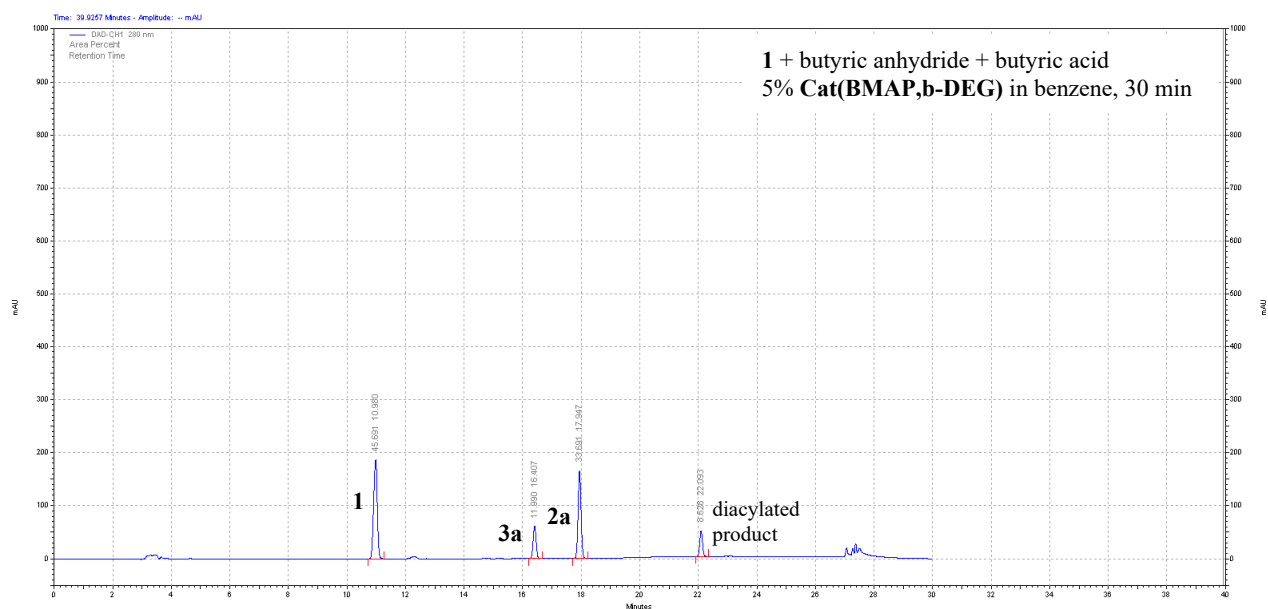
Integration (%): **1** 51.83; **2a** 29.94; **3a** 11.73; diacylated product 6.50.



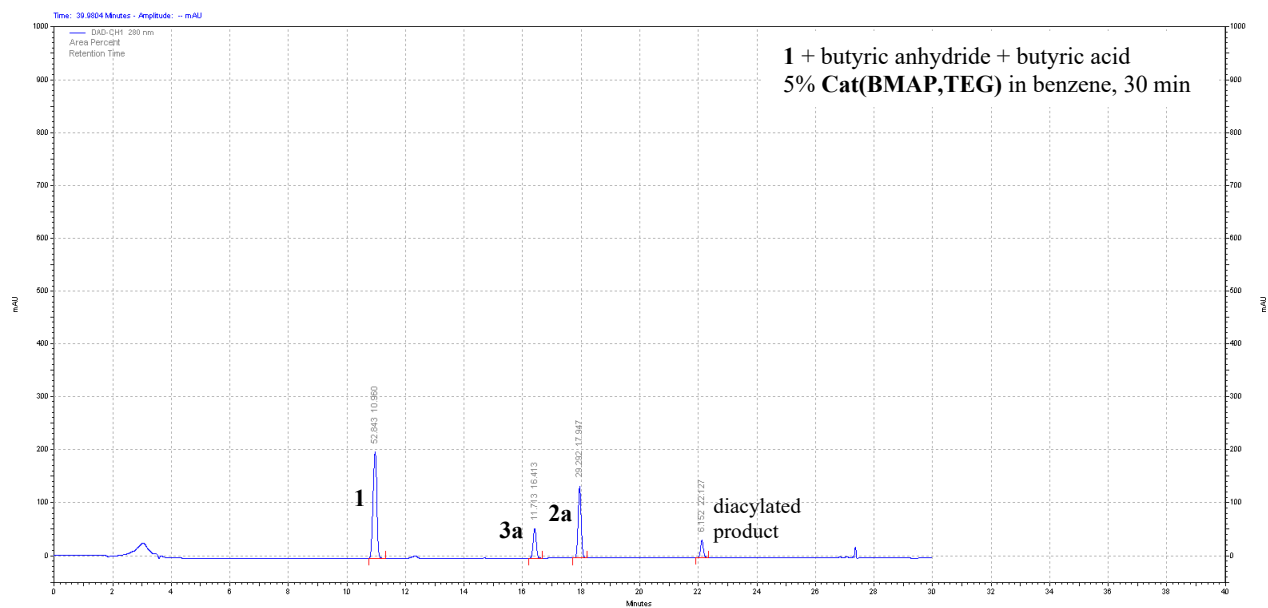
Integration (%): **1** 42.38; **2a** 34.47; **3a** 12.97; diacylated product 10.18.



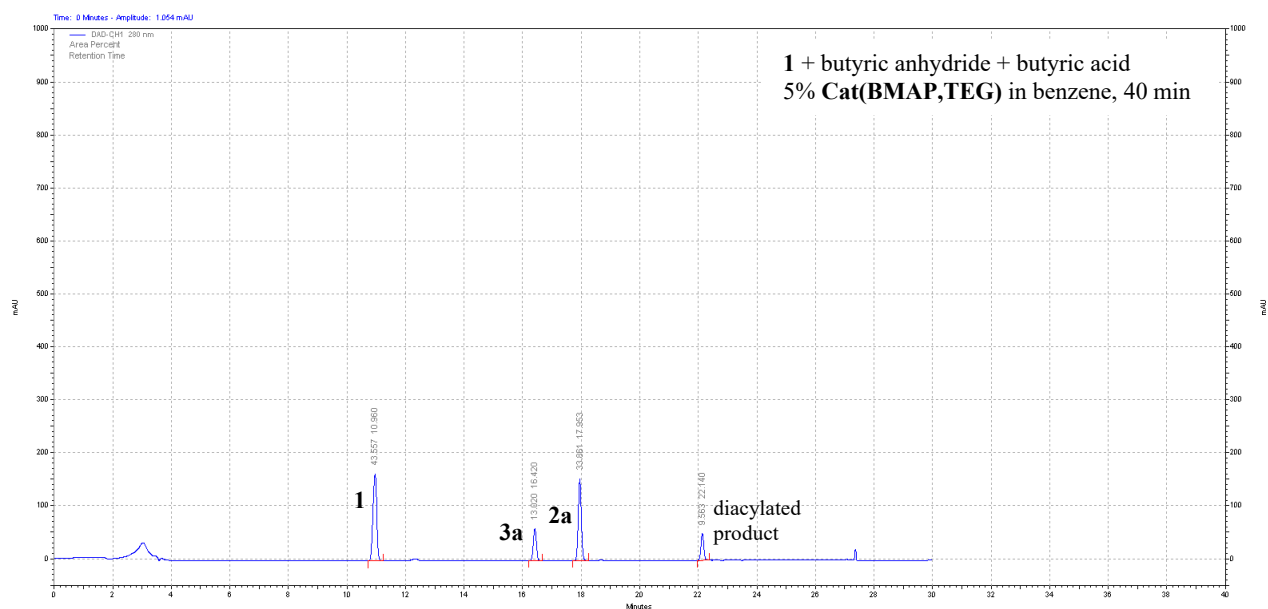
Integration (%): 1 58.62; 2a 26.85; 3a 10.05; diacylated product 4.48.



Integration (%): 1 45.69; 2a 33.69; 3a 11.99; diacylated product 8.63.



Integration (%): **1** 52.84; **2a** 29.29; **3a** 11.71; diacylated product 6.15.



Integration (%): **1** 43.56; **2a** 33.86; **3a** 13.02; diacylated product 9.56.