

Supplementary Materials: Promotional Effect of Gold on the WGS Activity of Alumina-Supported Copper-Manganese Mixed Oxides

Tatyana Tabakova ^{1,*}, Ivan Ivanov ¹, Yordanka Karakirova ¹, Daniela Karashanova ², Anna Maria Venezia ³, Petya Petrova ¹, Georgi Avdeev ⁴, Elitsa Kolentsova ⁵ and Krasimir Ivanov ⁵

¹ Institute of Catalysis, Bulgarian Academy of Sciences, 1113 Sofia, Bulgaria; bogoev@ic.bas.bg (I.I.); daniepr@ic.bas.bg (Y.K.); petia@ic.bas.bg (P.P.)

² Institute of Optical Materials and Technologies, Bulgarian Academy of Sciences, 1113 Sofia, Bulgaria; dkarashanova@gmail.com

³ Istituto per lo Studio dei Materiali Nanostrutturati, CNR, 90146 Palermo, Italy; annamaria.venezia@ismn.cnr.it

⁴ Institute of Physical Chemistry, Bulgarian Academy of Sciences, 1113 Sofia, Bulgaria; g_avdeev@ipc.bas.bg

⁵ Department of Chemistry, Agricultural University, 4000 Plovdiv, Bulgaria; elitsa_kolentsova@abv.bg (E.K.); kivanov1@abv.bg (K.I.)

* Correspondence: tabakova@ic.bas.bg; Tel.: +359-297-925-28

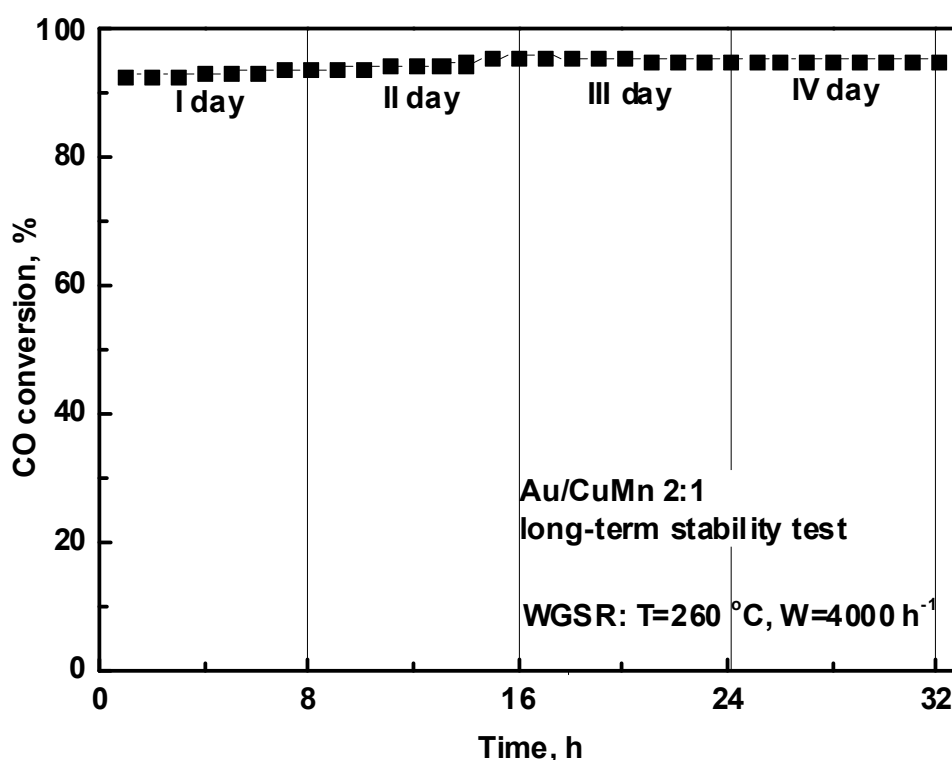
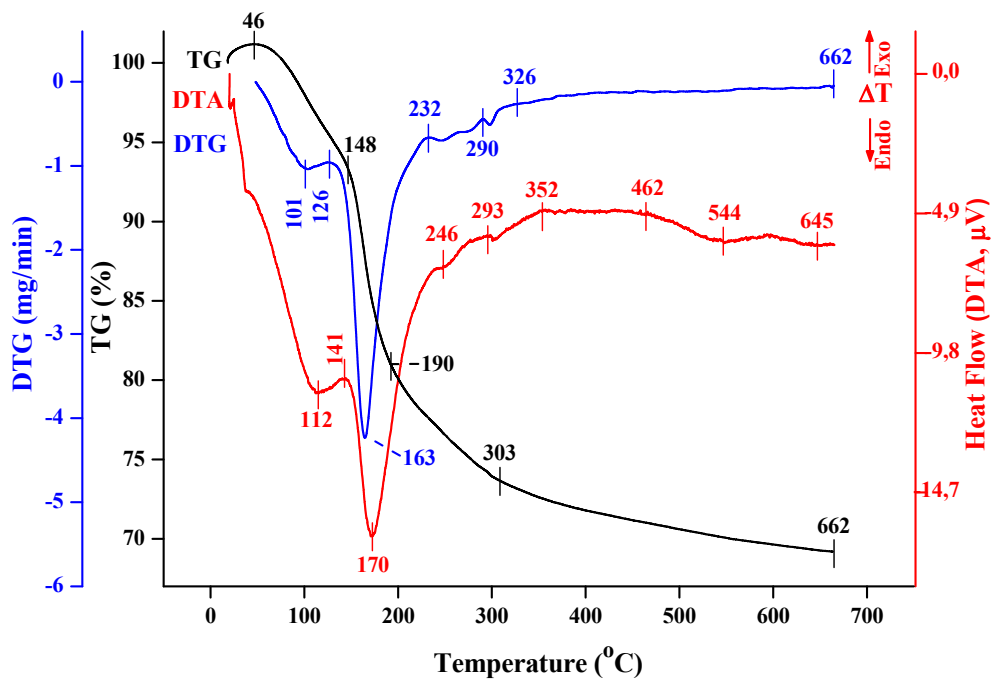
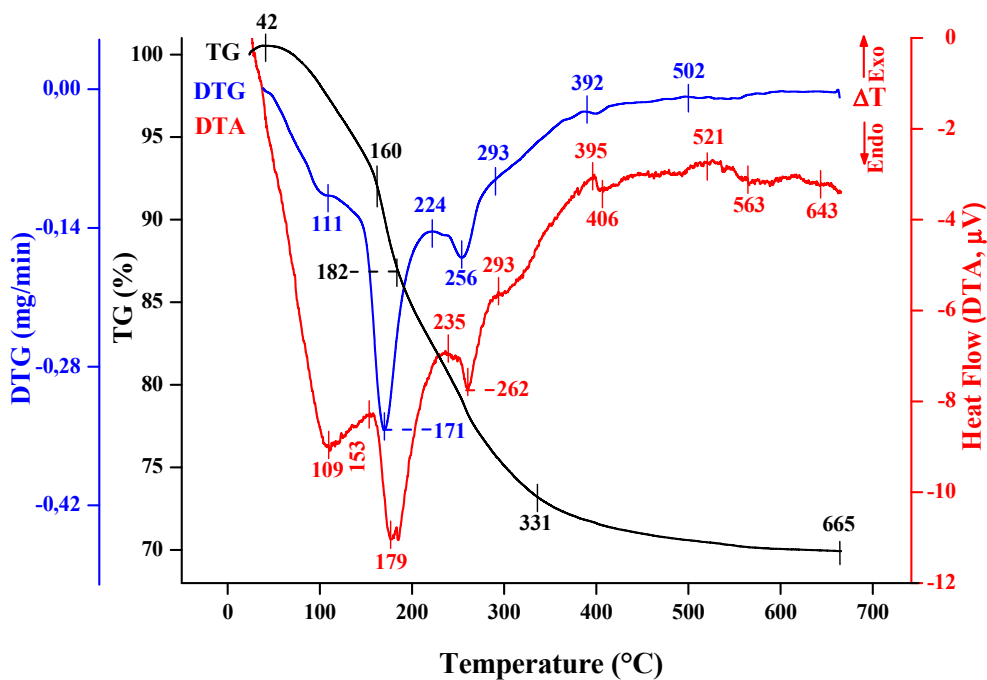


Figure S1. Stability test of Au/CuMn (2:1) catalyst performed for 32 h at 260 °C.



(a)



(b)

Figure S2. Thermal analysis of: (a) CuMn 2:1, (b) CuMn 1:5.

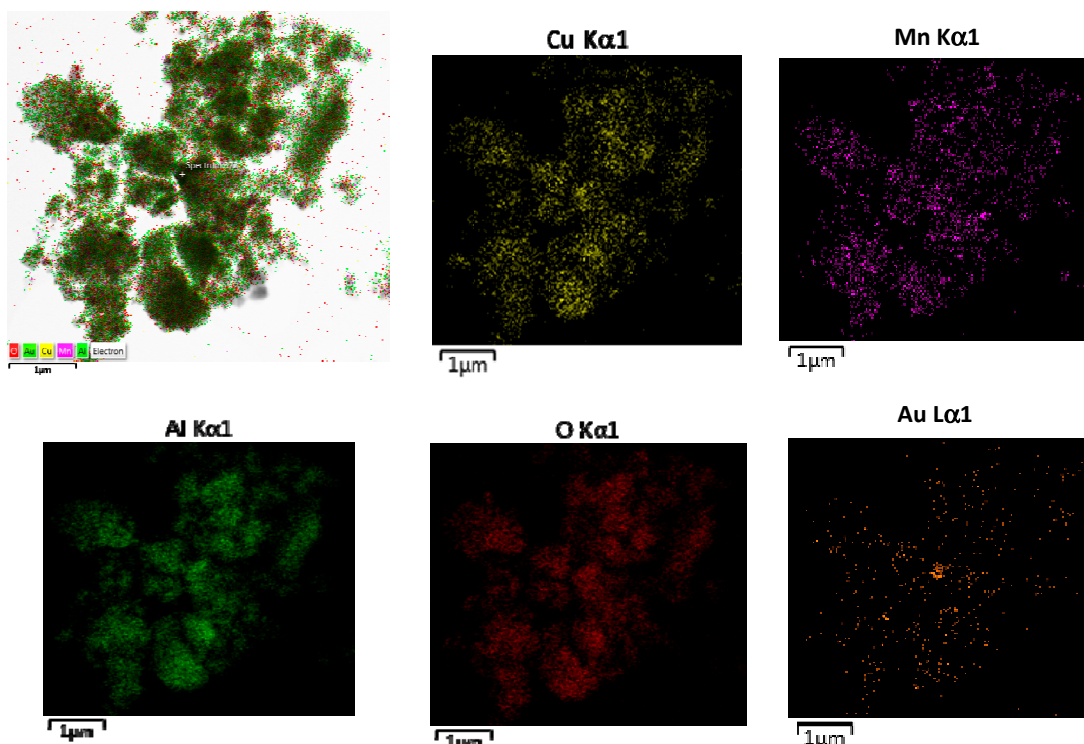


Figure S3. Representative STEM image of: Au/CuMn 2:1 catalyst and relative XEDX mapping distribution of all components.

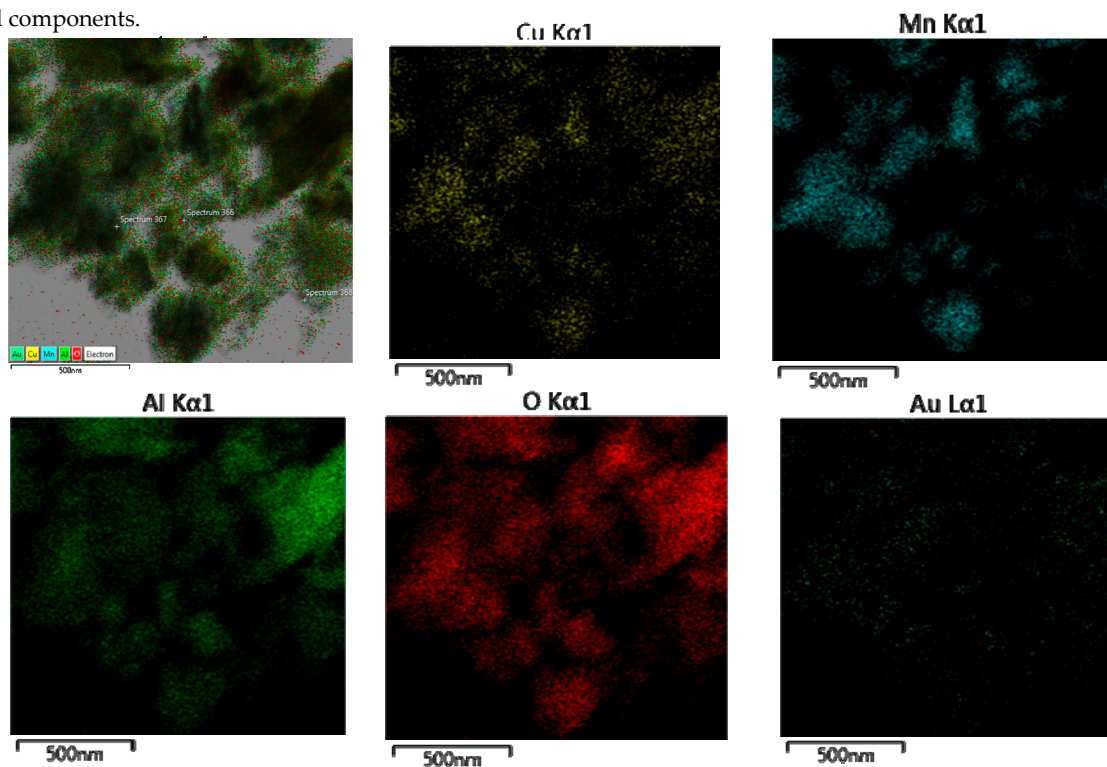


Figure S4. Representative STEM image of: Au/CuMn 1:5 catalyst and relative XEDX mapping distribution of all components.

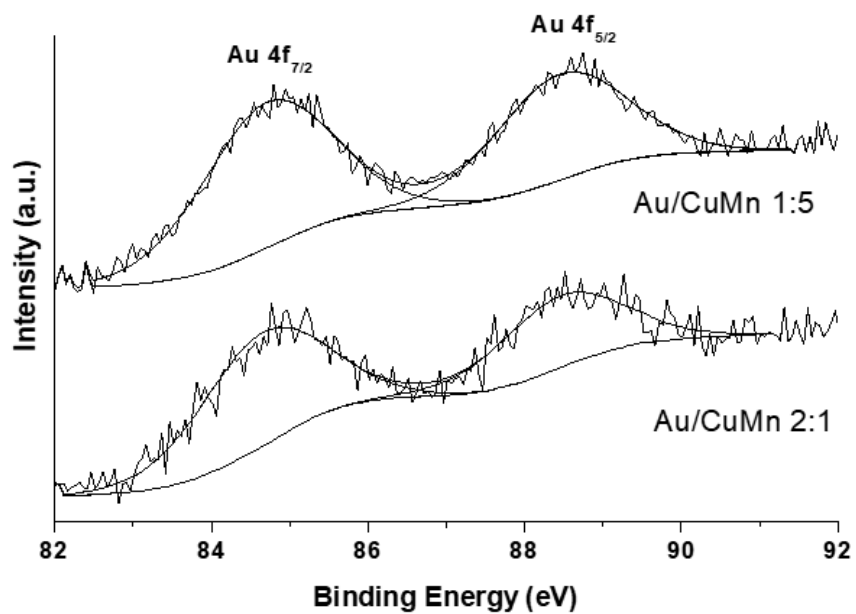


Figure S5. Au 4f XP spectra of gold catalysts on alumina supported CuMn mixed oxides.