

Current Data Parameters

NAME MAJDA A
EXPNO 50
PROCNO 1

F2 - Acquisition Parameters

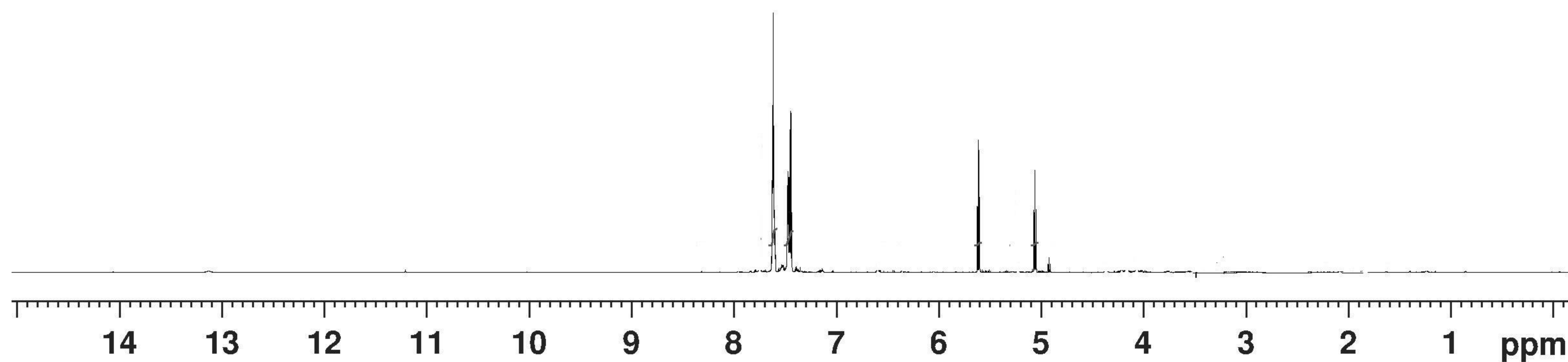
Date_
Time 10.14
INSTRUM spect
PROBHD 5 mm CPQCI 1H-
PULPROG zg30
TD 65536
SOLVENT DMSO
NS 32
DS 2
SWH 17006.803 Hz
FIDRES 0.259503 Hz
AQ 1.9267584 sec
RG 10.55
DW 29.400 usec
DE 10.00 usec
TE 298.0 K
D1 1.00000000 sec
TD0 1

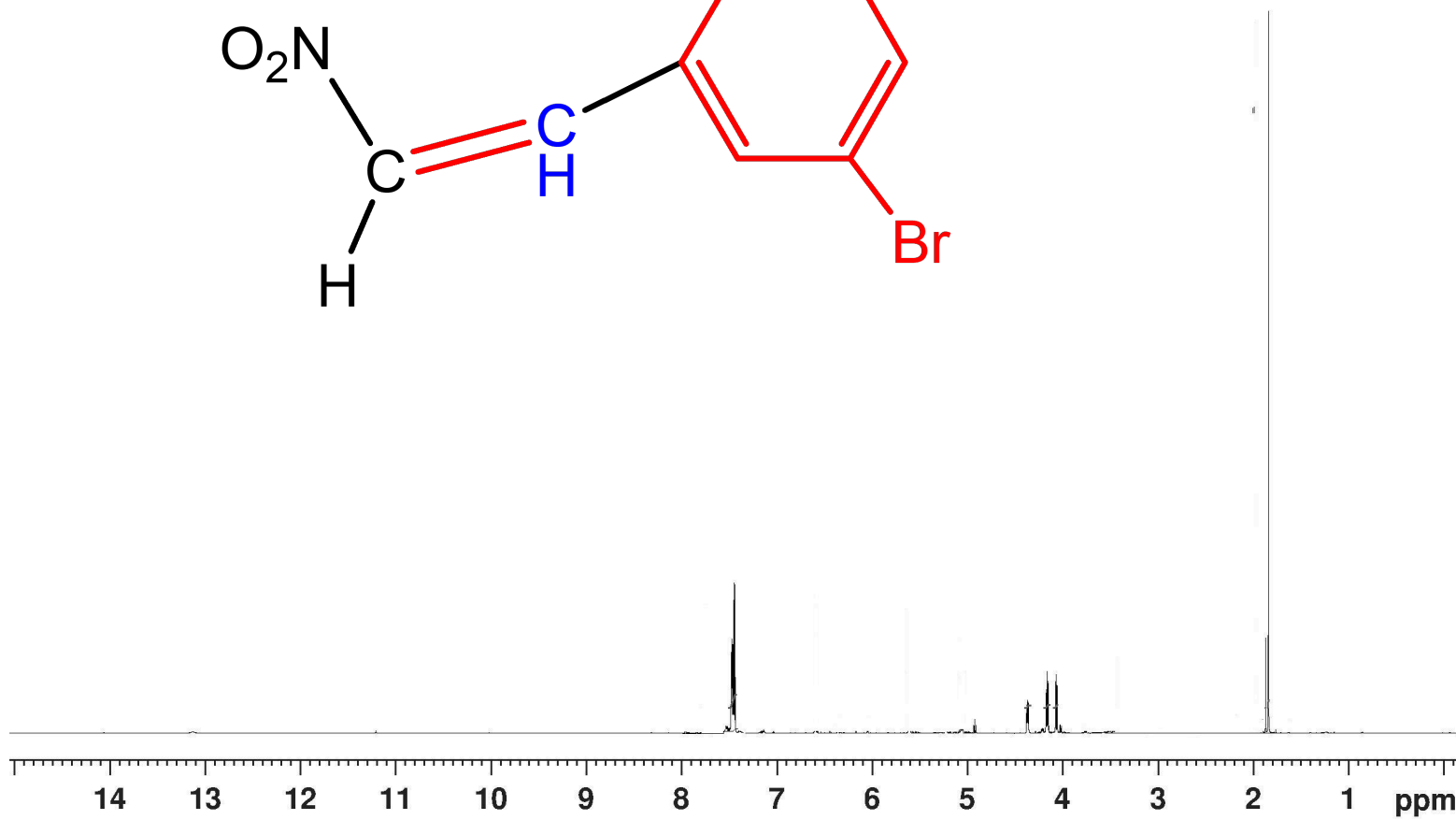
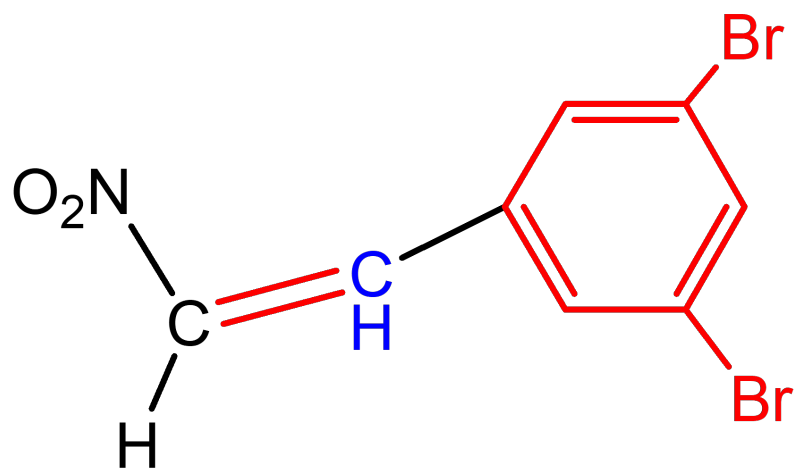
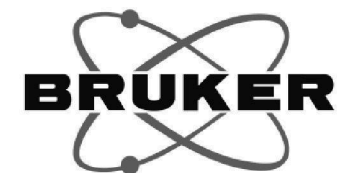
===== CHANNEL f1 =====

SFO1 850.1552500 MHz
NUC1 1H
P1 8.00 usec
PLW1 15.30000019 W

F2 - Processing parameters

SI 65536
SF 850.1500000 MHz
WDW EM
SSB 0
LB 0.30 Hz
GB 0
PC 2.00





Current Data Parameters

NAME MAJDA B
EXPNO 50
PROCNO 1

F2 - Acquisition Parameters

Date_ 10.14
Time spect
INSTRUM 5 mm CPQCI 1H-
PROBHD zg30
PULPROG 65536
TD DMSO
SOLVENT 32
NS 2
DS 17006.803 Hz
SWH 0.259503 Hz
FIDRES 1.9267584 sec
AQ 10.55
RG 29.400 usec
DW 10.00 usec
DE 298.0 K
TE 1.0000000 sec
D1 1
TD0

===== CHANNEL f1 =====
SFO1 850.1552500 MHz
NUC1 1H
P1 8.00 usec
PLW1 15.30000019 W

F2 - Processing parameters
SI 65536
SF 850.1500000 MHz
WDW EM
SSB 0
LB 0.30 Hz
GB 0
PC 2.00

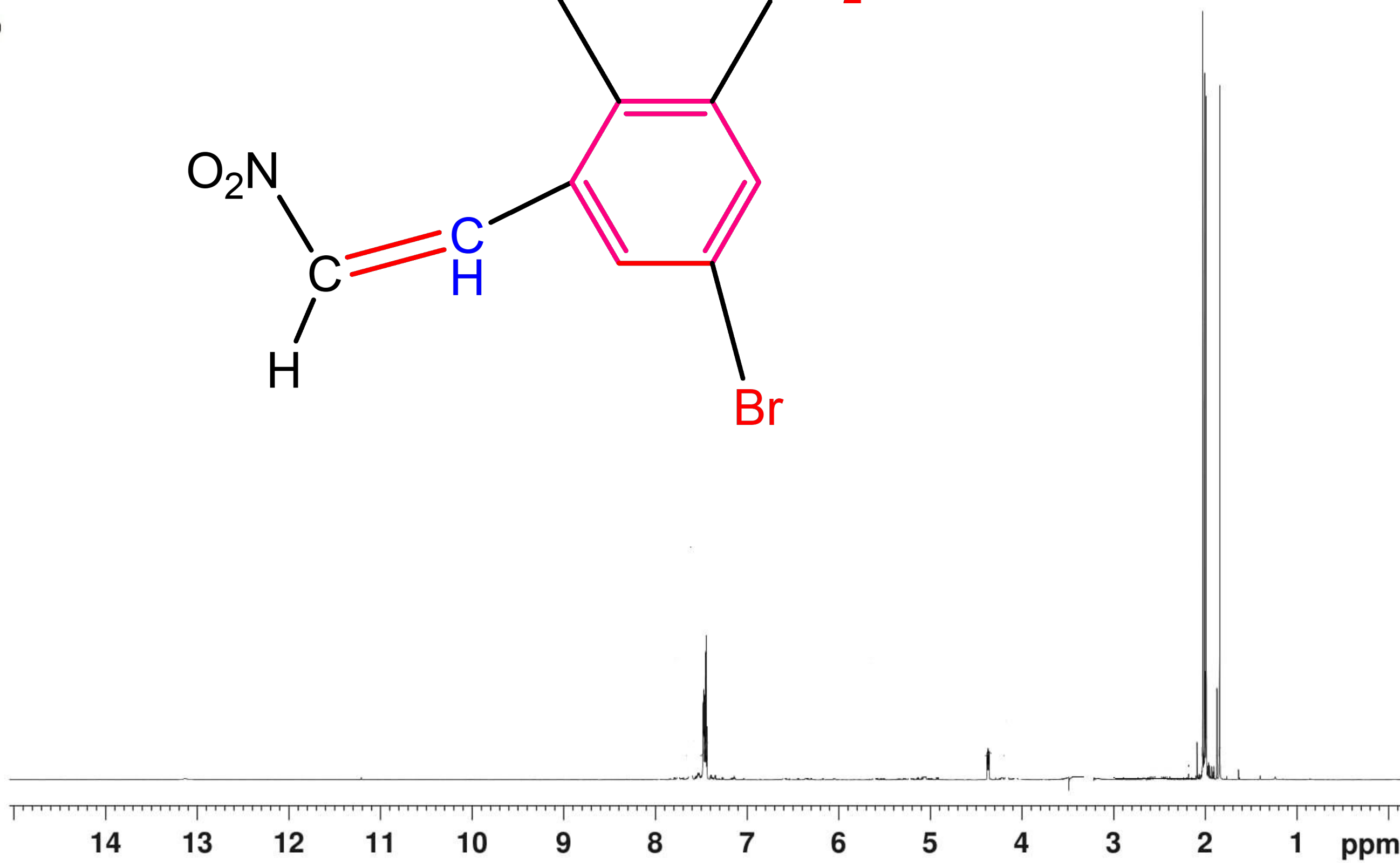
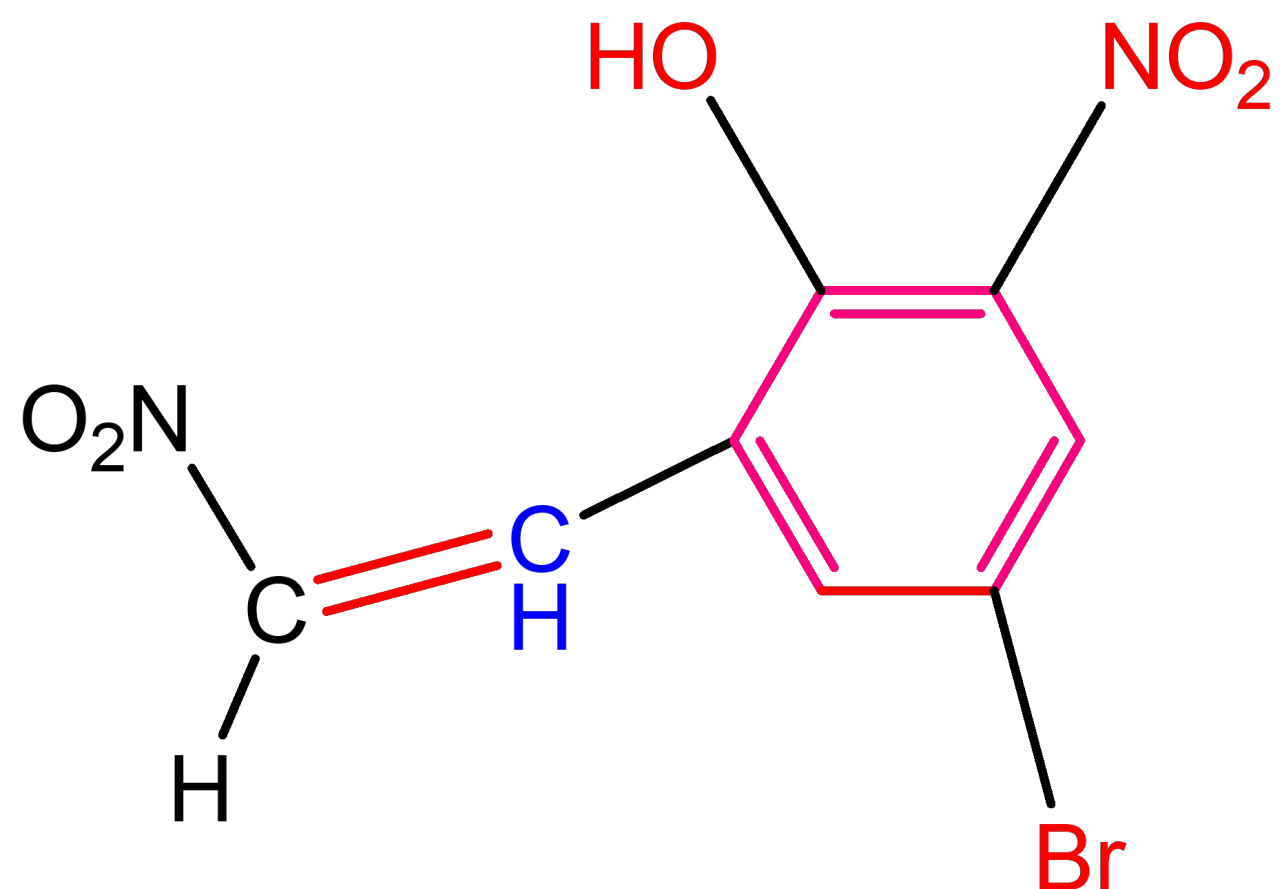


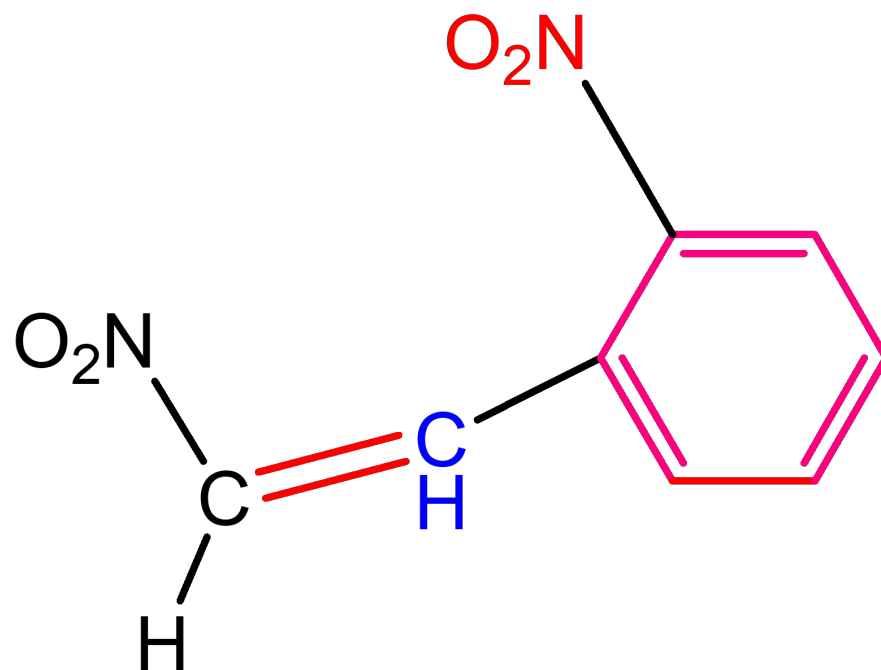
Current Data Parameters
NAME MAJDA C
EXPNO 50
PROCNO 1

F2 - Acquisition Parameters
Date_ 20160126
Time 10.14
INSTRUM spect
PROBHD 5 mm CPQCI 1H-
PULPROG zg30
TD 65536
SOLVENT DMSO
NS 32
DS 2
SWH 17006.803 Hz
FIDRES 0.259503 Hz
AQ 1.9267584 sec
RG 10.55
DW 29.400 usec
DE 10.00 usec
TE 298.0 K
D1 1.00000000 sec
TD0 1

===== CHANNEL f1 =====
SFO1 850.1552500 MHz
NUC1 1H
P1 8.00 usec
PLW1 15.30000019 W

F2 - Processing parameters
SI 65536
SF 850.1500000 MHz
WDW EM
SSB 0
LB 0.30 Hz
GB 0
PC 2.00





Current Data Parameters

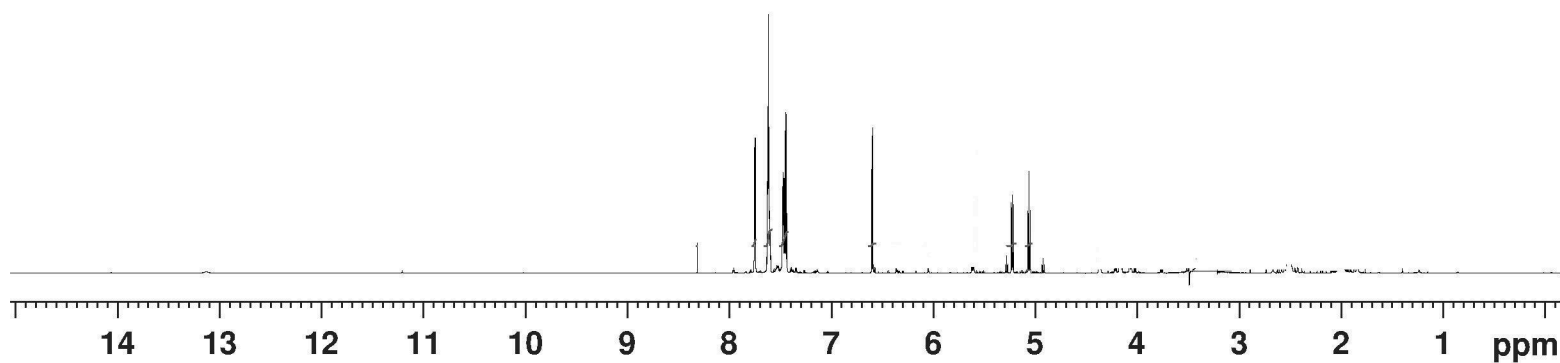
NAME MAJDA D
EXPNO 50
PROCNO 1

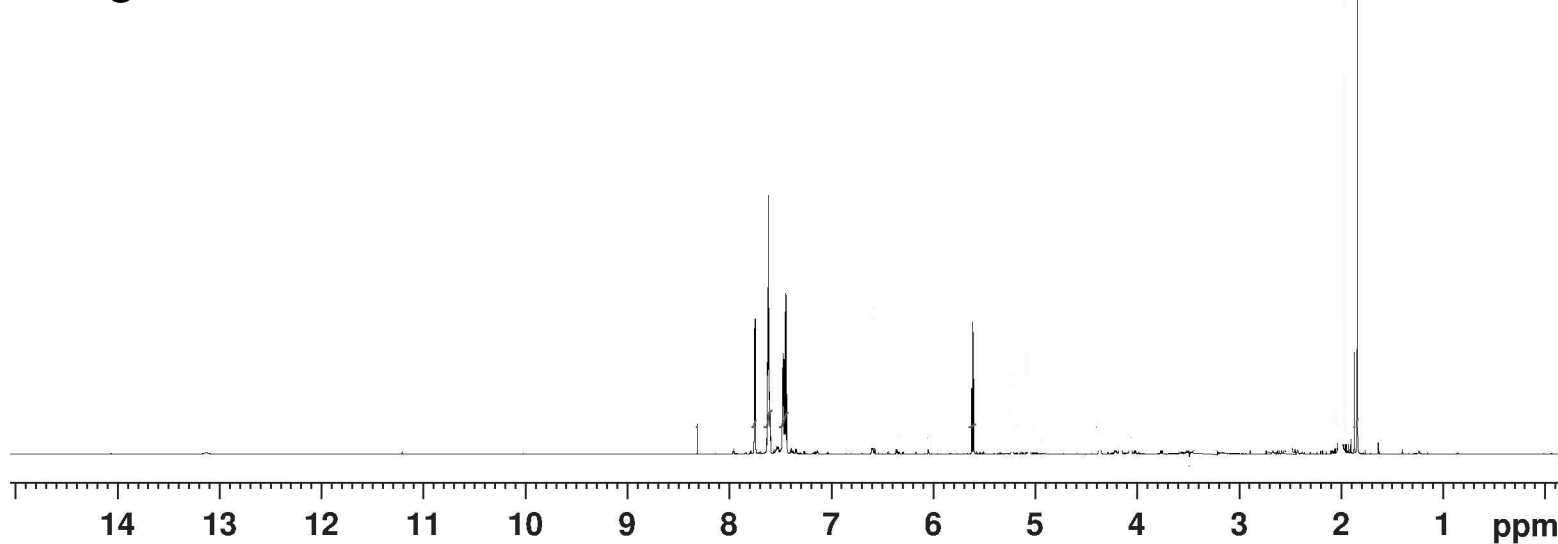
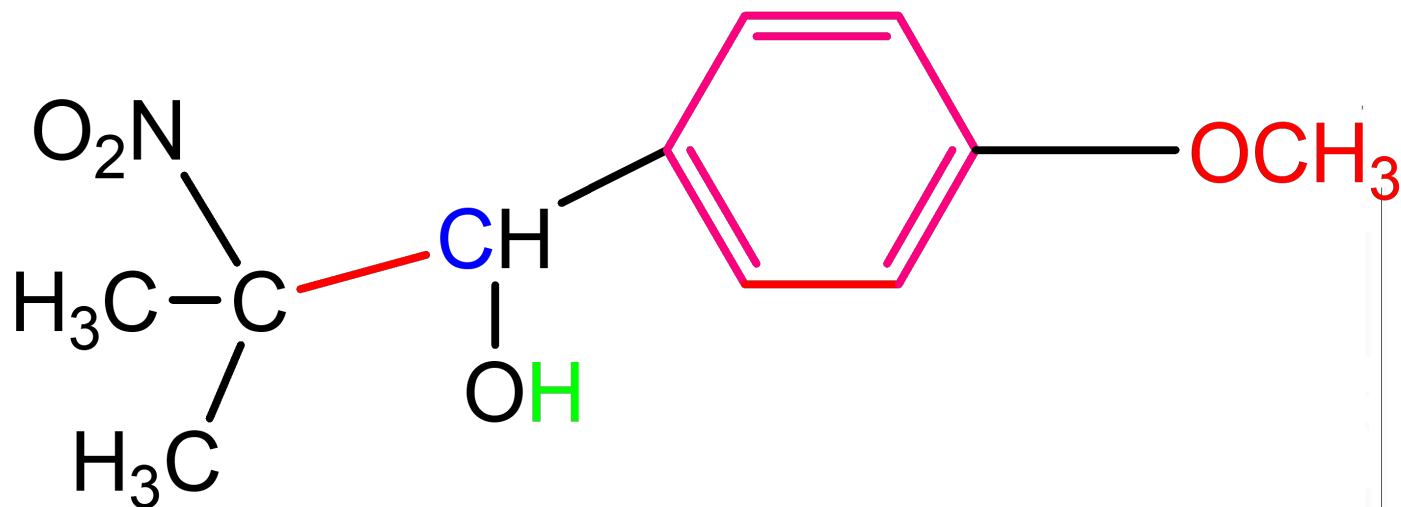
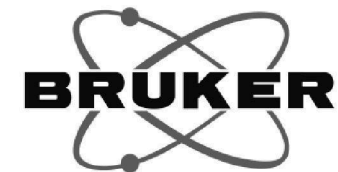
F2 - Acquisition Parameters

Date_
Time 10.14
INSTRUM spect
PROBHD 5 mm CPQCI 1H-
PULPROG zg30
TD 65536
SOLVENT DMSO
NS 32
DS 2
SWH 17006.803 Hz
FIDRES 0.259503 Hz
AQ 1.9267584 sec
RG 10.55
DW 29.400 usec
DE 10.00 usec
TE 298.0 K
D1 1.00000000 sec
TD0 1

===== CHANNEL f1 =====
SFO1 850.1552500 MHz
NUC1 1H
P1 8.00 usec
PLW1 15.30000019 W

F2 - Processing parameters
SI 65536
SF 850.1500000 MHz
WDW EM
SSB 0
LB 0.30 Hz
GB 0
PC 2.00





Current Data Parameters

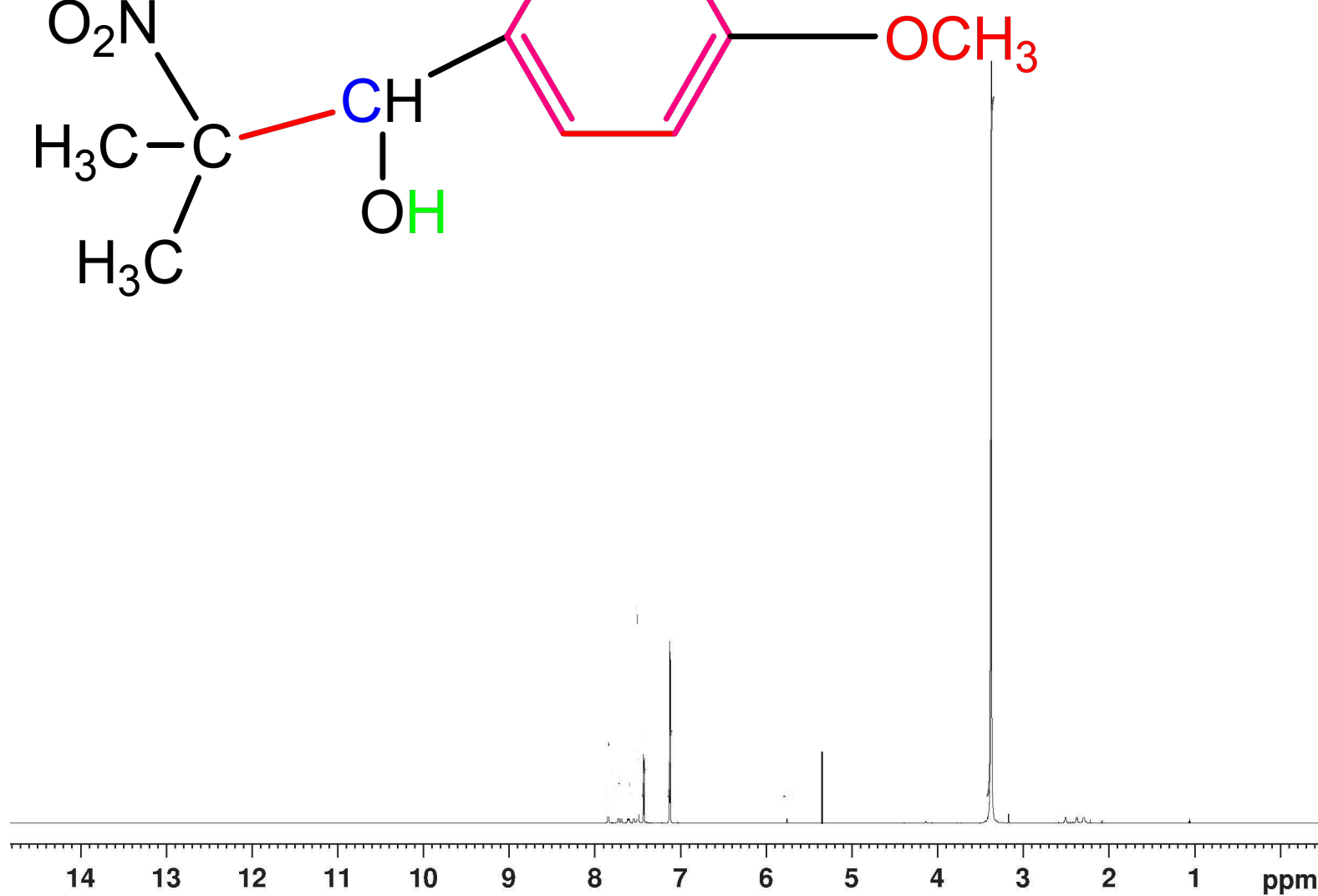
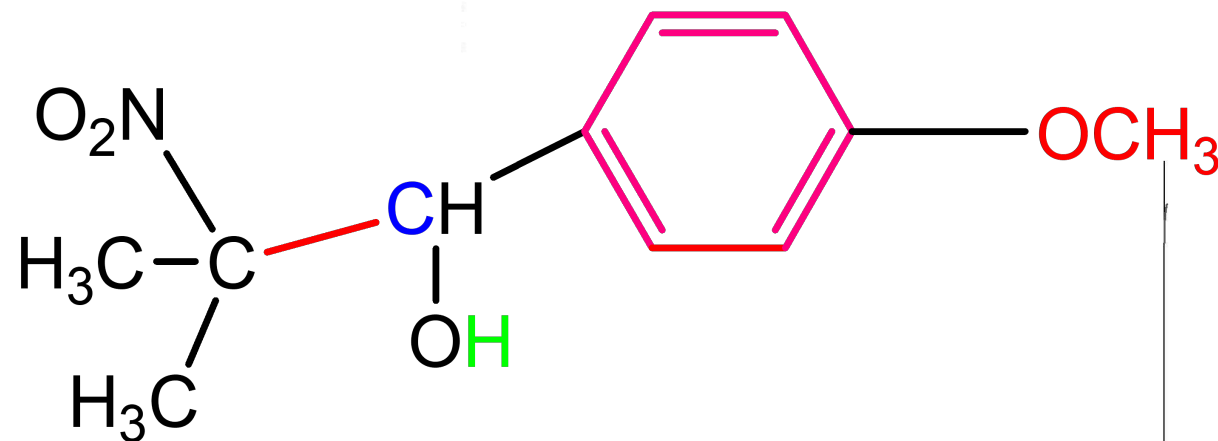
NAME MAJDA E
EXPNO 50
PROCNO 1

F2 - Acquisition Parameters

Date_
Time 10.14
INSTRUM spect
PROBHD 5 mm CPQCI 1H-
PULPROG zg30
TD 65536
SOLVENT DMSO
NS 32
DS 2
SWH 17006.803 Hz
FIDRES 0.259503 Hz
AQ 1.9267584 sec
RG 10.55
DW 29.400 usec
DE 10.00 usec
TE 298.0 K
D1 1.00000000 sec
TD0 1

===== CHANNEL f1 =====
SFO1 850.1552500 MHz
NUC1 1H
P1 8.00 usec
PLW1 15.30000019 W

F2 - Processing parameters
SI 65536
SF 850.1500000 MHz
WDW EM
SSB 0
LB 0.30 Hz
GB 0
PC 2.00



Current Data Parameters

NAME MAJDA F
EXPNO 40
PROCNO 1

F2 - Acquisition Parameters

Date_ -
Time 10.09
INSTRUM spect
PROBHD 5 mm CPQCI 1H-
PULPROG zg30
TD 65536
SOLVENT DMSO
NS 32
DS 2
SWH 17006.803 Hz
FIDRES 0.259503 Hz
AQ 1.9267584 sec
RG 10.55
DW 29.400 usec
DE 10.00 usec
TE 298.0 K
D1 1.00000000 sec
TD0 1

==== CHANNEL f1 =====
SFO1 850.1552500 MHz
NUC1 1H
P1 8.00 usec
PLW1 15.30000019 W

F2 - Processing parameters

SI 65536
SF 850.1500000 MHz
WDW EM
SSE 0
LB 0.30 Hz
GB 0
PC 2.00