

Supplementary Materials:

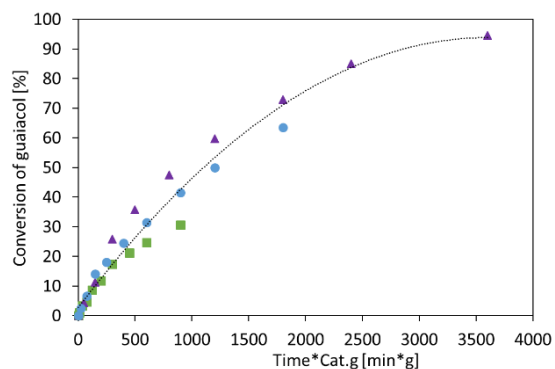


Figure S1. Conversion of guaiacol at 1:2, 1:1, and 2:1 feed:catalyst ratio.

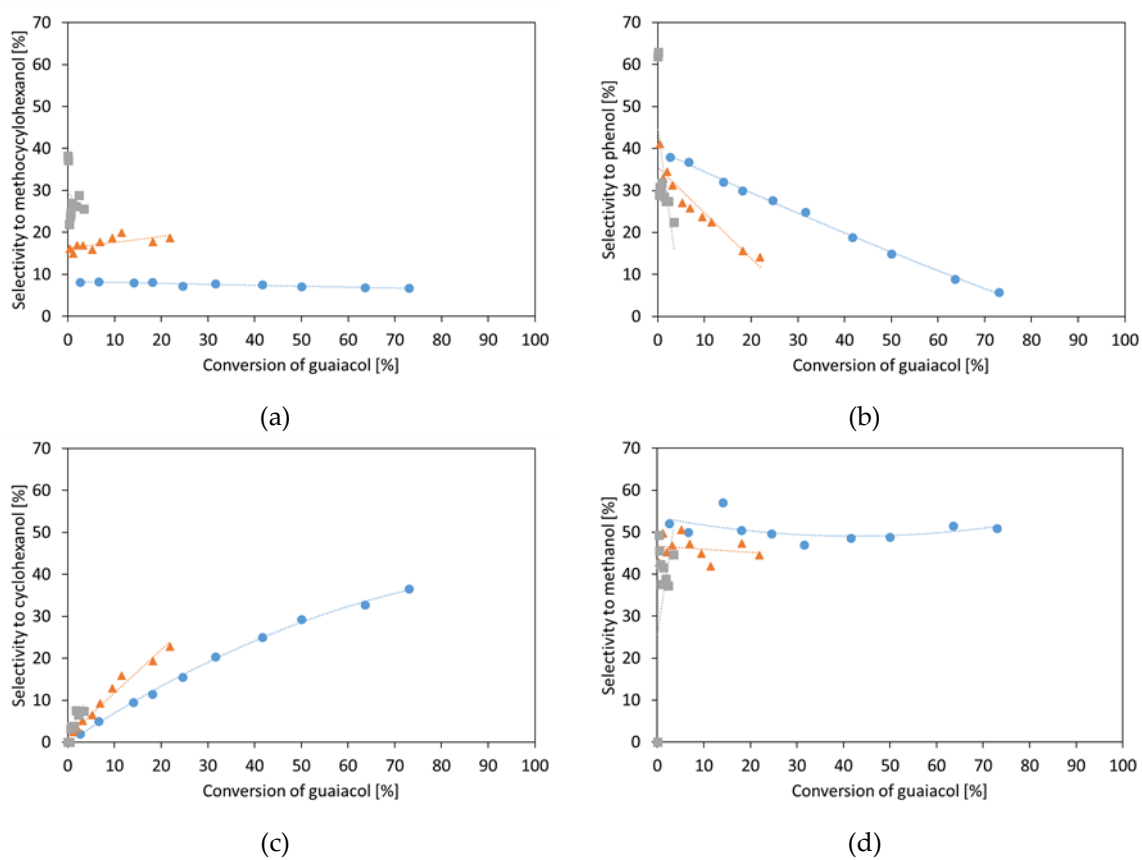


Figure S2. Selectivity to (a) methoxycyclohexanol, (b) phenol, (c) cyclohexanol, and (d) methanol at 30, 50, and 70 °C for pure guaiacol.