

Supplementary Materials

Fabrication of Au nanoparticles decorated MoS₂ nano-slices as efficient electrocatalysts used for electrochemical detection of dopamine

Huaiyin Chen ¹, Huaijin Chen ² and Ruoyu Hong ^{1,*}

¹ College of Chemical Engineering, Fuzhou University, Fuzhou 350116, China; chenhuaiyin@126.com (H.C.)

² State Grid Jining Power Supply Company, Jining 272000, China; chjin1990@126.com

* Correspondence: rhong@fzu.edu.cn;

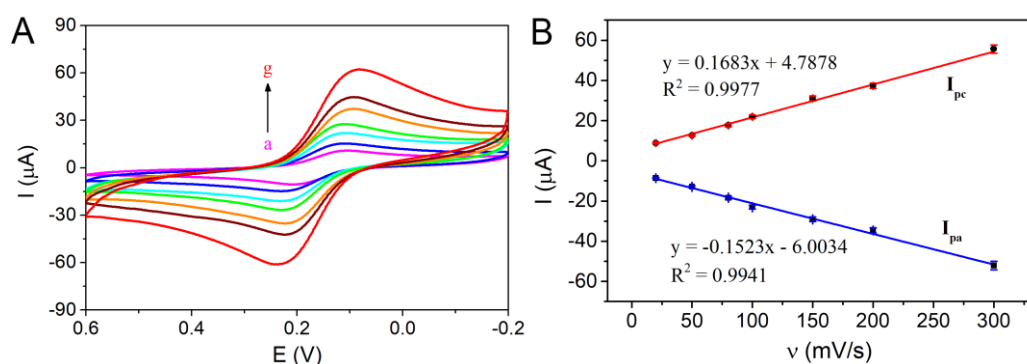


Figure S1. (A) the CV curves of MoS₂/Au/CPE in 0.1M PBS (pH 7.0) containing 0.2 mM DA at a series of scan rate (from a to g: 20, 30, 50, 80, 100, 150, 200, 300 mV/s), (B) the linear relationships of I_{pa} and I_{pc} versus the scan rate.

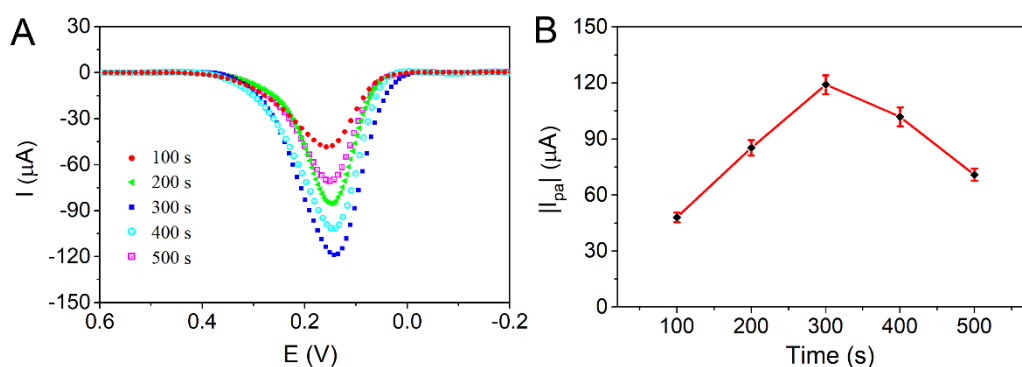


Figure S2. (A) the DPV curves of MoS₂/Au/CPE prepared under different electrodeposition time of AuNPs in 0.1M PBS (pH 7.0) containing 1.0 mM DA, (B) the corresponding variation of I_{pa} value with the increase of the electrodeposition time.

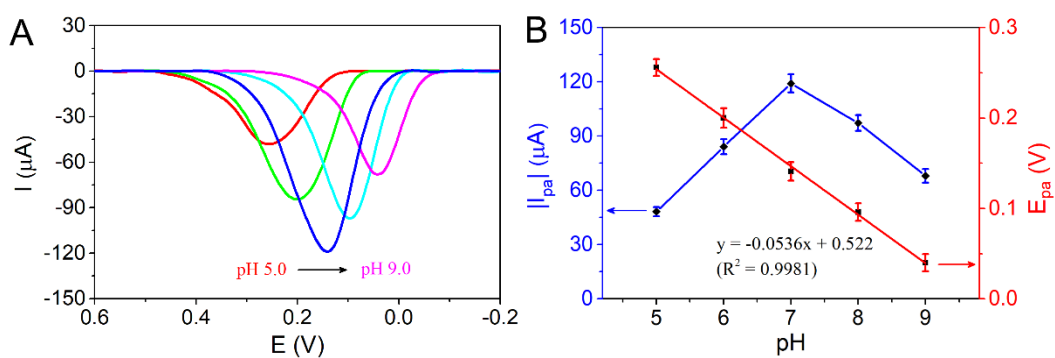


Figure S3. (A) the DPV curves of MoS₂/Au/CPE in 0.1M PBS (pH 7.0) containing 1.0 mM DA at different pH, (B) the corresponding variation of I_{pa} and E_{pa} values with the change of pH.

Table S1. Detection of 50 μM DA in the presence of the common substance.

Interferent	Added (mM)	I _{pa} value (μA)	Relative error (%)
/	/	8.035	/
KNO ₃	10	8.108	0.91
NaCl	10	7.935	-1.24
CaCl ₂	10	8.282	3.07
MgSO ₄	10	8.327	3.63
Glucose	2	7.706	-4.09
Citric acid	2	8.302	3.32

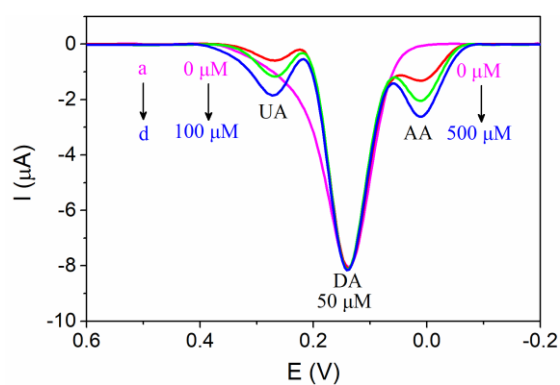


Figure S4. The DPV curves of MoS₂/Au/CPE in 0.1M PBS (pH 7.0) containing 50 μM DA and (a) 0 μM AA + 0 μM UA, (b) 100 μM AA + 20 μM UA, (c) 300 μM AA + 60 μM UA and (d) 500 μM AA + 100 μM UA.

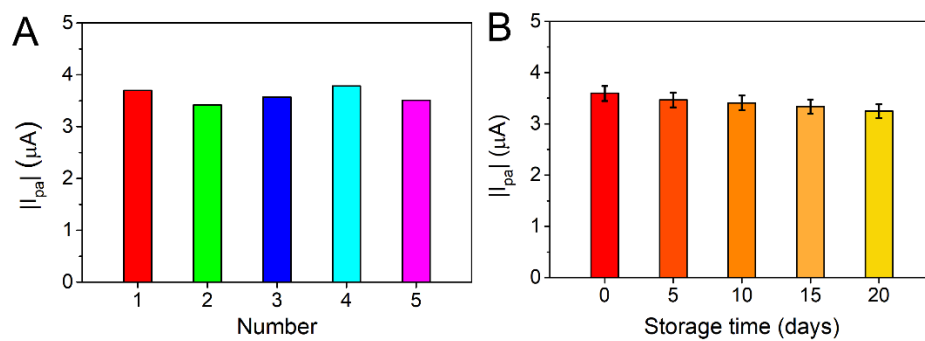


Figure S5. (A) the I_{pa} values of DPV measurements recorded in 0.1M PBS (pH 7.0) containing 10 μM DA at five independent $MoS_2/Au/CPEs$, (B) the I_{pa} values of DPV measurements in 0.1M PBS (pH 7.0) containing 10 μM DA at $MoS_2/Au/CPE$ after storage for different periods of time.