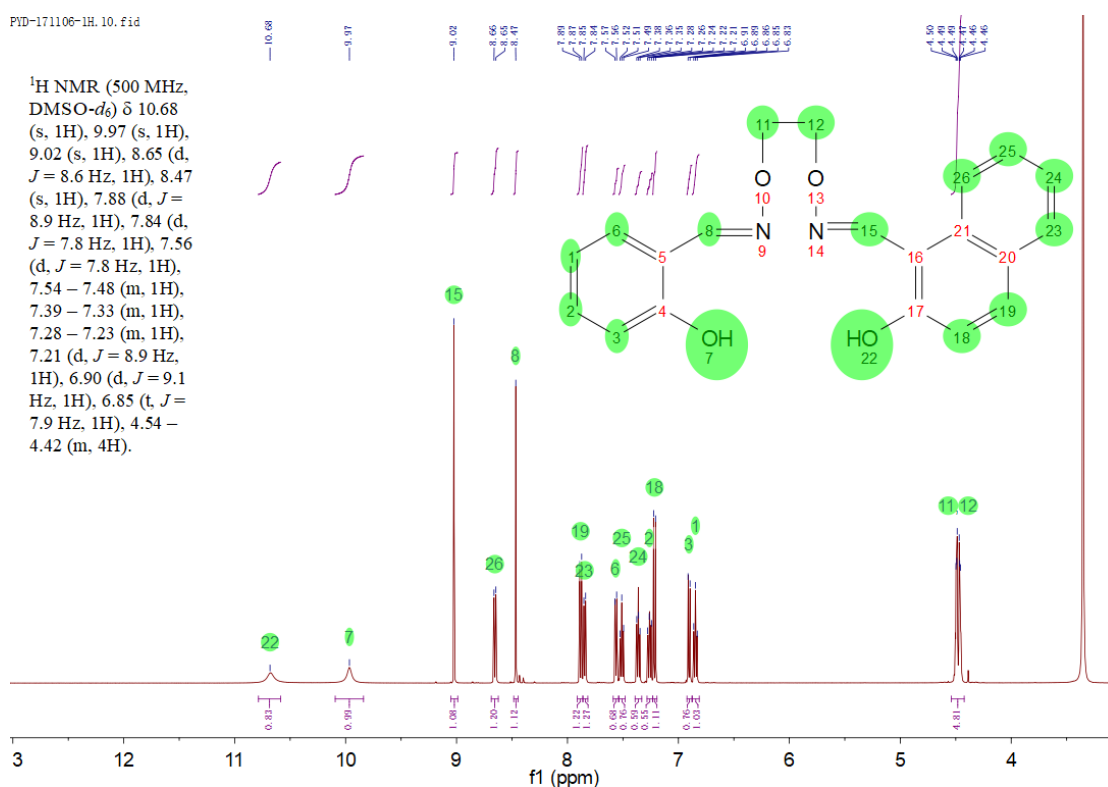


Insight into Rare Structurally Characterized Homotrimeric Cu^{II} Non-Symmetric Salamo-Based Complex

Yun-Dong Peng, Ruo-Yu Li, Peng Li and Yin-Xia Sun *

School of Chemical and Biological Engineering, Lanzhou Jiaotong University, Lanzhou, 730070, China; peng-yundong6@126.com (Y.-D.P.); 0219577@stu.lzjtu.edu.cn (R.-Y.L.); 0219532@stu.lzjtu.edu.cn (P.L.)

* Correspondence: sunyinxia@mail.lzjtu.cn (Y-X.S.), Tel. +86-931-4938755



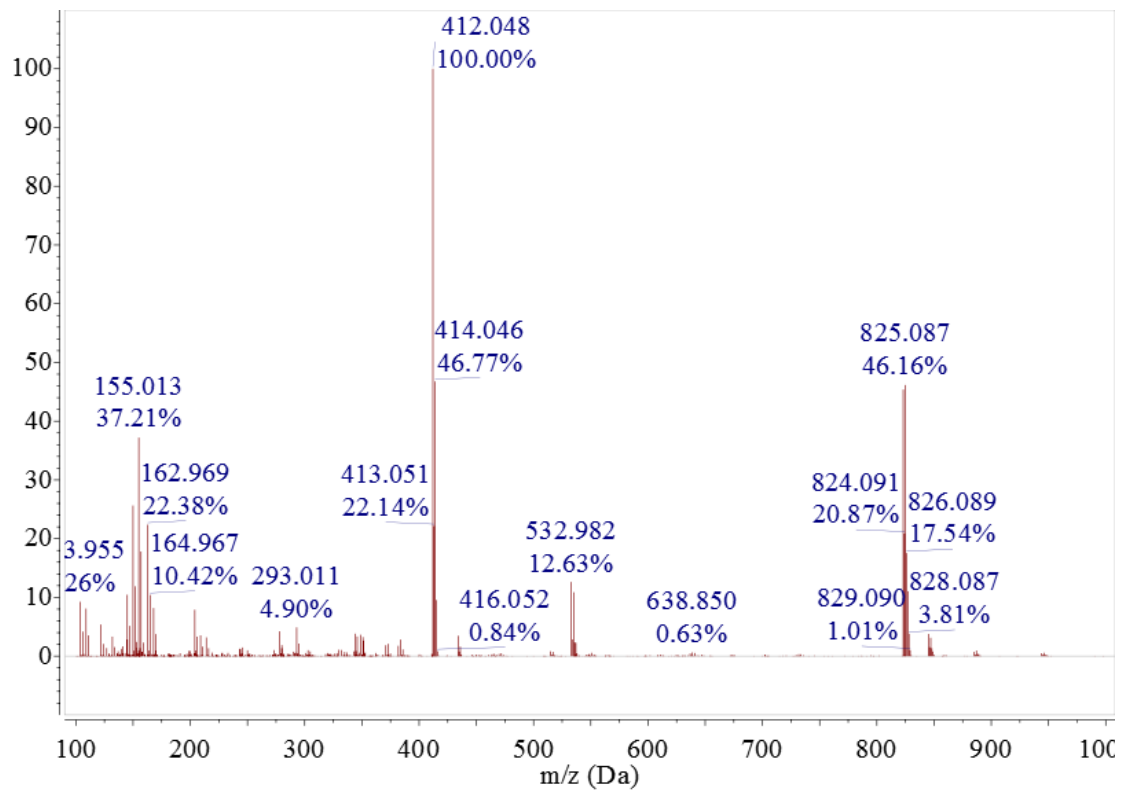


Figure 2. Mass spectrum of the Cu^{II} complex.