

Supplementary Information

Morphotropic Phase Boundary Region 0.7BiFeO₃-0.3BaTiO₃ Ceramics Exploration Under the Influence of the Incorporated Sn-Ions for Piezo/Ferro Applications

Ahmad Hussain¹, Nawishta Jabeen^{2,*}, Imtiaz Ahmad Khan³, Muhammad Usman Khan⁴, Muhammad Adnan Qaiser⁵, Zaki I. Zaki⁶, and Mohamed E Khalifa⁶

¹Department of Physics, The University of Lahore, Sargodha Campus, Sargodha 40100, Pakistan

²Department of Physics, Fatima Jinnah Women University, Rawalpindi 46000, Pakistan

³Shenzhen Key Laboratory of Flexible Printed Electronics Technology, Harbin Institute of Technology, Shenzhen 518055, China

⁴National Key Laboratory of Tunable Laser Technology, Harbin Institute of Technology, Harbin 150080, China

⁵School of Materials Science & Engineering, Jiangsu University, Zhenjiang

⁶Department of Chemistry, College of Science, Taif University, P.O. Box 11099, Taif, 21944, Saudi Arabia

* Correspondence: Author: Dr. Nawishta Jabeen; nawishta.jabeen@fjwu.edu.pk; +92-313-6982266

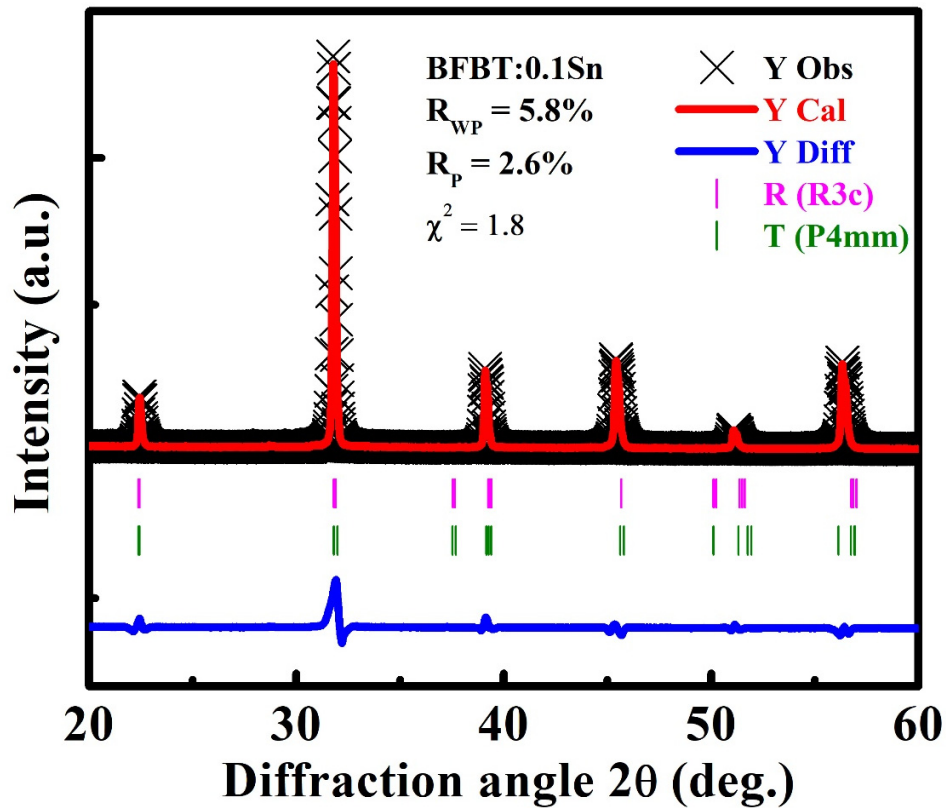


Figure S1: Simulation of the XRD analysis for the BFBT:0.1Sn ceramic.

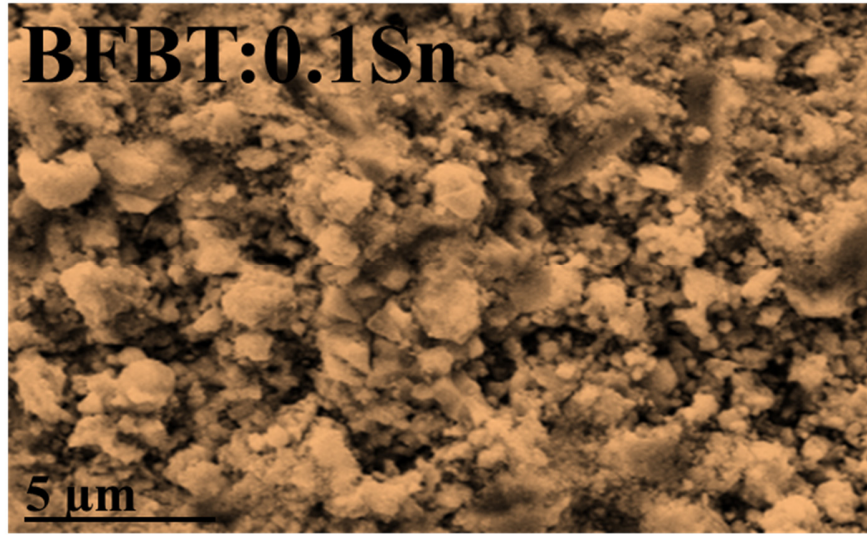


Figure S2: SEM image of the BFBT:0.1Sn ceramic.

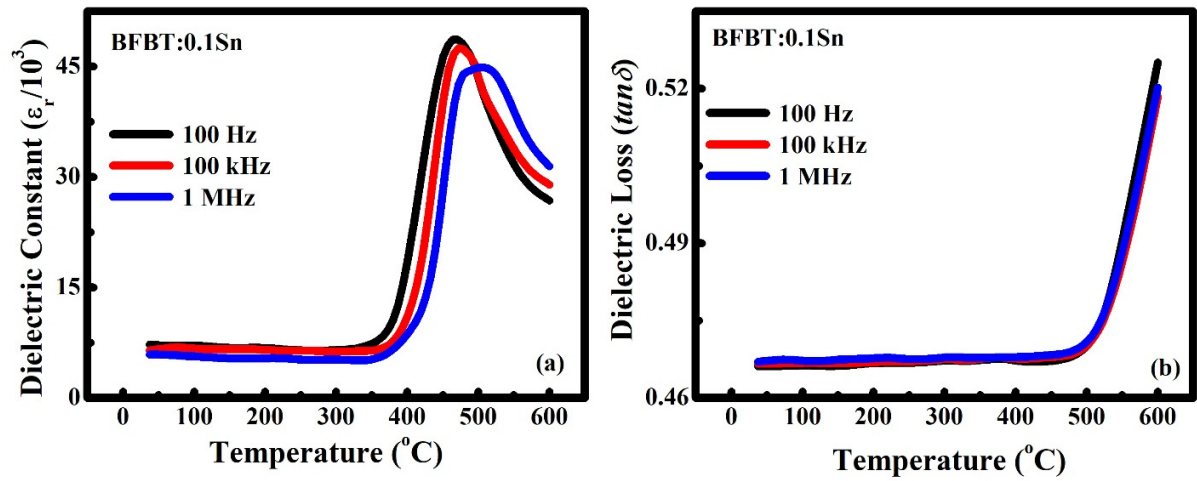


Figure S3: (a) Dielectric constant (ϵ_r) and (b) dielectric loss ($\tan\delta$) as a function of the temperature for the BFBT:0.1Sn ceramic.