

Supplementary Materials

Refolding, Characterization, and Preliminary X-ray Crystallographic Studies on the *Campylobacter concisus* Plasmid-Encoded Secreted Protein Csep1^P Associated with Crohn's Disease

Mohammad Mizanur Rahman ¹, Bradley Goff ², Li Zhang ^{3,*} and Anna Roujeinikova ^{1,2,*}

¹ Infection and Immunity Program, Monash Biomedicine Discovery Institute, Department of Microbiology, Monash University, Clayton, Victoria 3800, Australia; mohammad.mizanur.rahman@monash.edu

² Department of Biochemistry and Molecular Biology, Monash University, Clayton, Victoria 3800, Australia; bgof1@student.monash.edu

³ School of Biotechnology and Biomolecular Sciences, University of New South Wales, Sydney, NSW 2052, Australia

* Correspondence: anna.roujeinikova@monash.edu (A.R.); l.zhang@unsw.edu.au (L.Z.); Tel.: +61-39-902-9194



Figure S1. Csep1P sequence coverage by the tryptic digest peptides identified in the sample using tandem mass spectrometry analysis.

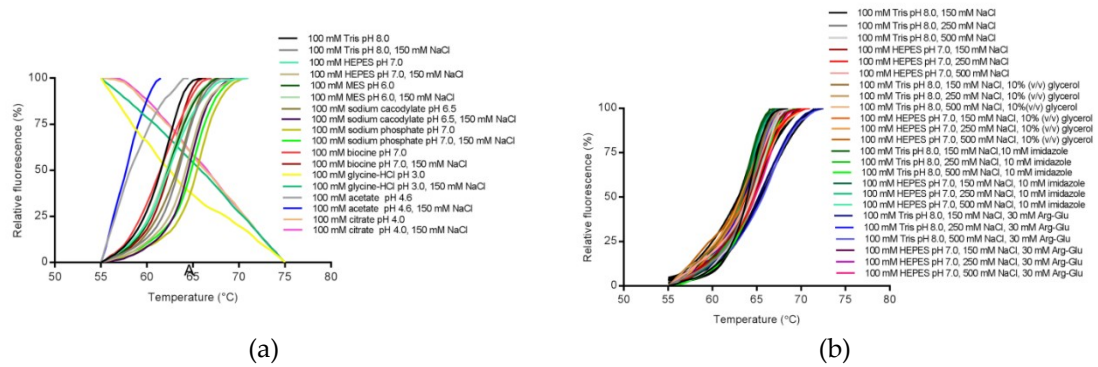


Figure S2. Normalised thermal unfolding (melting) curves of Csep1P in different buffers, measured by following changes in the fluorescence of SYPRO Orange. (a) Effect of pH and presence or absence of 150 mM NaCl; (b) effect of additives (glycerol, imidazole, or Arg-Glu mix) and increasing NaCl concentration.

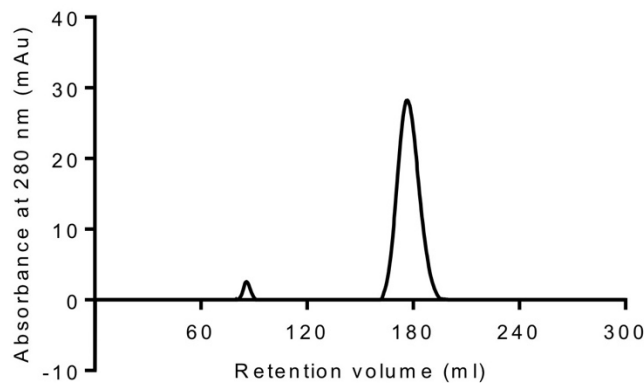


Figure S3. Gel filtration chromatogram. The minor peak at the void volume (~85 ml) corresponds to a small amount of non-specific, large aggregates.