

Supporting information

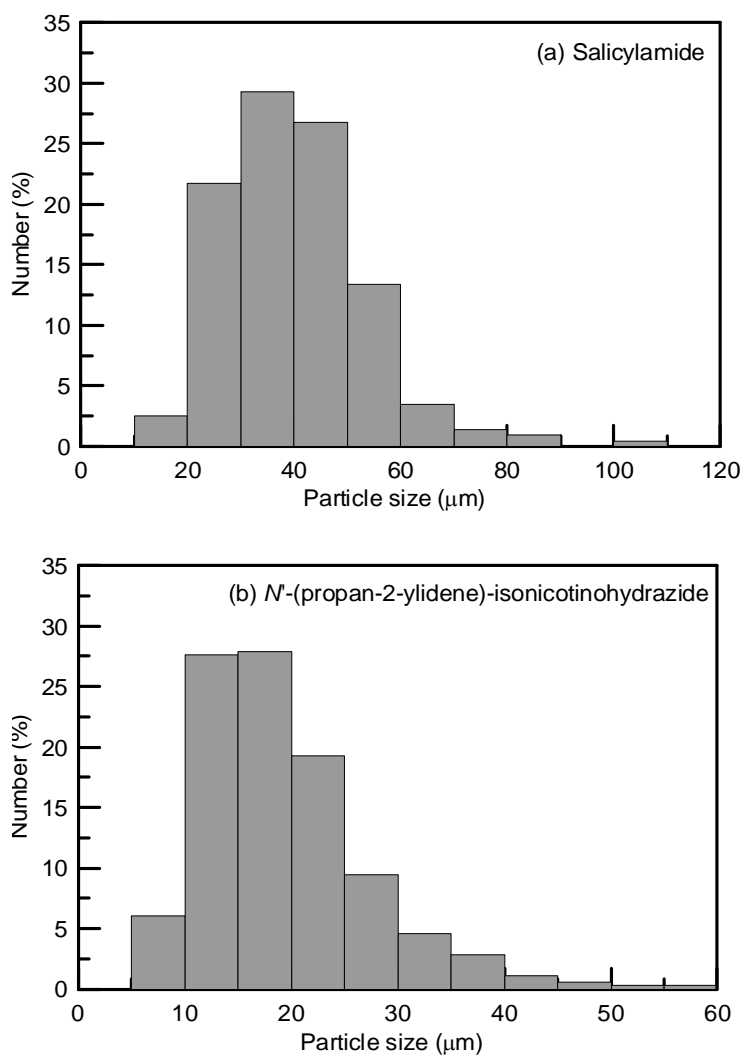


Figure S1 Particle size distribution of (a) sonocrystallized salicylamide crystals from Exp. 3 (b) sonocrystallized *N'*-(propan-2-ylidene)-isonicotinohydrazide crystals from Exp. 14

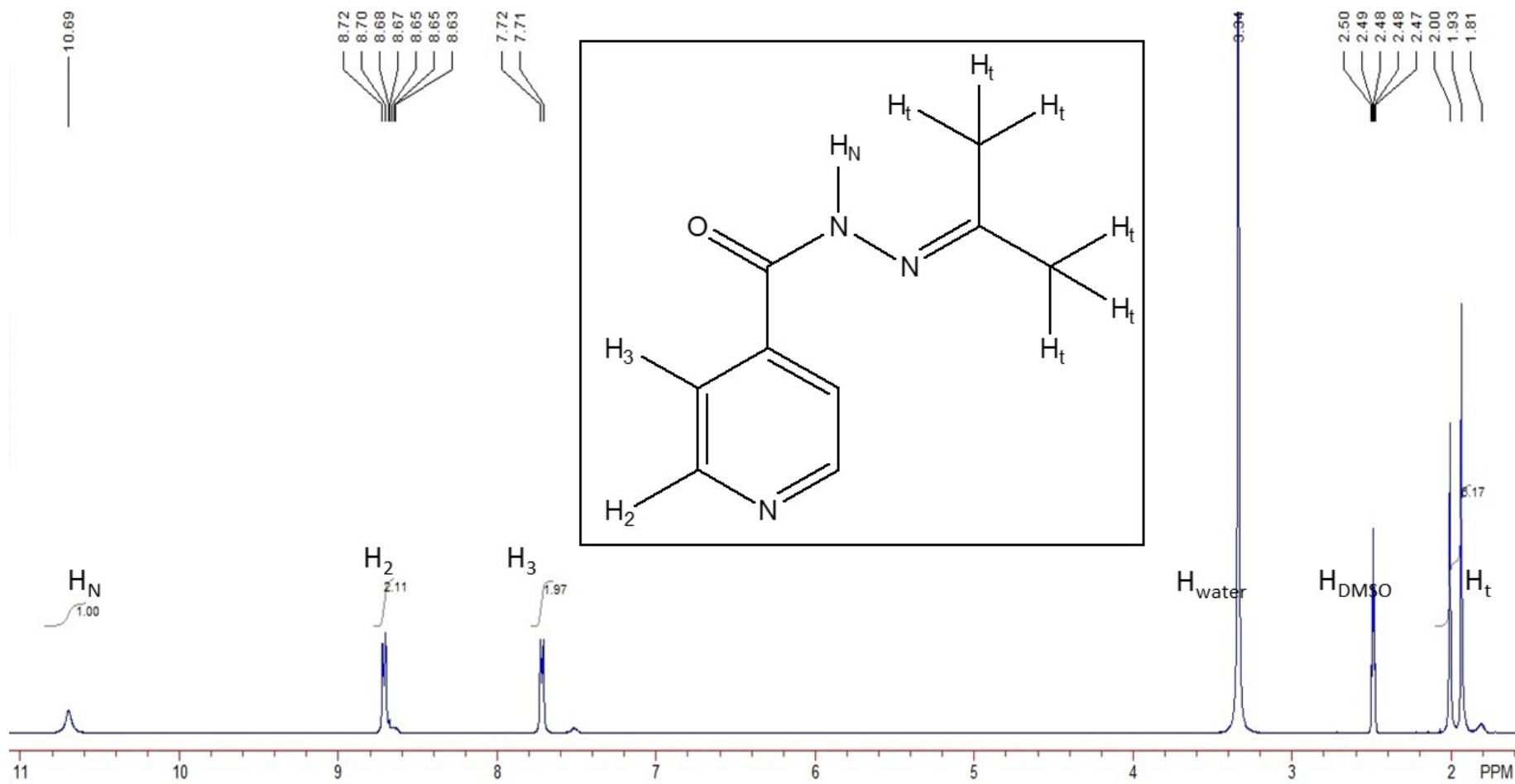


Figure S2 NMR results of the synthesized *N'*-(propan-2-ylidene)-isonicotinohydrazide crystals

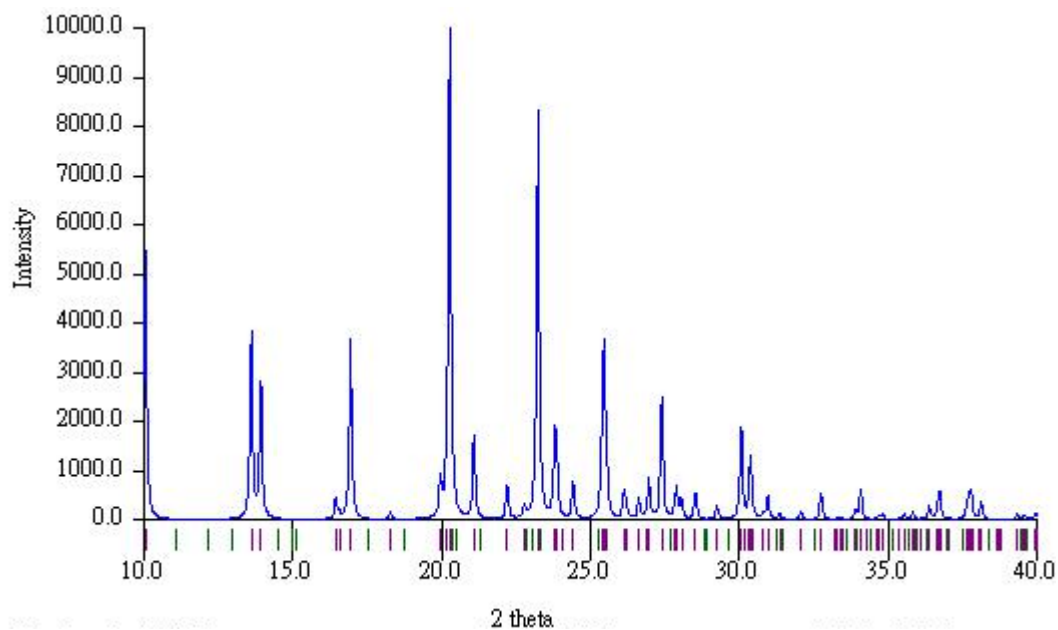


Figure S3 Calculated PXRD pattern of *N'*-(propan-2-ylidene)-isonicotinohydrazide from The Cambridge Crystallographic Data Centre (CCDC number: 706025)

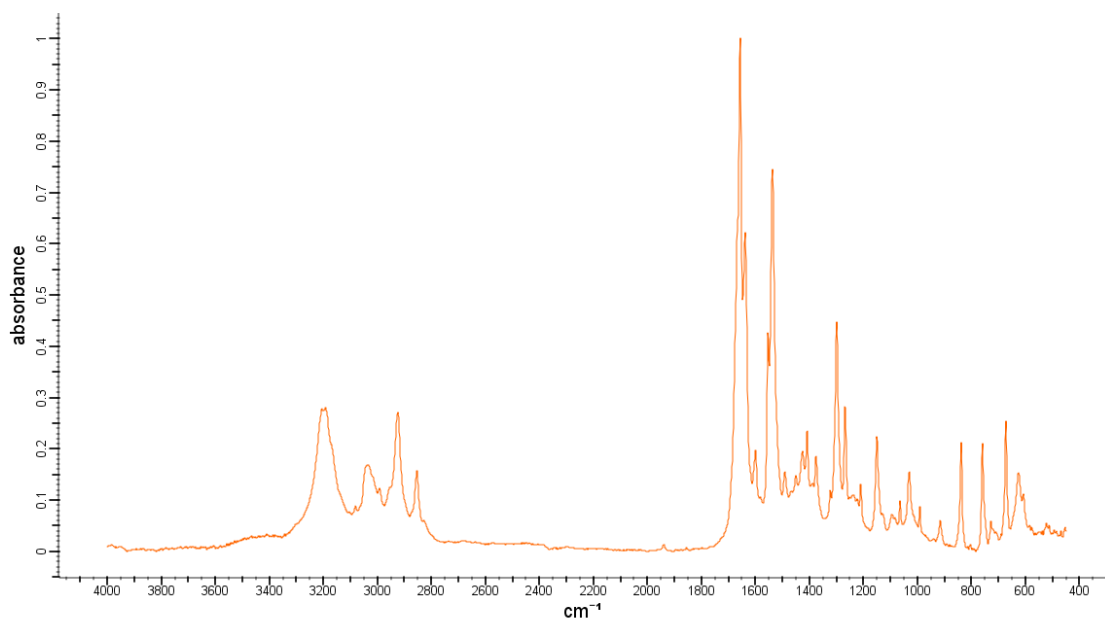


Figure S4 FTIR spectrum of *N'*-(propan-2-ylidene)-isonicotinohydrazide from SpectraBase database

Copyright © 1980, 1981-2018 Bio-Rad. All Rights Reserved.