

Supporting Information

Isomorphous Crystals Formed by the Similar Supramolecular Motifs in Sorafenib Hydrochloride and Regorafenib Hydrochloride Salts

Chi Uyen Phan ^{1,2}, Jie Shen ¹, Jiyong Liu ¹, Jianming Mao ¹, Xiurong Hu ^{1,*} and Guping Tang ^{1,*}

¹ Department of Chemistry, Zhejiang University, Hangzhou, 310028, People's Republic of China; pha3409@zju.edu.cn (C.U.P.), shenjie1003@zju.edu.cn (J.S.), liujy@zju.edu.cn (J.L.), 3150102050@zju.edu.cn (J.M.)

² Faculty of Chemical Technology – Environment, University of Technology and Education, The University of Danang, Danang, 550000, Socialist Republic of Vietnam;

* Correspondence: tangguping@zju.edu.cn (G.T.), huxiurong@zju.edu.cn (X.H.)

Received: 14 November 2019; Accepted: 04 December 2019; Published: 06 December 2019

Table 1. Crystallographic data for (I) and (II).

	(I)	(II)
Crystal size (mm)	0.30 × 0.21 × 0.13	0.45 × 0.30 × 0.14
Diffractometer	Bruker APEX-II CCD	Bruker APEX-II CCD
Absorption correction	Multi-scan	Multi-scan
T_{\min} , T_{\max}	0.682, 0.746	0.686, 0.749
Theta range for data collection	2.19 to 29.84	2.36 to 38.83
No. of measured, independent and observed [$I > 2\sigma(I)$] reflections	17905, 6337, 4621	33137, 16140, 9590
$(\sin \theta/\lambda)_{\max}$ (\AA^{-1})	0.705	0.960
No. of calculated cell parameter reflections	6823	9888
No. of parameters	299	312
H-atom treatment	H-atom parameters constrained	H atoms treated by a mixture of independent and constrained refinement
$\Delta\rho_{\max}$, $\Delta\rho_{\min}$ ($e \text{\AA}^{-3}$)	0.51, -0.36	0.48, -0.58

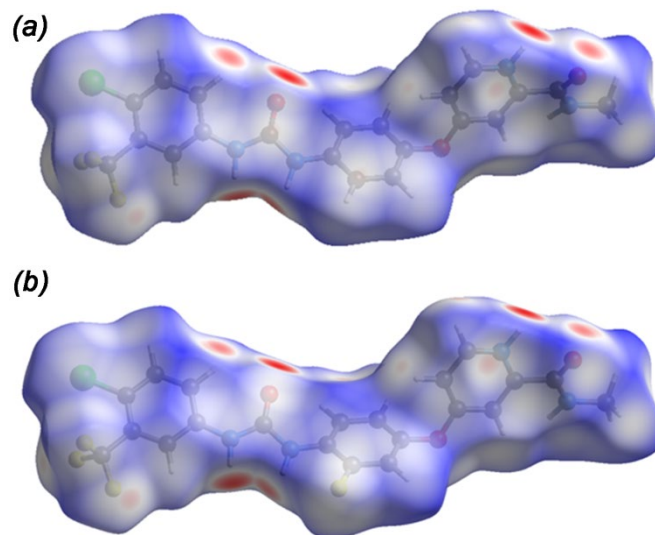


Figure 1. Hirshfeld surface mapped with d_{norm} (a) (I) and (b) (II).

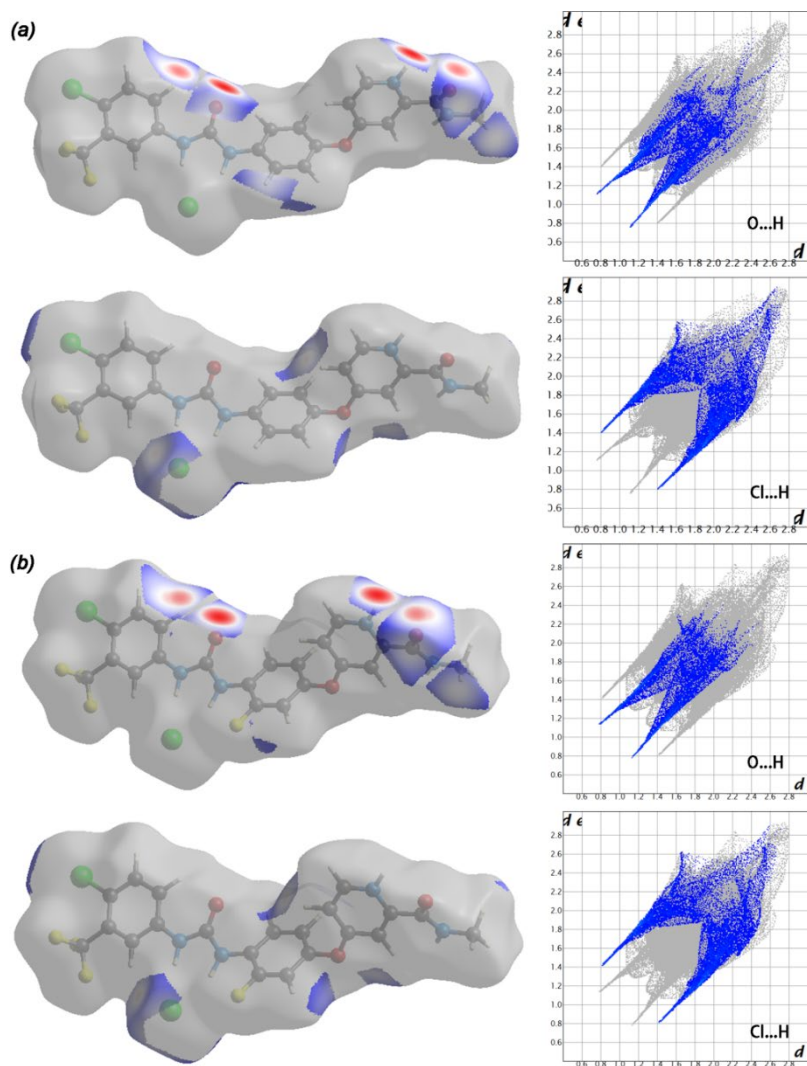


Figure 2. Decomposition of Hirshfeld surface mapped with d_{norm} and fingerprint plots of (a) (I) and (b) (II).

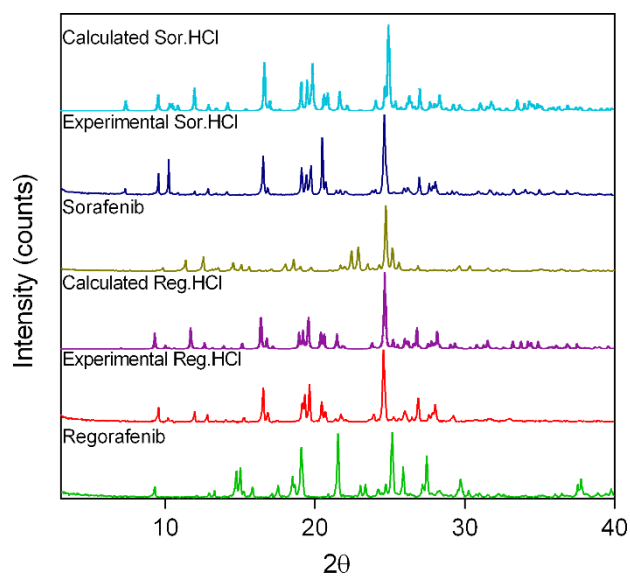


Figure 3. The overlay of experimental and calculated PXRD patterns of sorafenib, regorafenib, (I) and (II).

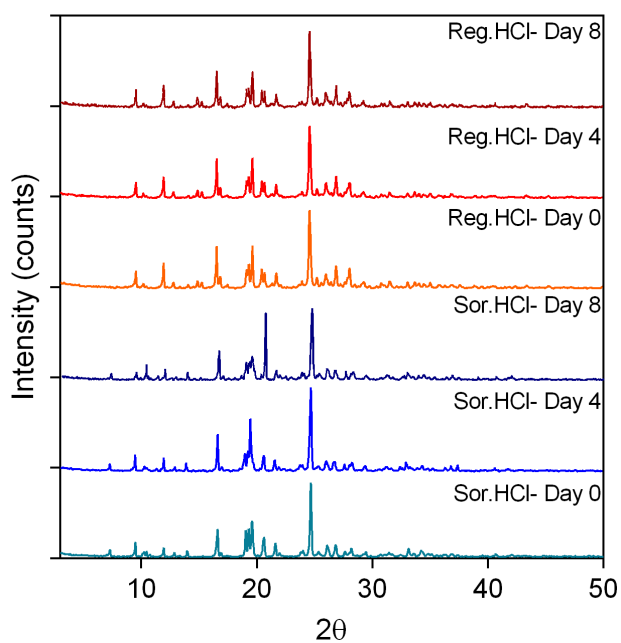


Figure 4. The overlay of PXRD patterns of (I) and (II) at Day 0, Day 4 and Day 8 under high humidity (92.5%RH) and 25 °C condition.

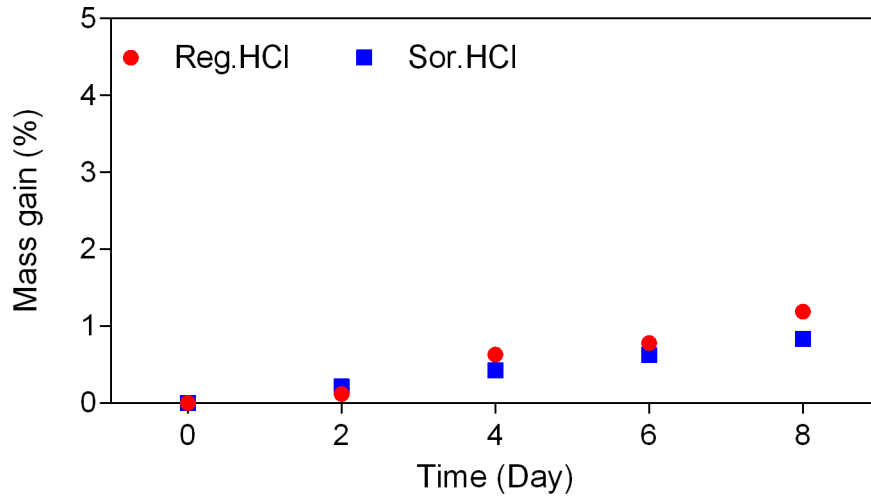


Figure 5. Mass gain measurements as a function of time, for (I) and (II) under high humidity (92.5%RH) and 25°C condition.