

Supplementary Materials

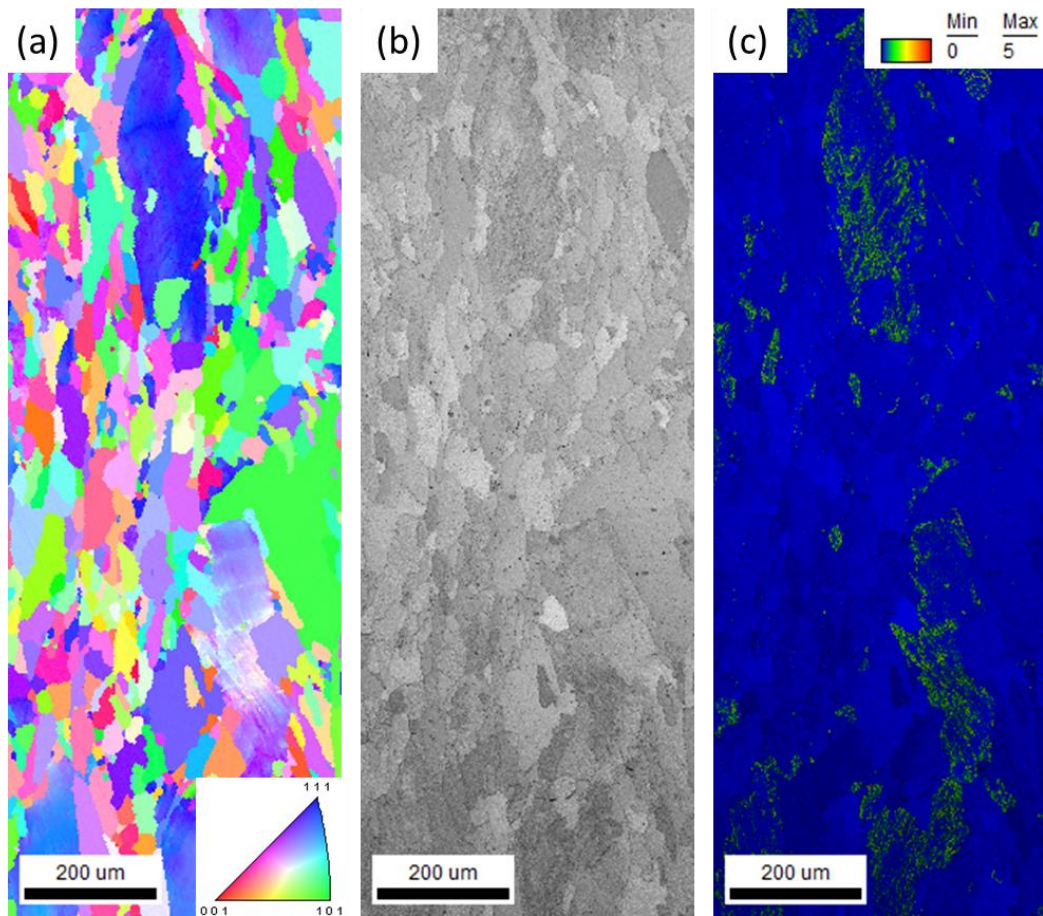


Figure S1. (a) Orientation (b) gray scale and (c) kernel average misorientation maps of FeCrAl alloy annealed at 1000 °C for 2 h.

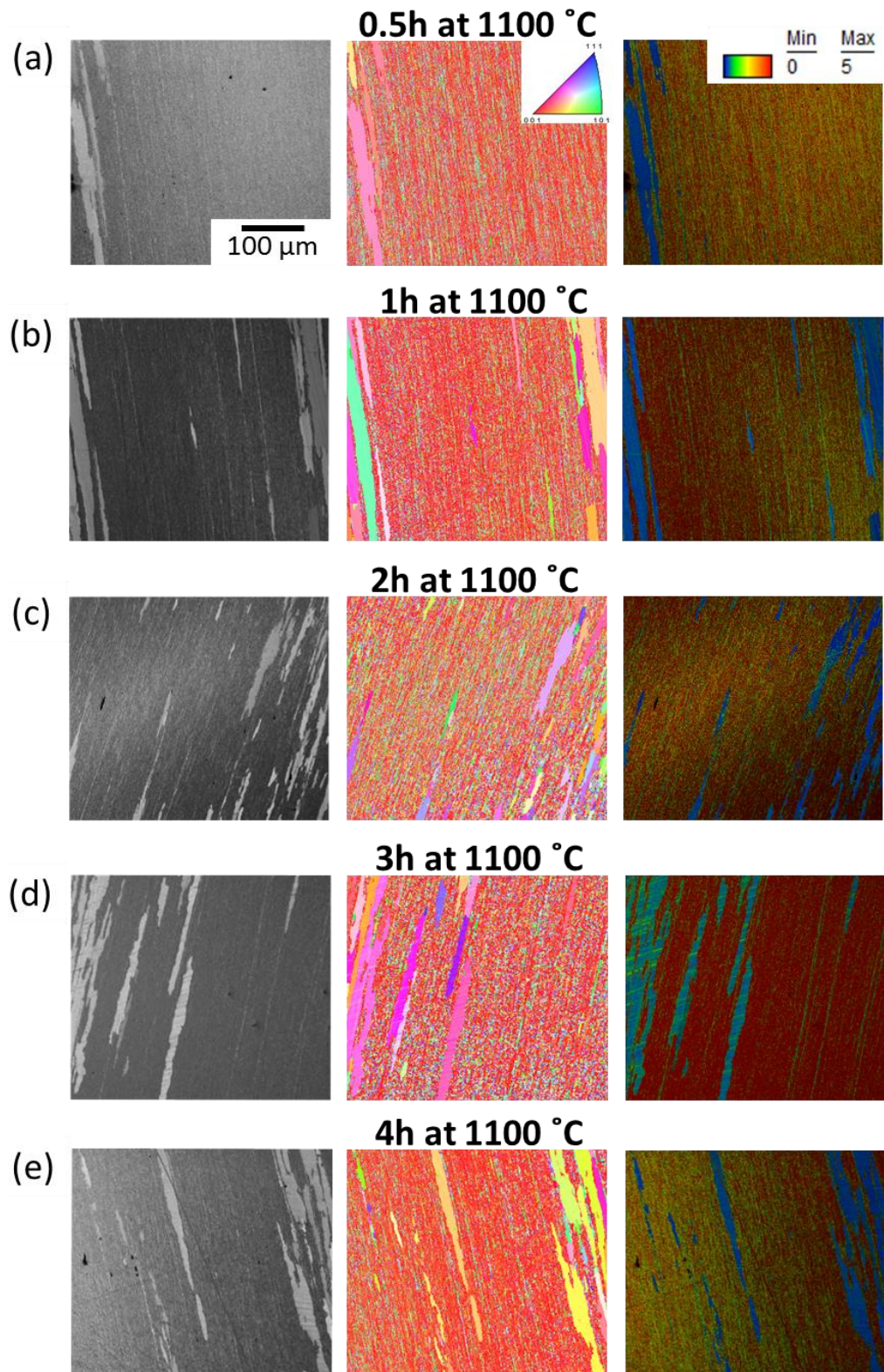


Figure S2. The gray scale, orientation and KAM maps of 14YWT alloys after (a) 0.5 h (b) 1 h (c) 2 h (d) 3 h and (e) 4 h of annealing at 1100 °C. Scales of all the micrographs are the same.