

Supplementary Materials

Selective and Colorimetric Detection of p-Nitrophenol Based on Inverse Opal Polymeric Photonic Crystals

Lu Li ^{1,2,*}, Tiantian Meng ^{1,2}, Wanbin Zhang ^{1,2}, Ying Su ¹, Juan Wei ^{3,*}, Xinwei Shi ⁴ and Guanghua Zhang ¹

¹ Key Laboratory of Auxiliary Chemistry and Technology for Chemical Industry, Ministry of Education, Shaanxi University of Science and Technology, Xi'an 710021, China

² The New Style Think Tank of Shaanxi Universities (Research Center for Auxiliary Chemistry and New Materials Development), Shaanxi University of Science and Technology, Xi'an 710021, China

³ Department of Chemistry, National University of Singapore, 3 Science Drive 3, Singapore 117543, Singapore

⁴ Engineering Center of QinLing Mountains Natural Products, Shaanxi Academy of Sciences, Xi'an Botanical Garden of Shaanxi Province (Institute of Botany of Shaanxi Province), Xi'an 710061, China

* Correspondence: lilu@sust.edu.cn (L.L.); weijuan@u.nus.edu (J.W.); Tel.: +86-29-8616-8073 (L.L.); +65-6516-8142 (J.W.)

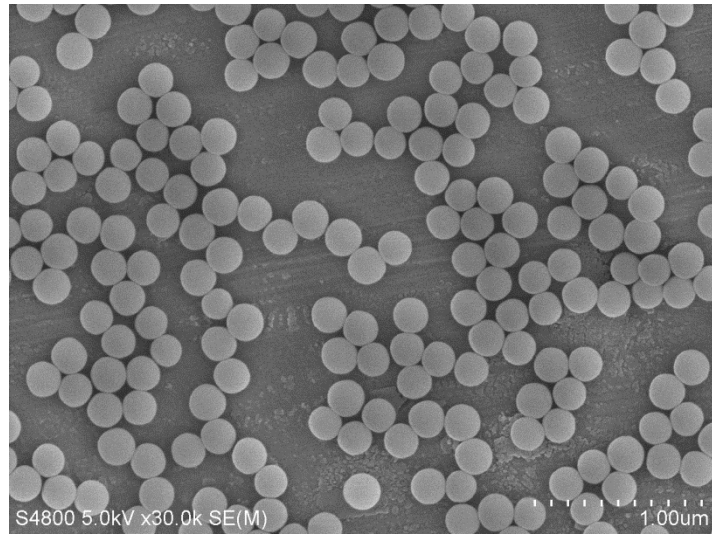


Figure S1. SEM image of the SiO₂ particles

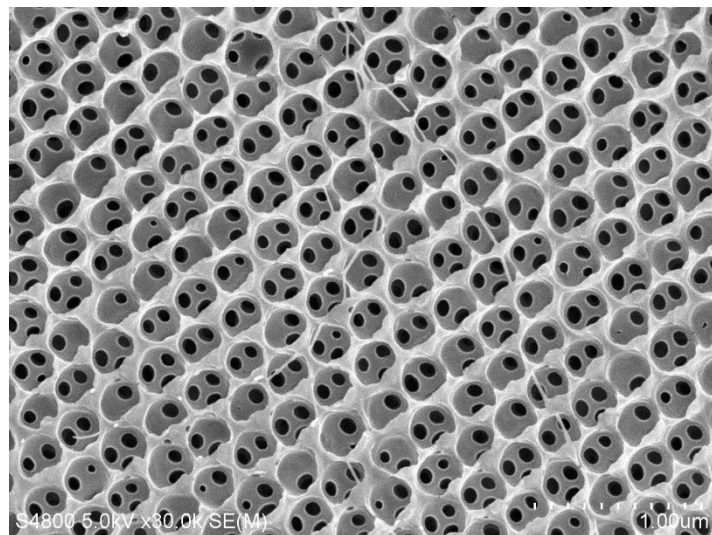


Figure S2. SEM image of the IOPPCs

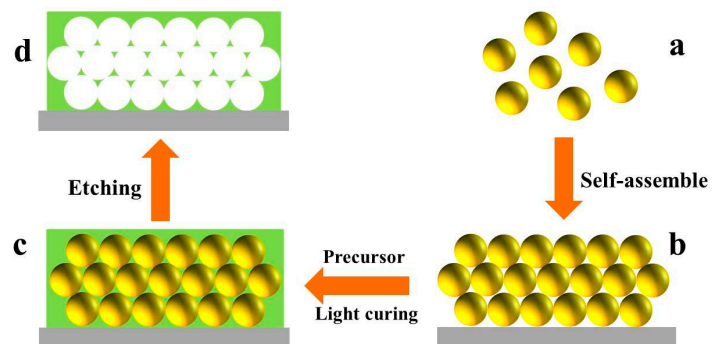


Figure S3. Schematic illustrations of the preparation of the IOPPCs: (a) SiO₂ particles; (b) photonic crystal templates; (c) photonic crystal templates after polymerization; (d) inverse opal polymeric photonic crystals.