

Enhanced Intestinal Immune Response in Mice after Oral Administration of Korea Red Ginseng-Derived Polysaccharide

Do Hwi Park ¹, Byungcheol Han ², Myoung-Sook Shin ^{1,*} and Gwi Seo Hwang ^{1,*}

¹ College of Korean Medicine, Gachon University, Seongnam-si, Gyeonggi-do 13120, Korea; parkdo@gc.gachon.ac.kr

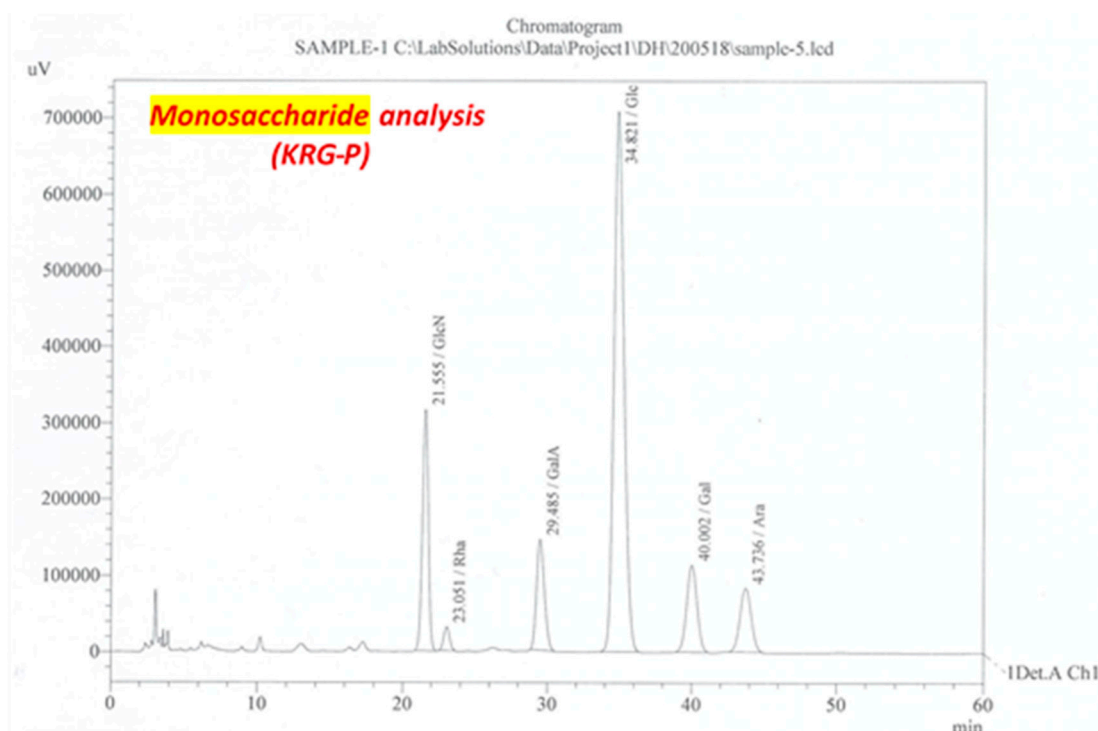
² Efficacy & Safety Team, Korea Ginseng Corp., 30, Gajeong-ro, Yuseong-gu, Daejeon 34128, Korea; bchan@kgc.co.kr

* Correspondence: ms.shin@gachon.ac.kr (M.-S.S.); seoul@gachon.ac.kr (G.S.H.);

Tel.: +82-31-750-5423 (M.-S.S.); +82-31-750-5421 (G.S.H.)

Received: 18 August 2020; Accepted: 23 September 2020; Published: date

Supplementary material



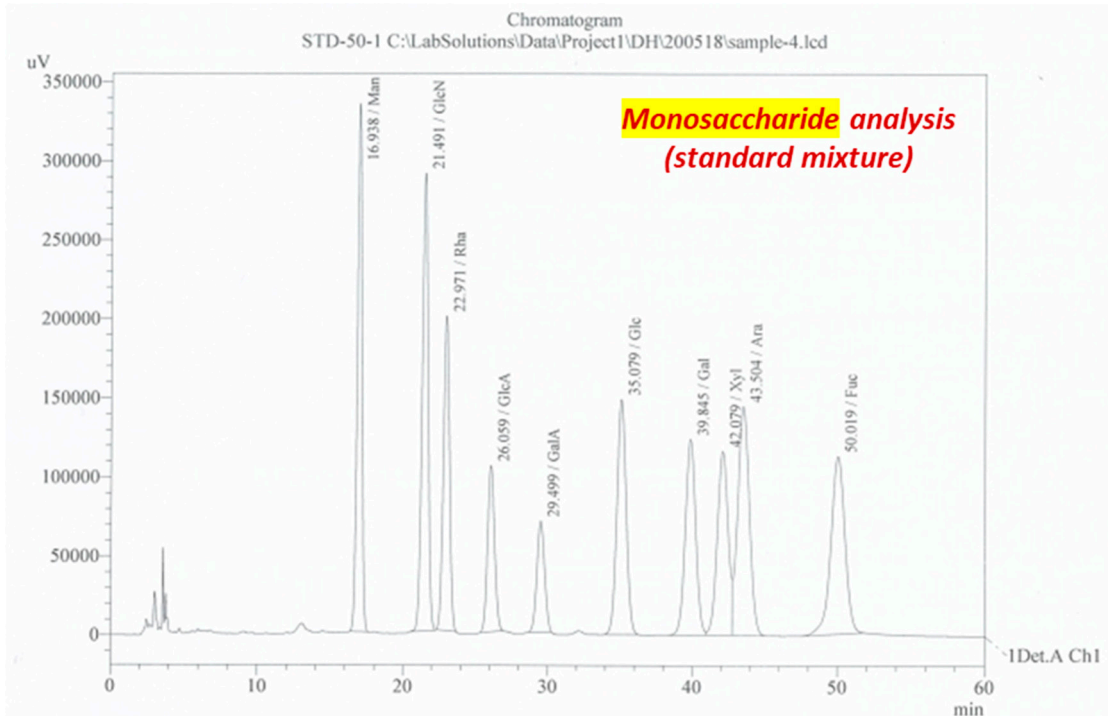


Figure S1. A HPLC chromatograms KRG-P monosaccharide analysis.