

Correlation between Surface Wettability and Orientation of Acrylic Pressure Sensitive Adhesives by Hydrophilic Derivative Ratio

Woong Cheol Seok^{1,2}, Jong Tae Leem^{1,2}, Ju Hui Kang¹, Young Jun Kim², Sangkug Lee¹ and Ho Jun Song^{1,*}

¹ Green and Sustainable Materials R&D Department/Research Institute of Clean Manufacturing System, Korea Institute of Industrial Technology, 89 Yangdaegiro-gil, Ipjang-myeon, Seobuk-gu, Cheonan-si, Chungcheongnam-do, 331-822, Republic of Korea

² School of Chemical Engineering, Sungkyunkwan University, 2066, Seobu-ro Jangan-gu, Suwon-si, Gyeonggi-do, 440-746, Republic of Korea

Phone : 82-41-589-8467; Fax: 82-41-589-8550; E-mail: song3026@kitech.re.kr*

*Corresponding Author

Ph. D. Ho Jun Song, E-mail : song3026@kitech.re.kr

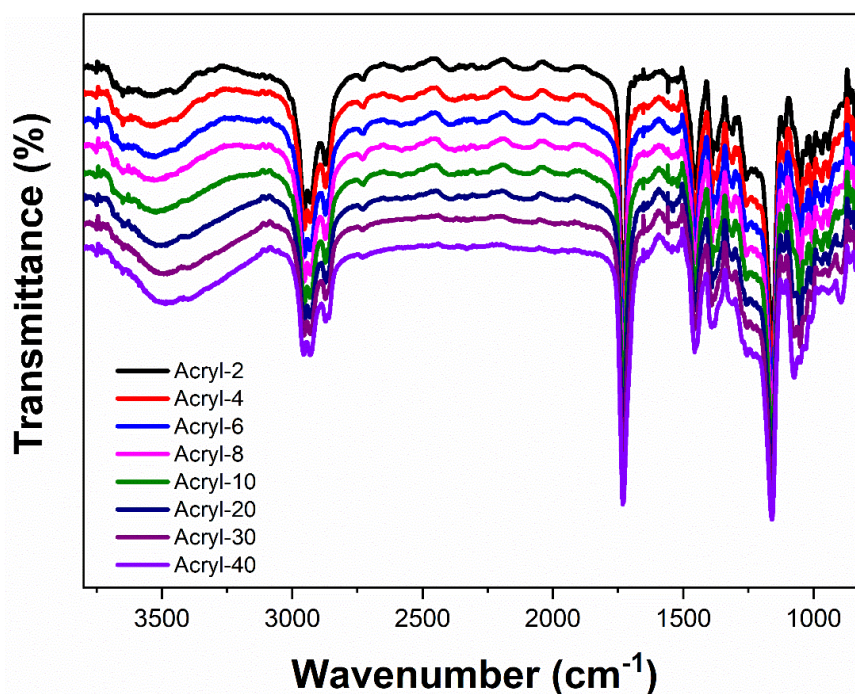


Figure S1. FT-IR spectrum of acrylic PSA films for HEA content; total region.

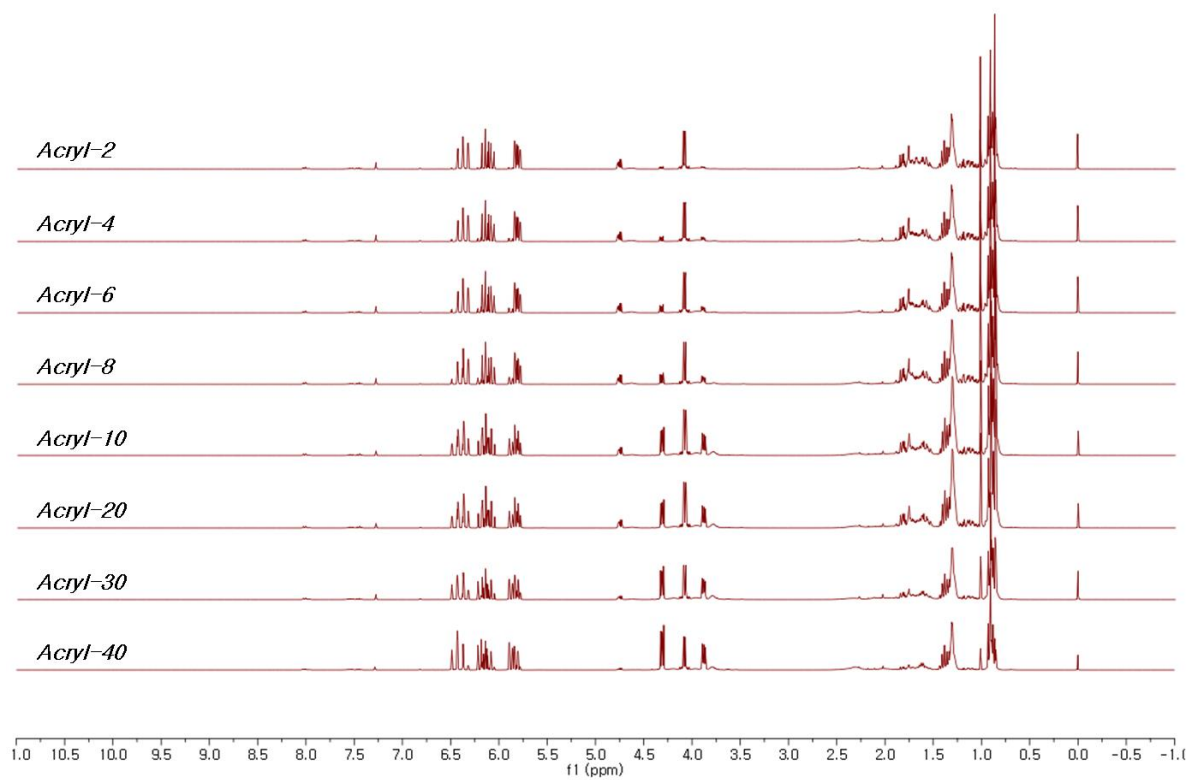


Figure S2. ¹H-NMR spectrum of acrylic pre-polymers for HEA content.