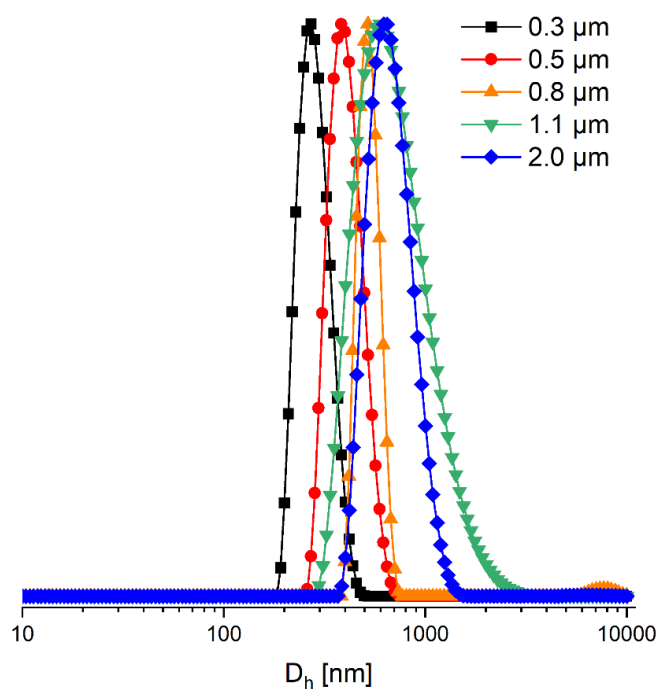


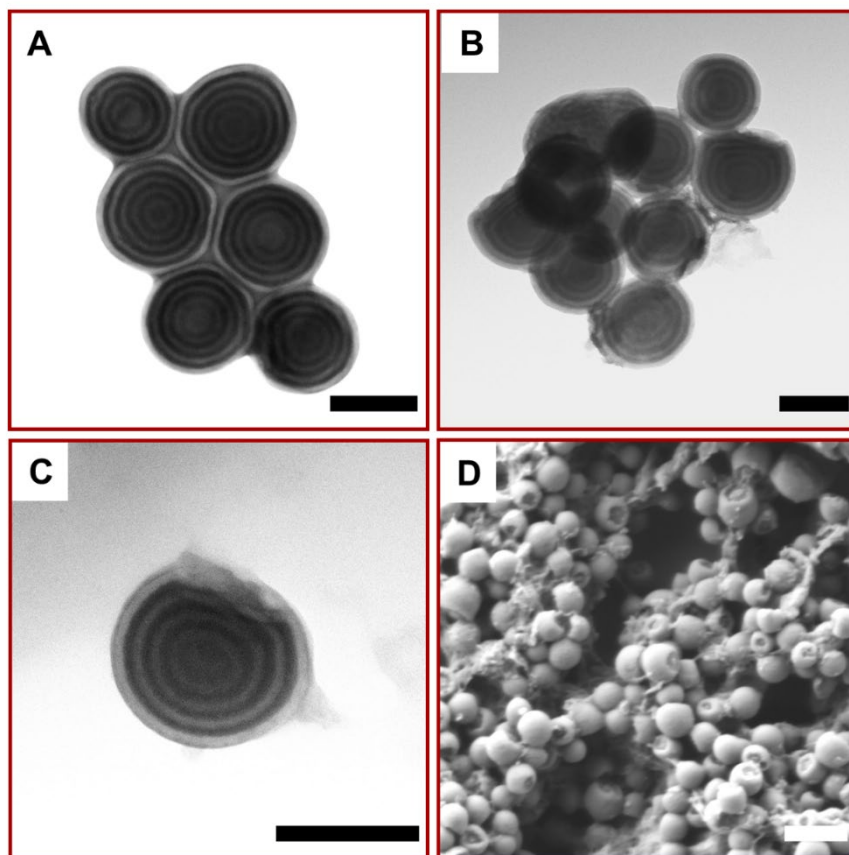
# Morphology and degradation of multicompartment microparticles based on semi-crystalline polystyrene-*block*-polybutadiene-*block*-poly(*L*-lactide) triblock terpolymers

Nicole Janoszka, Suna Azhdari, Christian Hils, Deniz Coban, Holger Schmalz, André H. Gröschel

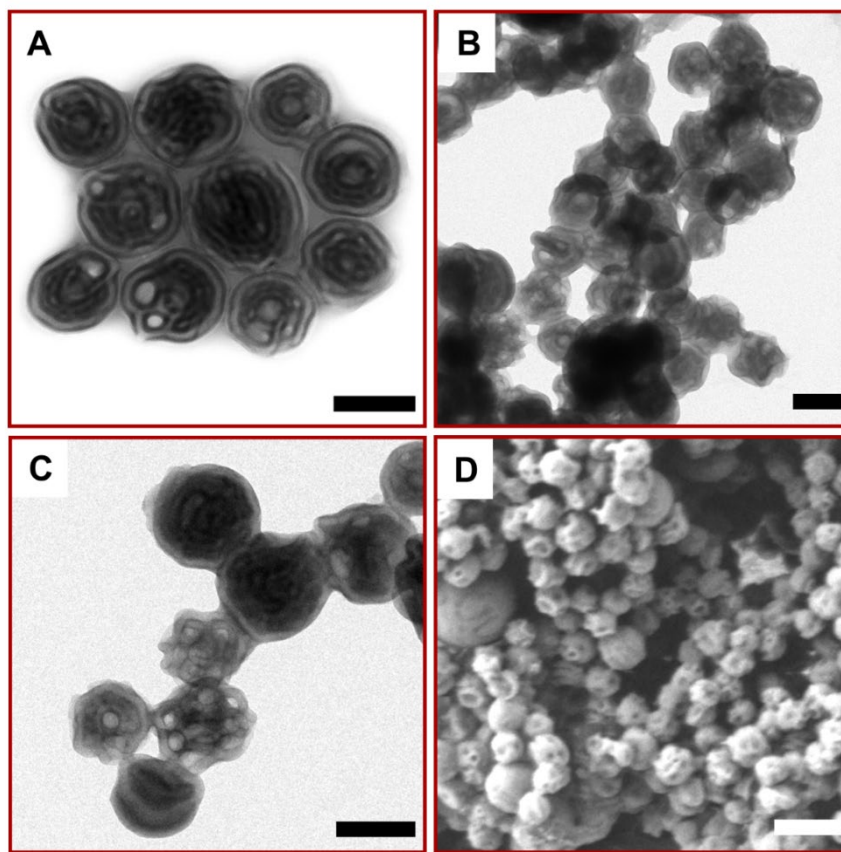
## Supporting Figures



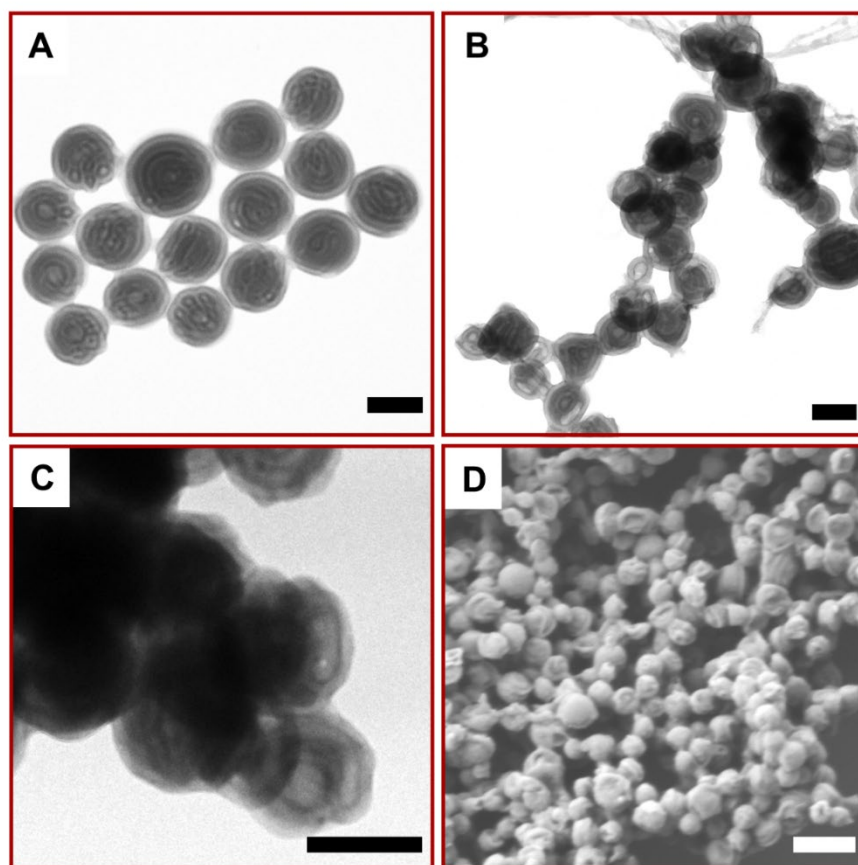
**Figure S1: CONTIN plots of SBL-37 MMs prepared with different membrane pore diameter (as indicated).**



**Figure S2: SBL-10 MMs prepared with a membrane pore diameter of 0.3  $\mu\text{m}$  before and after degradation. A) TEM image before, B,C) TEM images and D) SEM overview image after degradation under basic conditions. Scale bars: A-C) 200 nm, D) 500 nm.**



**Figure S3: SBL-37 MMs prepared with a membrane size of 0.3  $\mu\text{m}$  before and after degradation. A) TEM image before, B,C) TEM images and D) SEM overview image after degradation under basic conditions. Scale bars: A-C) 200 nm, D) 500 nm.**



**Figure S4: SBL-52 MMs prepared with a membrane size of 0.3  $\mu\text{m}$  before and after degradation. A) TEM image before, B,C) TEM images and D) SEM overview image after degradation under basic conditions. Scale bars A-C) 200 nm, D) 500 nm.**