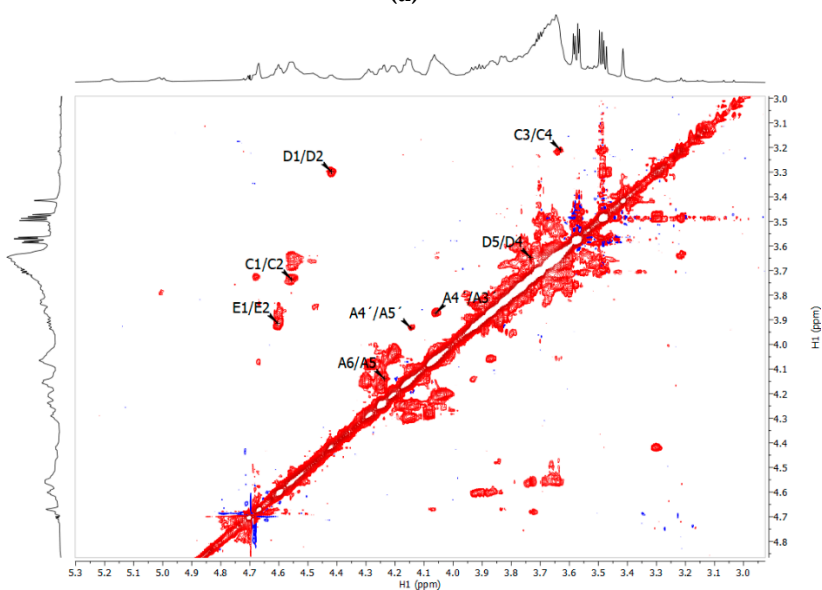
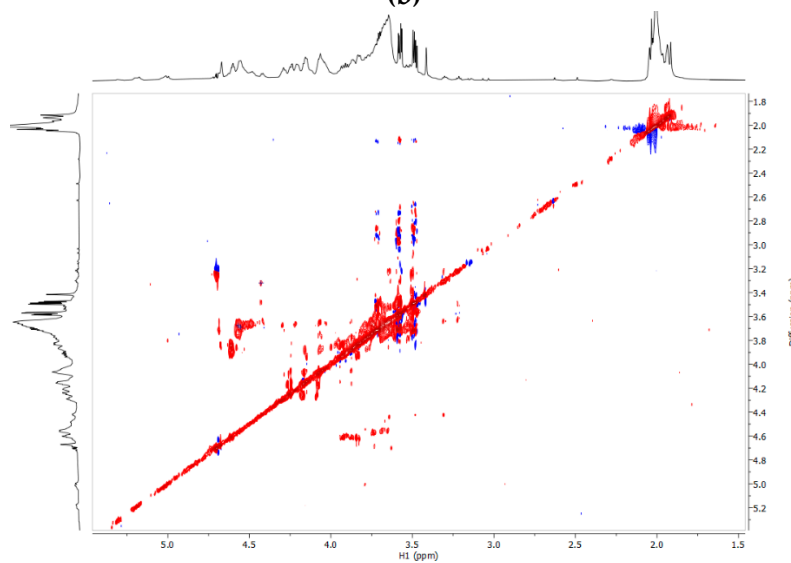


(a)



(b)



(c)

**Figure S1.** 2D NMR for polysaccharides from the tunic after applying the diffusion filter. (a)  $^1\text{H}$ - $^{13}\text{C}$  HSQC, (b)  $^1\text{H}$ - $^1\text{H}$  COSY, and (c)  $^1\text{H}$ - $^1\text{H}$  TOCSY.