

Supplementary Material

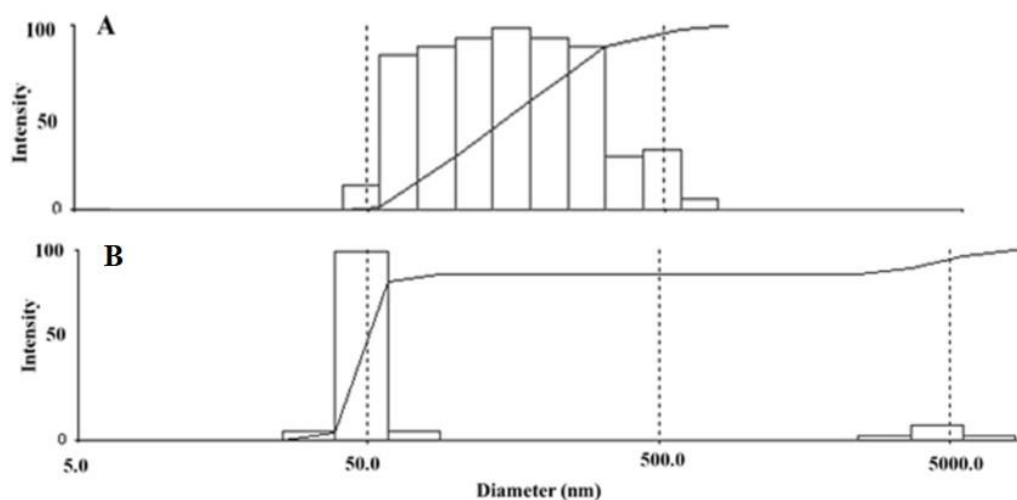


Figure S1. Molecular size distribution of flaxseed kernel RG-I: (A) Milli-Q water, and (B) 0.5 M KOH determined by dynamic light scattering (concentration: 0.1 mg/mL, temperature: 23 °C).

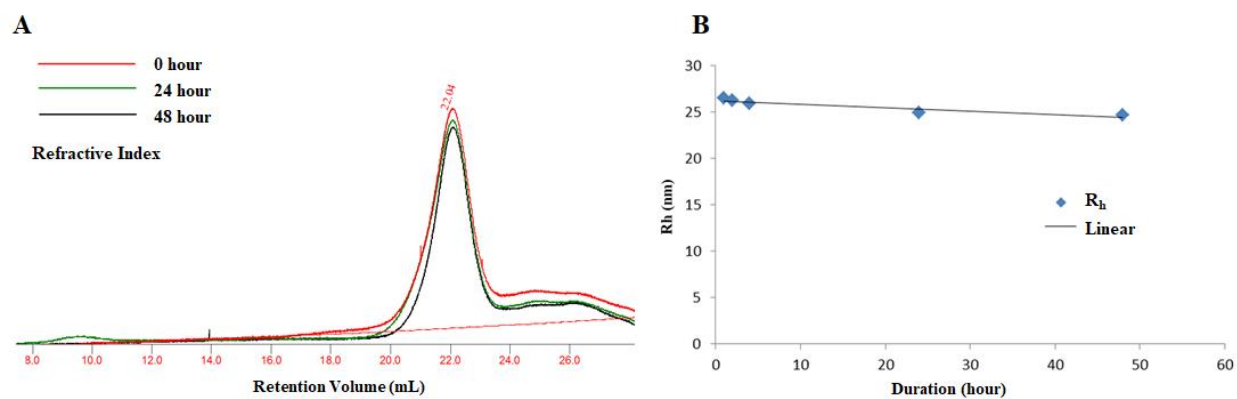


Figure S2. Stability of flaxseed kernel RG-I in 6 M NH₄OH: (A) HPSEC elution profile of KPI-ASF dissolving in 6 M NH₄OH after 0 h, 24 h & 48 h (concentration: 1 mg/mL), and (B) hydrodynamic radius (R_h) of KPI-ASF dissolving in 6 M NH₄OH after 1 h, 2 h, 4h, 24 h, & 48 h (concentration: 0.1 mg/mL)

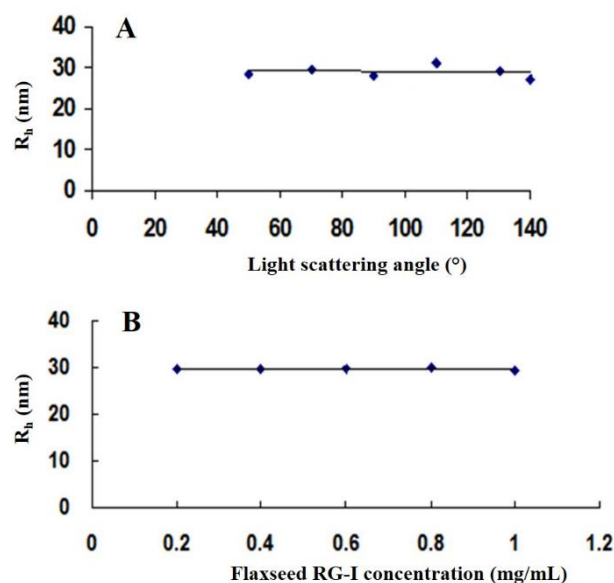


Figure S3. The mean hydrodynamic radius (R_h) of flaxseed mucilage RG-I: (A) the angular dependence (concentration: 0.2 mg/L) and (B) concentration dependence (at 90°) tests

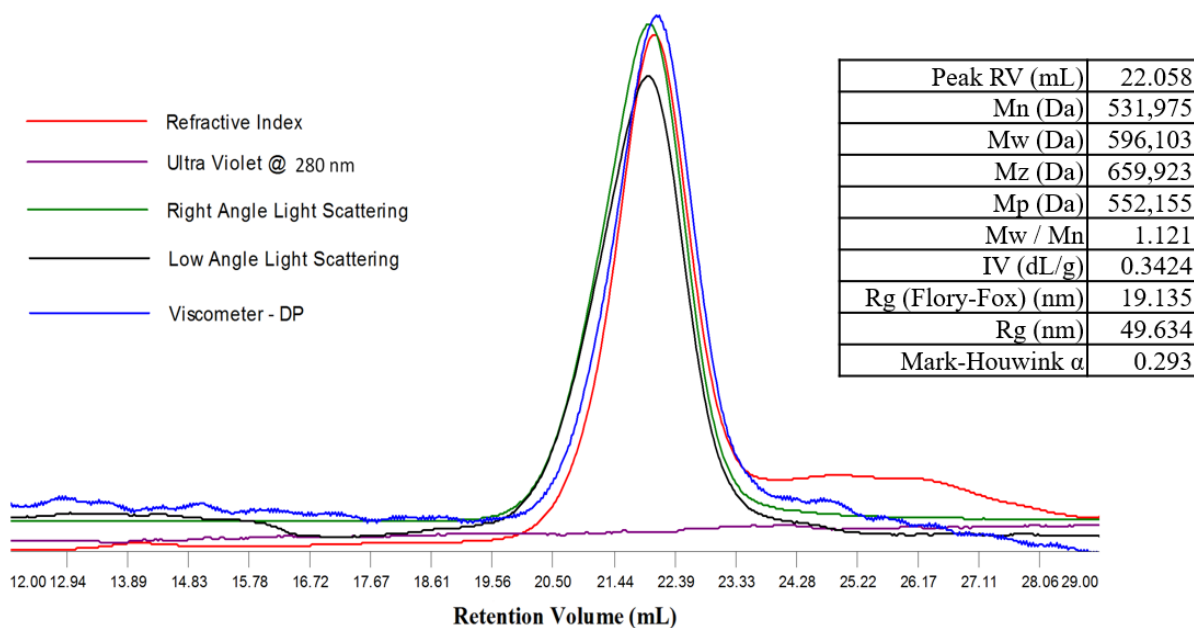


Figure S4. HPSEC elution profile of flaxseed kernel RG-I in 0.1 M NaNO_3 (concentration: 1 mg/mL, temperature: 40 °C)