

Supplementary material to:

**Additive manufactured poly( $\epsilon$ -caprolactone)-  
graphene scaffolds: lamellar crystal orientation,  
mechanical properties and biological performance**

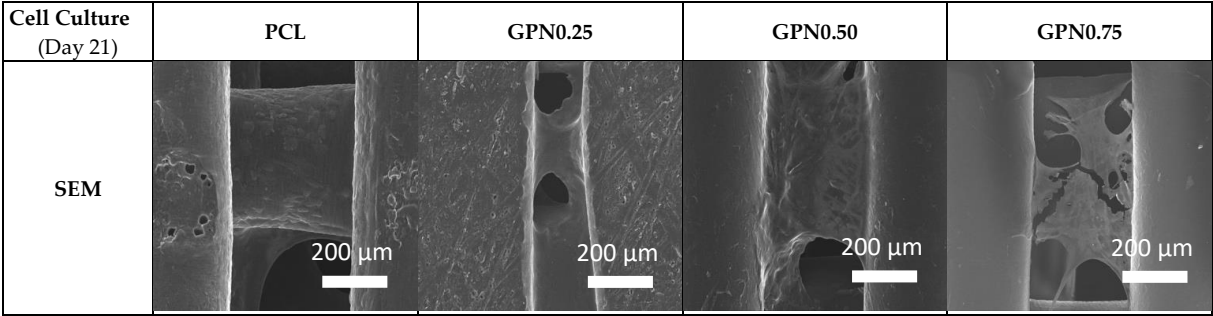
Sara Biscaia<sup>1</sup>, João C. Silva<sup>1,2,3</sup>, Carla Moura<sup>1</sup>, Tânia Viana<sup>1</sup>, Ana Tojeira<sup>1</sup>, Geoffrey R. Mitchell<sup>1</sup>, Paula Pascoal-Faria<sup>1</sup>, Frederico Castelo Ferreira<sup>2,3</sup> and Nuno Alves<sup>1\*</sup>

<sup>1</sup> Centre for Rapid and Sustainable Product Development, Polytechnic Institute of Leiria, Portugal; sara.biscaia@ipleiria.pt (S.B.); carla.moura@ipleiria.pt (C.M.); taniaviana@gmail.com (T.V.); anatojeira88@gmail.com (A.T.); geoffrey.mitchell@ipleiria.pt (G.R.M.); paula.faria@ipleiria.pt (P.P.F.); nuno.alves@ipleiria.pt (N.A.)

<sup>2</sup> Department of Bioengineering and iBB - Institute for Bioengineering and Biosciences, Instituto Superior Técnico, Universidade de Lisboa, Av. Rovisco Pais, Lisboa 1049-001, Portugal; joao.f.da.silva@tecnico.ulisboa.pt (J.C.S.); frederico.ferreira@tecnico.ulisboa.pt (F.C.F.)

<sup>3</sup> Associate Laboratory i4HB-Institute for Health and Bioeconomy, Instituto Superior Técnico, Universidade de Lisboa, Av. Rovisco Pais, Lisboa 1049-001, Portugal

\*Correspondence: [nuno.alves@ipleiria.pt](mailto:nuno.alves@ipleiria.pt)



**Figure S1** Bone-marrow MSCs proliferation assay – SEM analysis (Day 21), magnification:150x.