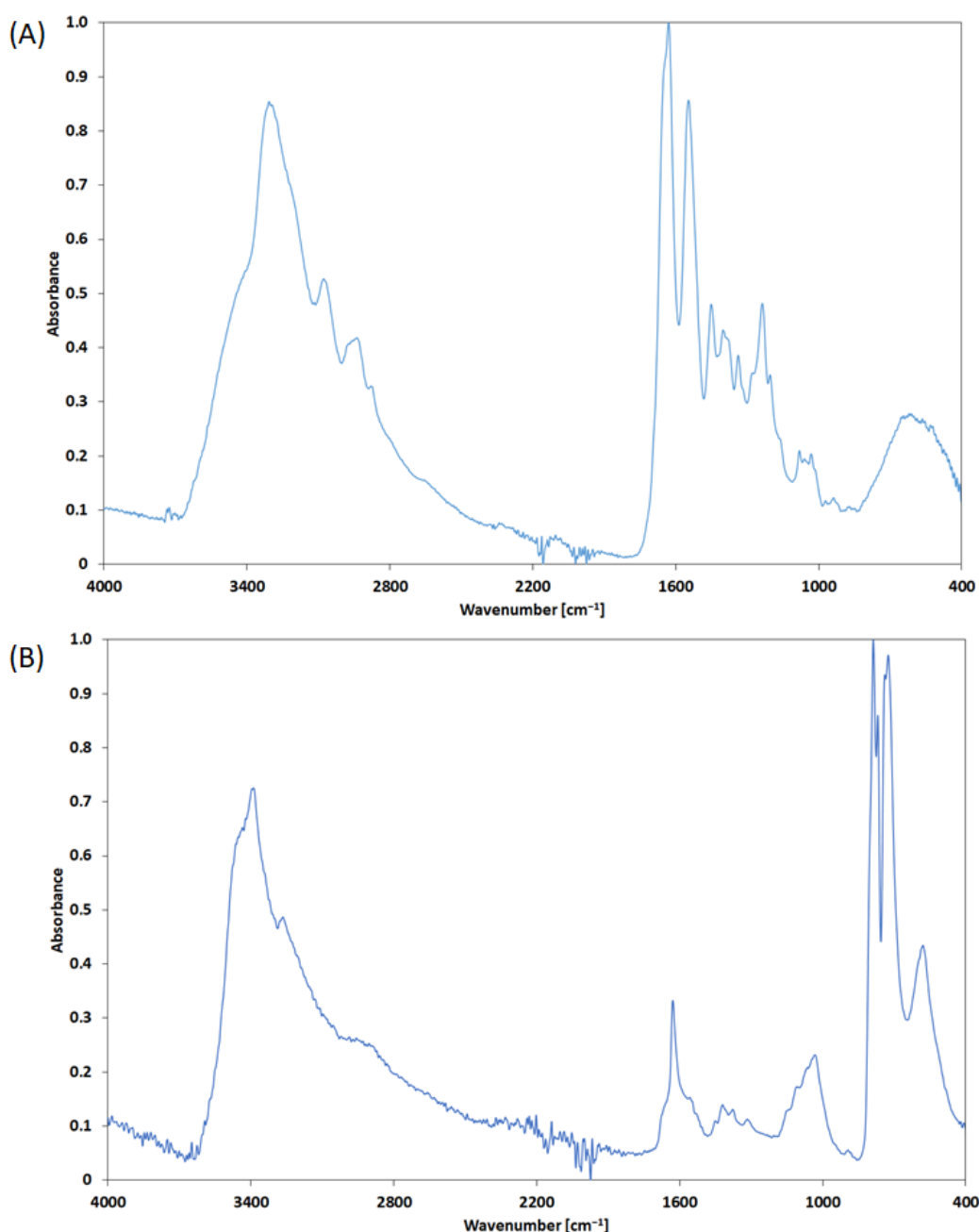
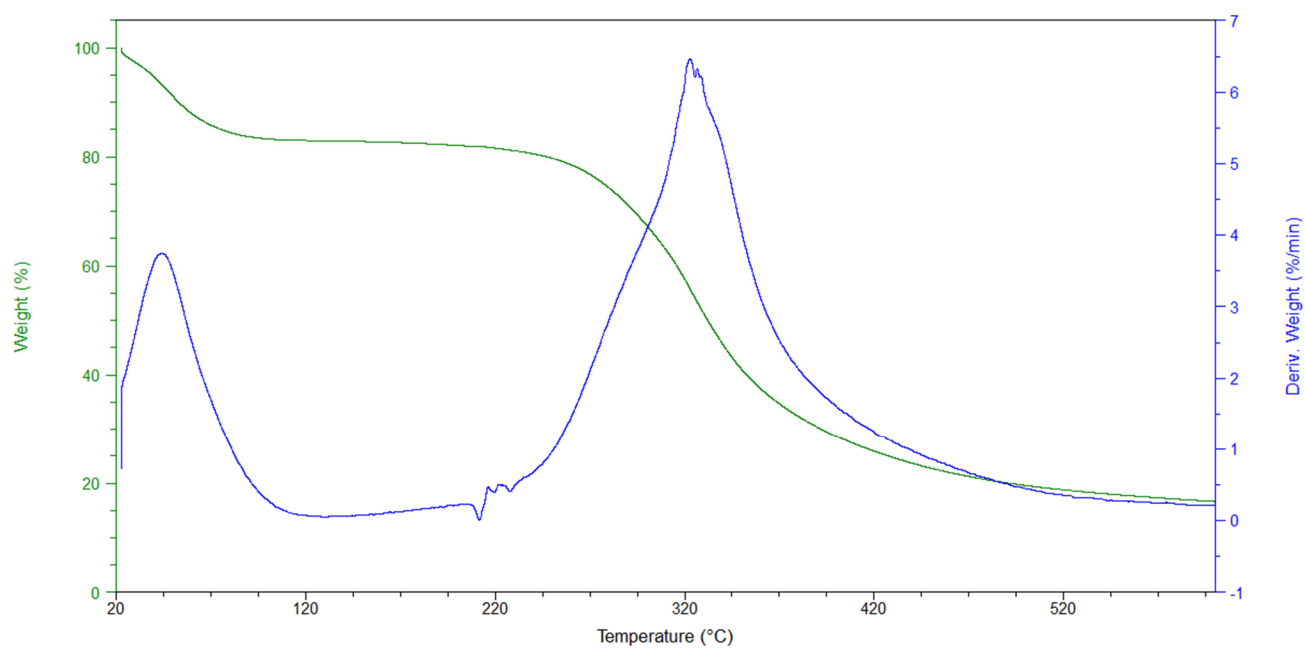


# Scaffolds Loaded with Dialdehyde Chitosan and Collagen— Their Physico-Chemical Properties and Biological Assessment

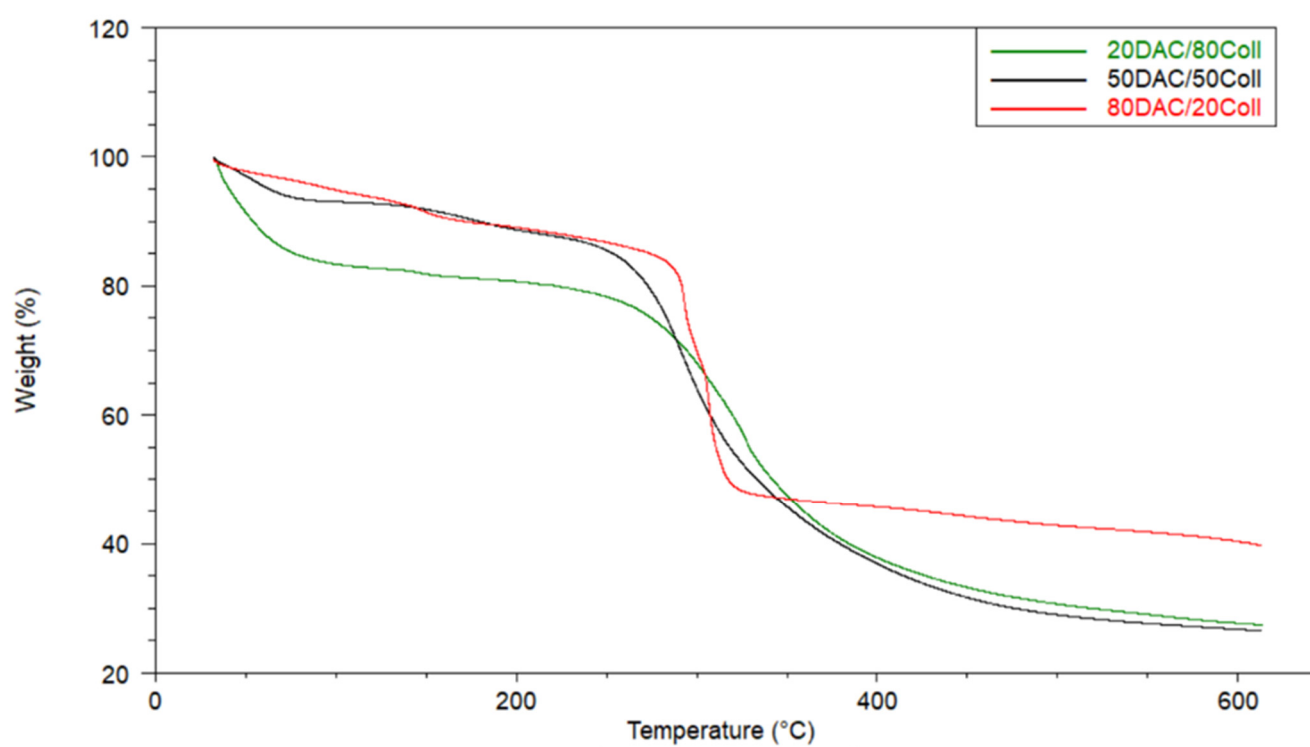
Sylwia Grabska-Zielińska <sup>1,\*</sup>, Judith M. Pin <sup>2,†</sup>, Beata Kaczmarek-Szczepańska <sup>3</sup>, Ewa Olewnik-Kruszkowska <sup>1</sup>, Alina Sionkowska <sup>3</sup>, Fernando J. Monteiro <sup>4,5,6</sup>, Kerstin Steinbrink <sup>2</sup>, Konrad Kleszczyński <sup>2</sup>



**Figure S1.** The FTIR spectra of (A) collagen and (B) dialdehyde chitosan.



**Figure S2.** The TGA-DTA curves of collagen.



**Figure S3.** The DTG curves of 20DAC/80Coll and 80DAC/20Coll scaffolds.