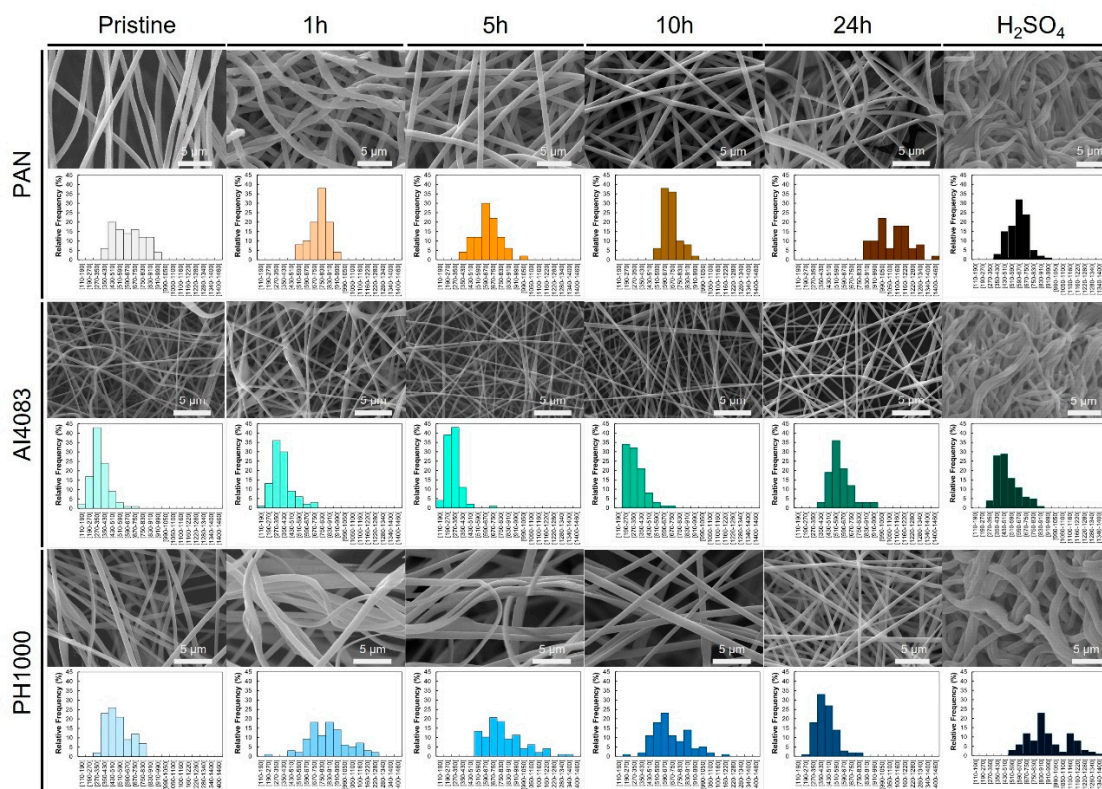


# Supplementary Information

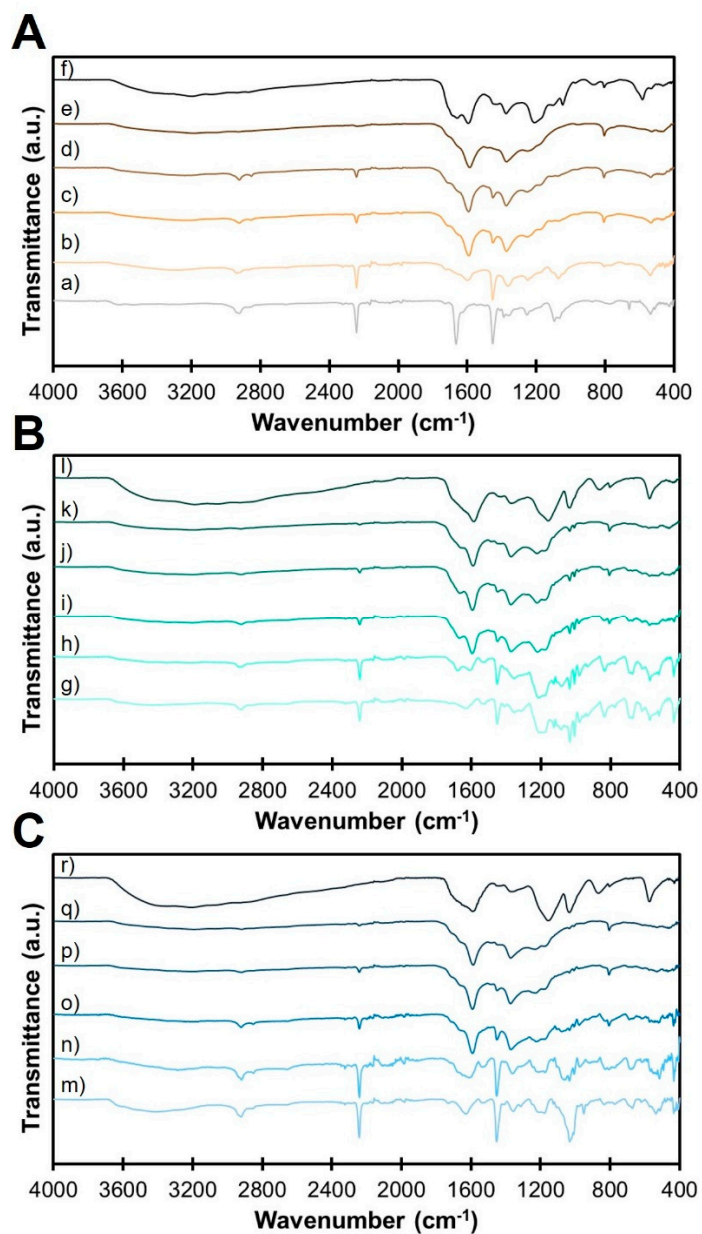
## Production of Blended Poly(acrylonitrile): Poly(ethylenedioxythiophene):Poly(styrene sulfonate) Electrospun Fibers for Neural Applications

Fábio F. F. Garrudo <sup>1,2,3,4,\*</sup>, Giulia Filippone <sup>2,3</sup>, Leonor Resina <sup>2,3,4,5</sup>, João C. Silva <sup>2,3,4</sup>, Frederico Barbosa <sup>2,3,4</sup>, Luís F. V. Ferreira <sup>3,4,6</sup>, Teresa Esteves <sup>3,4</sup>, Ana Clara Marques <sup>6,7</sup>, Jorge Morgado <sup>1,2,\*</sup> and Frederico Castelo Ferreira <sup>2,3,4,\*</sup>

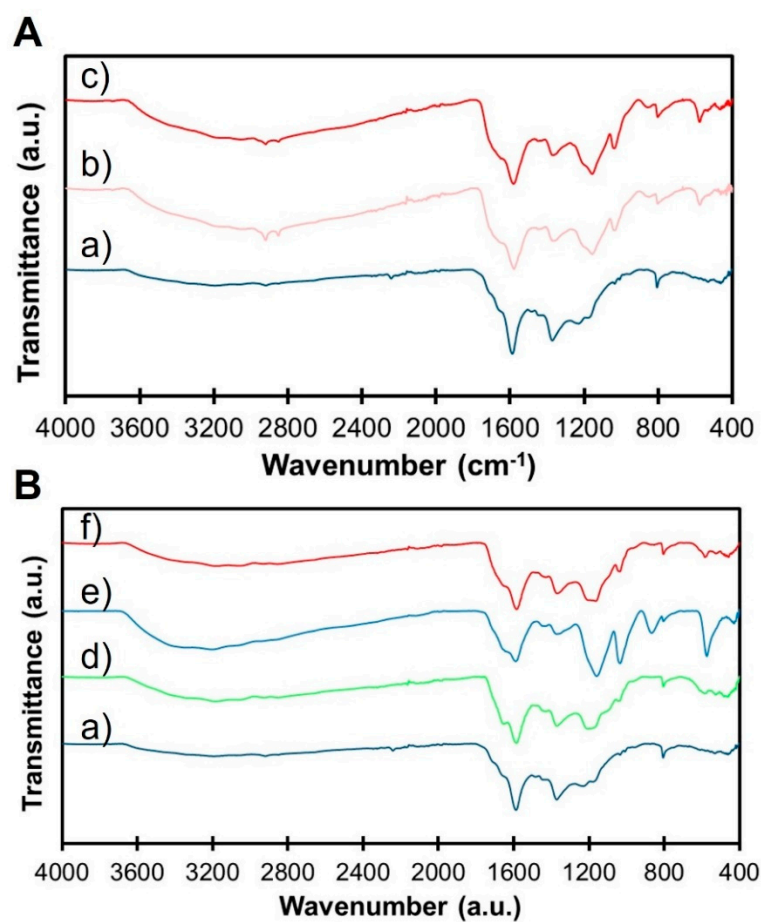
- <sup>1</sup> Instituto de Telecomunicações, Instituto Superior Técnico, Universidade de Lisboa, Avenida Rovisco Pais, 1049-001 Lisboa, Portugal
  - <sup>2</sup> Department of Bioengineering, Instituto Superior Técnico, Universidade de Lisboa, Avenida Rovisco Pais, 1049-001 Lisboa, Portugal; joao.f.da.silva@tecnico.ulisboa.pt (J.C.S.)
  - <sup>3</sup> iBB—Institute for Bioengineering and Biosciences, Instituto Superior Técnico, Universidade de Lisboa, Avenida Rovisco Pais, 1049-001 Lisboa, Portugal
  - <sup>4</sup> Associate Laboratory i4HB—Institute for Health and Bioeconomy, Avenida Rovisco Pais, 1049-001 Lisboa, Portugal
  - <sup>5</sup> Departament d'Enginyeria Química and Barcelona Research Center for Multiscale Science and Engineering, EEBE, Universitat Politècnica de Catalunya, 08019 Barcelona, Spain
  - <sup>6</sup> Department of Chemical Engineering, Instituto Superior Técnico, Universidade de Lisboa, Avenida Rovisco Pais, 1049-001 Lisboa, Portugal
  - <sup>7</sup> CERENA, DEQ, Instituto Superior Técnico, Universidade de Lisboa, Avenida Rovisco Pais, 1049-001 Lisboa, Portugal
- \* Correspondence: fabio.garrudo@tecnico.ulisboa.pt (F.F.F.G.); jmforgado@tecnico.ulisboa.pt (J.M.); frederico.ferreira@tecnico.ulisboa.pt (F.C.F.)



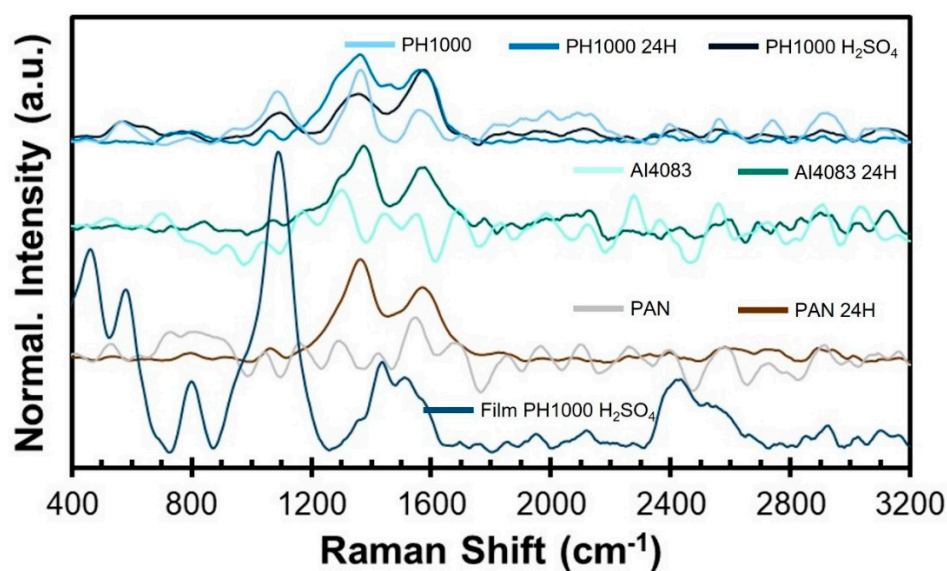
**Figure S1.** SEM images and respective size distribution histograms for all the fibers obtained in this study.



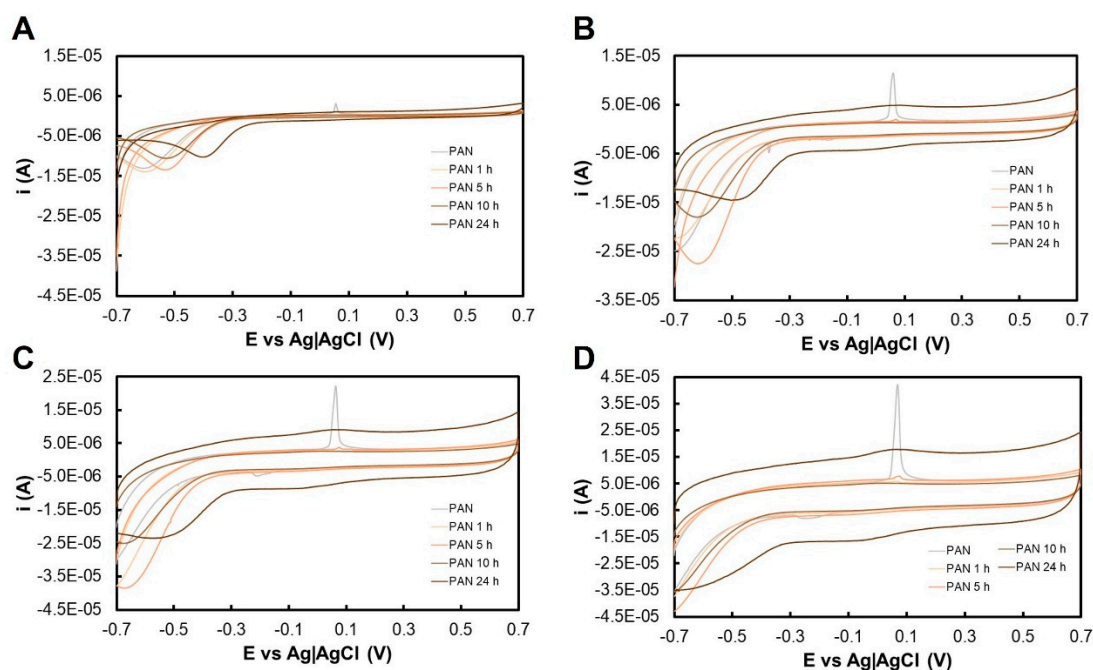
**Figure S2.** FTIR spectra of samples produced using (A) pristine PAN or PAN blended with (B) PEDOT:PSS AI4083 or (C) PEDOT:PSS PH1000. Sample code is a) PAN, b) PAN 1H, c) PAN 5H, d) PAN 10H, e) PAN 24H, f) PAN  $\text{H}_2\text{SO}_4$ , g) AI4083, h) AI4083 1H, i) AI4083 5H, j) AI4083 10H, k) AI4083 24H, l) AI4083  $\text{H}_2\text{SO}_4$ , m) PH1000, n) PH1000 1H, o) PH1000 5H, p) PH1000 10H, q) PH1000 24H, and r) PH1000  $\text{H}_2\text{SO}_4$ .



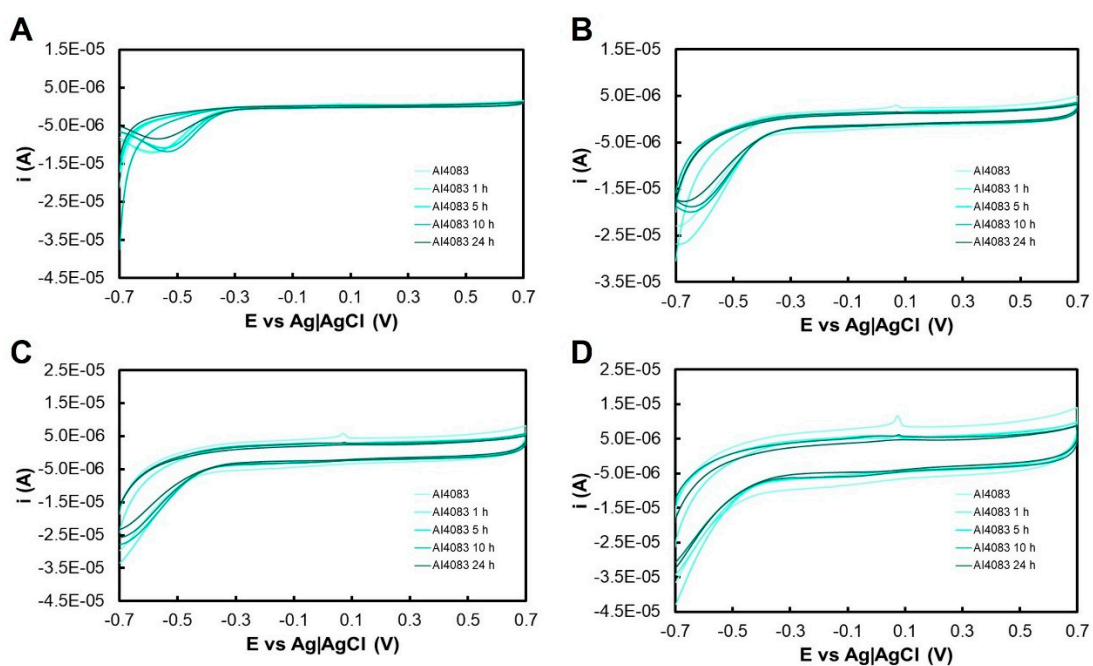
**Figure S3.** FTIR spectra of different PH1000 H<sub>2</sub>SO<sub>4</sub> samples at different stages of optimization. (A) Different incubation times in sulfuric acid at RT, a) zero hours, b) 1 hour, c) 24 hours. (B) Different temperature of the 30 min long incubation in sulfuric acid, d) 100°C, e) 130 °C, f) 150 °C.



**Figure S4.** Raman spectra for the main electrospun samples obtained in this study.

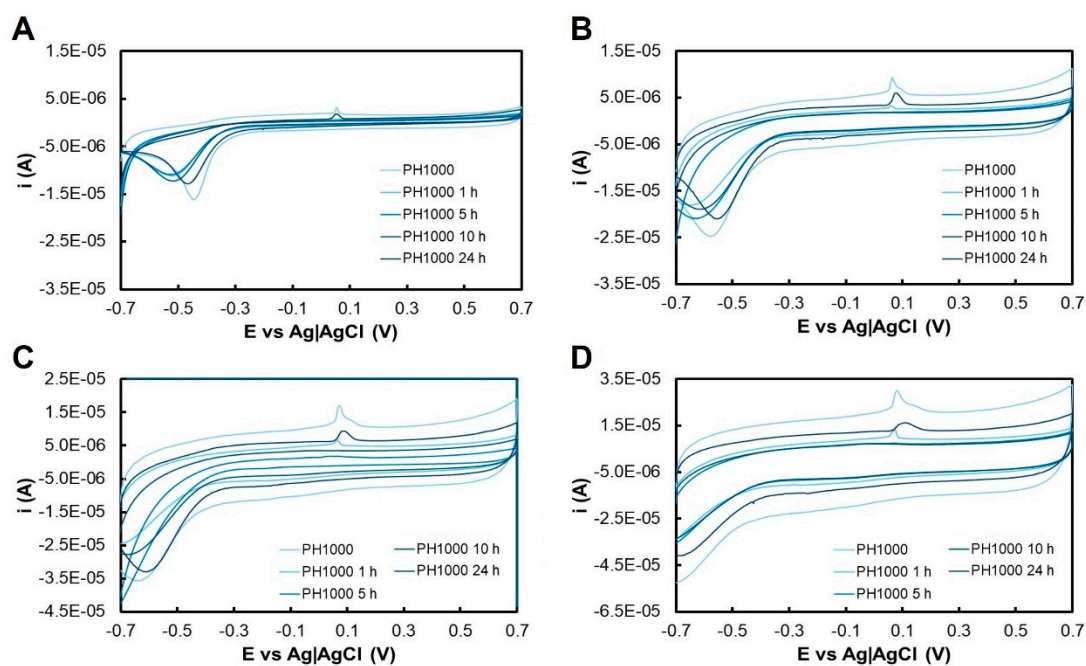


**Figure S5.** Cyclic voltammetry profiles of samples produced using pristine PAN. Different scanning speeds were tested: (A) 0.01 Vs, (B) 0.05 Vs, (C) 0.1 Vs, (D) 0.2 Vs.

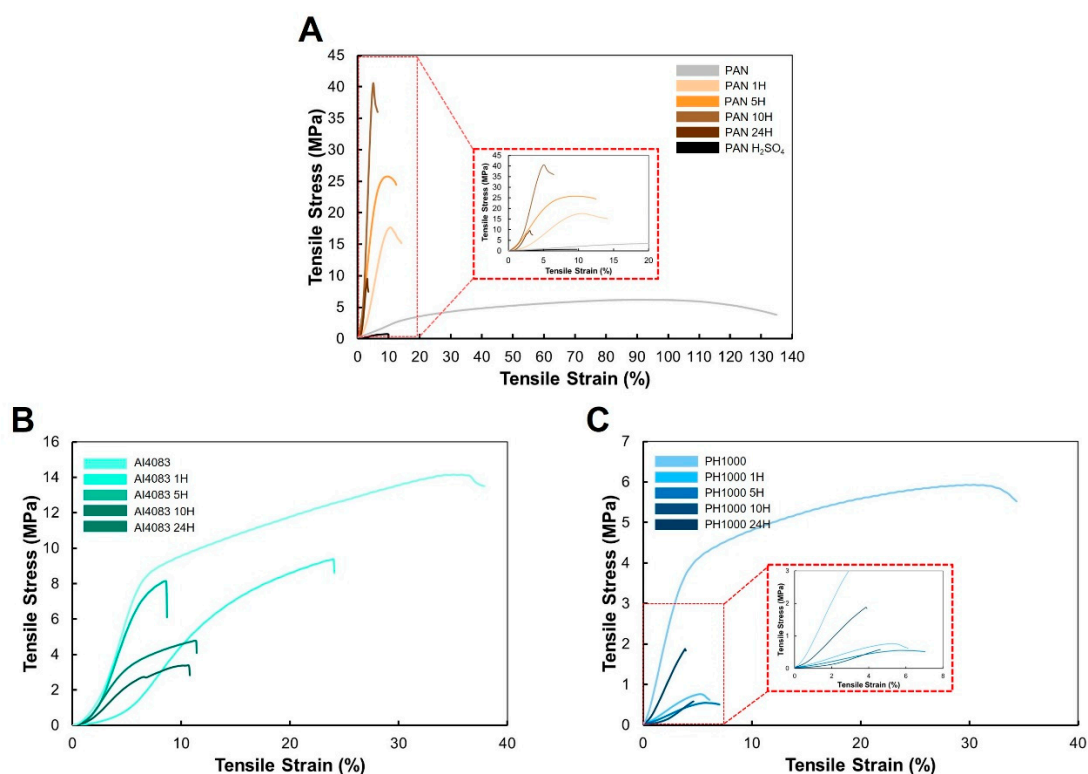


**Figure S6.** Cyclic voltammetry profiles of samples produced using PAN blended with PEDOT:PSS Clevios™ P VP AI 4083. Different scanning speeds were tested: (A) 0.01 Vs, (B) 0.05 Vs, (C) 0.1 Vs, (D) 0.2 Vs.

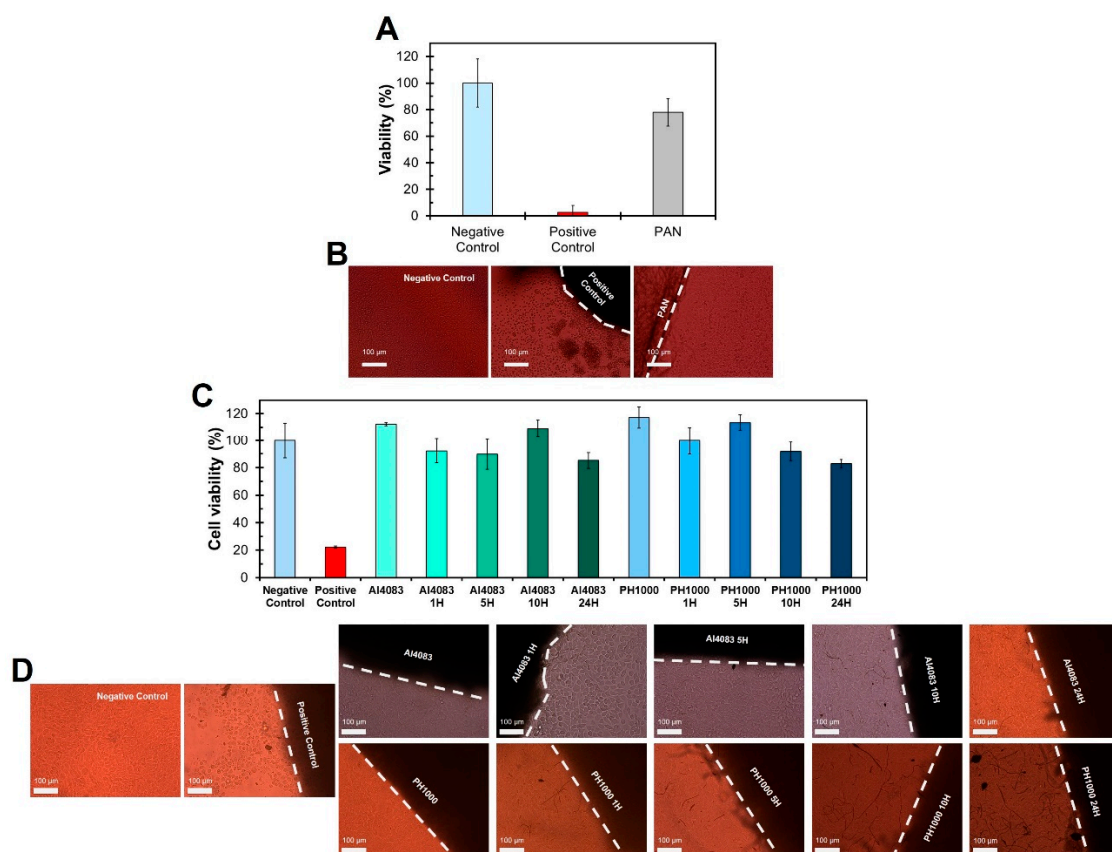




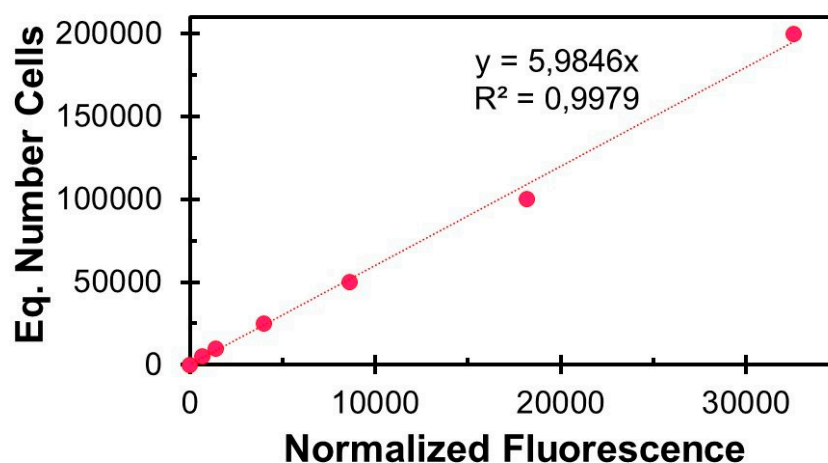
**Figure S7.** Cyclic voltammetry profiles of samples produced using PAN blended with PEDOT:PSS Clevios™ PH 1000. Different scanning speeds were tested: (A) 0.01 Vs, (B) 0.05 Vs, (C) 0.1 Vs, (D) 0.2 Vs.



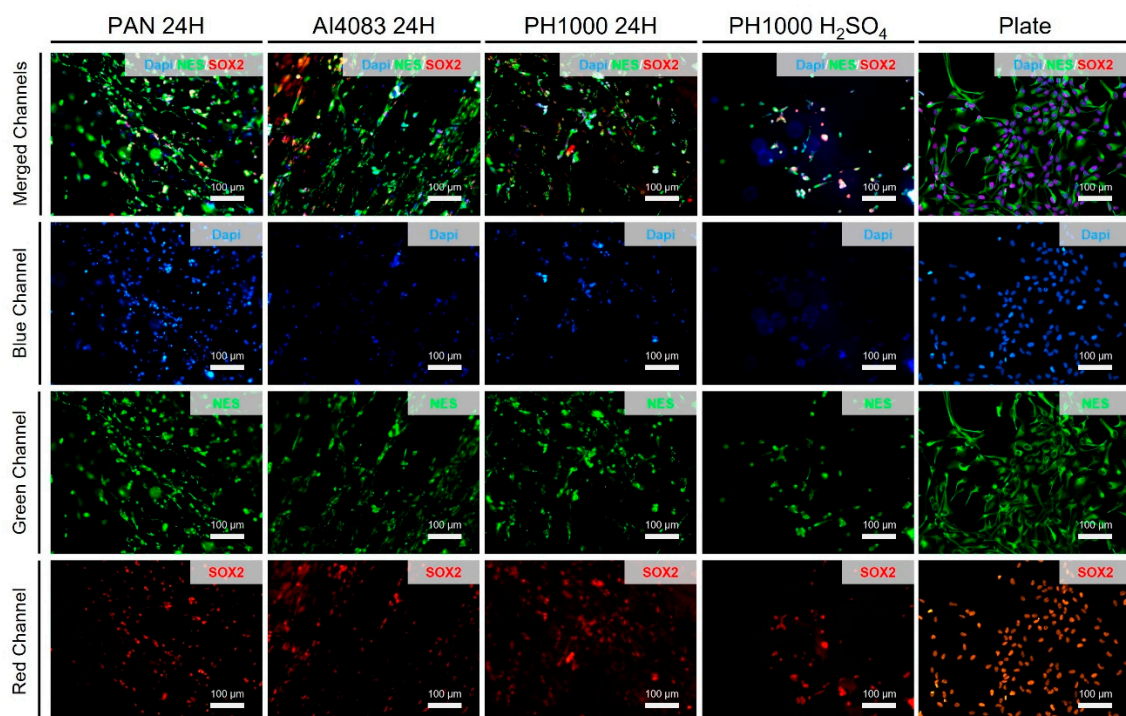
**Figure S8.** Examples of stress-strain curves for all samples obtained from (A) pristine PAN and blended with (B) PEDOT:PSS Clevios™ P VP AI 4083 or (C) PEDOT:PSS Clevios™ PH 1000.



**Figure S9.** Summary of fiber biocompatibility evaluation following the ISO10993 guidelines for pristine PAN fibers, including (A) MTT after 48h of cell incubation with the lixiviates (mean  $\pm$  std,  $n = 3$ ) and (B) microscopy images depicting the direct contact results (48h); and for all the PAN/PEDOT samples obtained in this study, including (C) MTT after 48h of cell incubation with the lixiviates (mean  $\pm$  std,  $n = 3$ ) and (D) microscopy images depicting the direct contact results (48h).



**Figure S10.** Alamar Blue® calibration curve for ReNCell-VM and used to calculate the equivalent number of cells in the proliferation assay.



**Figure S11.** Immunostaining (split channels and respective merge) of ReNCell-VM after proliferating for 7 days on different samples: SOX2 (red - stem cell marker), NES (green - neural stem cell marker) and Dapi counter-stain (blue – Nucleus).

**Table S1.** Summary of the sample code and respective average fiber diameter ( $n = 50-100$ ) of all the samples obtained in this study. (\*) means  $p < 0.05$  when compared with PAN. (+) means  $p < 0.05$  when compared with PAN 1H. (a) means  $p < 0.05$  when compared with PAN 5H. (b) means  $p < 0.05$  when compared with PAN 10H. (c) means  $p < 0.05$  when compared with PAN 24H. (d) means  $p < 0.05$  when compared with PAN  $H_2SO_4$ . (e) means  $p < 0.05$  when compared with AI4083. (f) means  $p < 0.05$  when compared with AI4083 1H. (g) means  $p < 0.05$  when compared with AI4083 5H. (h) means  $p < 0.05$  when compared with AI4083 10H. (i) means  $p < 0.05$  when compared with AI4083 24H. (j) means  $p < 0.05$  when compared with AI4083  $H_2SO_4$ . (k) means  $p < 0.05$  when compared with PH1000. (l) means  $p < 0.05$  when compared with PH1000 1H. (m) means  $p < 0.05$  when compared with PH1000 5H. (n) means  $p < 0.05$  when compared with PH1000 10H. (o) means  $p < 0.05$  when compared with PH1000 24H.

Sample description	Sample code	Fiber Diameter (nm)
PAN pristine	PAN	$640 \pm 159$
PAN 1h	PAN 1H	$759 \pm 98^{(*)}$
PAN 5h	PAN 5H	$654 \pm 135^{(+)}$
PAN 10h	PAN 10H	$703 \pm 85$
PAN 24h	PAN 24H	$1100 \pm 135^{(*)+(a)(b)}$
PAN 24h + $H_2SO_4$	PAN $H_2SO_4$	$612 \pm 107^{(*)+(b)(c)}$
PAN/PEDOT AI4083 pristine	AI4083	$356 \pm 104^{(*)+(a)(b)(c)(d)}$
PAN/PEDOT AI4083 1h	AI4083 1H	$380 \pm 108^{(*)+(a)(b)(c)(d)}$
PAN/PEDOT AI4083 5h	AI4083 5H	$288 \pm 54^{(*)+(a)(b)(c)(d)(e)(f)}$
PAN/PEDOT AI4083 10h	AI4083 10H	$321 \pm 95^{(*)+(a)(b)(c)(d)}$
PAN/PEDOT AI4083 24h	AI4083 24H	$592 \pm 117^{(*)+(b)(c)(d)(e)(f)(g)(h)}$
PAN/PEDOT AI4083 24h + $H_2SO_4$	AI4083 $H_2SO_4$	$507 \pm 125^{(*)+(a)(b)(c)(d)(e)(f)(g)(h)(i)}$
PAN/PEDOT PH1000 pristine	PH1000	$515 \pm 120^{(*)+(a)(b)(c)(d)(e)(f)(g)(h)}$

PAN/PEDOT PH1000 1h	PH1000 1H	$873 \pm 179^{(*)}(+)(a)(b)(c)(d)(e)(f)(g)(h)(i)(j)(k)}$
PAN/PEDOT PH1000 5h	PH1000 5H	$852 \pm 210^{(*)}(a)(b)(c)(d)(e)(f)(g)(h)(i)(j)(k)}$
PAN/PEDOT PH1000 10h	PH1000 10H	$685 \pm 171^{(a)(c)(d)(e)(f)(g)(h)(i)(j)(k)(l)(m)}$
PAN/PEDOT PH1000 24h	PH1000 24H	$437 \pm 109^{(*)}(+)(a)(b)(c)(d)(e)(f)(g)(h)(i)(j)(k)(l)(m)(n)}$
PAN/PEDOT PH1000 24h + H <sub>2</sub> SO <sub>4</sub>	PH1000 H <sub>2</sub> SO <sub>4</sub>	$940 \pm 210^{(*)}(+)(a)(b)(c)(d)(e)(g)(h)(i)(j)(k)(m)(n)(o)}$