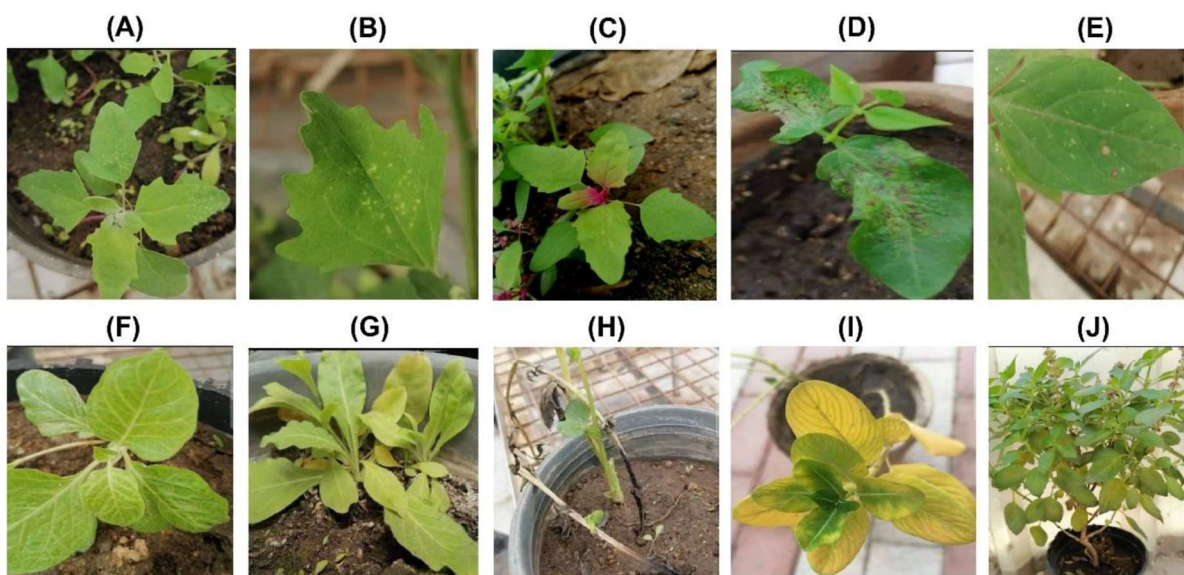


**Figure S1.** RT-PCR amplified product analysis using agarose gel electrophoresis. M: 1 kb DNA ladder; Lanes 1-2 healthy plant control; Lane 3 pepper plant naturally infected with AMV; Lane 4 pepper plant mechanically inoculated with AMV.



**Figure S2.** AMV infection symptoms on some differential host plants after mechanical inoculation (A): chlorotic local lesions on *Chenopodium quinoa*, (B): chlorotic local lesions on *C. murale*, (C): chlorotic local lesions on *C. amaranticolor*, (D): necrotic local lesions on *Vigna unguiculata*, (E): necrotic local

---

lesion and chlorotic flecking on *Phaseolus vulgaris*, (F): systemic mosaic on *Datura stramonium*, (G): systemic mosaic on *Nicotiana tabacum*, (H): systemic necrosis and death on *Vicia faba*, (I): systemic mosaic and yellowing on *Catharanthus roseus*, (J): systemic mosaic and yellowing on *Ocimum basilicum*.