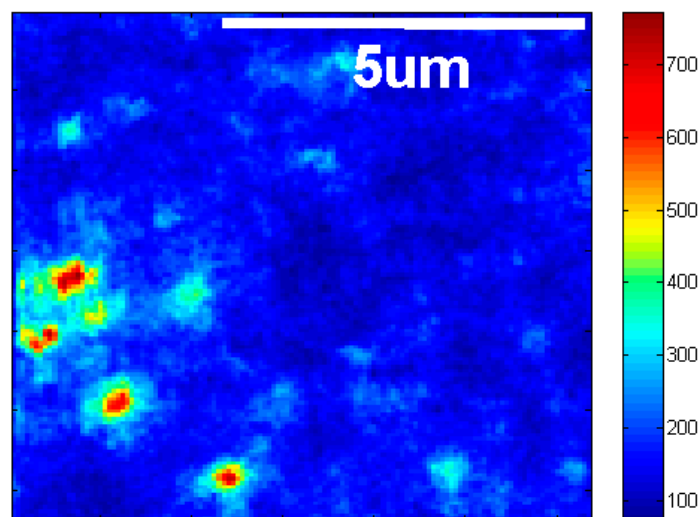
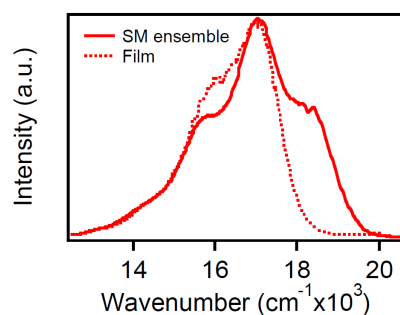


# Supplementary Materials: Understanding the Structural Evolution of Single Conjugated Polymer Chain Conformers

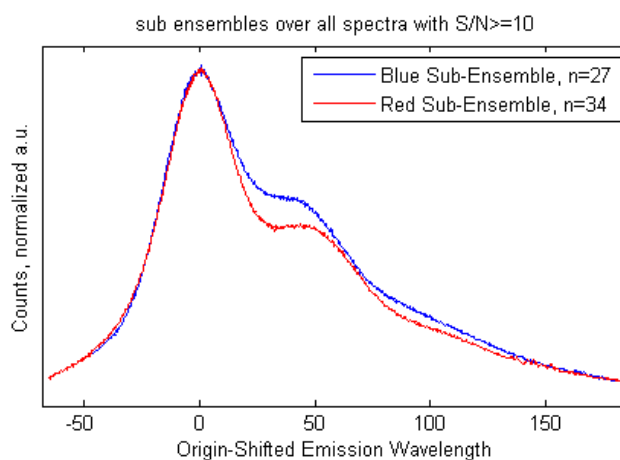
Adam J. Wise and John K. Grey



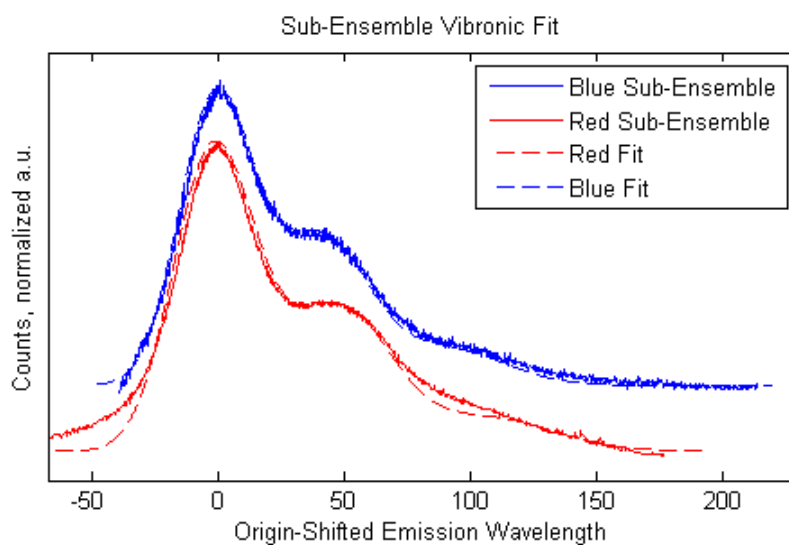
**Figure S1.** Representative PL image of well dispersed MEH-PPV single molecules in a polystyrene host.



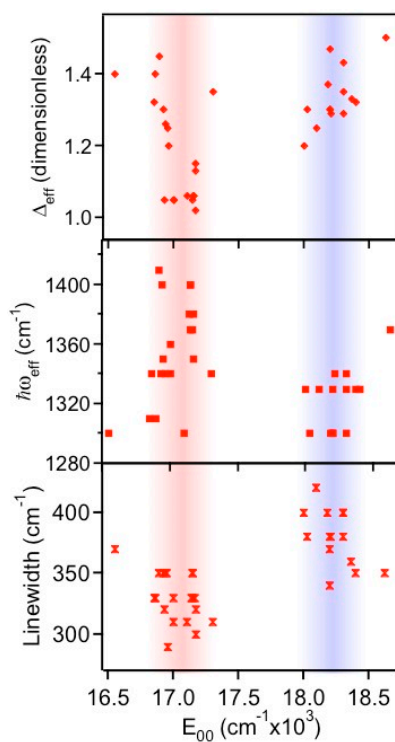
**Figure S2.** Comparison of ensemble averaged single molecule and bulk film PL spectra of MEH-PPV.



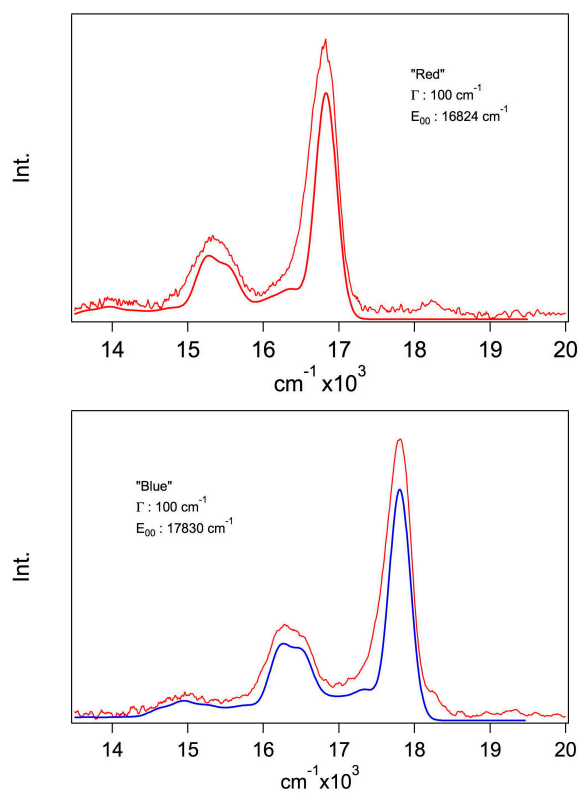
**Figure S3.** Comparison of blue and red sub-ensembles from different sample batches than those used in Figure 4a (main text).



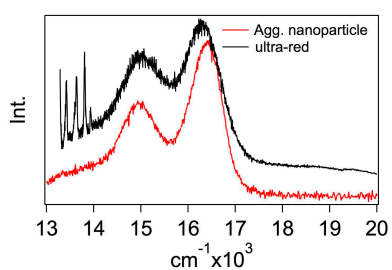
**Figure S4.** Vibronic fits to sub-ensembles shown in Figure S3.



**Figure S5.** Comparison of  $E_{0-0}$  maxima of MEH-PPV single molecule PL spectra and vibronic spectra parameters.



**Figure S6.** Low temperature (20 K) PL spectra of representative red and blue MEH-PPV emitters with line shape fit using the procedure described in the main text.



**Figure S7.** Comparison of PL spectra from ultra-red and aggregate nanoparticles of MEH-PPV.