

Supplementary Materials: Fabrication of Alkoxyamine-Functionalized Magnetic Core–Shell Microspheres via Reflux Precipitation Polymerization for Glycopeptide Enrichment

Meng Yu, Yi Di, Ying Zhang, Yuting Zhang, Jia Guo, Haojie Lu and Changchun Wang

The density of alkoxyamine group can be calculated according to TGA results. For the MSP@PNAMAm and MSP@PNAMAm, the final residual weight percentages of both two samples in 600 °C represented the inorganic magnetic core. For 1 g MSP@PNAMAm, we can use W_1/W_2 to represent the corresponding MSP@PNAMAm mass, and the differ $(W_1 - W_2)/W_2$ was caused by the deprotection, the loss of phthalimide group. So the mole of phthalimide in 1 g MSP@PNAMAm can be calculated by the formula below:

$$d = (W_1 - W_2)/(W_2 \times M_{pt}) \quad (1)$$

Where M_{pt} is the differ molecular weight caused by deprotection, the value is 132 g/mol. The d value could also represent the density of alkoxyamine group.

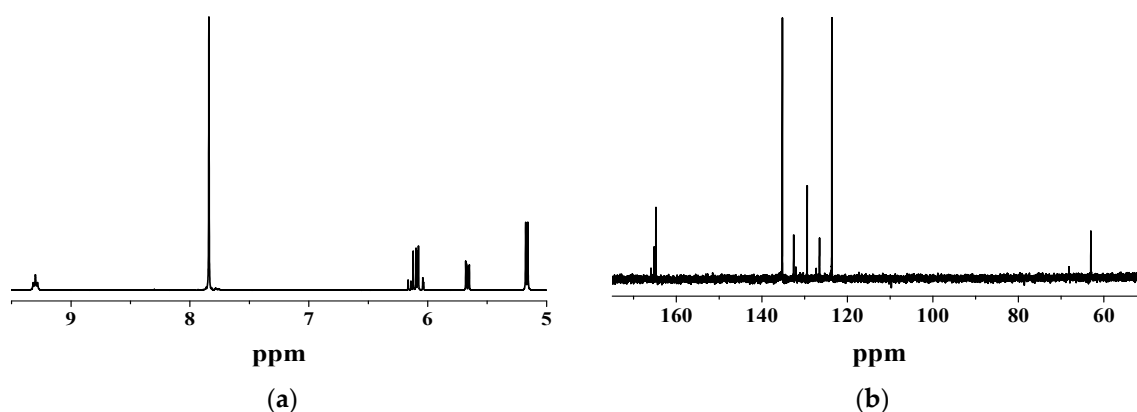


Figure S1. (a) ^1H NMR and (b) ^{13}C NMR spectra of monomer NAMAm-*p*.

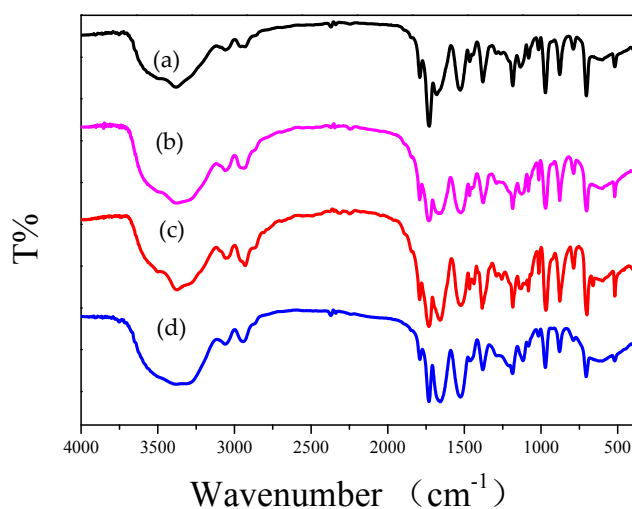


Figure S2. FT-IR spectra of PNAMAm-*p* microspheres prepared with different ratios of MBA; (a) 20%; (b) 30%; (c) 40%; (d) 50%.

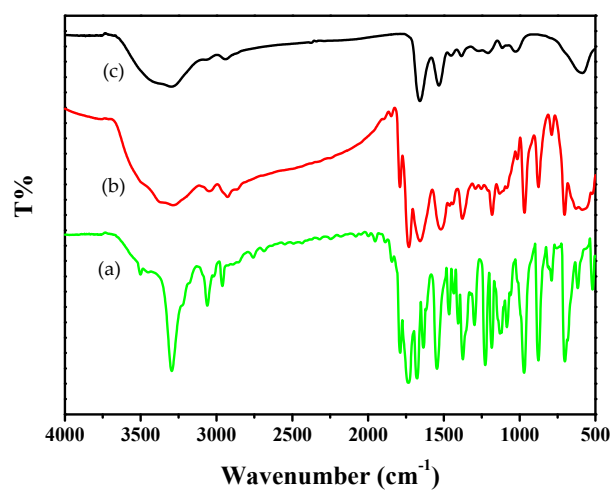


Figure S3. FT-IR spectra of (a) NAMAm-*p*, (b) MSP@PNAMAm-*p* and (c) MSP@PNAMAm.

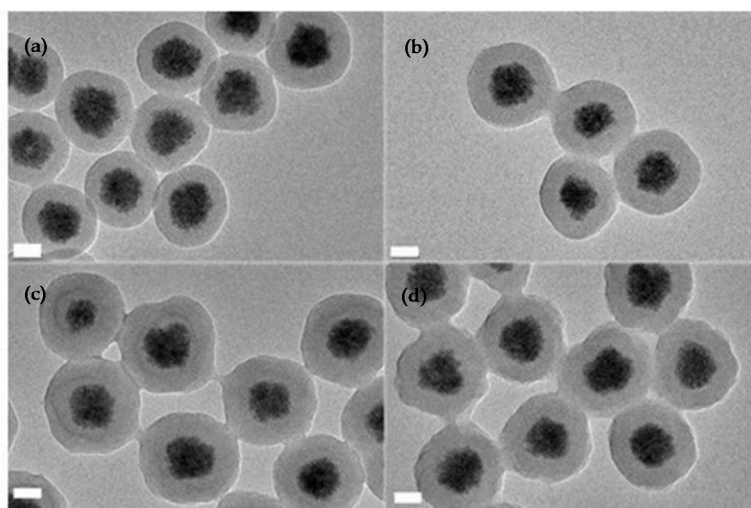


Figure S4. TEM images of MSP@PNAMAm-*p* with different ratios of NAMAm and MBA: (a) 4:1; (b) 7:3; (c) 3:2, (d) 1:1. The scale bar is 100 nm.

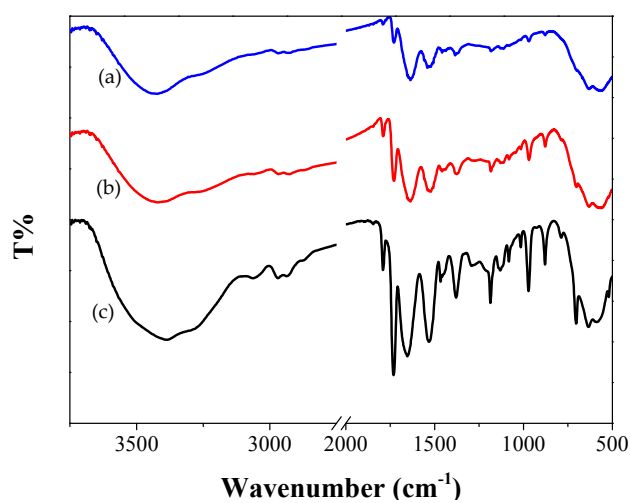


Figure S5. FT-IR Spectra of MSP@PNAMAm-*p-co*-PNIPAm with different ratios of NAMAm-*p* and NIPAm: (a) NAMAm-*p*:NIPAm = 1:3; (b) NAMAm-*p*:NIPAm = 1:1; (c) NAMAm-*p*:NIPAm = 3:1

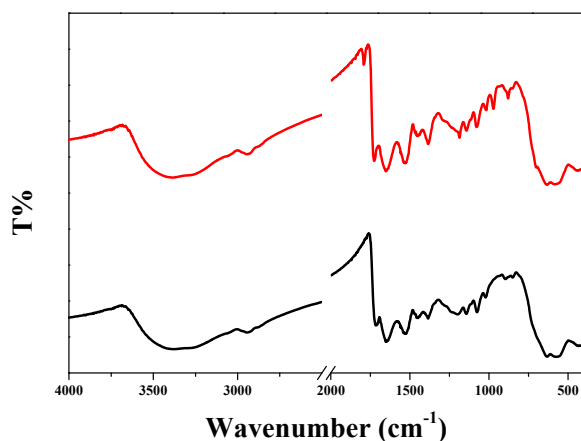


Figure S6. FT-IR Spectra of (a) MSP@PNAMAm-*p*-co-PAA and (b) MSP@PNAMAm-*co*-PAA.

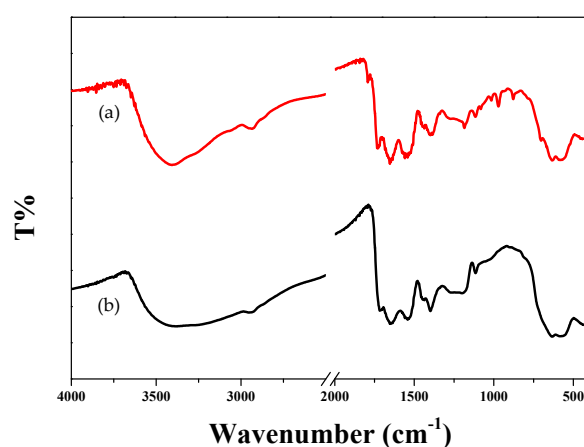


Figure S7. FT-IR Spectra of (a) MSP@PNAMAm-*p*-co-PHEMA and (b) MSP@PNAMAm-*co*-PHEMA.

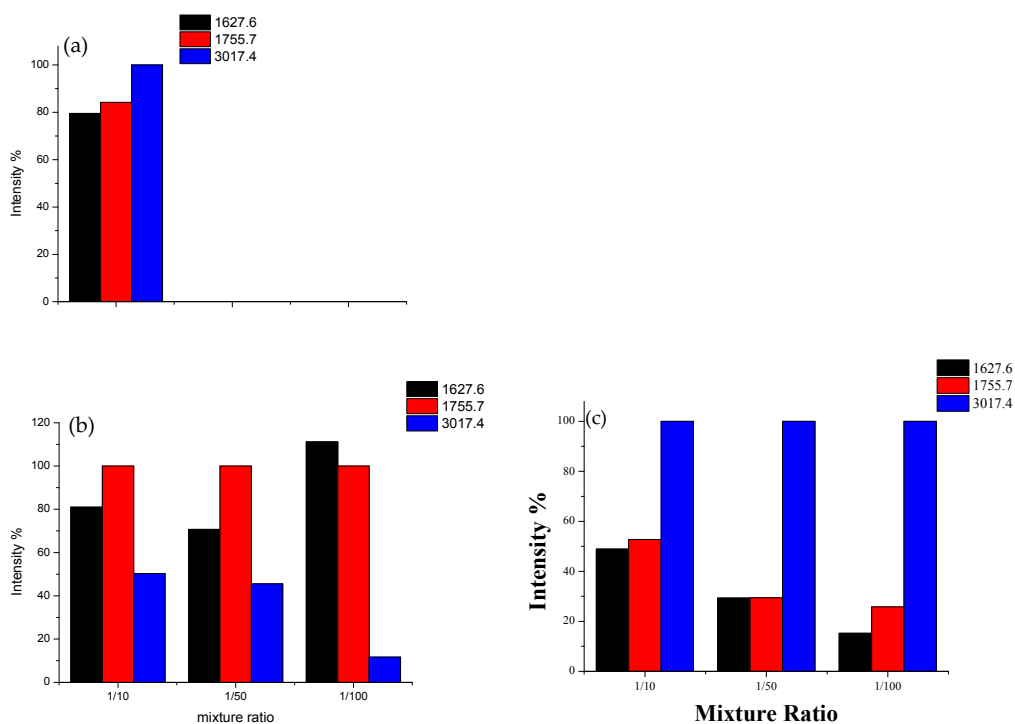


Figure S8. Relative intensity of different signal peaks. (a) tryptic digest of ASF following deglycosylation by PNGase F; (b) enriched by MSP@PNAMAm-1 in different mixture; (c) enriched by MSP@PNAMAm-4 in different mixture.

Table S1. List of identified glycoproteins from 5 μ L human serum after solid phase extraction with MSP@PNAMAm after three parallel runs, N# denotes the N-linked glycosylation site.

NO.	Protein	Description	Peptide
1.	Q9UQM7 KCC2A_HUMAN	Calcium/calmodulin-dependent protein	N#FSGGKSGGNK
2.	Q9ULV1 FZD4_HUMAN	Frizzled-4	ISMCQNLGYN#VTK
3.	Q9P2D1 CHD7_HUMAN	Chromodomain-helicase-DNA-binding protein	EN#ATNGVQQLSK EESMEIHATGKHSESNAELGQLYWP#TSTLTTR
4.	Q9P225 DYH2_HUMAN	Dynein	QNN#VSVDSLWFEFIVSTVDDSNLVYPPK
5.	Q9NZR2 LRP1B_HUMAN	lipoprotein	SAEQSCN#SSFFMCKNGR
6.	Q9NUQ2 PLCE_HUMAN	acyltransferase	LYCVYQSMVLEFFEN#YTGVIQILLYGDLPKNKENIYLANHQSTVDWIVADILAIR
7.	Q96RI8 TAAR6_HUMAN	amine-associated receptor	MSSN#SLLVAVQLCYANVN#GSCVKIPFSPGSR
8.	Q96PY0 K1908_HUMAN	Uncharacterized protein	GCGDSGSSGMAQRAQAGSN#QSRGK
9.	Q96MT8 CEP63_HUMAN	Centrosomal protein	AN#DTICANELEIER
10.	Q92752 TENR_HUMAN	Tenascin-R	GTN#ESDSATTQFTTEIDAPK
11.	Q8WXI2 CNKR2_HUMAN	Connector enhancer	TLSHKLN#ASAK
12.	Q8WVX9 FACR1_HUMAN	Fatty acyl-CoA	ASNNALADLVPVDVVVN#MSLAAAWYSGVNRPR
13.	Q8NHS9 SPT22_HUMAN	Spermatogenesis-associated protein	DGNKN#TSLK IPEPPN#LSRKN DGNKN#TSLKTWNK
14.	Q8NF91 SYNE1_HUMAN	Nesprin-1	VSQLSSQYLALSN#LTK
15.	Q8NE71 ABCF1_HUMAN	ATP-binding cassette	AANAENDFSVQAEMSSRQAMLEN#ASDIK
16.	Q8N9W8 FA71D_HUMAN	Protein FAM71D	KN#TSKTTMR FLPLQFVTLVHDAEN#MSLK
17.	Q8N3K9 CMYA5_HUMAN	Cardiomyopathy-associated protein	SNYAQFISN#TSASNADKMVSNKEMPK IEAFVSEIESFFNTIEN#CSKNEKR
18.	Q8JTG9 L_ABLVH	Large structural protein	LLN#YTLGNR VGGLAAQAMISLWLHGEHSESN#RSRK

Table S1. Cont.

NO.	Protein	Description	Peptide
19.	Q8IVL0 NAV3_HUMAN	Neuron navigator	SSPVTVN#QTDK EPTKIGSGRSSPVTVN#QTDK
20.	Q86U42 PABP2_HUMAN	Polyadenylate-binding protein	QMN#MSPPPGNAGPVIMSIEEK
21.	Q6TFL3 CC171_HUMAN	Coiled-coil domain-containing protein	MNLN#TSSNTGDTQR
22.	Q6SW37 EP84_HCMVM	Early phosphoprotein	N#NTRGGGGGGGGGRNSR
23	Q6P1J6 PLB1_HUMAN	Phospholipase B1	VLVNLVDFLN#PTIMR
24	Q2KJY2 KI26B_HUMAN	Kinesin-like protein	EDN#GSEGLTNREGPELPASKMQR CSSGHGSDN#SSVLSGELPPAMGKTALFYHSGGSSGYESVMRDSEATGSASSAQDSTSEN#SSSVGGR
25.	Q16827 PTPRO_HUMAN	Receptor-type tyrosine-protein	QHRTAPYPPQN#ISVR
26.	Q16821 PPR3A_HUMAN	Protein phosphatase 1	EVLDDNANPAHGN#GTVQIPCPSSDQLMAGNLNK
27.	Q14558 KPRA_HUMAN	Phosphoribosyl pyrophosphate synthase-associated protein	N#ATVHPGLELPLMMAK
28	Q14527 HLTF_HUMAN	Helicase-like transcription	AGGVGLN#LSAASR EYNVNDDSMKLGGN#NTSEKADGLSK QICCHTYLLTNAVSSNGPSGN#DTPEELRKK
29	Q13901 CID_HUMAN	Nuclear nucleic acid-binding protein	N#ASKVANKGK
30	Q13023 AKAP6_HUMAN	A-kinase anchor protein	N#GSDSLQRSTSLESWLTSYK TFTGMQNAKQLSLLSHSSIESLSPGGDLFGLGIFKN#GSDSLQR
31.	Q12913 PTPRJ_HUMAN	Receptor-type tyrosine-protein	IHVAGETDSSNLN#VSEPR TNAIQVFDVTAVN#ISATSLTLIWKVSDN#ESSNYTYK
32.	Q12879 NMDE1_HUMAN	Glutamate receptor	INN#STNEGMNVK FVKIN#NSTNEGMNVK KKSPDFN#LTGSQSNMLK
33.	Q06187 BTK_HUMAN	Tyrosine-protein	N#GSLKPGSSHRK EGSMSEDEFIEEAKVMMN#LSHEK

Table S1. Cont.

NO.	Protein	Description	Peptide
34.	P56524 HDAC4_HUMAN	Histone deacetylase 4	ILIVDWDVHHGN#GTQQAFYSDPSVLYMSLHR N#GSLRNADSEIKHSTPSPTR
35.	P49792 RBP2_HUMAN	E3 SUMO-protein	N#VSGISFTENMGSSQKNSGFRR EMLNSVMQLELDYSEGGPLYKN#GSLRNADSEIK
36.	P32004 L1CAM_HUMAN	Neural cell adhesion	HQMAVKTN#GTGR YFCLAANDQNN#VTIMANLKVK
37.	P20936 RASA1_HUMAN	Ras GTPase-activating protein	EPVPMQDQEQVLN#DTVDGKEIYNTIRR
38.	P20592 MX2_HUMAN	Interferon-induced GTP-binding protein	SVMNVVRN#LTYPLK
39.	P20273 CD22_HUMAN	B-cell receptor	RTQSQQGLQEN#SSGQSFVVRNK
40.	P19827 ITIH1_HUMAN	Inter- α -trypsin	DKICDLLVANNHFAHFFAPQN#LTNMNK
41.	P09871 C1S_HUMAN	Complement C1s	VKNYVDWIMKTMQEN#STPR
42.	P05877 ENV_HV1MN	Envelope glycoprotein	N#TTNTNNSANN#NSNSEGTIK N#TTNTN#NSTANN#NSNSEGTIKGEMK
43.	P05155 IC1_HUMAN	C1 inhibitor	VGQLQLSHN#LSLVILVQNLK
44.	P04196 HRG_HUMAN	Histidine-rich glycoprotein	VEN#TTVYYLVLDVQESDCSVLSR
45.	P04114 APOB_HUMAN	Apolipoprotein	SYN#ETKIKFDK LNGESNLRFN#SSYLQGTNQITGR
46.	P02790 HEMO_HUMAN	Hemopexin	SWPAVGN#CSSALR
47.	P02787 TRFE_HUMAN	Serotransferrin	QQQHFLFGSNVTDCSGNFCLFR ILRQQQHFLFGSNVTDCSGNFCLFR
48.	P02749 APOH_HUMAN	β -2-glycoprotein	VYKPSAGN#NSLYR MEILDNN#WTALLELWDERHR ELAVN#KTQLENIQKTGQEMIEGGHYASDN#VTTR
49.	P01876 IGHA1_HUMAN	Ig α -1	LAGKPTHVN#VSVVMAEVDGTCY LSLHRPALEDLLLGSEAN#LTCTLTGLR

Table S1. Cont.

NO.	Protein	Description	Peptide
50	P01871 C1S_HUMAN	Ig mu	YKN#NSDISSTR
51	P01857 IGHG1_HUMAN	Ig γ	EEQYN#STYR EEQYN#STYRVVSVLTVLHQDWLNGK
52	P01024 CO3_HUMAN	Complement C3	TVLTPATNHMGV#VTFIPANR
53	P01023 A2MG_HUMAN	α -2-macroglobulin	VSNQTLSEFTVLQDVPVR
54	P01011 AACT_HUMAN	α -1-antichymotrypsin	TLNQSSDELQLSMGNAMFVKEQLSLDR
55	P01009 A1AT_HUMAN	α -1-antitrypsin	YLGNTAIFFLPDEGK
56	P00738 HPT_HUMAN	Haptoglobin	NLFLN#HSEN#ATAK VVLHPN#YSQVDIGLIK MVSHHN#LTTGATLINEQWLLTTAK GSFPWQAKMVSHHN#LTTGATLINEQWLLTTAK
57	O95714 HERC2_HUMAN	ubiquitin-protein	SLN#VSSSVNQASR DAPHSEGMHLLSGPLSPN#ESFLR
58.	O15297 PPM1D_HUMAN	Protein phosphatase	IHDNLNLSLPIGLVPTN#STNTVMDQK
59	O00141 SGK1_HUMAN	Serine/threonine-protein	RMGLNDFIQKIAN#NSYACK
60	F5HB53 GB_HCMVM	Envelope glycoprotein B	SSLN#LTHNRTK
61	B1NKQ9 RDRP_ROTH7	RNA-directed RNA polymerase	IIRVDGDDNYAVLQFNTEVTKQMVQN#VSNDVR
62	A8MTB9 CEA18_HUMAN	cell adhesion molecule	MN#LSSLAWEQMGRYR VNREGSLIRPTALN#DTGN#YTVR
63.	A4UHQ7 L_EBLV2	RNA-directed RNA polymerase	LLN#YTLENRGLAIPDGVLSLK
64	A1L390 PKHG3_HUMAN	Pleckstrin	NGAGSLRSRHLPSNN#NSSSWLNVK HLPNSNN#NSSSWLNVKGPLSPFNSR

