

Supplementary Materials: Nitrogen Doped Macroporous Carbon as Electrode Materials for High Capacity of Supercapacitor

Yudong Li, Xianzhu Xu, Yanzhen He, Yanqiu Jiang and Kaifeng Lin

Table S1. Element content of C, O, N and BET and PSDs of NMC materials.

	Elements content wt %			BET surface area (m ² ·g ⁻¹)	PSDs (nm)
	C	N	O		
NMC-700	83.1	7.07	2.74	~286	~41
NMC-800	89.3	5.43	2.02	~443	~45
NMC-900	91.2	4.27	1.97	~407	~55
NMC-1000	94.7	2.03	1.43	~129	~50

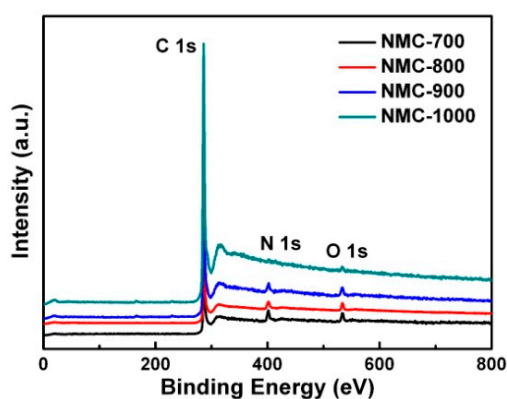


Figure S1. The XPS of NMC in different temperatures.

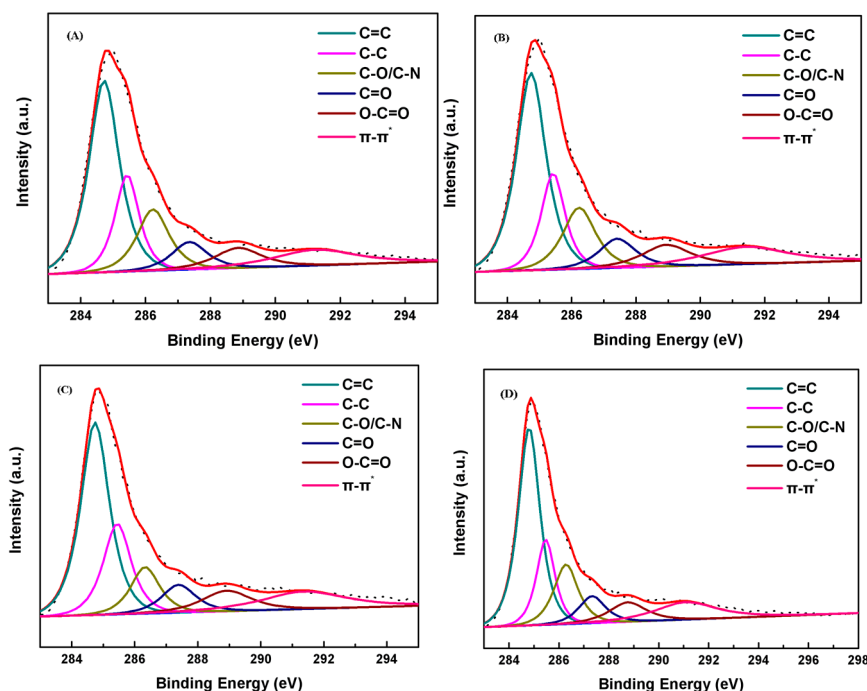


Figure S2. High-resolution C 1s XPS spectra of NMC replicas carbonized in different temperatures (A) NMC-700; (B) NMC-800; (C) NMC-900; (D) NMC-1000. The dotted curve is the experimental points and the red curve is the fitting curve.

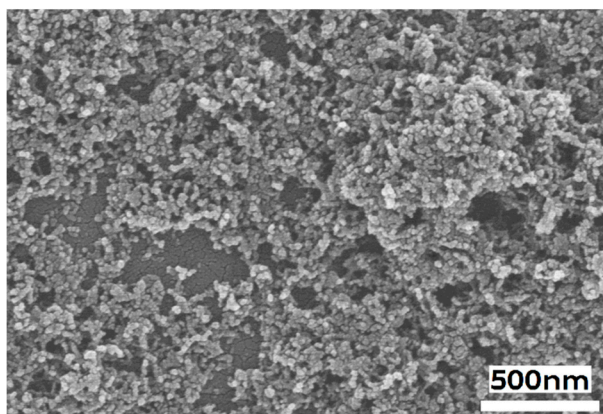


Figure S3. SEM of NMC-800.

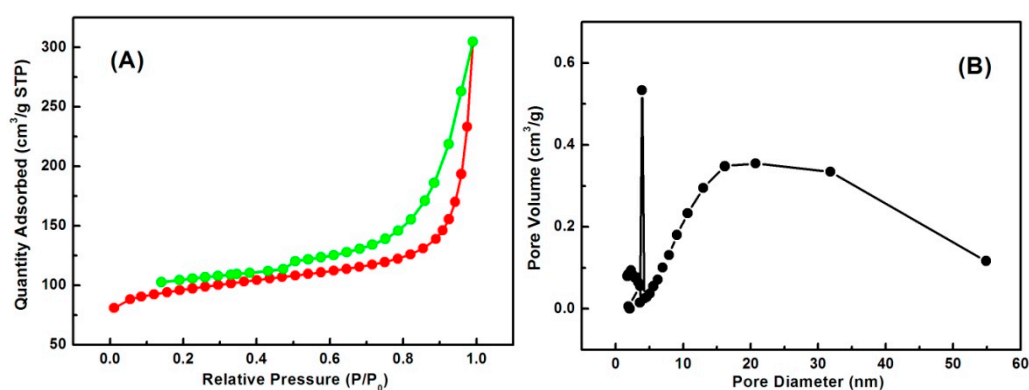


Figure S4. N₂ adsorption-desorption isotherms of Silica beads. (A) The red curve is adsorption isotherm and the green curve is desorption isotherm; the corresponding pore size distribution curves (B).

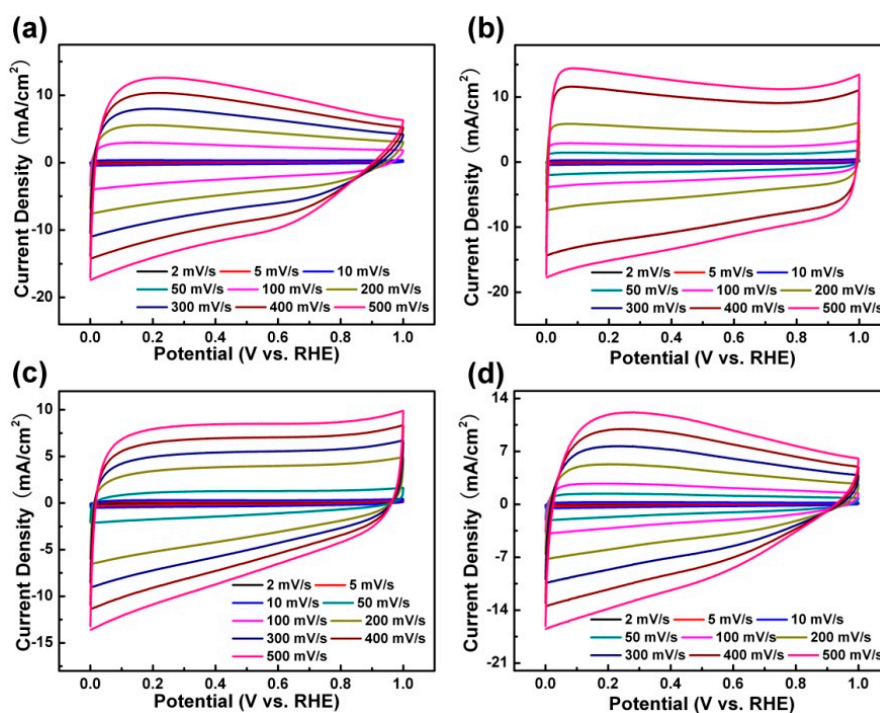


Figure S5. The CV curves of NMC-700 (a); NMC-800 (b); NMC-900 (c); NMC-1000 (d) at different scan rates.

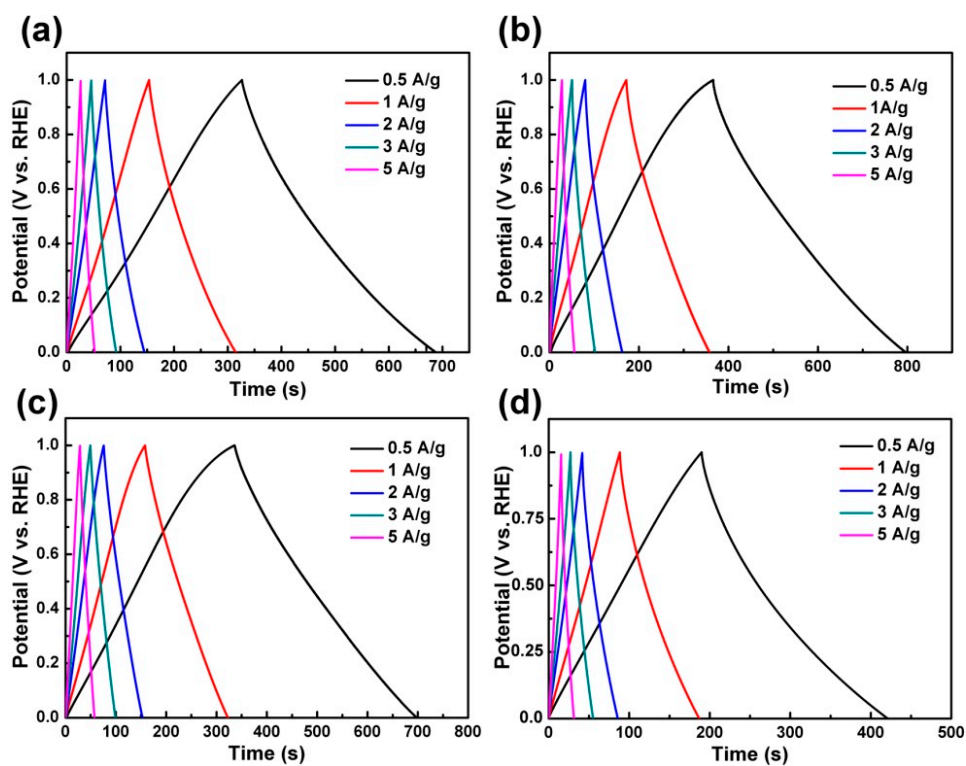


Figure S6. Galvanostatic charge/discharge curves of NMC at different current density. (a) NMC-700; (b) NMC-800; (c) NMC-900; (d) NMC-1000.