

## Supplementary Materials

# An Asymmetrical Glycerol Diether Bolalipid with Protonable Phosphodimethylethanolamine Headgroup: The Impact of pH on Aggregation Behavior and Miscibility with DPPC

Thomas Markowski <sup>1,†</sup>, Sindy Müller <sup>2,†</sup>, Bodo Dobner <sup>1</sup>, Annette Meister <sup>3,4</sup>, Alfred Blume <sup>3</sup> and Simon Drescher <sup>2,\*</sup>

<sup>1</sup> Institute of Pharmacy—Biochemical Pharmacy, Martin Luther University (MLU) Halle-Wittenberg, Wolfgang-Langenbeck-Strasse 4, 06120 Halle (Saale), Germany; thomas.markowski@pharmazie.uni-halle.de (T.M.); bodo.dobner@pharmazie.uni-halle.de (B.D.)

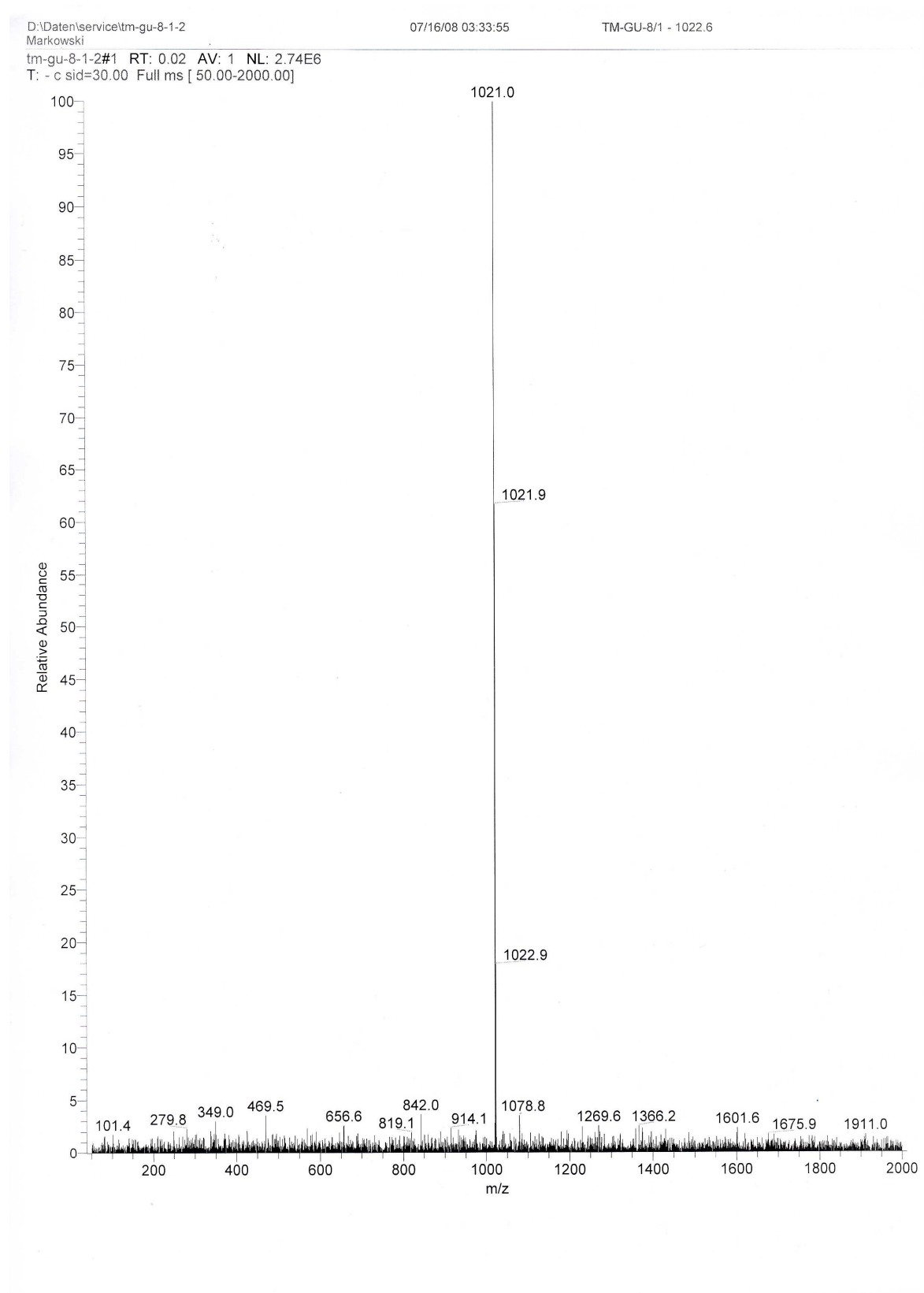
<sup>2</sup> Institute of Pharmacy—Biophysical Pharmacy, MLU Halle-Wittenberg, Wolfgang-Langenbeck-Strasse 4, 06120 Halle (Saale), Germany; sindy.lindner@pharmazie.uni-halle.de

<sup>3</sup> Institute of Chemistry—Biophysical Chemistry, MLU Halle-Wittenberg, von-Danckelmann-Platz 4, 06120 Halle (Saale), Germany; annette.meister@chemie.uni-halle.de (A.M.); alfred.blume@chemie.uni-halle.de (A.B.)

<sup>4</sup> Institute of Biochemistry and Biotechnology, MLU Halle-Wittenberg, Kurt-Mothes-Strasse 3, 06120 Halle (Saale), Germany

\* Correspondence: simon.drescher@pharmazie.uni-halle.de; Tel.: +49-345-55-25196

† Thomas Markowski and Sindy Müller contributed equally to this work.



**Figure S1.** MS data (negative mode) of Me<sub>2</sub>PE-Gly(2C<sub>16</sub>)C<sub>32</sub>-OBn.

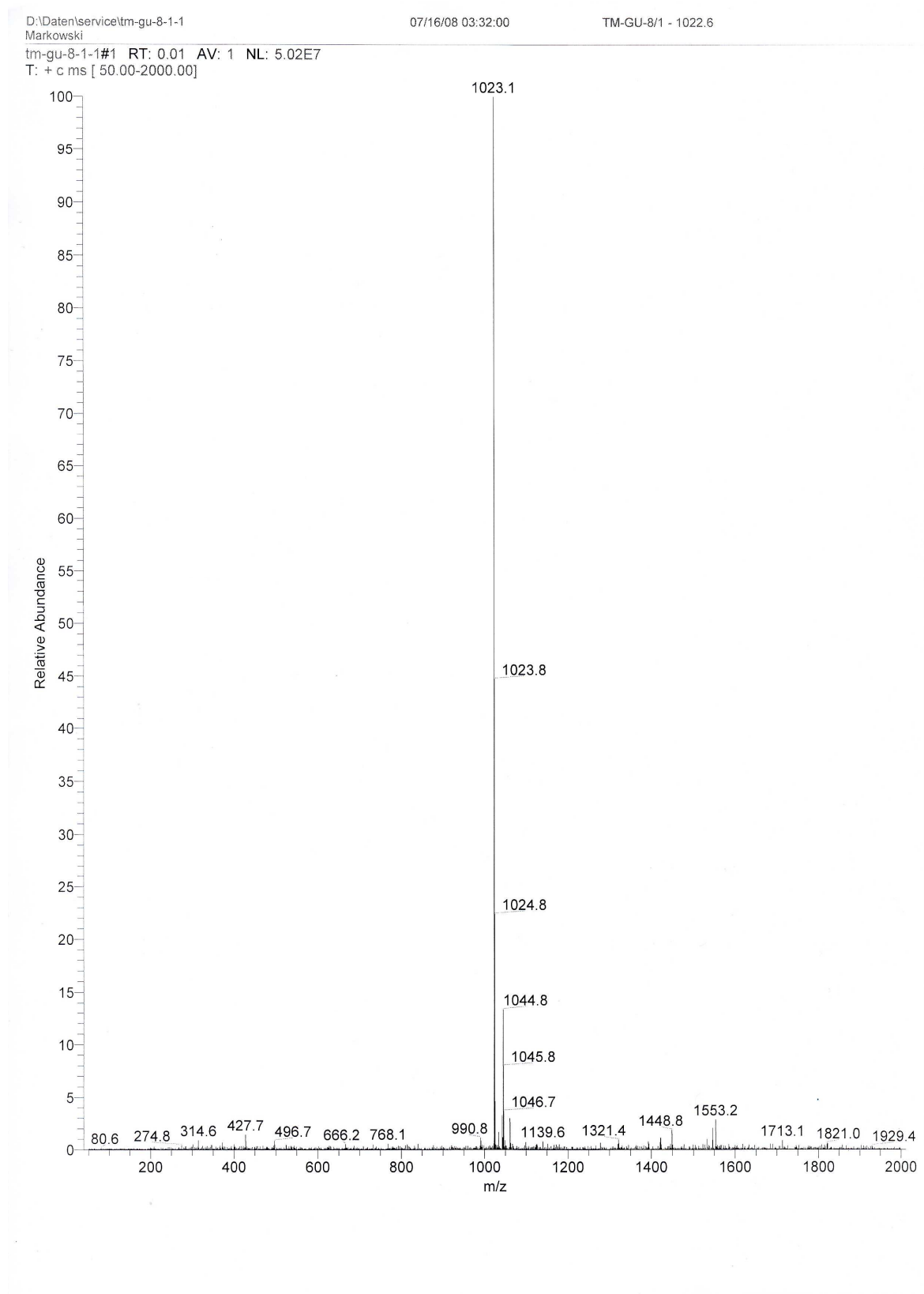


Figure S2. MS data (positive mode) of Me<sub>2</sub>PE-Gly(2C<sub>16</sub>)C<sub>32</sub>-OBn.

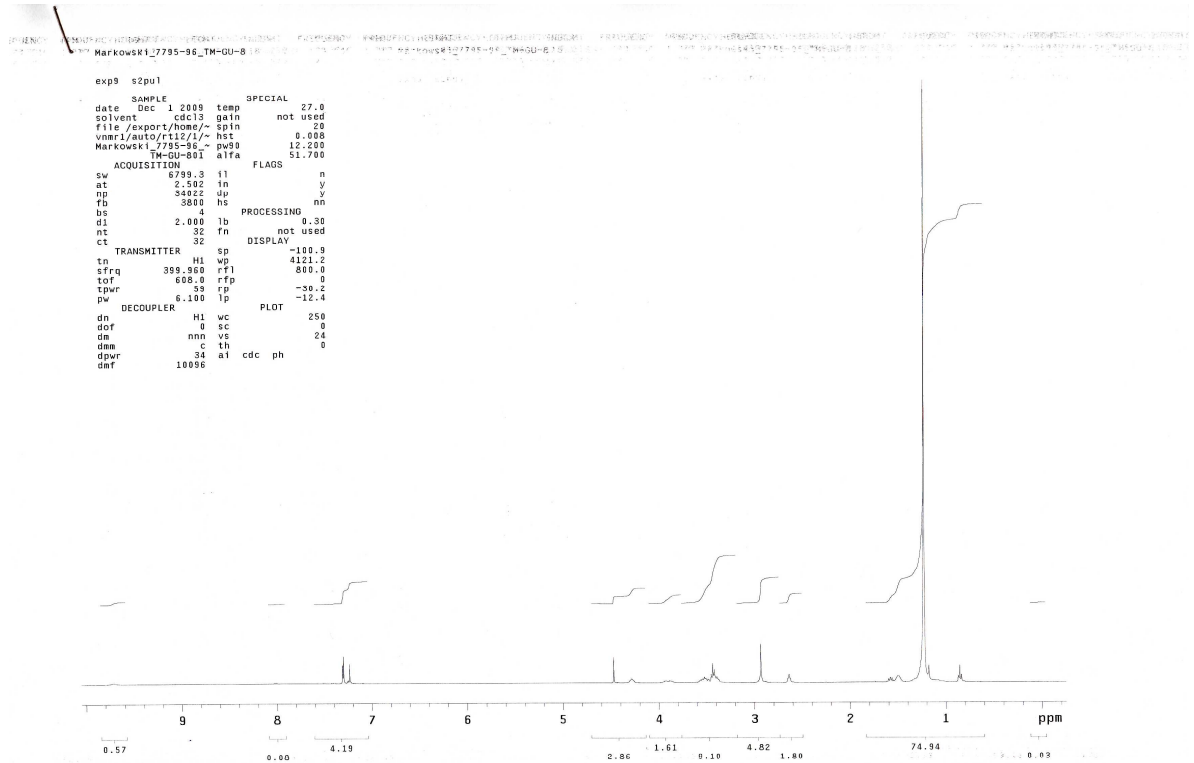


Figure S3. <sup>1</sup>H-NMR data of Me<sub>2</sub>PE-Gly(2C16)C32-OBn.

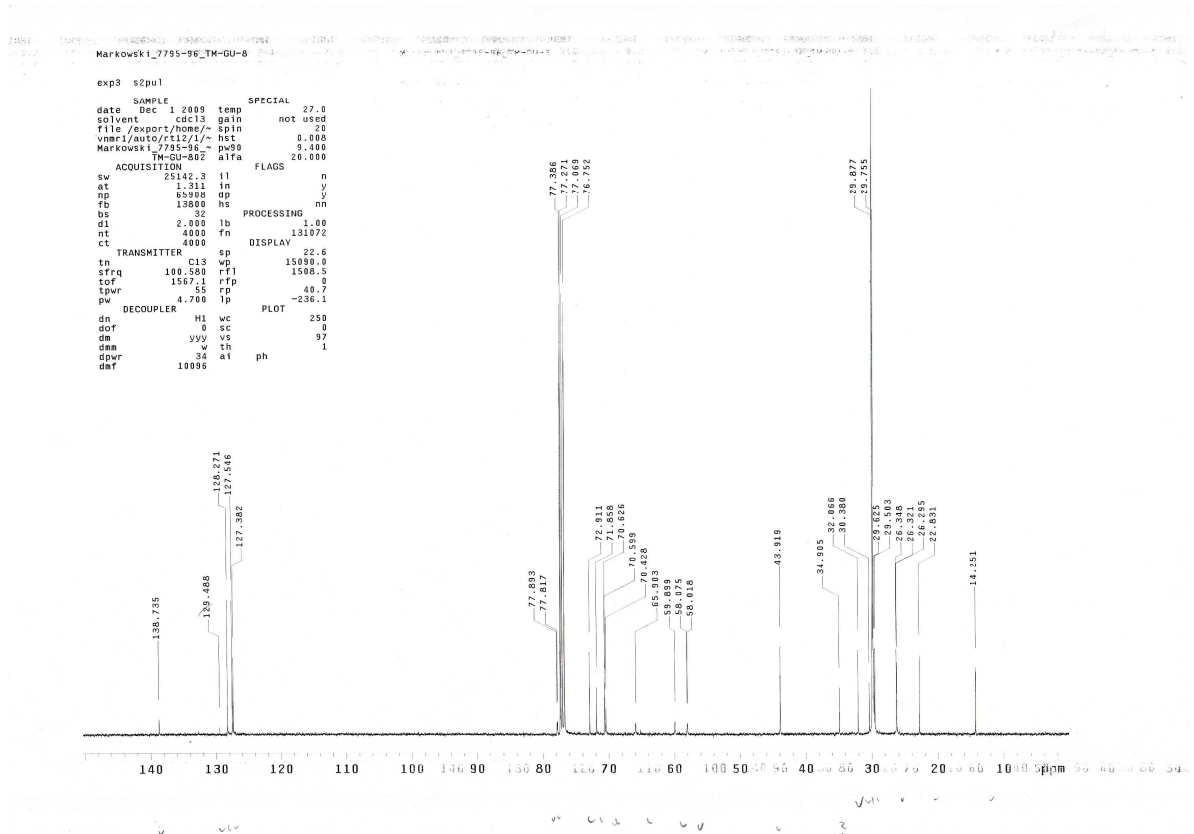


Figure S4. <sup>13</sup>C-NMR data Me<sub>2</sub>PE-Gly(2C16)C32-OBn.

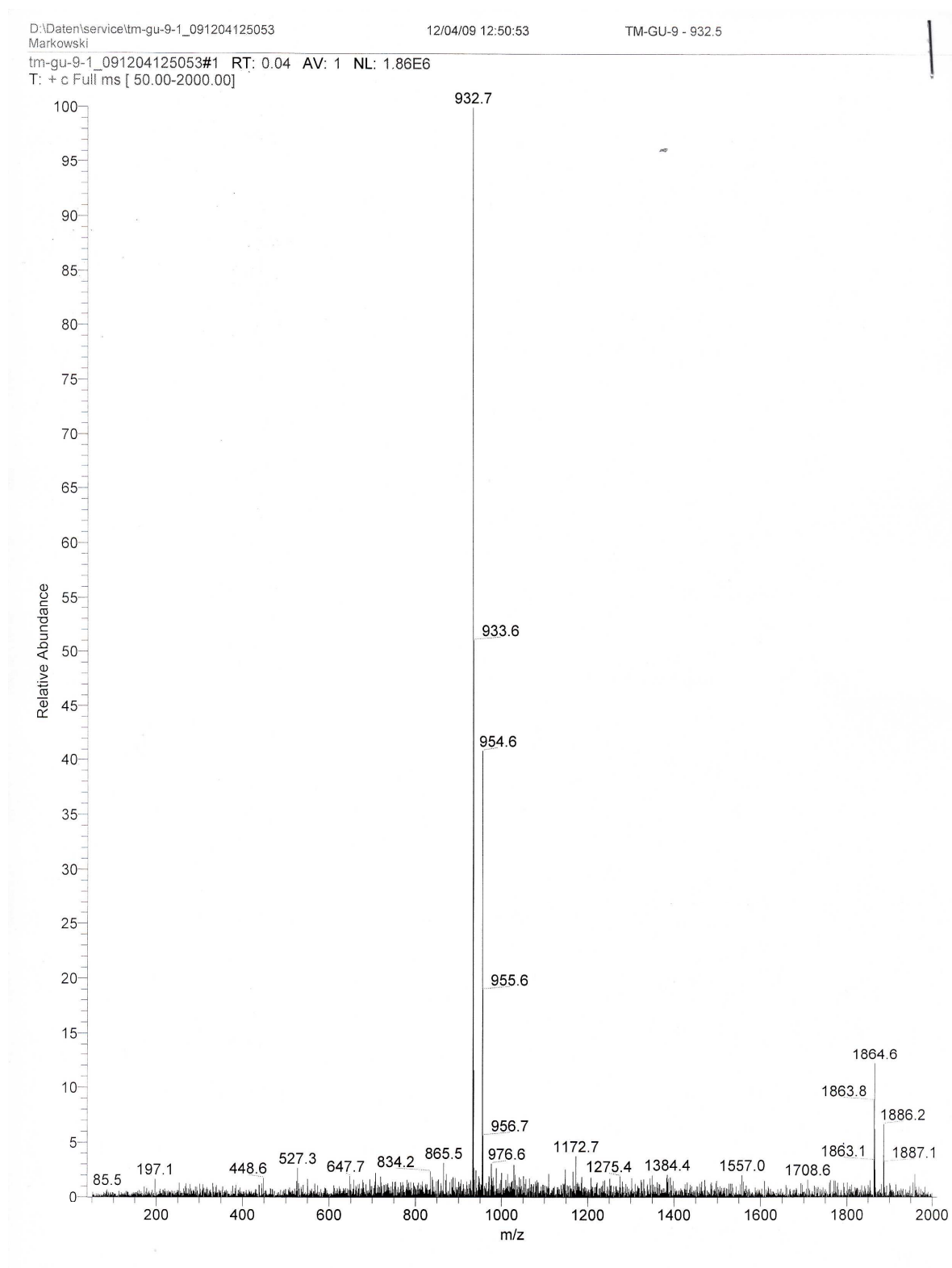


Figure S5. MS data (positive mode) of Me<sub>2</sub>PE-Gly(2C<sub>16</sub>)C<sub>32</sub>-OH.

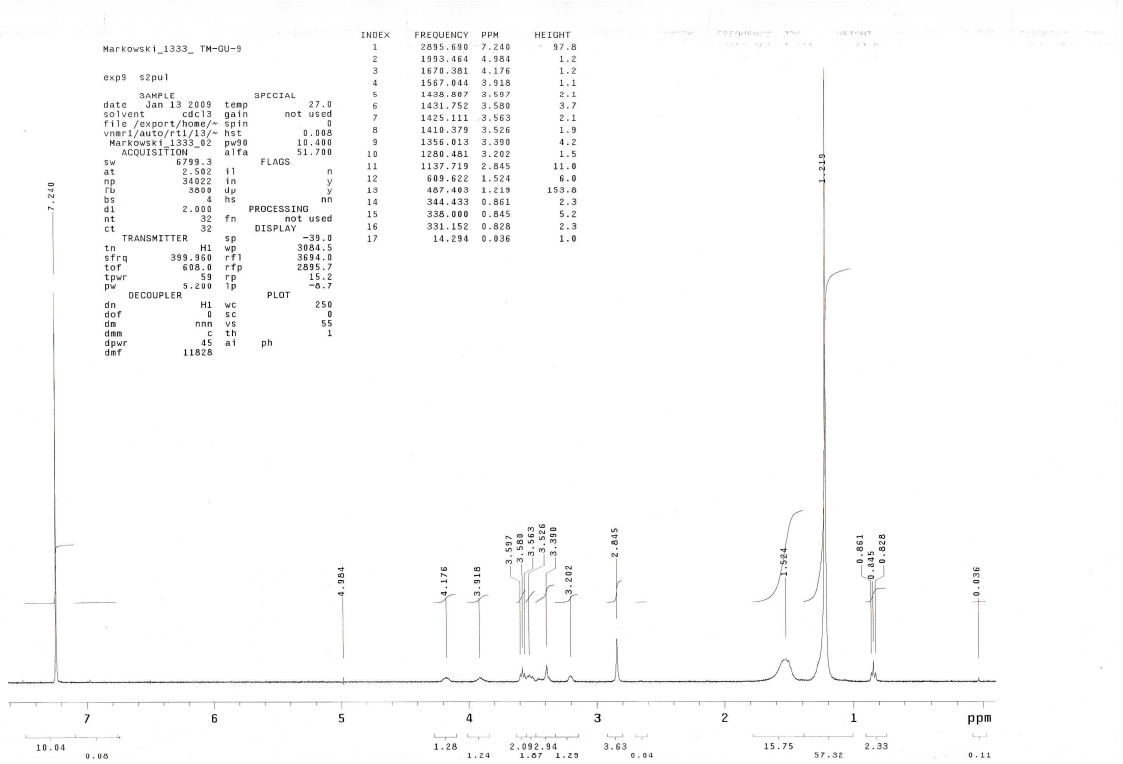


Figure S6. <sup>1</sup>H-NMR data of Me<sub>2</sub>PE-Gly(2C16)C32-OH.

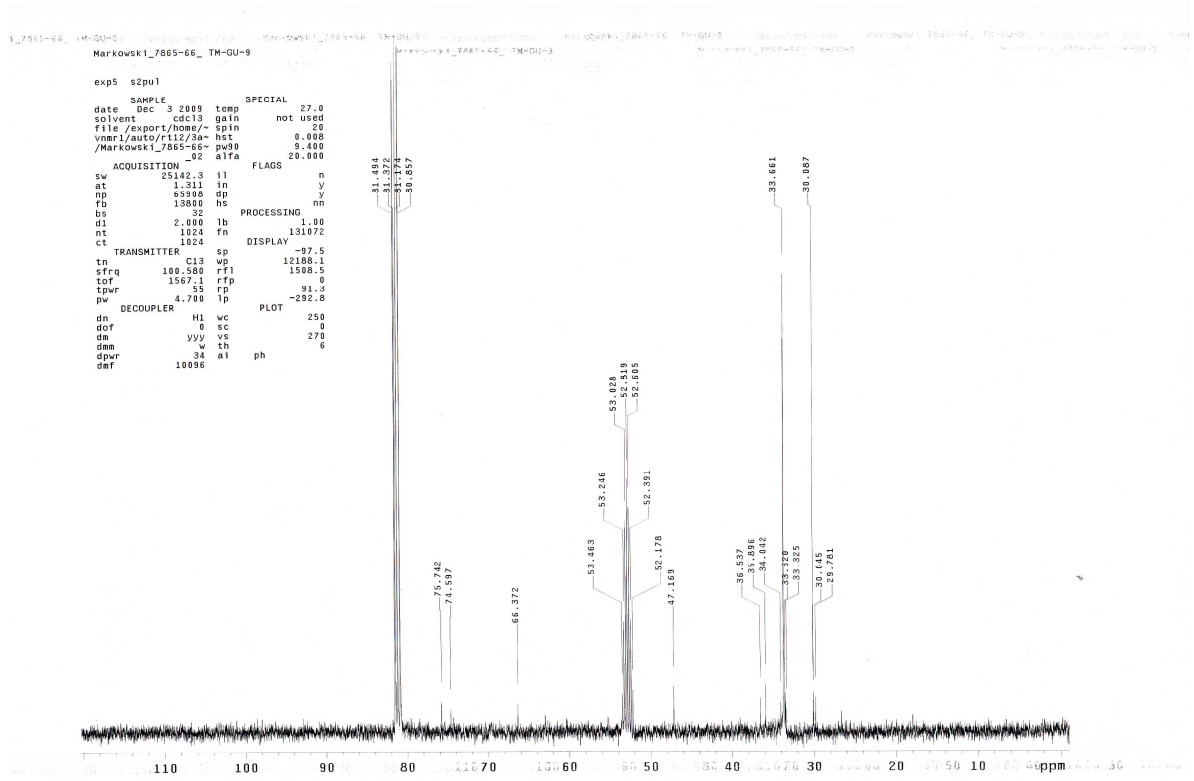


Figure S7. <sup>13</sup>C-NMR data of Me<sub>2</sub>PE-Gly(2C16)C32-OH.