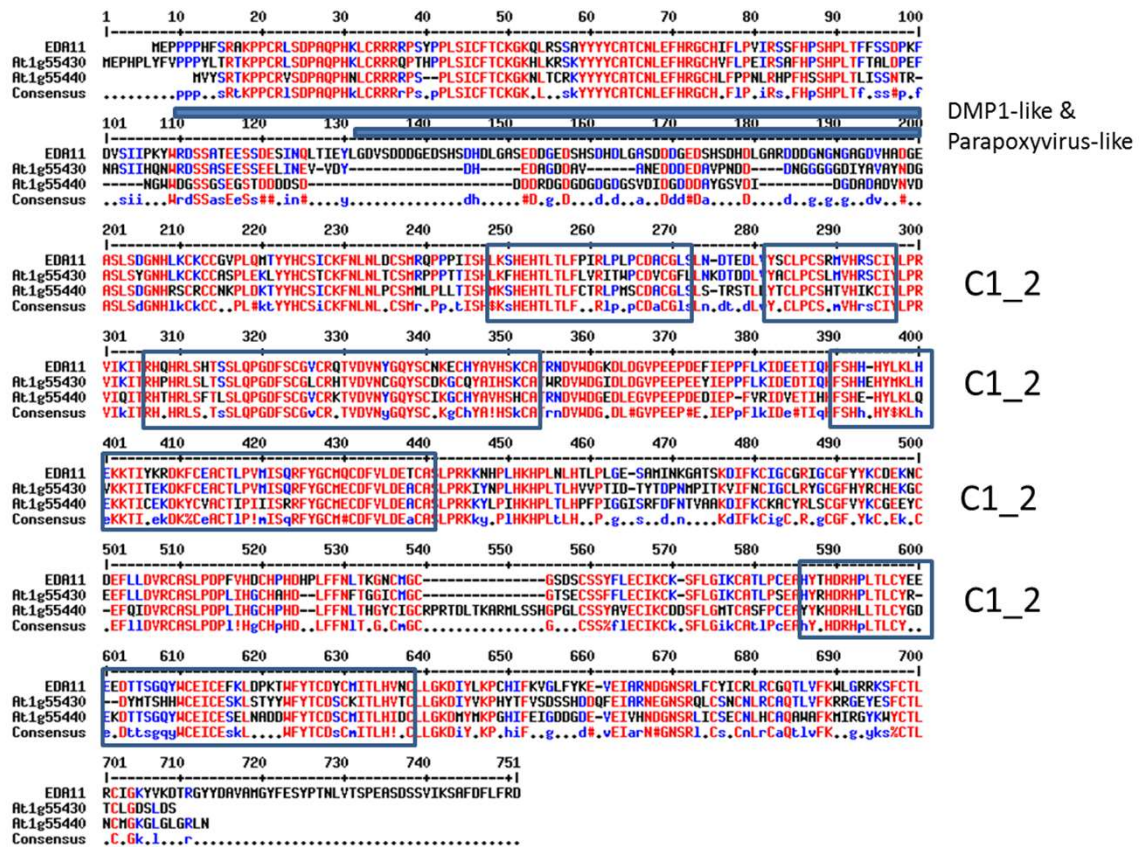
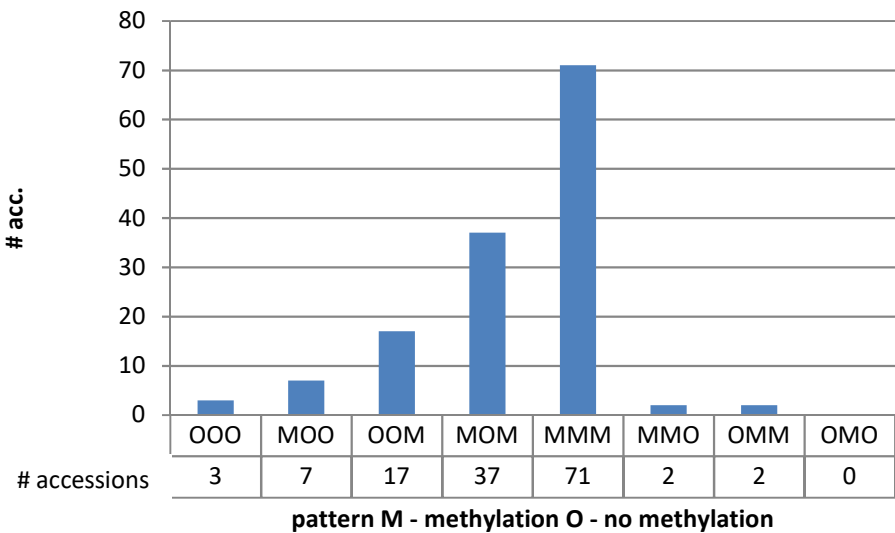
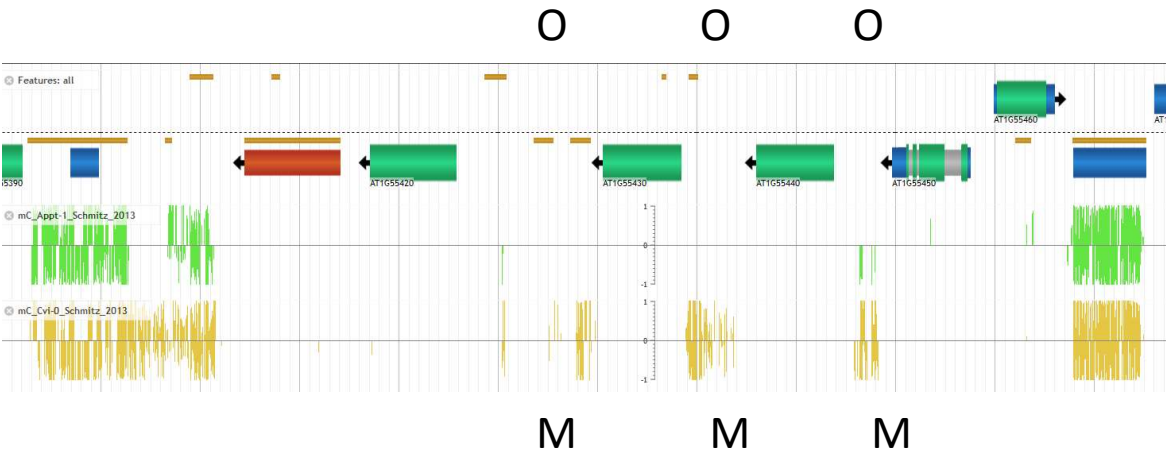


Suppl. Figure 1



Suppl. Figure 2

Methylation pattern in analyzed accessions



Appt-1

En-D

El-0

Sorbo

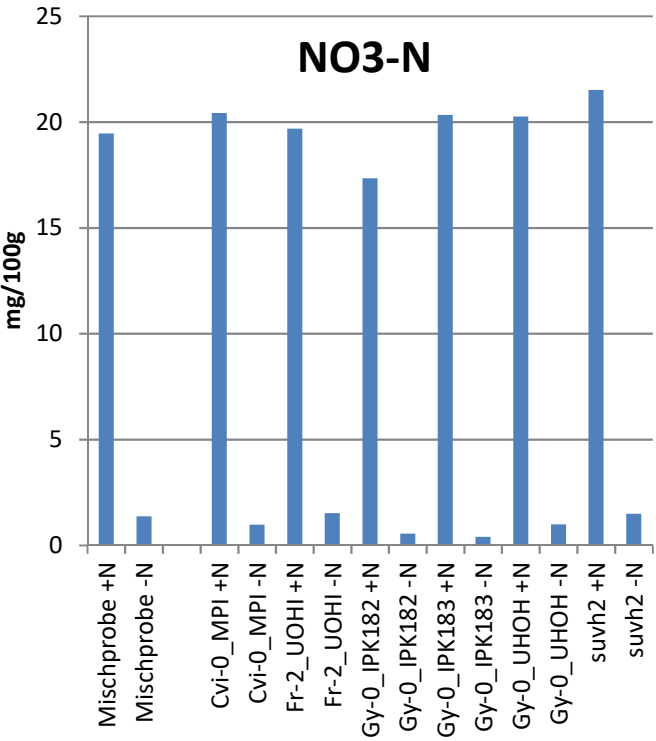
Tamm-2

Ak-1

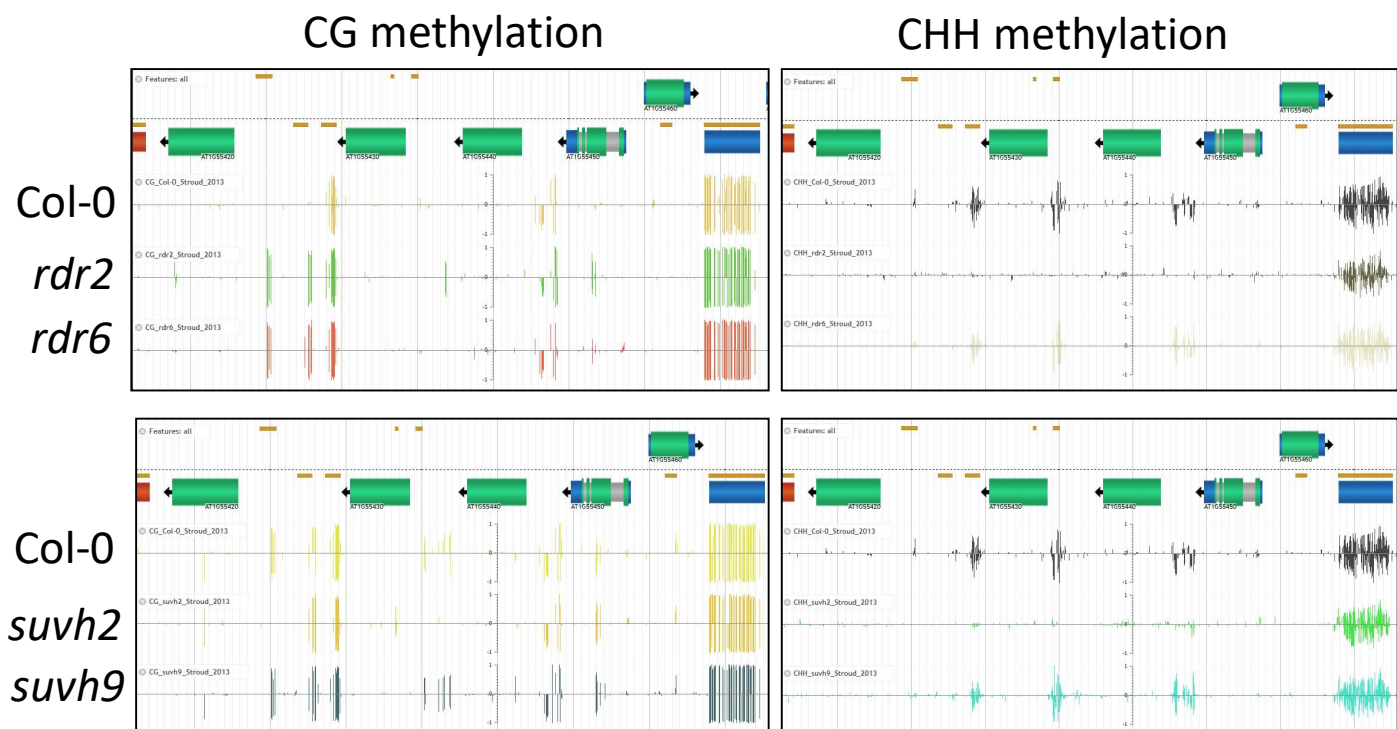
Col-0

Hs-0

Suppl. Figure 3

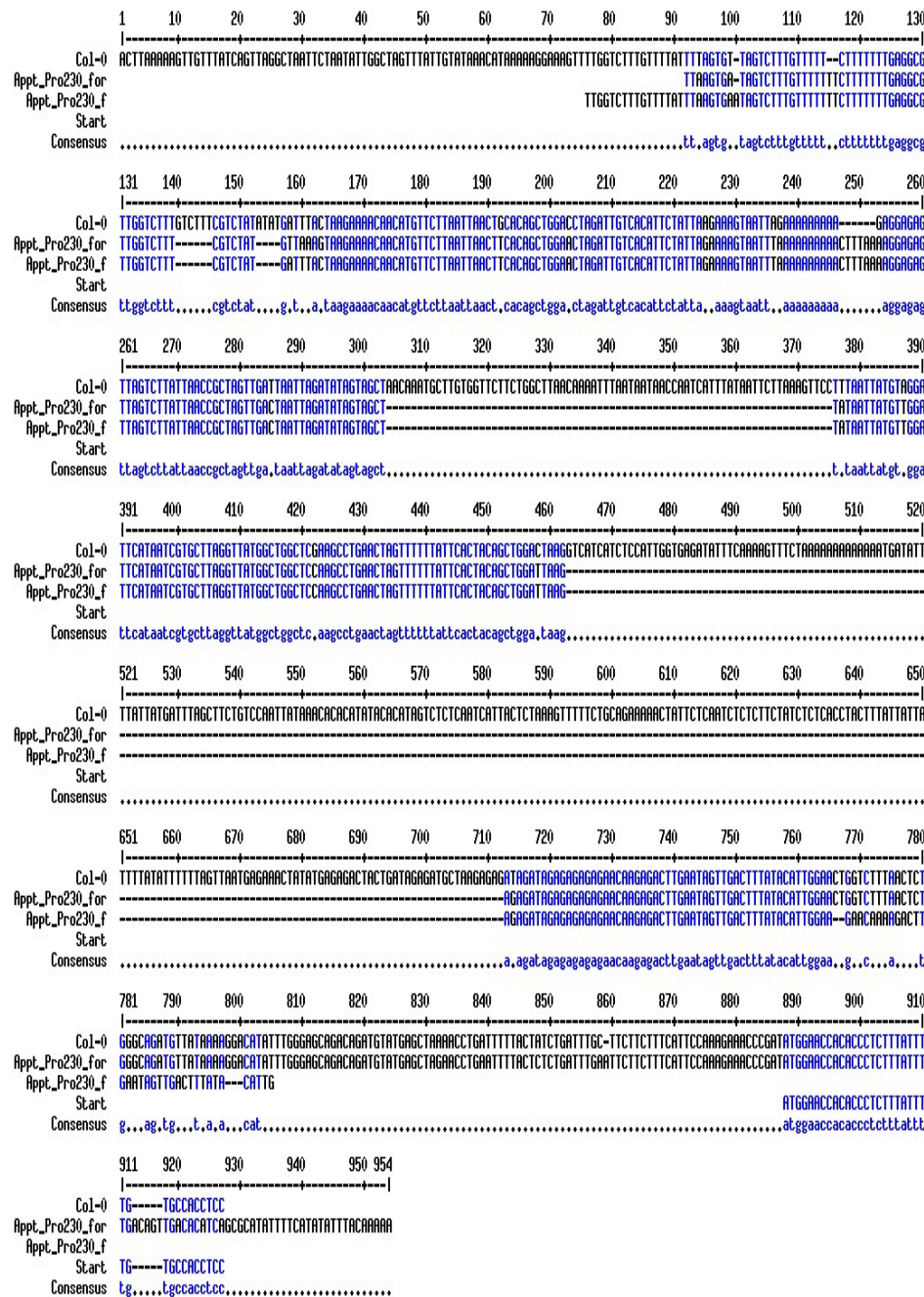


Suppl. Figure 4

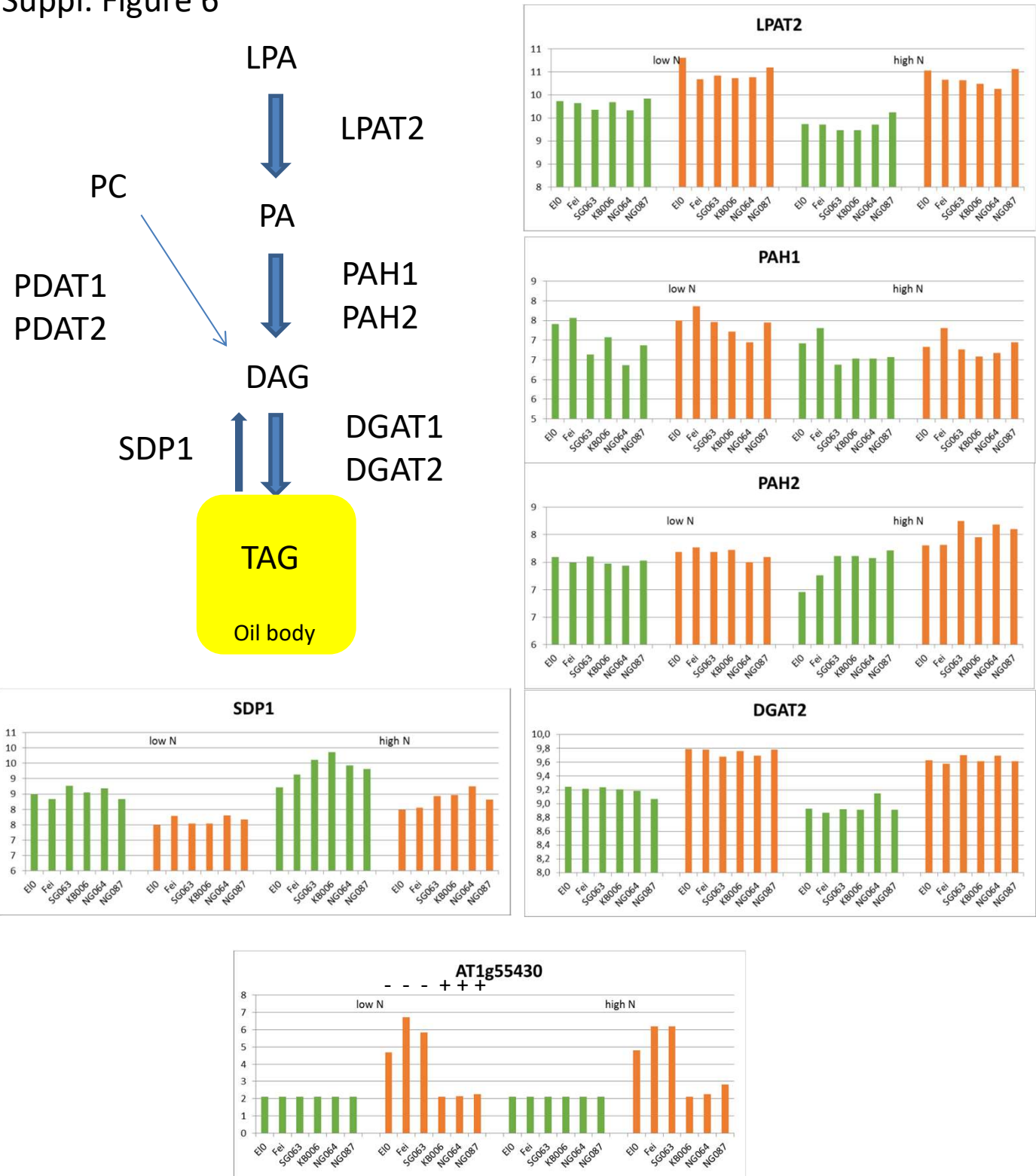


Data from CoGe Database (Lyons & Freeling, 2008) extracted from Stroud et al., 2013
 Displayed are data for *rdr2-2*, *rdr6-15*, *suvh2* (SALK_079574) and *suvh9* (SALK_048033)

Suppl. Figure 5



Suppl. Figure 6



Suppl. Figure 6:
Gene expression related to triacylglycerol synthesis. Under nitrogen deficiency the transcription of genes involved in synthesis of DAG/TAG (LPAT, PAH and DGAT) is enhanced and katbolic SDP1 reduced. Also here based on AT1G4430 transcription level inferior (-) and superior (+) performing lines can be separated. Depicted is the mean of normalized signal intensity of three independent biological replicates. Green: shoot tissue, orange: root tissue under low (0.02 mM N) and high (9 mM N) Harvested from agar plate (Meyer et al., 2019)