

Figure 1. dendrogram of the groups identified based on the clusters using the drought tolerance/susceptibility indices.

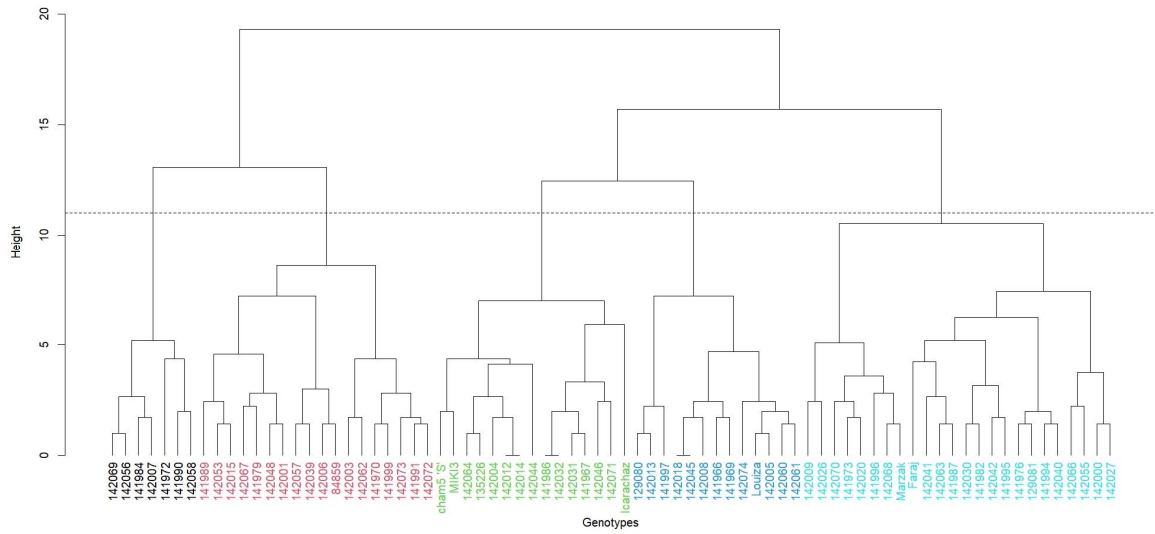


Table 1. List of durum wheat lines evaluated for heat and drought tolerance.

ENTRY/Acc Number	Pedigree/Name	DOI	Remarks	Selection history
84859	Haurani	10.18730/842V5	Parent	-
129080 (Cham 1)	Cham 1	10.18730/983J3	Check	-
129081	Cham 5	10.18730/983K4	Parent	-
135226	Gidara 2	10.18730/9DS33	Check	-
141966	Cham5*2/T. dicoccoides ICWT 601116	10.18730/9NBGV		2002:10294-3; 2003:20652
141967	Cham5*2/T. dicoccoides ICWT 601116	10.18730/9NBXJ		2002:10294-5; 2003:20654
141969	Cham5*3/T. dicoccoides ICWT 601116	10.18730/9NBN*		2002:10317-1; 2003:20776
141970	Cham5*2/T. dicoccoides ICWT 601116	10.18730/9NBQ\$		2002:10312-2; 2003:20750
141972	Haurani*2/T. urartu ICWT 500530	10.18730/9NBV1		2002:10309-5; 2003:20736
141973	Cham5*2/T. dicoccoides ICWT 601116	10.18730/9NBW2		2002:10294-4; 2003:20653
141976	Cham5*3/T. dicoccoides ICWT 601116	10.18730/9NC39		2002:10284-1; 2003:20595
141979	Cham5*3/T. urartu ICWT 500529	10.18730/9NC7D		2002:10352-4; 2003:20972
141982	Cham5*3/T. urartu ICWT 500529	10.18730/9NCDK		2002:10352-5; 2003:20973
141984	Cham5*3/T. dicoccoides ICWT 601116	10.18730/9NCHQ		2002:10292-4; 2003:20642
141986	Cham5*3/T. dicoccoides ICWT 601116	10.18730/9N CNV		2002:10317-2; 2003:20777
141987	Cham5*3/T. aegilopoides ICWT 500647	10.18730/9NCPW		2002:10334-3; 2003:20872
141989	Cham5*2/T. urartu ICWT 500651	10.18730/9NCSZ		2002:10299-2; 2003:20678

141990	Cham5*3/T. aegilopoides ICWT 500648	10.18730/9NCV~	2002:10286-4; 2003:20609
141991	Cham5*3/T. dicoccoides ICWT 601116	10.18730/9NCX=	2002:10319-2; 2003:20788
141994	Cham5*3/T. aegilopoides ICWT 500647	10.18730/9ND34	2002:10351-4; 2003:20966
141995	Cham5*4/Ae. speltoides ICAG 401293	10.18730/9ND56	2002:10356-2; 2003:20992
141996	Cham5*4/Ae. speltoides ICAG 401293	10.18730/9ND78	2002:10353-3; 2003:20976
141997	Cham5*2/T. aegilopoides ICWT 500647	10.18730/9ND9A	2002:10295-4; 2003:20658
141999	Haurani*2/T. urartu ICWT 500530	10.18730/9NDBC	2002:10280-1; 2003:20573
142000	Cham5*3/T. dicoccoides ICWT 601117	10.18730/9NDCD	2002:10324-4; 2003:20818
142001	Haurani*2/T. urartu ICWT 500530	10.18730/9NDEF	2002:10333-3; 2003:20866
142003	Haurani*2/T. urartu ICWT 500530	10.18730/9NDJK	2002:10309-3; 2003:20734
142004	Cham5*3/T. aegilopoides ICWT 500647	10.18730/9NDKM	2002:10314-5; 2003:20764
142005	Cham5*4/Ae. speltoides ICAG 401293	10.18730/9NDNP	2002:10354-4; 2003:20983
142006	Haurani*2/T. aegilopoides ICWT 500652	10.18730/9NDPQ	2002:10327-1; 2003:20831
142007	Haurani*2/T. urartu ICWT 500516	10.18730/9NDQR	2002:10306-5; 2003:20720
142008	Cham5*3/T. dicoccoides ICWT 601116	10.18730/9NDTV	2002:10319-5; 2003:20791
142009	Cham5*3/T. aegilopoides ICWT 500647	10.18730/9NDVW	2002:10340-5; 2003:20907
142012	Cham5*3/T. aegilopoides ICWT 500647	10.18730/9NE0~	2002:10340-1; 2003:20903
142013	Cham5*3/T. aegilopoides ICWT 500647	10.18730/9NE2=	2002:10348-2; 2003:20948
142014	Cham5*3/T. aegilopoides ICWT 500647	10.18730/9NE40	2002:10339-2; 2003:20898
142015	Cham5*2/T. urartu ICWT 500651	10.18730/9NE62	2002:10299-5; 2003:20681
142018	Cham5*4/Ae. speltoides ICAG 401293	10.18730/9NEB7	2002:10358-1; 2003:21002
142020	Cham5*3/T. aegilopoides ICWT 500647	10.18730/9NEEA	2002:10334-4; 2003:20873
142026	Cham5*3/T. urartu ICWT 500649	10.18730/9NESN	2002:10301-4; 2003:20691
142027	Cham5*3/T. urartu ICWT 500651	10.18730/9NEVQ	2002:10287-3; 2003:20613
142030	Cham5*3/T. aegilopoides ICWT 500647	10.18730/9NF1X	2002:10334-5; 2003:20874
142031	Cham5*3/T. aegilopoides ICWT 500647	10.18730/9NF2Y	2002:10335-1; 2003:20875
142032	Cham5*3/T. aegilopoides ICWT 500647	10.18730/9NF4*	2002:10337-5; 2003:20890
142039	Cham5*3/T. dicoccoides ICWT 601116	10.18730/9NFH8	2002:10323-4; 2003:20812

142040	Cham5*3/T. dicoccoides ICWT 601116	10.18730/9NFIJ9	2002:10323-4; 2003:20756
142041	Cham5*4/Ae. speltooides ICAG 401293	10.18730/9NFMB	2002:10358-4; 2003:21005
142042	Cham5*2/T. aegilopoides ICWT 500647	10.18730/9NFDP	2002:10295-2; 2003:20656
142044	Cham5*3/T. dicoccoides ICWT 601117	10.18730/9NFSG	2002:10325-5; 2003:20824
142045	Cham5*3/T. urartu ICWT 500649	10.18730/9NFVJ	2002:10301-5; 2003:20692
142046	Cham5*2/T. aegilopoides ICWT 500647	10.18730/9NFXM	2002:10367-3; 2003:21053
142048	Cham5*3/T. aegilopoides ICWT 500647	10.18730/9NGOQ	2002:10342-2; 2003:20915
142053	Cham5*2/T. dicoccoides ICWT 601116	10.18730/9NGA~	2002:10364-5; 2003:21039
142055	Cham5*4/Ae. speltooides ICAG 401294	10.18730/9NGDU	2002:10361-3; 2003:21020
142056	Haurani*2/T. urartu ICWT 500516	10.18730/9NGG2	2002:10306-4; 2003:20719
142057	Cham5*3/T. aegilopoides ICWT 500647	10.18730/9NGJ4	2002:10347-5; 2003:20945
142058	Cham5*2/T. urartu ICWT 500649	10.18730/9NGK5	2002:10302-2; 2003:20695
142060	Cham5*3/T. aegilopoides ICWT 500647	10.18730/9NGRA	2002:10346-4; 2003:20939
142061	Cham5*3/T. aegilopoides ICWT 500647	10.18730/9NGSB	2002:10351-2; 2003:20964
142062	Haurani*3/T. dicoccoides ICWT 601116	10.18730/9NGVD	2002:10279-5; 2003:20571
142063	Cham5*3/T. dicoccoides ICWT 601116	10.18730/9NGWE	2002:10321-3; 2003:20800
142064	Haurani*2/T. aegilopoides ICWT 500652	10.18730/9NGZH	2002:10327-2; 2003:20832
142066	Cham5*3/T. aegilopoides ICWT 500647	10.18730/9NH3N	2002:10348-3; 2003:20949
142067	Cham5*3/T. dicoccoides ICWT 601116	10.18730/9NH5Q	2002:10323-3; 2003:20811
142068	Cham5*3/T. aegilopoides ICWT 500647	10.18730/9NH7S	2002:10342-3; 2003:20817
142069	Cham5*3/T. aegilopoides ICWT 500647	10.18730/9NH8T	2002:10315-2; 2003:20766
142070	Cham5*3/T. aegilopoides ICWT 500647	10.18730/9NHAW	2002:10315-5; 2003:20769
142071	Cham5*3/T. urartu ICWT 500649	10.18730/9NHCY	2002:10288-4; 2003:20620
142072	Cham5*4/Ae. speltooides ICAG 401293	10.18730/9NHDZ	2002:10353-5; 2003:20978
142073	Cham5*2/T. dicoccoides ICWT 601116	10.18730/9NHE*	2002:10312-4; 2003:20752
142074	Cham5*3/T. dicoccoides ICWT 601116	10.18730/9NHG\$	2002:10282-5; 2003:20588
cham5 'S'	-	-	Check -
Faraj	F413J.S/3/Arthur71/Lahn //Blk2/Lahn/4/Quarmal	-	Check -
Icarachaz	Stj3//Bcr/Lks4/3/Ter3	-	Check -

Louiza	Rascon_39/Tilo1	-	Check	-
Marzak	-	-	Check	-
MIKI3	Stj3//Bcr/Lks4	-	Check	-

Table 2. List of the durum wheat lines selected for drought tolerance based on the mean score index (MSI).

ENTRY	TSIR_GY	TSRF_GY	S_TOL	S_MP	S_DTI	S_DSI	S_MsSTI	MSI
142074	7002	4623	4	10	10	8	10	9.5
141973	5859	4168	8	8	9	9	9	8.75
141969	6333	3863	4	9	10	5	9	8.25
141966	6223	3852	4	8	9	6	9	8
142026	6659	4773	8	10	10	9	10	9.75
141996	5475	4005	9	6	8	10	8	8
142005	6128	3993	5	9	9	7	9	8.5
142009	5874	4478	10	9	10	10	10	9.75
142013	7567	4401	1	10	10	4	10	8.5
142061	6283	4261	6	9	9	8	10	9
142070	5963	4184	8	9	7	9	9	8.5
142068	5605	4060	9	7	7	10	8	8
142060	6172	4047	5	9	9	8	9	8.75
141997	6766	4016	2	10	10	5	10	8.75
142020	5559	4012	9	7	8	9	9	8.25
129080	7618	4392	1	10	10	3	10	8.25
Louiza	6671	4323	5	10	9	7	9	8.75
Marzak	5749	4163	9	8	6	10	8	8