

## Supplemental Figures

Dispensing a synthetic green leaf volatile to two plant species in a common garden differentially alters physiological responses and herbivory

Grace E. Freundlich<sup>1</sup>, Maria Shields<sup>1</sup>, Christopher J. Frost<sup>1,2\*</sup>

<sup>1</sup> Department of Biology, University of Louisville, Louisville, KY, USA 40292

<sup>2</sup> Current Affiliation: BIO5 Institute, University of Arizona, Tucson, AZ, USA 85721-0240

\*Corresponding author:

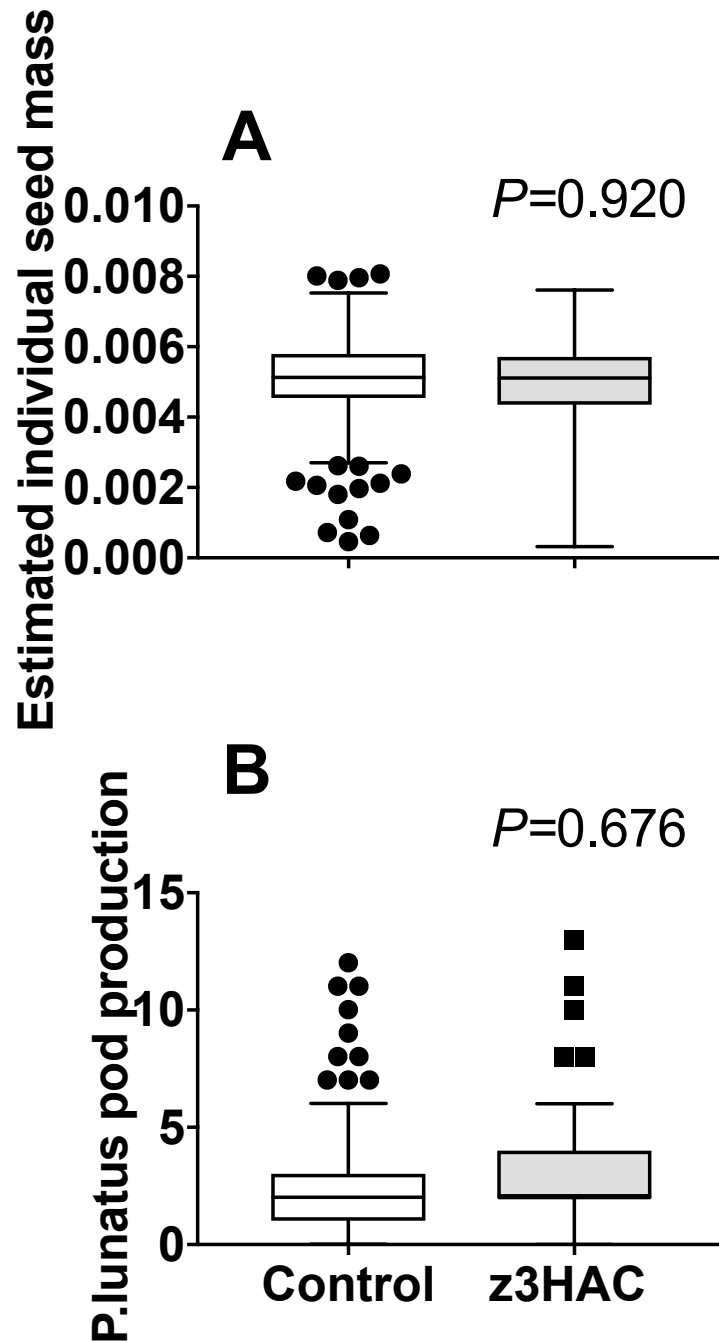
Christopher J. Frost  
BIO5 Institute  
University of Arizona  
Tucson, AZ 85721-0240  
Email: [jasmonate@gmail.com](mailto:jasmonate@gmail.com)



**Supplemental Figure 1.** Aerial view of the field site within the Blackacre Community Garden. The research area is outlined and the original picture was acquired from Google Earth.



**Supplemental Figure 2.** Volatile administration setup. Each 2mL glass vial was inverted and supported by wire stands to prevent rain water accumulation. Additionally, each vial was wrapped in aluminum foil to prevent photodegradation.



**Supplemental Figure 3.** Calculated individual seed mass for *C.annuum* (A) and total pod production for *P.lunatus* (B). Box plots represent the raw data ranging from the upper to the lower quartiles and the median. White boxes represent control plants; gray boxes represent plants treated with z3HAC. Error bars represent the 5% and 95% of the data, and individual dots are observations that fell outside of those parameters. *P*-values represent Tukey's HSD comparisons.