

Table S1. Different macro and micronutrient concentrations (pre-planting) at USSC and EREC locations.

| | USSC | EREC |
|--------------------------------------|------|------|
| pH | 6.2 | 6.6 |
| Pm ₃ (g m ⁻³) | 102 | 244 |
| K (g m ⁻³) | 68 | 180 |
| Ca (g m ⁻³) | 5031 | 8284 |
| Mg (g m ⁻³) | 615 | 1116 |
| Si (g m ⁻³) | 105 | 56 |

Pm₃ – Mehlich 3 extracted phosphorous, K – potassium,

Ca – calcium, Mg – magnesium, and Si – silicon.

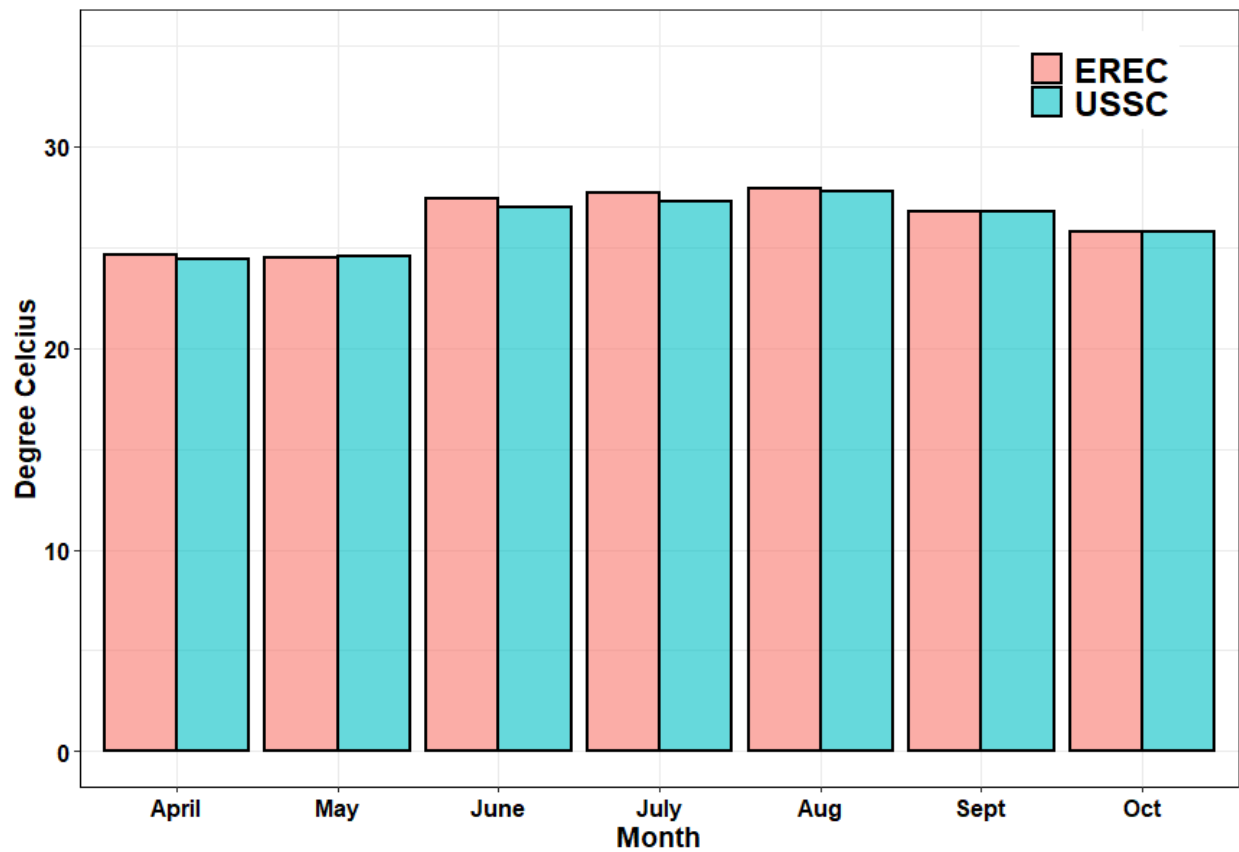


Figure S1. Monthly average air temperature during the growing season in 2020 at USSC and EREC locations.

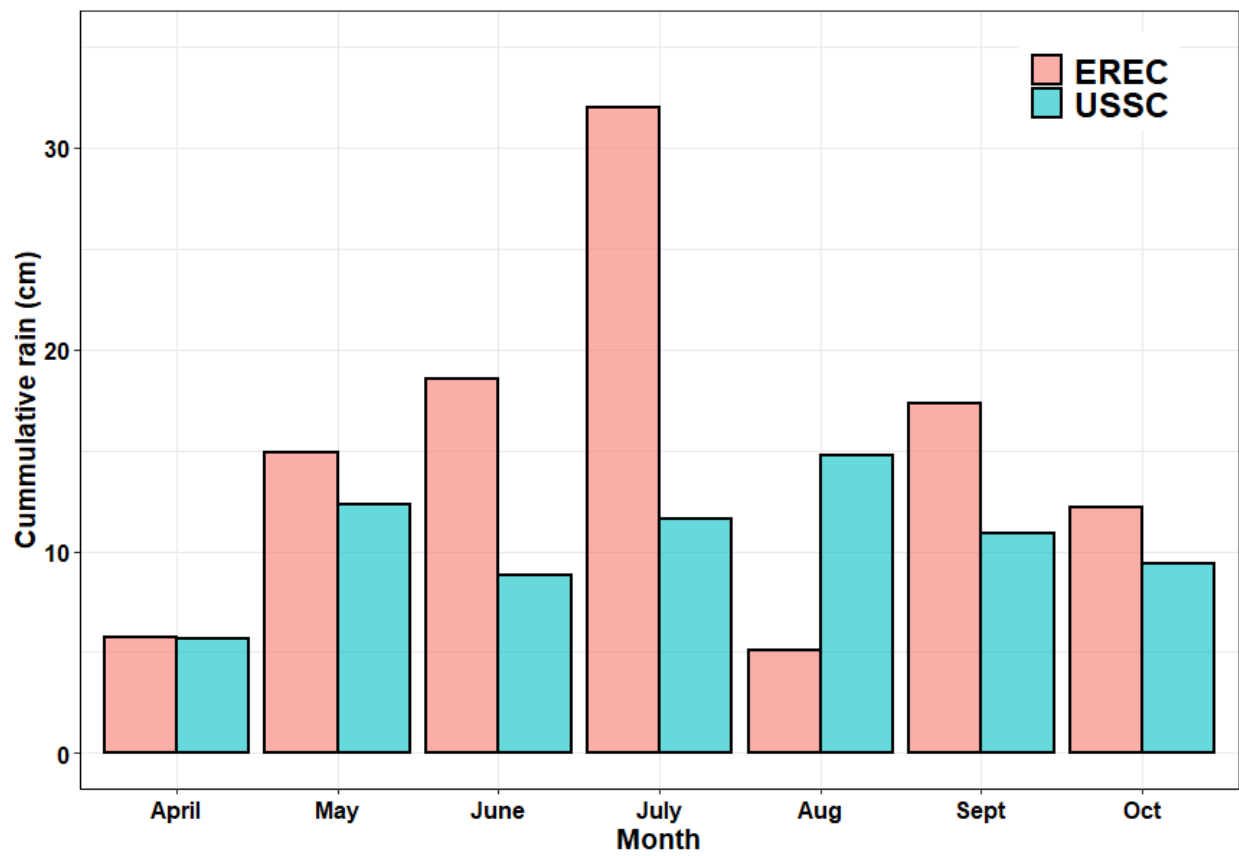


Figure S2. Monthly cumulative rainfall during the growing season in 2020 at USSC and EREC locations .