



Article

Short-Term Effect of Biochar on Soil Organic Carbon Improvement and Nitrous Oxide Emission Reduction According to Different Soil Characteristics in Agricultural Land: A Laboratory Experiment

Jong-Mun Lee ¹, Do-Gyun Park ^{1,2}, Seong-Su Kang ¹, Eun-Jung Choi ¹, Hyo-Suk Gwon ¹, Hyoung-Seok Lee ¹ and Sun-Il Lee ^{1,*}

¹ National Institute of Agricultural Sciences, Rural Development Administration, Wanju 55365, Korea

² Department of Bio-Environmental Chemistry, Chungnam National University, Daejeon 34134, Korea

* Correspondence: silee83@korea.kr; Tel.: +82-632-382-495; Fax: +82-632-383-823

Abstract: Biochar application has been considered as a promising solution to address the effects of modern agriculture on climate change. However, there is a lack of research on the biochar application of greenhouse gas emissions based on poor soils in Korean agricultural land. Therefore, this study aimed to evaluate the effects of biochar application according to different soil characteristics on soil organic carbon (SOC) improvement and greenhouse gas reduction. The incubation experiments were conducted for 49 days and used different feedstock (barley straw and poultry manure) and biochar application rates (0, 5, 10, and 20-ton ha⁻¹) in four soil characteristics (upland, U; greenhouse, G; converted land, C; reclaimed land, R). The results of this study showed that the SOC increased significantly in all soils after biochar application. The increasing SOC rate was the highest in poor soil. Biochar 20-ton ha⁻¹ treatment significantly reduced N₂O emissions by 33.2% compared with the control. Barley straw biochar significantly reduced N₂O emissions from all soils. Barley straw biochar decreased approximately 74.5% of N₂O emissions compared with poultry manure biochar. Poultry manure biochar improved SOC and reduced N₂O emissions in poor soil. However, in poultry manure biochar treatment in U and G soil, N₂O emissions increased. In conclusion, barley straw biochar application was found to suppress N₂O emissions and improve the SOC in all soil characteristics of agricultural land. In addition, the soil carbon storage effect and N₂O reduction effect of biochar were the highest in poor soil. Thus, the biochar application can be a potential agricultural practice for improving soil quality and decreasing N₂O emissions in domestic agricultural soil.

Keywords: biochar; converted land soil; nitrous oxide; reclaimed land soil; soil organic carbon



Citation: Lee, J.-M.; Park, D.-G.; Kang, S.-S.; Choi, E.-J.; Gwon, H.-S.; Lee, H.-S.; Lee, S.-I. Short-Term Effect of Biochar on Soil Organic Carbon Improvement and Nitrous Oxide Emission Reduction According to Different Soil Characteristics in Agricultural Land: A Laboratory Experiment. *Agronomy* **2022**, *12*, 1879. <https://doi.org/10.3390/agronomy12081879>

Academic Editors: Xiaoyun Xu and Fan Yang

Received: 7 July 2022

Accepted: 8 August 2022

Published: 10 August 2022

Publisher's Note: MDPI stays neutral with regard to jurisdictional claims in published maps and institutional affiliations.



Copyright: © 2022 by the authors. Licensee MDPI, Basel, Switzerland. This article is an open access article distributed under the terms and conditions of the Creative Commons Attribution (CC BY) license (<https://creativecommons.org/licenses/by/4.0/>).

1. Introduction

Climate change has had a decisive impact on global food production and greenhouse gas emissions scenarios, including disturbing the soil, the largest carbon reservoir in the terrestrial ecosystem [1,2]. Historical emissions have raised atmospheric concentrations of GHGs, including carbon dioxide (CO₂), nitrous oxide (N₂O), and methane (CH₄), to unprecedented levels for at least 800,000 years [3]. Among the different sectors that emit greenhouse gases worldwide, agriculture comprises approximately 10–12% of total emissions, with an annual greenhouse gas emission of approximately 5.1–6.1 Pg. [4,5]. Among these GHGs, CH₄ and N₂O, which are mainly emitted from agricultural land, have a global warming potential (GWP) of 28 and 265 folds that of CO₂, respectively, and consequently have a considerably greater effect on global warming [3]. N₂O is a major source of nitrogen oxide (NO), an important ozone depletion agent [6]. Furthermore, the agricultural sector accounts for approximately 60% of global anthropogenic emissions of N₂O [7]. Although N₂O is mainly emitted from uplands, it is also emitted from some rice

fields and can stay in the atmosphere for more than 100 years; therefore, reducing N₂O emissions is important to mitigate climate change [8].

Recently, as part of the response to climate change, research focusing on biochar actively garnered attention in the agricultural sector [5,8,9]. Biochar is a compound word of biomass and charcoal, and it is a solid compound with a high carbon content, manufactured by pyrolyzing biomass in an oxygen-free environment [10]. Biochar is a promising alternative to agricultural productivity and climate change mitigation [11–13]. It has been claimed that biochar has the potential to reduce the impact of agricultural systems on global warming through carbon sequestration and N₂O suppression [13–17]. Particularly, it reportedly has a positive effect on N₂O emission mitigation in agricultural lands, such as paddy fields and uplands using fertilizers [18,19]. Case et al. [5] reported that biochar suppressed cumulative N₂O emission production by 91% in near-saturated, fertile soils. Ginebra et al. [11] reported that N₂O fluxes decreased 23–50% in treatments containing biochar with low mineral N contents and high C stability. Such possible beneficial effects of biochar are a few of the reasons why biochar research is gaining popularity [20].

However, some studies have indicated that the effect of biochar is inconsistent and have reported a neutral or slight increase in N₂O emissions [21–24]. For example, the incorporation of high C/N ratio biochar can suppress N₂O emissions because available soil N is immobilized [25]. Conversely, readily mineralizable N in low C/N ratio biochar can be transformed into mineral N that feeds into nitrification and denitrification processes. as a result, N₂O emissions can increase by heterotrophic denitrification activities [26]. In addition, the biochar application effect can be different in poor soil than that in fertile soil [27]. Moreover, the difference in the effects of biochar application in the soil can depend upon the associated feedstocks [28–30], physicochemical properties [31], pyrolysis temperature [12,32], existing soil features [12,15,33], fertilizer input [18,21]. In previous studies, although the effect of mitigating N₂O emissions varies according to soil fertility, biochar feedstock and input amount, and soil features of the agricultural land [27,34], there are no significant differences between pyrolysis temperature and fertilizer input and N₂O emissions [35]. Thus, it is important to differentiate biochar application by existing soil features.

In the case of cropland in Korea, tidal flats or forests are frequently converted into agricultural land [36,37]. As a result, there are fertile soils and poor soils even on agricultural land. However, research so far has focused on the development of biochar feedstocks to reduce greenhouse gases [28,38–40], the effect of increasing crop growth and yield [41–43], the effects of biochar according to climate zone [13,44], and adsorption of water and soil pollutants [45,46]. Although there have been studies evaluating the effect of biochar on existing fertile farmland [13,14,38,42,47], studies on the effect of biochar on poor soil that can be converted to cropland have been limited. Quantification of nitrous oxide emissions through the application of biochar to soils of different fertility is needed, as applying the same biochar to soils with different characteristics can pose a threat to cropland aimed at mitigating climate change. We hypothesized that applying biochar to agricultural land would have a soil improvement effect on fertile soil and a carbon storage effect on poor soil.

Therefore, this study aimed to analyze the SOC improvement and N₂O emission reduction effects of biochar on different soil characteristics in cropland of Korea. To this end, (1) the change in SOC after biochar application was compared, (2) N₂O emission features according to biochar type and application rate were evaluated, and (3) cumulative N₂O emission features were evaluated quantitatively according to soil characteristics. Our study can provide useful information for mitigating climate change through biochar application in various forms of agricultural soil.

2. Materials and Methods

2.1. Soil and Biochar

The soil used for the incubation experiments was collected from upland (35°00' N, 127°30' E), greenhouses (35°22' N, 126°36' E), converted land (35°49' N, 127°02' E), and

reclaimed land (35°49' N, 126°41' E). The soil obtained from the sites was air-dried at the National Academy of Agricultural Sciences in Wanju-gun, Jeollabuk-do, Republic of Korea, and passed through a 2 mm sieve before being used as a test material. The publicly disclosed chemical properties of the soil are indicated in the table below (Table 1).

Table 1. Chemical properties by soil characteristics in agricultural land.

Type	pH	EC	T-C	T-N	NH ₄ ⁺	NO ₃ ⁻	Av.P ₂ O ₅	Ex. Cation			C.E.C
								K	Ca	Mg	
	1:5	dS/m	g kg ⁻¹	g kg ⁻¹	mg kg ⁻¹	mg kg ⁻¹	mg kg ⁻¹	cmol ⁺ kg ⁻¹			
U	4.8	0.5	14.13	1.40	92.3	260.6	32.0	0.4	2.6	1.2	5.6
G	5.5	4.1	12.05	1.38	289.2	240.2	595.0	0.5	7.5	2.2	14.3
C	6.5	0.3	7.79	0.63	95.3	7.6	160.6	0.2	3.2	1.5	6.7
R	6.7	0.2	4.12	0.57	57.9	2.5	171.7	0.7	1.8	2.2	10.6

U: upland soil, G: greenhouse soil, C: converted land soil, R: reclaimed land soil. EC: electrical conductivity, T-C: total carbon, T-N: total nitrogen, NH₄⁺: ammonium ion, NO₃⁻: nitrates, Av.P₂O₅: available phosphate, C.E.C: cation exchange capacity.

Biochar was made from Barley straw and poultry manure. After undergoing a pre-treatment process, including collection, and drying, biochar was produced at a biochar manufacturing factory in Yesan-gun, Chungcheongnam-do, through TLUD (Top Lit Up Draft) pyrolysis in a carbonization furnace at 500 °C. The pH of the barley straw biochar (BB) was 9.5, T-C content was 253.0 g kg⁻¹, the C/N ratio was 17.3, and the surface area was 6.3-m² g⁻¹. The pH of the poultry manure biochar (PB) was 10.2, T-C content was 376.9 g kg⁻¹, the C/N ratio was 13.8, and the surface area was 7.8-m² g⁻¹ (Table 2).

Table 2. Physicochemical properties of biochar.

Material	pH	T-C	T-N	T-H	C/N Ratio	Surface Area
	(1:10)	(g kg ⁻¹)	(g kg ⁻¹)	(g kg ⁻¹)		(m ² g ⁻¹)
BB	9.5	253.0	14.6	8.2	17.3	6.3
PB	10.2	376.9	27.3	9.4	13.8	7.8

BB: barley straw biochar, PB: poultry manure biochar, pH: hydrogen ion exponent, T-C: total carbon, T-N: total nitrogen, T-H: total hydrogen.

2.2. Incubation Experiments

Experimental treatment areas were classified as upland soil (U), greenhouse soil (G), converted land soil (C), and reclaimed land soil (R), which are types frequently changed to farmland, and each treatment group was treated using two biochar types at 0, 5, 10, and 20-ton ha⁻¹ [48]. Finally, each experimental group was treated for three repetitions adding up to 96 experimental groups (Table 3).

Using the standard amount of fertilizer used on spring cabbage (N-P-K = 32–7.8–19.8 kg 10 a⁻¹), 5.47, 3.53, and 2.54 g urea-soluble phosphorus–potassium chloride were, respectively, added per 10 kg soil, and 42 g mixed livestock manure compost (28% cow manure, 22% pig manure, and 19% chicken manure) was added per 10 kg soil. The fertilizer was applied equally to all agricultural soil characteristics [49]. Biochar was applied to each experimental group by calculating appropriate input for each group. For all experimental groups, soil and materials were added, mixed, and packed in a closed chamber (Ø 9.0 cm, H 12.5 cm). Water holding capacity of 70%, the temperature of 25 °C, and conditions for the highest level of microbial decomposition activity [50] were maintained, and the groups were incubated for 49 days (Table 3).

Table 3. Description of the experimental setup.

Treatments	Soil Characteristics	Biochar Feedstock	Biochar Application Rate	Treatments	Soil Characteristics	Biochar Feedstock	Biochar Application Rate
			(ton ha ⁻¹)				(ton ha ⁻¹)
UB0	Upland	Barley straw	0	UP0	Upland	Poultry manure	0
UB5			5	UP5			5
UB10			10	UP10			10
UB20			20	UP20			20
GB0	Greenhouse	Barley straw	0	GP0	Greenhouse	Poultry manure	0
GB5			5	GP5			5
GB10			10	GP10			10
GB20			20	GP20			20
CB0	Converted land	Barley straw	0	CP0	Converted land	Poultry manure	0
CB5			5	CP5			5
CB10			10	CP10			10
CB20			20	CP20			20
RB0	Reclaimed land	Barley straw	0	RP0	Reclaimed land	Poultry manure	0
RB5			5	RP5			5
RB10			10	RP10			10
RB20			20	RP20			20

2.3. Gas Samples and Measurements

Gas samples and measurements used a protocol similar to that described by Maucieri et al. [51]. The N₂O concentration generated in the closed chamber under constant temperature was examined. A vacuum pump introduced fresh air into the closed bottle to eliminate the gas present before sampling. Gas samples were obtained with a 2-day interval for the first week of incubation, after a 3-day interval for the second week, and weekly after that. When gas samples were not collected, the stopper was left open to supply sufficient oxygen, and distilled water was replenished every 2–3 days to maintain a constant moisture content considering evaporation. N₂O concentration of the gas sample was measured using gas chromatography (7890A, Agilent, Santa Clara, CA, USA). The detailed conditions are indicated in Table 4. N₂O efflux calculation formula is as follows [52]:

$$\text{N}_2\text{O efflux} = \rho \times \frac{V}{A} \times \frac{\Delta C}{\Delta t} \times \frac{273}{(T + 273)}$$

Here, N₂O efflux is emission (mg m⁻² day⁻¹) ρ is the gas density, N₂O is 1.967-mg cm⁻³, V is the chamber volume (m³), A is the chamber surface area (m²), and $\frac{\Delta C}{\Delta t}$ is the increasing N₂O concentration in the chamber per unit time (mg m⁻³ day⁻¹), and T is the constant temperature. Furthermore, the cumulative amount was calculated using $\Sigma (R \times D)$ to determine the total N₂O efflux during constant temperature. Herein, R is the N₂O generated (mg m⁻³ day⁻¹), and D is the sampling interval [52].

2.4. Soil and Biochar Analysis

For soil analysis, pH, T-C, and T-N were measured following the soil chemical analysis [53]. For pH, soil and distilled water were mixed at a 1:5 ratio (W V⁻¹) by stirring for 30 min and measured using a pH meter (S230 Mettler Toledo, Switzerland), and T-C and T-N were measured using a CN analyzer (Vario Max CN, Elementar, Langensfeld, Germany). Effective phosphoric acid was measured using the Lancaster method (UV2550PC, PerkinElmer, Waltham, MA, USA), NH₄⁺ were measured using the Indophenol-Blue colorimetric method,

and NO_3^- was measured using the Brucine. Cation Exchange Capacity and displaceable cations were measured using ICP (ICPE-9000, Shimadzu, Kyoto, Japan) after leaching with a 1N-NH₄OAc solution [53].

Table 4. SOC, T-N, C/N ratio, N₂O emissions, and cumulative N₂O emissions according to soil characteristics after 49 days of incubation conditions.

Treatments	SOC (g kg ⁻¹)	T-N (g kg ⁻¹)	C/N Ratio	N ₂ O (mg m ⁻² day ⁻¹)	Cum. N ₂ O (mg m ⁻²)	
U	U0	14.0 ± 0.3 ^c	1.6 ± 0.1 ^a	8.9 ± 0.3 ^c	3.8 ± 0.7 ^a	73.9 ± 7.3 ^{ab}
	U5	15.4 ± 0.5 ^b	1.6 ± 0.0 ^a	9.8 ± 0.3 ^b	3.9 ± 1.0 ^a	79.9 ± 4.6 ^a
	U10	16.5 ± 0.3 ^b	1.6 ± 0.1 ^a	10.5 ± 0.3 ^{bc}	3.1 ± 0.9 ^a	64.3 ± 3.4 ^b
	U20	18.2 ± 0.7 ^a	1.7 ± 0.1 ^a	11.0 ± 0.2 ^a	3.0 ± 1.0 ^a	63.9 ± 7.1 ^b
	Average	16.0 ± 0.4 ^A	1.6 ± 0.0 ^B	10.0 ± 0.2 ^A	3.5 ± 0.5 ^B	70.4 ± 2.9 ^C
G	G0	12.6 ± 0.5 ^b	1.6 ± 0.0 ^a	7.6 ± 0.2 ^c	11.6 ± 3.9 ^a	243.8 ± 9.2 ^d
	G5	13.9 ± 0.8 ^b	1.6 ± 0.1 ^a	8.5 ± 0.3 ^{bc}	17.0 ± 6.5 ^a	355.4 ± 21.1 ^a
	G10	14.5 ± 0.4 ^b	1.6 ± 0.1 ^a	8.9 ± 0.2 ^b	14.7 ± 5.6 ^a	308.2 ± 20.9 ^b
	G20	18.2 ± 1.4 ^a	1.8 ± 0.1 ^a	10.2 ± 0.5 ^a	13.2 ± 6.0 ^a	277.6 ± 30.6 ^c
	Average	14.8 ± 0.6 ^B	1.7 ± 0.0 ^A	8.8 ± 0.2 ^B	14.1 ± 2.8 ^A	296.3 ± 11.2 ^A
C	C0	6.3 ± 0.2 ^d	0.8 ± 0.0 ^b	8.1 ± 0.4 ^c	9.4 ± 1.2 ^a	206.0 ± 27.2 ^a
	C5	7.8 ± 0.3 ^c	0.9 ± 0.0 ^{ab}	9.1 ± 0.7 ^c	7.2 ± 0.9 ^{ab}	166.7 ± 18.2 ^a
	C10	9.8 ± 0.6 ^b	0.9 ± 0.0 ^a	11.0 ± 0.6 ^b	4.8 ± 0.9 ^{bc}	110.8 ± 14.2 ^b
	C20	12.0 ± 0.7 ^a	0.9 ± 0.0 ^a	13.0 ± 0.6 ^a	3.0 ± 0.4 ^b	68.7 ± 6.5 ^b
	Average	9.0 ± 0.5 ^C	0.9 ± 0.0 ^C	10.3 ± 0.5 ^A	6.2 ± 0.5 ^B	139.3 ± 9.8 ^B
R	R0	3.7 ± 0.4 ^c	0.7 ± 0.0 ^a	5.1 ± 0.3 ^c	3.5 ± 0.4 ^a	75.3 ± 8.6 ^a
	R5	4.4 ± 0.3 ^{bc}	0.8 ± 0.0 ^a	5.8 ± 0.3 ^{bc}	2.7 ± 0.4 ^{ab}	61.2 ± 6.8 ^{ab}
	R10	5.7 ± 0.5 ^{ab}	0.8 ± 0.0 ^a	7.5 ± 0.7 ^{ab}	2.5 ± 0.4 ^{ab}	56.0 ± 5.8 ^{ab}
	R20	6.7 ± 0.6 ^a	0.7 ± 0.0 ^a	9.2 ± 0.9 ^a	2.2 ± 0.4 ^b	49.4 ± 5.6 ^b
	Average	5.1 ± 0.3 ^D	0.7 ± 0.0 ^D	6.9 ± 0.4 ^C	2.7 ± 0.2 ^B	60.5 ± 3.4 ^C
T	0	9.2 ± 0.9 ^d	1.2 ± 0.1 ^b	7.4 ± 0.3 ^d	7.2 ± 1.1 ^b	153.1 ± 9.3 ^a
	5	10.4 ± 1.0 ^c	1.2 ± 0.1 ^b	8.3 ± 0.4 ^c	7.7 ± 1.7 ^a	165 ± 10.2 ^a
	10	11.6 ± 0.9 ^b	1.2 ± 0.1 ^{ab}	9.5 ± 0.4 ^b	6.4 ± 1.5 ^b	135.9 ± 9.2 ^b
	20	13.8 ± 1.1 ^a	1.3 ± 0.1 ^a	10.9 ± 0.4 ^a	5.4 ± 1.6 ^b	114.9 ± 10.0 ^c
	Average	11.2 ± 0.5	1.2 ± 0.0	9.0 ± 0.2	6.7 ± 0.7	142.4 ± 4.9
Effect [†]			Probability > F [‡]			
Soil characteristic (A)	<i>p</i> < 0.000	<i>p</i> < 0.000	<i>p</i> < 0.000	<i>p</i> < 0.000	<i>p</i> < 0.000	
Biochar type (B)	<i>p</i> < 0.035	<i>p</i> < 0.000	<i>p</i> = 0.830	<i>p</i> < 0.003	<i>p</i> < 0.000	
Biochar rate (C)	<i>p</i> < 0.009	<i>p</i> < 0.025	<i>p</i> < 0.000	<i>p</i> = 0.693	<i>p</i> < 0.000	
(A) × (B)	<i>p</i> = 0.097	<i>p</i> < 0.000	<i>p</i> < 0.008	<i>p</i> < 0.006	<i>p</i> < 0.000	
(A) × (C)	<i>p</i> = 0.192	<i>p</i> = 0.421	<i>p</i> = 0.069	<i>p</i> = 0.948	<i>p</i> < 0.000	
(B) × (C)	<i>p</i> < 0.002	<i>p</i> = 0.109	<i>p</i> < 0.029	<i>p</i> = 0.613	<i>p</i> < 0.000	
(A) × (B) × (C)	<i>p</i> = 0.312	<i>p</i> = 0.247	<i>p</i> = 0.667	<i>p</i> = 0.732	<i>p</i> < 0.000	

Values are the means with standard errors in parentheses (*n* = 3), and those followed by a different letter are significantly different at $\alpha = 0.05$ between treatments. [†] ANOVA was conducted for all treatments. [‡] The bold indicates that the effects are significant at $\alpha = 0.05$. A, B, C, D: A result of Duncan's multiple range test by soil characteristics (*p* < 0.05). a, b, c, d: A result of Duncan's multiple range test by a biochar application rate (*p* < 0.05). U: upland, G: greenhouse, C: converted land, R: reclaimed land; T: average of all soil by biochar application rate; 0: control, 5: 5 ton ha⁻¹, 10: 10 ton ha⁻¹, 20: 20 ton ha⁻¹.

Biochar pH was measured using the equipment used for soil analysis by mixing biochar and distilled water at a ratio of 1:10 (W V⁻¹) and stirring, whereas for T-C and T-N, total hydrogen was measured using an Elemental Analyzer (Vario MACRO cube, Elementar, Germany) and specific surface area was assessed using a surface area analyzer (BELSORP-max, BEL, Toyonaka, Japan) [54].

2.5. Statistical Analysis

A comparison of N₂O emissions according to biochar application by soil in agricultural land was statistically processed using SPSS statistics (Version 25, IBM, Armonk, NY, USA). All data are expressed as mean \pm standard error. Two-way ANOVA was conducted to compare the differences between the treatments. Additionally, Duncan's multiple range test was performed only when the F-test value was significant in the range of $p < 0.05$.

3. Results

3.1. Soil Chemistry Properties

The SOC indicated a significant difference between soil characteristics and also significantly increased according to the biochar application rate. U20, G20, C20, and R20 were increased SOC content by 23.2%, 30.8%, 47.2%, and 44.6%, Compared with U0, G0, C0, and R0. The increase rate of SOC was highest in converted land soil and lowest in upland soil (Table 4).

Only the converted land soil had a significant difference in T-N according to the amount of biochar input. There was no significant difference in T-N depending on the biochar application rates within the U, G, and R soil. However, there was a significant difference in the 20-ton ha⁻¹ treatment overall in agricultural land. Nitrogen content was relatively high in greenhouse and upland soil, where ammonium ions (NH₄⁺) and nitrates (NO₃⁻) existed at relatively high levels. In the C20 treatment group, T-N was significantly increased by 14.7% compared with the control group. Although there was no significant difference, T-N increased by 3.6%, 7.7%, and 1.3% in U20, G20, and R20 treatment groups. As a result, the nitrogen improvement effect by biochar input was the highest in converted soil (Table 4).

The C/N ratio indicated a significant difference between soil characteristics and significantly increased according to the amount of biochar input. C/N ratio increased by 19.8%, 24.9%, 37.5%, and 45.1% in the U20, G20, C20, and R20 treatment groups, respectively, compared with the control group. Similar to SOC, the C/N increase rate was highest in the reclaimed land soil and the lowest in upland soil (Table 4).

3.2. N₂O Emission

N₂O emissions were analyzed for 49 days, and a significant difference between soil characteristics was observed (Table 4). The average N₂O emission of the greenhouse soil was highest with 14.1 ± 2.8 -mg m⁻² day⁻¹ and the lowest in the reclaimed land soil with 2.7 ± 0.2 mg-m⁻² day⁻¹. N₂O emission rapidly increased in upland and greenhouse soil early in the constant temperature conditions, whereas the converted land and reclaimed land soil exhibited the highest level on the 14th day of continuous temperature.

As a result of the analysis of N₂O emissions according to biochar feedstock, N₂O emissions indicated a significant difference between biochar feedstocks. N₂O emission was lower than that in the control group in all soils to which BB was applied, but N₂O emissions increased in upland and greenhouse soils treated with PB biochar than in the control group (Figure 1).

3.3. Cumulative N₂O Emission

As a result of the analysis, there was a significant difference between cumulative N₂O emissions and soil. The cumulative N₂O emission from reclaimed land soil was the lowest, with 60.5 ± 3.4 -mg m⁻², and highest in greenhouse soil, with 296.3 ± 11.2 -mg m⁻². The cumulative N₂O emission from reclaimed soil was not significantly different from that of upland soil (70.4 ± 2.9 -mg m⁻²), and was significantly lower than that of converted land soil (139.3 ± 9.8 -mg m⁻²) (Table 4).

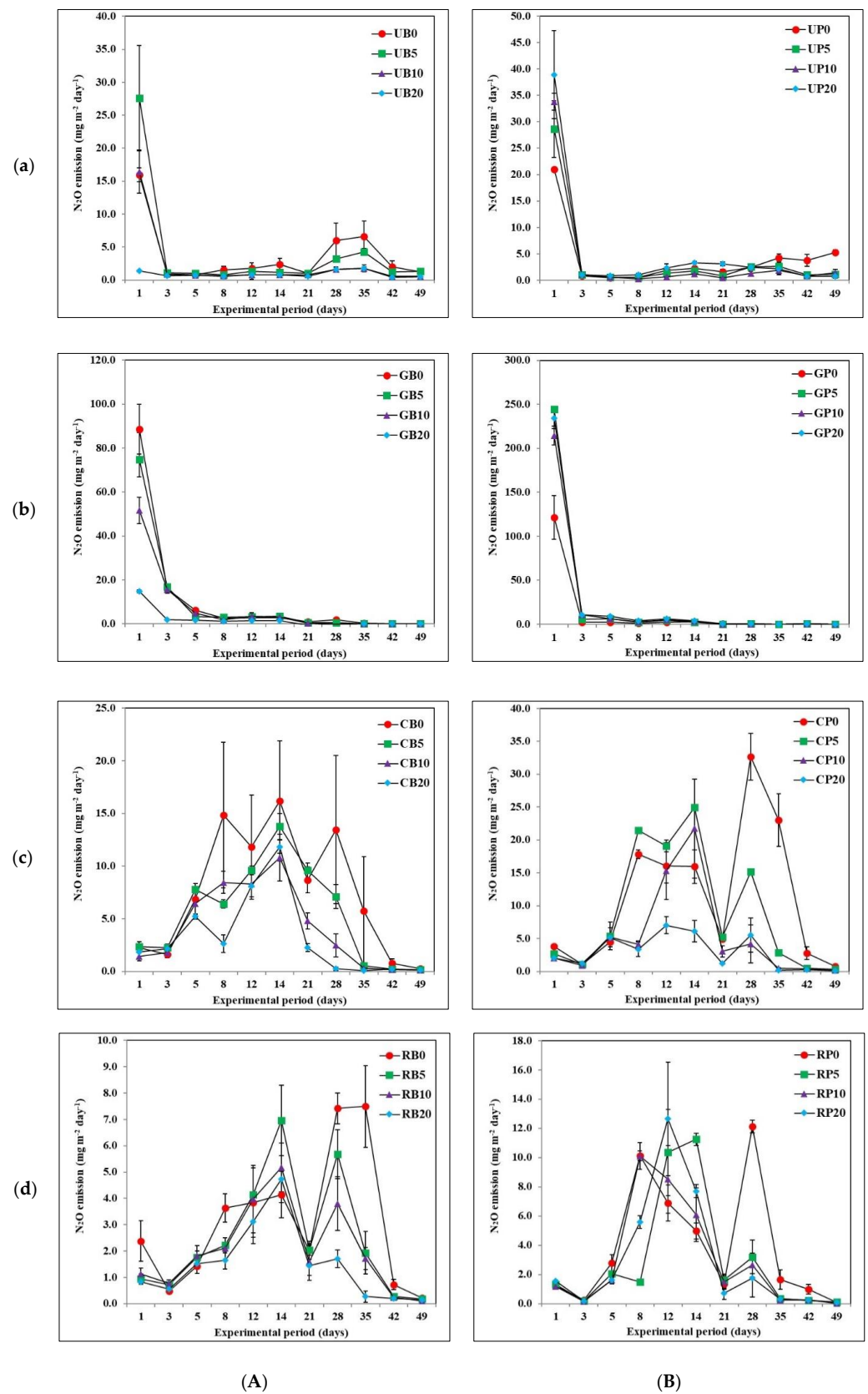


Figure 1. N₂O emission according to soil characteristics under incubation conditions during the 49 days. The error bars represent standard errors (n = 3). (a): upland, (b): greenhouse, (c): converted land, (d): reclaimed land. (A): barley straw biochar, (B): poultry manure biochar.

Analysis of the cumulative N_2O emissions according to biochar type showed that BB significantly decreased N_2O emissions compared with PB. The cumulative N_2O emissions of soil where BB was applied was $94.9 \pm 4.2 \text{ g m}^{-2}$, and PB biochar were found to be $189.9 \pm 8.3 \text{ g m}^{-2}$. Approximately 200% more N_2O was emitted from PB than from BB, a raw vegetable material (Figure 2).

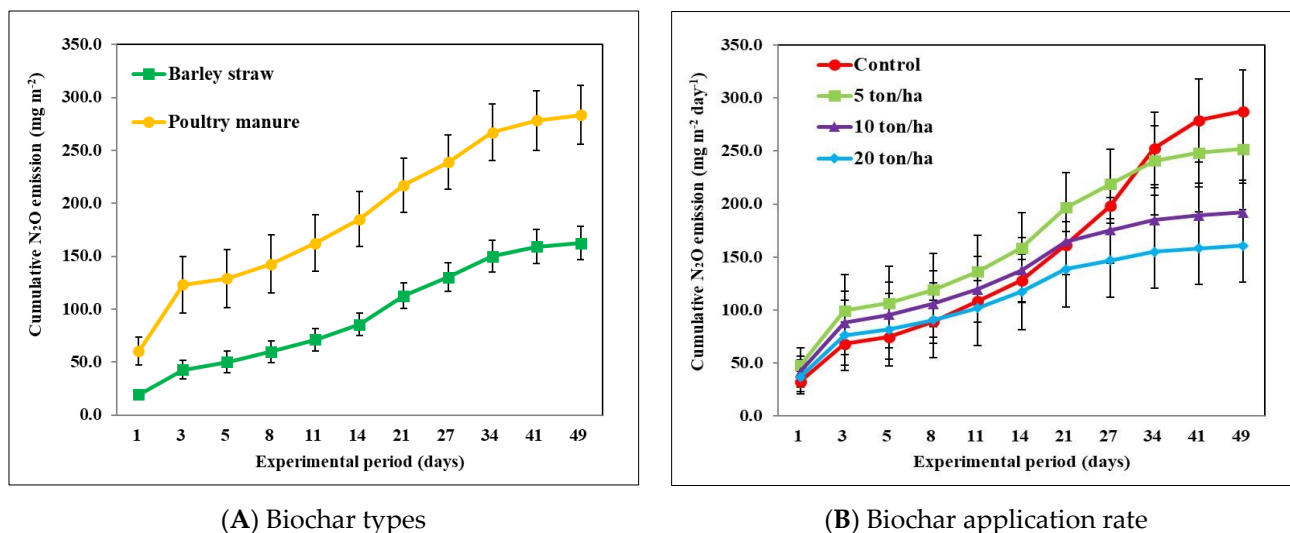


Figure 2. Cumulative N_2O emission according to biochar types and application rates under incubation conditions during the 49 days. The error bars represent standard errors ($n = 3$). (A): Cumulative N_2O emission by biochar types on all soil characteristics. (B): Cumulative N_2O emission by biochar types on all soil characteristics.

As a result of analyzing the cumulative N_2O emission according to the biochar application rate, it was found that the N_2O emission was significantly reduced in the group treated with 10 and 20-ton ha^{-1} . No significant differences in the remaining 5 ton ha^{-1} treated groups were observed. N_2O emissions were reduced by approximately 12.7% and 33.2% in the group treated with 10 and 20-ton ha^{-1} biochar, with 135.9 ± 9.2 and 114.9 ± 10.0 - mg m^{-2} , compared with 153.1 ± 9.3 - mg m^{-2} of the control group only treated with fertilizer (Figure 2).

As a result of analyzing the cumulative N_2O emissions after applying biochar in upland soil, N_2O emissions significantly decreased in the UB10 and UB20 treatment groups. No significant differences were observed in the UB5, UP5, UP10, and UP20 experimental groups. N_2O emissions were reduced by 53.0% and 313.2% in UB10 and UB20, respectively, with 48.1 ± 3.9 - mg m^{-2} and 17.8 ± 3.0 - mg m^{-2} , compared with the control group with 73.7 ± 10.6 - mg m^{-2} (Figure 3).

In the greenhouses, N_2O emissions were significantly reduced in the GB5, GB10, and GB20 experimental groups, but significantly increased in the GP5, GP10, and GP20 experimental groups. Compared with the control group, cumulative N_2O emission in GB5, GB10, and GB20 was reduced by 15.5%, 51.7%, and 465.1%, respectively, but increased by 50.0%, 45.0%, and 50.5% in GP5, GP10, and GP20, respectively (Figure 3).

In the converted land soil, N_2O emissions were significantly decreased in the CB10, CB20, CP10, and CP20 experimental groups and reduced by 80.6%, 136.3%, 98.3%, and 270.6% in the CB10, CB20, CP10, and CP20 treatment groups, respectively, compared with the control group. There was no significant difference between the BP5, CP10 experimental, and control groups. Overall, N_2O emission was observed to reduce in proportion to the biochar application rate.

In the reclaimed land soil, no significant difference was found in the experimental and control groups. However, there was no difference from the control group before the 28th day, but after the 28th day, a difference in the biochar-treated group was observed. N_2O

emissions were reduced by 18.2%, 43.3%, and 94.5% in RB5, RB10, and RB20, respectively, on the 49th day. N_2O emissions decreased in RP5, RP10, and RP20, and were reduced by 27.0%, 28.7%, and 30.6%, respectively (Figure 3).

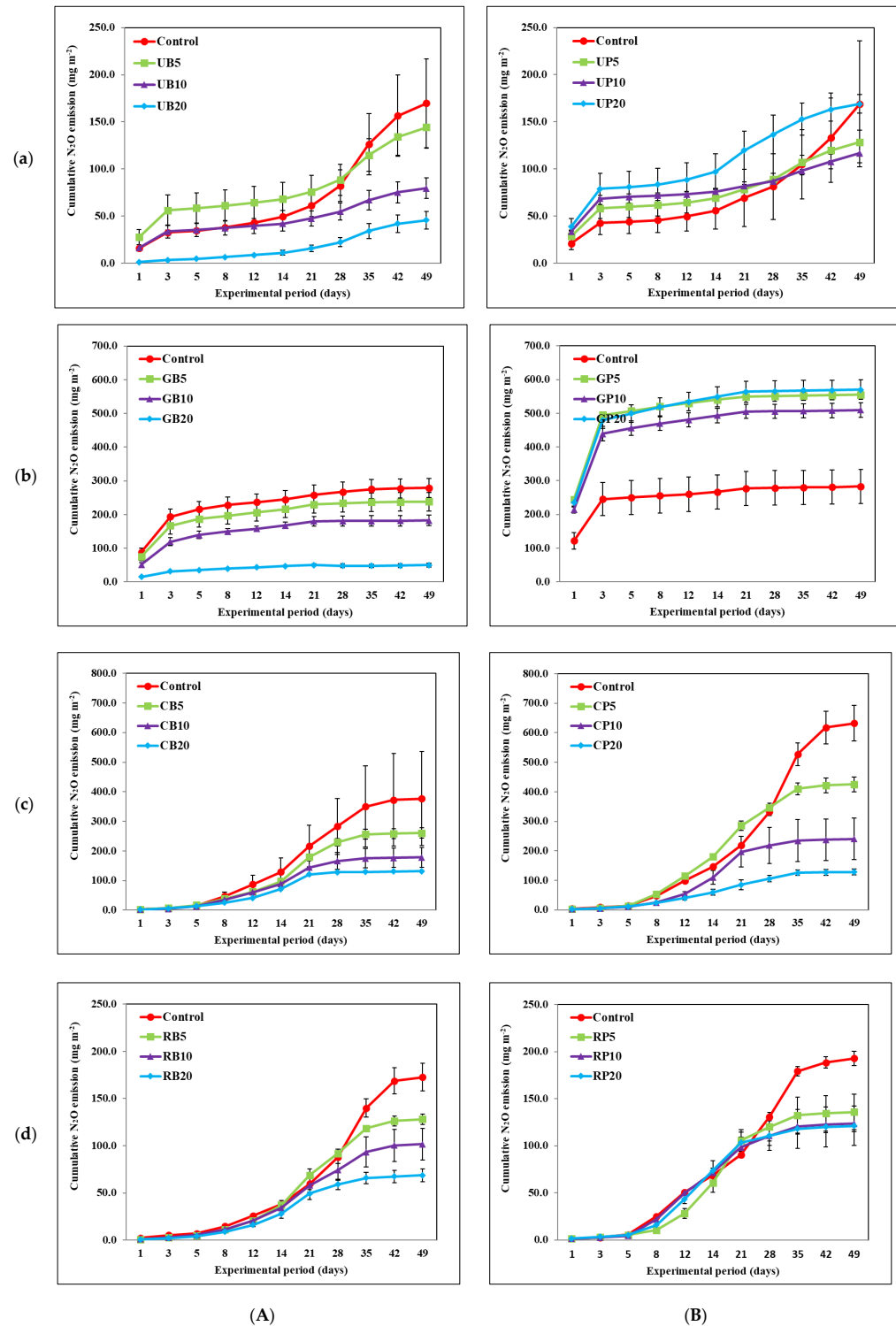


Figure 3. Cumulative N_2O emission on biochar types and application rates according to soil characteristics under incubation conditions during the 49 days. The error bars represent standard errors ($n = 3$). (a): upland, (b): greenhouse, (c): converted land, (d): reclaimed land. (A) barley straw biochar, (B) poultry manure biochar.

4. Discussion

4.1. Effect of Biochar Application on SOC Improvement

Biochar has a positive effect on soil improvement in agricultural land [33,55,56], but the effect depends on the biochar material [11,29,57], input amount [27,31,58], manufacturing temperature [9,31], and soil conditions [12,15,59]. Nonetheless, when degradation-resistant biochar is added to the soil, SOC increases [44,47] and it induces the recovery of physical, chemical, and biological qualities of the soil [33,38,39]. Among the different effects of biochar, its ability to store carbon and decrease greenhouse emissions is the most highly evaluated [40]. The direct input of organic substances, such as rice straw into the soil, significantly increases C emissions because of biodegradation [60].

However, because biochar is a non-degradable material unaffected by biodegradation [41,42], soil carbon increases but does not influence emissions because it does not decompose [58,61]. Considering the carbon loss rate of crop biomass during the biochar conversion process, about 20% of the carbon contained in the initial biomass can be sequestered into the soil [10]. Long-term application of black carbon stimulated enhanced stabilization of non-pyrogenic soil. Organic carbon can increase soil carbon stocks by 30–60% [62].

Yang et al. [47] reported additional SOC of 18.0–37.2% in cornfields through the application of biochar, and Ma et al. [26] reported a 31.5% SOC stock effect through biochar application in double cropping (rice–wheat) agricultural land. Wang et al. [44] reported a SOC increase effect of 21.6% by applying biochar to paddy soil. The SOC significantly increased to 33.2% compared to the control in this study. SOC was higher in the U and G than in the C and R, but the increase ratio was higher in the C and R. The carbon ratio distinctly increased in C and R soil with initial low carbon content. The highest SOC increase rate was 47.2% in C soil and 44.6% in R soil. This is because biochar applications are more effective in poor soil than in fertile soil [27]. Lee et al. [63] reported that when the initial carbon content of the test soil was low, the increase rate of soil carbon compared with the amount of carbon input from biochar was high. This is similar to the results from this study. Thus, in poor soil, the effect of biochar on carbon storage and nitrous oxide emission suppression was high. However, it is considered that it is necessary to select the initial soil condition and the type of biochar for fertile soil.

4.2. Effect of Biochar Application on N₂O Emission

Biochar directly and indirectly influence processes such as the uptake of low mineral nitrogen and soil denitrification to reduce N₂O emissions [64–66]. This study indicated that sections treated with BB decreased N₂O emissions by 74.5% compared with those treated using PB. When biochar with a high C/N ratio is injected into the soil, nitrogen is stabilized, thus suppressing N₂O emission from the soil [25]. The C/N ratios of BB and PB were 17.3 and 13.8, respectively. It is thought that BB had lower N₂O emissions than PB because its C/N ratio was 25.4% higher. C/N ratios of BB were lower than 27.3 for maize straw biochar [14] and 46.6 for rice straw biochar [15], and 72.1 for wheat straw biochar [13]. However, it was higher than pig manure biochar and poultry manure biochar [11,12,67]. Liu et al. [68] discovered that N₂O emission was higher in manure biochar than that in straw biochar through a meta-analysis, and some studies even discovered that it increased N₂O emissions. Biochar may change N₂O emissions by affecting ammonia oxidation and denitrification, determined by the amount of biochar injected into the soil [69]. Similar to these studies, it was found that areas treated with PB had N₂O emissions that were 74.5% higher than those in areas treated with BB. These results suggest that the difference arises based on the features of the raw materials in the vegetable matter and animal matter. Thus, vegetable biochar is expected to be applicable on site, but animal biochar is thought to require further research on the amount of application.

In this study, N₂O emissions of the soil decreased in proportion to the biochar application rate. Results were the same as in a meta-analysis study by Liu et al. [68], which found that an increase in biochar input accelerated the soil N₂O emission reductions. Cayuela

et al. [35] reported that N_2O emissions were decreased according to the increasing biochar application rate. In this study too, it was analyzed that the N_2O emission decreased by 33.2% in the 20-ton ha^{-1} treatment group that received the most biochar. This result was lower than in the study by Zhang et al. [2] showing that N_2O emissions were reduced by an average of 38% with biochar input. It was also lower than the study by Shaukat et al. [18], which reported a 49–61% reduction in N_2O in an experiment comparing a control group treated with nitrogen only and a group treated with nitrogen and Biochar. However, it was higher than the meta-analysis results of Liu et al. [68], and Han et al. [70], 32% and 32.6%. These results are similar to those of our study.

However, no significant difference was observed in upland soils between those treated with PB and the control group, and in the case of greenhouse soil, N_2O emissions increased significantly according to the PB application rate (Figure 3). These results can be explained in two aspects. The first reason might have been caused by its higher N concentration, which potentially increased N substrate availability for nitrification or denitrification processes that release N_2O [40]. Indeed, biochar derived from Poultry manure was higher in T-N, ranging approximately 2 times than BB (Table 2). Consequently, PB with more N was incorporated into G soils that have more N concentration after amendment, which would increase soil N availability and hence soil N_2O emissions [9]. Subedi et al. [12] reported that poultry manure biochar made at high temperature emitted about 20% more N_2O than the control, and poultry biochar made at low temperature increased by approximately 100–200% more. In addition, Subedi et al. [12] reported that poultry manure biochar increased N_2O emission about 15–253% than the control. The second reason may be related to microorganisms and soil moisture. Soil N_2O emissions are primarily a microbial process, and soil moisture is a significant factor in N_2O emissions as it regulates oxygen availability to soil microbes [39,66,71]. Biochar could increase soil N_2O emissions when the soil has abundant inorganic nitrogen and relatively low moisture [$<80\%$ WFPS (water-filled pore space), the main route of N_2O emissions] [35,72,73]. Therefore, upland soil and greenhouse soil had higher NH_4^+ and NO_3^- contents than other soils, and it is believed that experiment conditions of $<80\%$ WFPS contributed to these results. Moreover, the input of PB, which has a high nitrogen content unlike BB, accelerated nitrification, and the input of biochar increased the amount of N_2O emissions. This study shows that both biochar type and the amount of nitrogen in the soil were important factors affecting soil N_2O emission [29,74].

Shi et al. [65] proposed a reduction in the number of ammonia-oxidizing archaea (AOA, also called ammonia-oxidizing bacteria, AOB) and an increase in the number of nitrous oxide reductase genes (*nosZ*) due to biochar input as the primary reason for the reduction in soil N_2O emissions. In contrast, Li et al. [75] reported that biochar is associated with high activity of AOA and AOB in the nitrification process, and Liu et al. [68] reported that biochar increases the population of AOA and AOB and contributes to biochemical reactions. Although N_2O has been shown to be produced primarily by nitrification and denitrification processes, deposition of N can improve N_2O emissions by providing more N to nitrification or denitrification communities [9]. Although data on the actual rates of soil nitrification and denitrification are increasing, little is known regarding N_2 emissions and N_2O production and consumption at different scales in the field [35]. These results suggest that additional research on biochar in the soil ecosystem's nitrogen cycle network and the microbiome is necessary [30].

5. Conclusions

This study attempted to evaluate the effect of improving SOC and reducing N_2O emissions according to the soil characteristics that can be used for agricultural land. As a result, we found that the effect of biochar was higher in poor soil than in fertile soil. In addition, the effect of plant-based biochar was higher than that of animal-manure-based biochar. The effect of biochar was higher in carbon storage and nitrous oxide emissions in poor soil than in fertile soil. Barley straw biochar increased SOC in all soils and reduced N_2O emissions. However, poultry biochar accelerated N_2O emissions in upland or greenhouse

cultivation land, which is fertile soil. The application of biochar improves SOC regardless of fertility and biochar type, but can increase N₂O emissions depending on soil fertility and biochar type. Therefore, to store carbon within the soil in agricultural land and decrease N₂O emissions, rather than uniformly applying biochar to all soil characteristics, biochar application considering soil characteristics, biochar feedstock, and the application rates is advised. Long-term observational studies using biochar to inhibit atmospheric N₂O emissions and positively influence crop production are necessary for sustainable agriculture in the future.

Author Contributions: Conceptualization, S.-I.L.; Data curation, J.-M.L.; Formal analysis, J.-M.L.; Investigation, J.-M.L., D.-G.P. and S.-I.L.; Methodology, S.-I.L.; Project administration, S.-I.L.; Supervision, S.-I.L.; Validation, S.-I.L.; Visualization, J.-M.L.; Writing—original draft, J.-M.L.; Writing—review & editing, J.-M.L., S.-S.K., E.-J.C., H.-S.G., H.-S.L. and S.-I.L. All authors have read and agreed to the published version of the manuscript.

Funding: This work was carried out with the support of the “Cooperative Research Program for Agriculture Science and Technology Development (PJ01556801)”, Rural Development Administration, Republic of Korea.

Institutional Review Board Statement: Not applicable.

Informed Consent Statement: Not applicable.

Data Availability Statement: Not applicable.

Conflicts of Interest: The authors declare that they have no conflict of interest.

References

- Lal, R. Soil Health and Carbon Management. *Food Energy Secur.* **2016**, *5*, 212–222. [[CrossRef](#)]
- Zhang, Q.; Xiao, J.; Xue, J.; Zhang, L. Quantifying the Effects of Biochar Application on Greenhouse Gas Emissions from Agricultural Soils: A Global Meta-Analysis. *Sustainability* **2020**, *12*, 3436. [[CrossRef](#)]
- IPCC. *Climate Change 2014: Synthesis Report. Contribution of Working Groups I, II and III to the Fifth Assessment Report of the Intergovernmental Panel on Climate Change*; IPCC: Geneva, Switzerland, 2014; ISBN 9789291691432.
- Cui, Z.; Wang, G.; Yue, S.; Wu, L.; Zhang, W.; Zhang, F.; Chen, X. Closing the N Use Efficiency Gap to Achieve Food and Environmental Security. *Environ. Sci. Technol.* **2014**, *48*, 5780–5787. [[CrossRef](#)] [[PubMed](#)]
- Case, S.D.C.; McNamara, N.P.; Reay, D.S.; Stott, A.W.; Grant, H.K.; Whitaker, J. Biochar Suppresses N₂O Emissions While Maintaining N Availability in a Sandy Loam Soil. *Soil Biol. Biochem.* **2015**, *81*, 178–185. [[CrossRef](#)]
- Revell, L.E.; Tummon, F.; Salawitch, R.J.; Stenke, A.; Peter, T. The Changing Ozone Depletion Potential of N₂O in a Future Climate. *Geophys. Res. Lett.* **2015**, *42*, 10047–10055. [[CrossRef](#)]
- IPCC. *Climate Change 2013: The Physical Science Basis, Contribution of Working Groups I to the Fifth Assessment Report of the Intergovernmental Panel on Climate Change*; IPCC: Geneva, Switzerland, 2013.
- Deng, B.L.; Wang, S.L.; Xu, X.T.; Wang, H.; Hu, D.N.; Guo, X.M.; Shi, Q.H.; Siemann, E.; Zhang, L. Effects of Biochar and Dicyandiamide Combination on Nitrous Oxide Emissions from Camellia Oleifera Field Soil. *Environ. Sci. Pollut. Res.* **2019**, *26*, 4070–4077. [[CrossRef](#)]
- Deng, B.; Zheng, L.; Ma, Y.; Zhang, L.; Liu, X.; Zhang, X.; Zhang, W.; Huang, W.; Hu, X.; Guo, X.; et al. Effects of Mixing Biochar on Soil N₂O, CO₂, and CH₄ Emissions after Prescribed Fire in Alpine Meadows of Wugong Mountain, China. *J. Soils Sediments* **2020**, *20*, 3062–3072. [[CrossRef](#)]
- Lehmann, J. A Handful of Carbon. *Nature* **2007**, *447*, 143–144. [[CrossRef](#)]
- Ginebra, M.; Muñoz, C.; Calvelo-Pereira, R.; Doussoulin, M.; Zagal, E. Biochar Impacts on Soil Chemical Properties, Greenhouse Gas Emissions and Forage Productivity: A Field Experiment. *Sci. Total Environ.* **2022**, *806*, 150465. [[CrossRef](#)]
- Subedi, R.; Taupe, N.; Pelissetti, S.; Petruzzelli, L.; Bertora, C.; Leahy, J.J.; Grignani, C. Greenhouse Gas Emissions and Soil Properties following Amendment with Manure-Derived Biochars: Influence of Pyrolysis Temperature and Feedstock Type. *J. Environ. Manag.* **2016**, *166*, 73–83. [[CrossRef](#)]
- Wu, Y.; Li, Y.; Wang, H.; Wang, Z.; Fu, X.; Shen, J.; Wang, Y.; Liu, X.; Meng, L.; Wu, J. Response of N₂O Emissions to Biochar Amendment on a Tea Field Soil in Subtropical Central China: A Three-Year Field Experiment. *Agric. Ecosyst. Environ.* **2021**, *318*, 107473. [[CrossRef](#)]
- Xie, Y.; Yang, C.; Ma, E.; Tan, H.; Zhu, T.; Müller, C. Biochar Stimulates NH₄⁺ Turnover While Decreasing NO₃⁻ Production and N₂O Emissions in Soils under Long-Term Vegetable Cultivation. *Sci. Total Environ.* **2020**, *737*, 140266. [[CrossRef](#)] [[PubMed](#)]
- He, L.; Zhao, X.; Wang, S.; Xing, G. The Effects of Rice-Straw Biochar Addition on Nitrification Activity and Nitrous Oxide Emissions in Two Oxisols. *Soil Tillage Res.* **2016**, *164*, 52–62. [[CrossRef](#)]

16. Zaw Oo, A.; Sudo, S.; Thuzar Win, K.; Shibata, A.; Gonai, T. Influence of Pruning Waste Biochar and Oyster Shell on N₂O and CO₂ Emissions from Japanese Pear Orchard Soil. *Heliyon* **2018**, *4*, 568. [[CrossRef](#)]
17. Toma, Y.; Higuchi, T.; Nagata, O.; Kato, Y.; Izumiya, T.; Oomori, S.; Ueno, H. Efflux of Soil Nitrous Oxide from Applied Fertilizer Containing Organic Materials in Citrus Unshiu Field in Southwestern Japan. *Agriculture* **2017**, *7*, 10. [[CrossRef](#)]
18. Shaukat, M.; Samoy-Pascual, K.; Maas, E.D.V.L.; Ahmad, A. Simultaneous Effects of Biochar and Nitrogen Fertilization on Nitrous Oxide and Methane Emissions from Paddy Rice. *J. Environ. Manag.* **2019**, *248*, 109242. [[CrossRef](#)]
19. Grutzmacher, P.; Puga, A.P.; Bibar, M.P.S.; Coscione, A.R.; Packer, A.P.; de Andrade, C.A. Carbon Stability and Mitigation of Fertilizer Induced N₂O Emissions in Soil Amended with Biochar. *Sci. Total Environ.* **2018**, *625*, 1459–1466. [[CrossRef](#)]
20. Liu, J.; Shen, J.; Li, Y.; Su, Y.; Ge, T.; Jones, D.L.; Wu, J. Effects of Biochar Amendment on the Net Greenhouse Gas Emission and Greenhouse Gas Intensity in a Chinese Double Rice Cropping System. *Eur. J. Soil Biol.* **2014**, *65*, 30–39. [[CrossRef](#)]
21. Carvalho, M.T.M.; Madari, B.E.; Bastiaans, L.; van Oort, P.A.J.; Leal, W.G.O.; Heinemann, A.B.; da Silva, M.A.S.; Maia, A.H.N.; Parsons, D.; Meinke, H. Properties of a Clay Soil from 1.5 to 3.5 Years after Biochar Application and the Impact on Rice Yield. *Geoderma* **2016**, *276*, 7–18. [[CrossRef](#)]
22. Lin, X.W.; Xie, Z.B.; Zheng, J.Y.; Liu, Q.; Bei, Q.; Zhu, J.G. Effects of Biochar Application on Greenhouse Gas Emissions, Carbon Sequestration and Crop Growth in Coastal Saline Soil. *Eur. J. Soil Sci.* **2015**, *66*, 329–338. [[CrossRef](#)]
23. Liu, J.; Qiu, H.; Wang, C.; Shen, J.; Zhang, W.; Cai, J.; Tang, H.; Wu, J. Effects of Biochar Amendment on Greenhouse Gas Emission in Two Paddy Soils with Different Textures. *Paddy Water Environ.* **2021**, *19*, 87–98. [[CrossRef](#)]
24. Li, J.; Kwak, J.H.; Chang, S.X.; Gong, X.; An, Z.; Chen, J. Greenhouse Gas Emissions from Forest Soils Reduced by Straw Biochar and Nitrapyrin Applications. *Land* **2021**, *10*, 189. [[CrossRef](#)]
25. Hu, Z.; Towfiqul Islam, A.R.M.; Chen, S.; Hu, B.; Shen, S.; Wu, Y.; Wang, Y. Effects of Warming and Reduced Precipitation on Soil Respiration and N₂O Fluxes from Winter Wheat-Soybean Cropping Systems. *Geoderma* **2019**, *337*, 956–964. [[CrossRef](#)]
26. Ma, Y.; Liu, D.L.; Schwenke, G.; Yang, B. The Global Warming Potential of Straw-Return Can Be Reduced by Application of Straw-Decomposing Microbial Inoculants and Biochar in Rice-Wheat Production Systems. *Environ. Pollut.* **2019**, *252*, 835–845. [[CrossRef](#)] [[PubMed](#)]
27. Hailegnaw, N.S.; Mercl, F.; Pračke, K.; Száková, J.; Tlustoš, P. Mutual Relationships of Biochar and Soil PH, CEC, and Exchangeable Base Cations in a Model Laboratory Experiment. *J. Soils Sediments* **2019**, *19*, 2405–2416. [[CrossRef](#)]
28. Bednik, M.; Medyńska-Juraszek, A.; Cwielałag-Piasecka, I. Effect of Six Different Feedstocks on Biochar's Properties and Expected Stability. *Agronomy* **2022**, *12*, 1525. [[CrossRef](#)]
29. Oo, A.Z.; Sudo, S.; Akiyama, H.; Win, K.T.; Shibata, A.; Yamamoto, A.; Sano, T.; Hirono, Y. Effect of Dolomite and Biochar Addition on N₂O and CO₂ Emissions from Acidic Tea Field Soil. *PLoS ONE* **2018**, *13*, e0192235. [[CrossRef](#)]
30. Martos, S.; Mattana, S.; Ribas, A.; Albanell, E.; Domene, X. Biochar Application as a Win-Win Strategy to Mitigate Soil Nitrate Pollution without Compromising Crop Yields: A Case Study in a Mediterranean Calcareous Soil. *J. Soils Sediments* **2020**, *20*, 220–233. [[CrossRef](#)]
31. Han, L.; Zhang, B.; Chen, L.; Feng, Y.; Yang, Y.; Sun, K. Impact of Biochar Amendment on Soil Aggregation Varied with Incubation Duration and Biochar Pyrolysis Temperature. *Biochar* **2021**, *3*, 339–347. [[CrossRef](#)]
32. Omondi, M.O.; Xia, X.; Nahayo, A.; Liu, X.; Korai, P.K.; Pan, G. Quantification of Biochar Effects on Soil Hydrological Properties Using Meta-Analysis of Literature Data. *Geoderma* **2016**, *274*, 28–34. [[CrossRef](#)]
33. Nguyen, T.T.N.; Xu, C.Y.; Tahmasbian, I.; Che, R.; Xu, Z.; Zhou, X.; Wallace, H.M.; Bai, S.H. Effects of Biochar on Soil Available Inorganic Nitrogen: A Review and Meta-Analysis. *Geoderma* **2017**, *288*, 79–96. [[CrossRef](#)]
34. Shakoar, A.; Arif, M.S.; Shahzad, S.M.; Farooq, T.H.; Ashraf, F.; Altaf, M.M.; Ahmed, W.; Tufail, M.A.; Ashraf, M. Does Biochar Accelerate the Mitigation of Greenhouse Gaseous Emissions from Agricultural Soil?—A Global Meta-Analysis. *Environ. Res.* **2021**, *202*, 111789. [[CrossRef](#)] [[PubMed](#)]
35. Cayuela, M.L.; van Zwieten, L.; Singh, B.P.; Jeffery, S.; Roig, A.; Sánchez-Monedero, M.A. Biochar's Role in Mitigating Soil Nitrous Oxide Emissions: A Review and Meta-Analysis. *Agric. Ecosyst. Environ.* **2014**, *191*, 5–16. [[CrossRef](#)]
36. Ok, J.-H.; Cho, J.-L.; Lee, B.-M.; An, N.-H.; Shin, J.-H. Monitoring for Change of Soil Characteristics by Repeated Organic Supply of Compost and Green Manures in Newly Reclaimed Organic Upland Field. *Korean J. Org. Agric.* **2015**, *23*, 813–827. [[CrossRef](#)]
37. Cai, F.; van Vliet, J.; Verburg, P.H.; Pu, L. Land Use Change and Farmer Behavior in Reclaimed Land in the Middle Jiangsu Coast, China. *Ocean Coast. Manag.* **2017**, *137*, 107–117. [[CrossRef](#)]
38. Gross, C.D.; Bork, E.W.; Carlyle, C.N.; Chang, S.X. Biochar and Its Manure-Based Feedstock Have Divergent Effects on Soil Organic Carbon and Greenhouse Gas Emissions in Croplands. *Sci. Total Environ.* **2022**, *806*, 151337. [[CrossRef](#)]
39. Tarin, M.W.K.; Khaliq, M.A.; Fan, L.; Xie, D.; Tayyab, M.; Chen, L.; He, T.; Rong, J.; Zheng, Y. Divergent Consequences of Different Biochar Amendments on Carbon Dioxide (CO₂) and Nitrous Oxide (N₂O) Emissions from the Red Soil. *Sci. Total Environ.* **2021**, *754*, 141935. [[CrossRef](#)]
40. Deng, B.; Yuan, X.; Siemann, E.; Wang, S.; Fang, H.; Wang, B.; Gao, Y.; Shad, N.; Liu, X.; Zhang, W.; et al. Feedstock Particle Size and Pyrolysis Temperature Regulate Effects of Biochar on Soil Nitrous Oxide and Carbon Dioxide Emissions. *Waste Manag.* **2021**, *120*, 33–40. [[CrossRef](#)]
41. Yin, X.; Peñuelas, J.; Sardans, J.; Xu, X.; Chen, Y.; Fang, Y.; Wu, L.; Singh, B.P.; Tavakkoli, E.; Wang, W. Effects of Nitrogen-Enriched Biochar on Rice Growth and Yield, Iron Dynamics, and Soil Carbon Storage and Emissions: A Tool to Improve Sustainable Rice Cultivation. *Environ. Pollut.* **2021**, *287*, 117565. [[CrossRef](#)] [[PubMed](#)]

42. Farrar, M.B.; Wallace, H.M.; Xu, C.-Y.; Joseph, S.; Dunn, P.K.; Thu, T.; Nguyen, N.; Hosseini Bai, S. Biochar Co-Applied with Organic Amendments Increased Soil-Plant Potassium and Root Biomass but Not Crop Yield. *J. Soils Sediments* **2021**, *21*, 784–798. [[CrossRef](#)]
43. Park, J.-H.; Kang, S.-W.; Yun, J.-J.; Lee, S.-G.; Kim, S.-H.; Beak, J.-S.; Cho, J.-S. Effects of Co-Application of Biochars and Composts on Lettuce Growth. *Korean J. Soil Sci. Fertil.* **2021**, *54*, 151–160. [[CrossRef](#)]
44. Wang, M.; Wang, C.; Lan, X.; Abid, A.A.; Xu, X.; Singla, A.; Sardans, J.; Llusà, J.; Peñuelas, J.; Wang, W. Coupled Steel Slag and Biochar Amendment Correlated with Higher Methanotrophic Abundance and Lower CH₄ Emission in Subtropical Paddies. *Environ. Geochem. Health* **2020**, *42*, 483–497. [[CrossRef](#)] [[PubMed](#)]
45. Mawof, A.; Prasher, S.O.; Anderson, E.C.; Nzediegwu, C. Barley Straw Biochar and Compost Affect Heavy Metal Transport in Soil and Uptake by Potatoes Grown under Wastewater Irrigation. *Sustainability* **2022**, *14*, 5665. [[CrossRef](#)]
46. Wang, H.; Dai, J.; Chen, H.; Wang, F.; Zhu, Y.; Liu, J.; Zhou, B.; Yuan, R. Adsorption of Phosphate by Mg/Fe-Doped Wheat Straw Biochars Optimized Using Response Surface Methodology: Mechanisms and Application in Domestic Sewage. *Environ. Eng. Res.* **2022**, *28*, 210602. [[CrossRef](#)]
47. Yang, W.; Feng, G.; Miles, D.; Gao, L.; Jia, Y.; Li, C.; Qu, Z. Science of the Total Environment Impact of Biochar on Greenhouse Gas Emissions and Soil Carbon Sequestration in Corn Grown under Drip Irrigation with Mulching. *Sci. Total Environ.* **2020**, *729*, 138752. [[CrossRef](#)]
48. Van Zwieten, L.; Kimber, S.; Downie, A.; Morris, S.; Petty, S.; Rust, J.; Chan, K.Y. A Glasshouse Study on the Interaction of Low Mineral Ash Biochar with Nitrogen in a Sandy Soil. *Aust. J. Soil Res.* **2010**, *48*, 569–576. [[CrossRef](#)]
49. NIAS. *Prescription of Fertilizer Use by Crop*; National Institute of Agricultural Sciences: Wanju, Korea, 2019; ISBN 978-89-480-6048-5 93520.
50. Zeng, W.Z.; Xu, C.; Wu, J.W.; Huang, J.S.; Ma, T. Effect of Salinity on Soil Respiration and Nitrogen Dynamics. *Ecol. Chem. Eng. S* **2013**, *20*, 519–530. [[CrossRef](#)]
51. Maucieri, C.; Zhang, Y.; McDaniel, M.D.; Borin, M.; Adams, M.A. Short-Term Effects of Biochar and Salinity on Soil Greenhouse Gas Emissions from a Semi-Arid Australian Soil after Re-Wetting. *Geoderma* **2017**, *307*, 267–276. [[CrossRef](#)]
52. Haque, M.M.; Kim, S.Y.; Ali, M.A.; Kim, P.J. Contribution of Greenhouse Gas Emissions during Cropping and Fallow Seasons on Total Global Warming Potential in Mono-Rice Paddy Soils. *Plant Soil* **2015**, *387*, 251–264. [[CrossRef](#)]
53. RDA (Rural Development Administration). *Agricultural Science and Technology Research and Analysis Criteria*; Sambo Printing Company: Des Plaines, IL, USA, 2012; ISBN 978-89-480-1649-9.
54. Lee, H.I.; Yim, Y.; Bae, K.; Park, S. Role of Electron Acceptor-Donor on Elemental Mercury Removal Using Nano-Silver-Plated Activated Carbons Complexes. *Compos. Res.* **2018**, *31*, 76–81. [[CrossRef](#)]
55. Chen, K.; Peng, J.; Li, J.; Yang, Q.; Zhan, X.; Liu, N.; Han, X. Stabilization of Soil Aggregate and Organic Matter under the Application of Three Organic Resources and Biochar-Based Compound Fertilizer. *J. Soils Sediments* **2020**, *20*, 3633–3643. [[CrossRef](#)]
56. Bai, S.H.; Reverchon, F.; Xu, C.Y.; Xu, Z.; Blumfield, T.J.; Zhao, H.; Van Zwieten, L.; Wallace, H.M. Wood Biochar Increases Nitrogen Retention in Field Settings Mainly through Abiotic Processes. *Soil Biol. Biochem.* **2015**, *90*, 232–240. [[CrossRef](#)]
57. Liu, Y.; Lu, H.; Yang, S.; Wang, Y. Impacts of Biochar Addition on Rice Yield and Soil Properties in a Cold Waterlogged Paddy for Two Crop Seasons. *Field Crop. Res.* **2016**, *191*, 161–167. [[CrossRef](#)]
58. Amoakwah, E.; Arthur, E.; Frimpong, K.A.; Parikh, S.J.; Islam, R. Soil Organic Carbon Storage and Quality Are Impacted by Corn Cob Biochar Application on a Tropical Sandy Loam. *J. Soils Sediments* **2020**, *20*, 1960–1969. [[CrossRef](#)]
59. Nguyen, B.T.; Phan, B.T.; Nguyen, T.X.; Nguyen, V.N.; Van Tran, T.; Bach, Q.V. Contrastive Nutrient Leaching from Two Differently Textured Paddy Soils as Influenced by Biochar Addition. *J. Soils Sediments* **2020**, *20*, 297–307. [[CrossRef](#)]
60. Zhang, Y.; Hou, W.; Chi, M.; Sun, Y.; An, J.; Yu, N.; Zou, H. Simulating the Effects of Soil Temperature and Soil Moisture on CO₂ and CH₄ Emissions in Rice Straw-Enriched Paddy Soil. *Catena* **2020**, *194*, 104677. [[CrossRef](#)]
61. Duan, M.; Liu, G.; Zhou, B.; Chen, X.; Wang, Q.; Zhu, H.; Li, Z. Effects of Modified Biochar on Water and Salt Distribution and Water-Stable Macro-Aggregates in Saline-Alkaline Soil. *J. Soils Sediments* **2021**, *21*, 2192–2202. [[CrossRef](#)]
62. Woolf, D.; Lehmann, J. Modelling the Long-Term Response to Positive and Negative Priming of Soil Organic Carbon by Black Carbon. *Biogeochemistry* **2012**, *111*, 83–95. [[CrossRef](#)]
63. Lee, S.-I.; Kang, S.-S.; Choi, E.-J.; Gwon, H.-S.; Lee, H.-S.; Lee, J.-M.; Lim, S.-S.; Choi, W.-J. Soil Carbon Storage in Upland Soils by Biochar Application in East Asia. *Korean J. Environ. Agric.* **2021**, *40*, 219–230. [[CrossRef](#)]
64. Uchida, Y.; Moriizumi, M.; Shimotsuma, M. Effects of Rice Husk Biochar and Soil Moisture on the Accumulation of Organic and Inorganic Nitrogen and Nitrous Oxide Emissions during the Decomposition of Hairy Vetch (*Vicia Villosa*) Mulch. *Soil Sci. Plant Nutr.* **2019**, *65*, 409–418. [[CrossRef](#)]
65. Shi, Y.; Liu, X.; Zhang, Q.; Li, G.; Wang, P. Soil & Tillage Research Biochar Rather than Organic Fertilizer Mitigated the Global Warming Potential in a Saline-Alkali Farmland. *Soil Tillage Res.* **2022**, *219*, 105337. [[CrossRef](#)]
66. Dai, Z.; Xiong, X.; Zhu, H.; Xu, H.; Leng, P.; Li, J.; Tang, C.; Xu, J. Association of Biochar Properties with Changes in Soil Bacterial, Fungal and Fauna Communities and Nutrient Cycling Processes. *Biochar* **2021**, *3*, 239–254. [[CrossRef](#)]
67. Van Zwieten, L.; Singh, B.P.; Kimber, S.W.L.; Murphy, D.V.; Macdonald, L.M.; Rust, J.; Morris, S. An Incubation Study Investigating the Mechanisms That Impact N₂O Flux from Soil Following Biochar Application. *Agric. Ecosyst. Environ.* **2014**, *191*, 53–62. [[CrossRef](#)]
68. Liu, Q.; Zhang, Y.; Liu, B.; Amonette, J.E.; Lin, Z.; Liu, G.; Ambus, P.; Xie, Z. How Does Biochar Influence Soil N Cycle? A Meta-Analysis. *Plant Soil* **2018**, *426*, 211–225. [[CrossRef](#)]

69. Liu, L.; Shen, G.; Sun, M.; Cao, X.; Shang, G.; Chen, P. Effect of Biochar on Nitrous Oxide Emission and Its Potential Mechanisms. *J. Air Waste Manag. Assoc.* **2014**, *64*, 894–902. [[CrossRef](#)] [[PubMed](#)]
70. Han, J.; Zhang, A.; Kang, Y.; Han, J.; Yang, B.; Hussain, Q.; Wang, X.; Zhang, M.; Khan, M.A. Biochar Promotes Soil Organic Carbon Sequestration and Reduces Net Global Warming Potential in Apple Orchard: A Two-Year Study in the Loess Plateau of China. *Sci. Total Environ.* **2022**, *803*, 150035. [[CrossRef](#)] [[PubMed](#)]
71. Cao, H.; Jia, M.; Xun, M.; Wang, X.; Chen, K.; Yang, H. Nitrogen Transformation and Microbial Community Structure Varied in Apple Rhizosphere and Rhizoplane Soils under Biochar Amendment. *J. Soils Sediments* **2021**, *21*, 853–868. [[CrossRef](#)]
72. Qian, J.; Liu, J.; Wang, P.; Wang, C.; Hu, J.; Li, K.; Lu, B.; Tian, X.; Guan, W. Effects of Riparian Land Use Changes on Soil Aggregates and Organic Carbon. *Ecol. Eng.* **2018**, *112*, 82–88. [[CrossRef](#)]
73. Oo, A.Z.; Gonai, T.; Sudo, S.; Win, K.T.; Shibata, A. Surface Application of Fertilizers and Residue Biochar on N₂O Emission from Japanese Pear Orchard Soil. *Plant Soil Environ.* **2018**, *64*, 597–604. [[CrossRef](#)]
74. Feng, Z.; Zhu, L. Impact of Biochar on Soil N₂O Emissions under Different Biochar-Carbon/Fertilizer-Nitrogen Ratios at a Constant Moisture Condition on a Silt Loam Soil. *Sci. Total Environ.* **2017**, *584*, 776–782. [[CrossRef](#)]
75. Li, J.; Wang, S.; Luo, J.; Zhang, L.; Wu, Z.; Lindsey, S. Effects of Biochar and 3,4-Dimethylpyrazole Phosphate (DMPP) on Soil Ammonia-Oxidizing Bacteria and NosZ-N₂O Reducers in the Mitigation of N₂O Emissions from Paddy Soils. *J. Soils Sediments* **2021**, *21*, 1089–1098. [[CrossRef](#)]