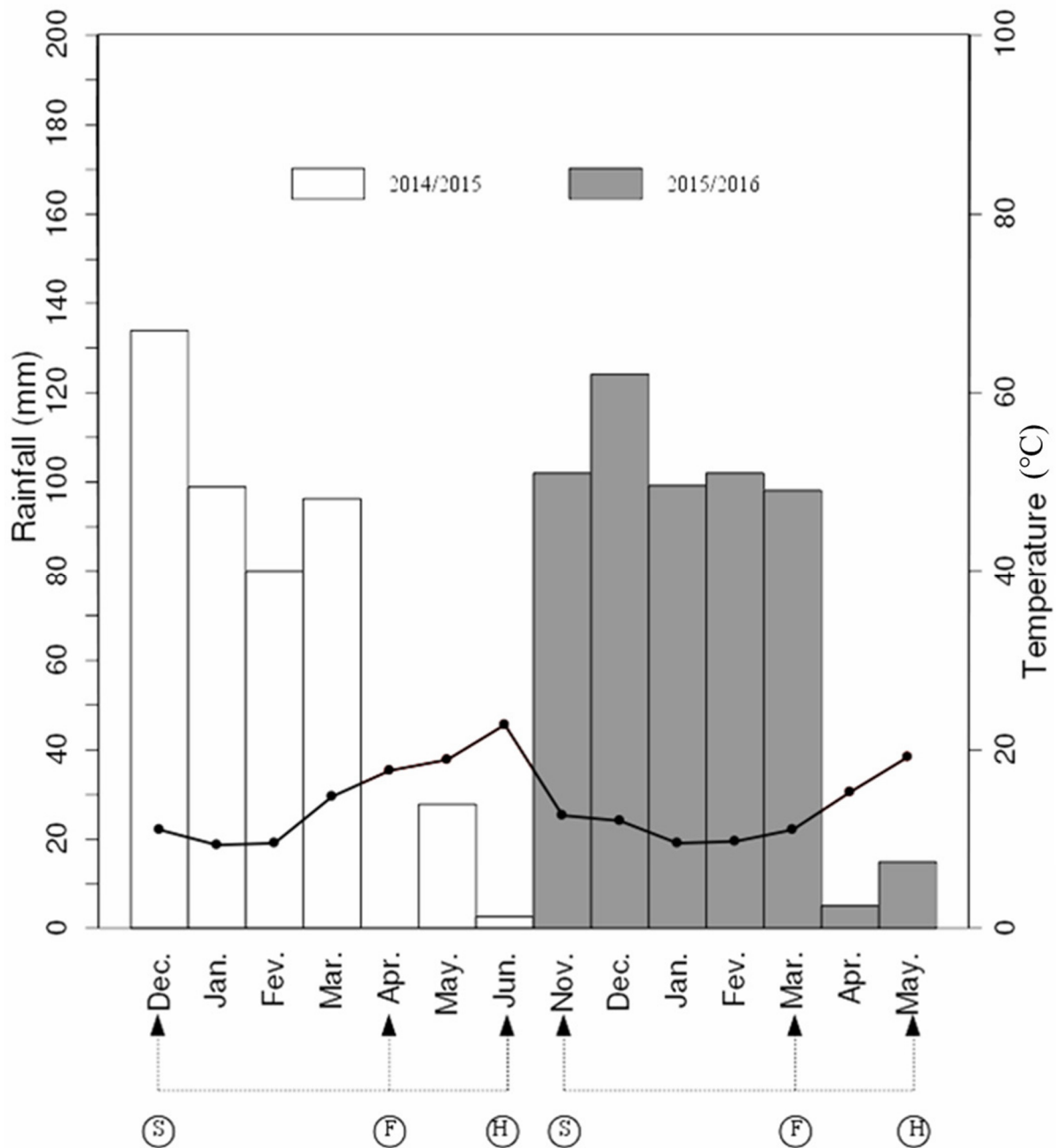


**Figure S1**  
**Electronic Supplementary Material: Figure S1 and S2**

**Article title:** Nitrogen and phosphorus uptake by intercropping chickpea and durum wheat in low nitrogen alkaline soil

**Journal name:** Agronomy



**Figure S1:** Ombrothermic diagram recorded from December 2014 to June 2015 and from November 2015 to May 2016 at the El Harrach weather station, 10 km from Algiers, Algeria. Bar graph represents rainfall (mm) and line graph shows average monthly temperatures (°C). S, F and H indicating sowing, full flowering stage and harvest of durum wheat and chickpea, respectively.

**Figure S2**



**Figure S2:** Crop plots of field experiment illustrate the growth development of sole cropped chickpea (A) and intercropped durum wheat at flowering (B), full flowering (C) and harvest stage (D).