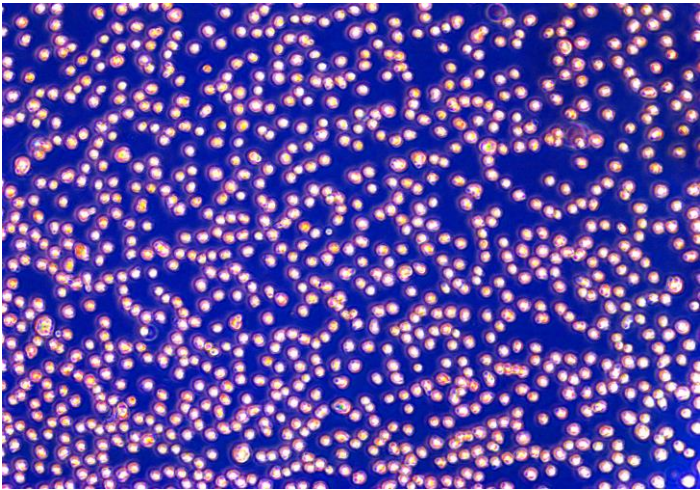
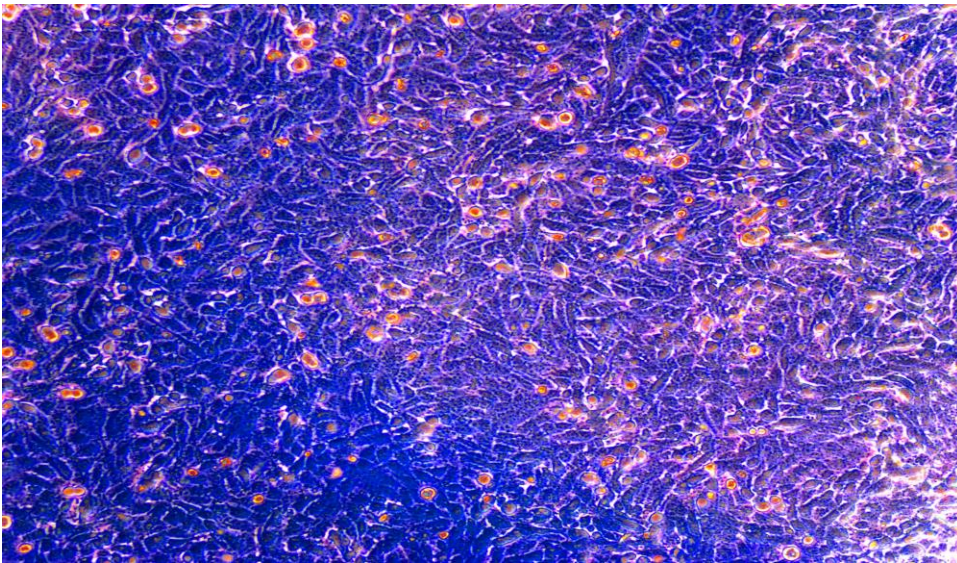


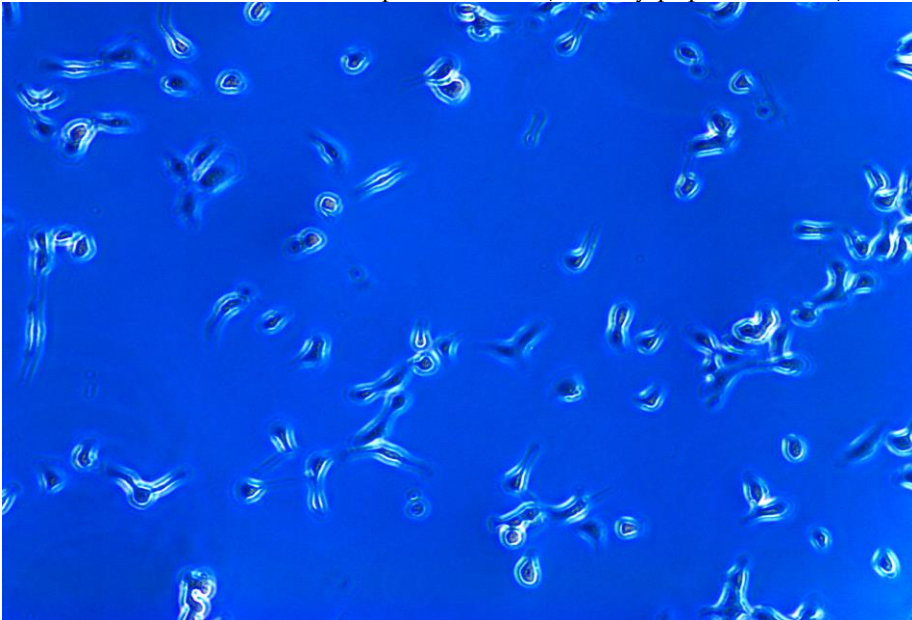
Supplementary Figures S1–S3:



Dissociated endometrial epithelial cells

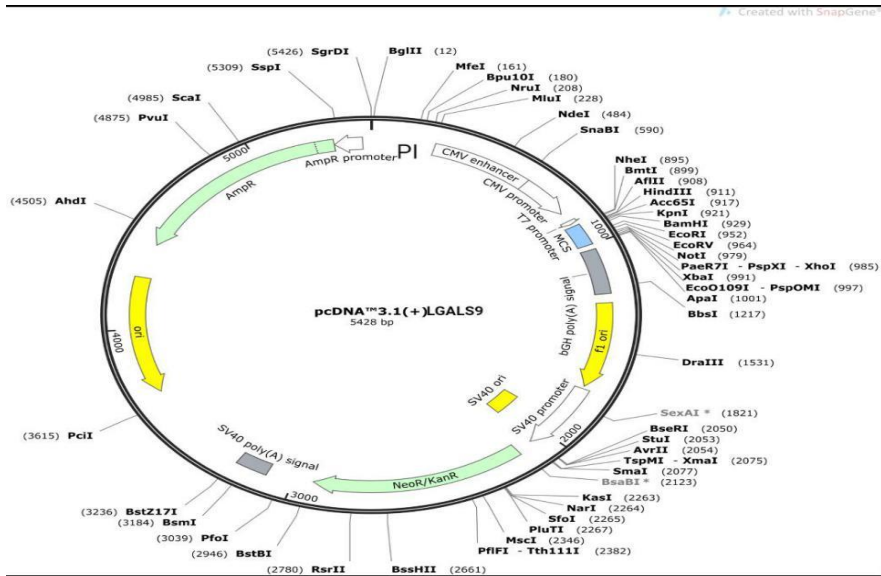


Adherent culture endometrial epithelial cells (densely populated cells)



Sparsely populated adherent endometrial epithelial cells

Supplementary Figure S4. The recombinant DNA cloning vector of LGALS9.



Supplementary Table S1

Table S1. Primers sequence used for miRNA and si-

PRIMER	SEQUENCE(5'-3')
bta-miR-24-3p mimics	Sense -UGGCUCAGUUCAGCAGGAACAGTT- Antisense -GUUCCUGCUGAACUGAGCCAUUTT-
Mimic Negative control	Sense -UUCUCCGAACGUGUCACGUTT- Antisense -ACGUGACACGUUCGGAGAATT-
bta-miR-24-3p inhibitors	Sense -CUGUCCUGCUGAACUGAGCCA-
Inhibitor Negative control	Sense- -CAGUACUUUUGUGUAGUACAA-
Si-LGALS9	Sense -GGAAGACACACAUGCCUUUTT- Antisense -AAAGGCAUGUGUGUCUUCCTT-
Si-NC	Sense -UUCUCCGAACGUGUCACGUTT- Antisense -ACGUGACACGUUCGGAGAATT-

Supplementary Table S2

Table S2. Primers used for quantitative reverse transcription PCR (RT-qPCR).

GENE	PRIMER SEQUENCE(5'-3')	TM(°C)	SIZE(bp)
IL-1β	F -ACCAGCTCTACAACAAAAGA-	54	157

IL-6	R -TTGCACTTTACTGACTGCAC- F -AGGCAGACTACTTCTGACCA- R -TACTCCAGAAGACCAGCAGT	55	160
IL-8	F-CTGCAGTTCTGTCAAGGATG- R-CAACCTTCTGCACCCACTTT-	55	160
TNFα	F-CAGTCTCCTACCAGACCAAG-	57	160
LGALS9	R-CAGCATAGTCCAGGTAGTCC- F-CTTTCATCACCACCATTCTG- R-ATGTGGAACCTCTGAGCAC-	60	160
TLR4	F-AGACGACACATTTTCAGGGCC-	60	160
TRAF6	R-CCAGGTTGGGCAGGTTAGAA- F-GAGACAGGTTTCTTGTGACAAC-	57	160
IRAK4	R-TGGCAACCAAAAGTACTGAATG- F-CAAGTGATGGAGATGACCTC-	57	160
MyD88	R-TCTAGCAATAACTGAGGTTC- F-CGCGACGACGTGCTGATGGA- R-TCGCTGGGGCAGTAGCAGAT-	60	160
β-actin	F-GACATCAAGGAGAAGCTCTG- R-TGGAATTGAAGGTAGTTTCG-	60	120
