

Supplementary Figure S1

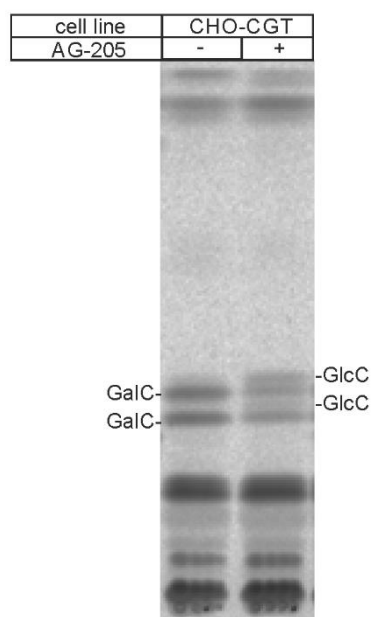


Figure S1. CGT cells metabolically labelled with [14C]-serine.

HPTLC of [14C]-serine labelled CHO-CGT cells treated with DMSO (-) or 10 μ M AG-205 (+). The TLC plate was developed twice in the solvent system chloroform/methanol/water (144:25:2.8; v/v/v).