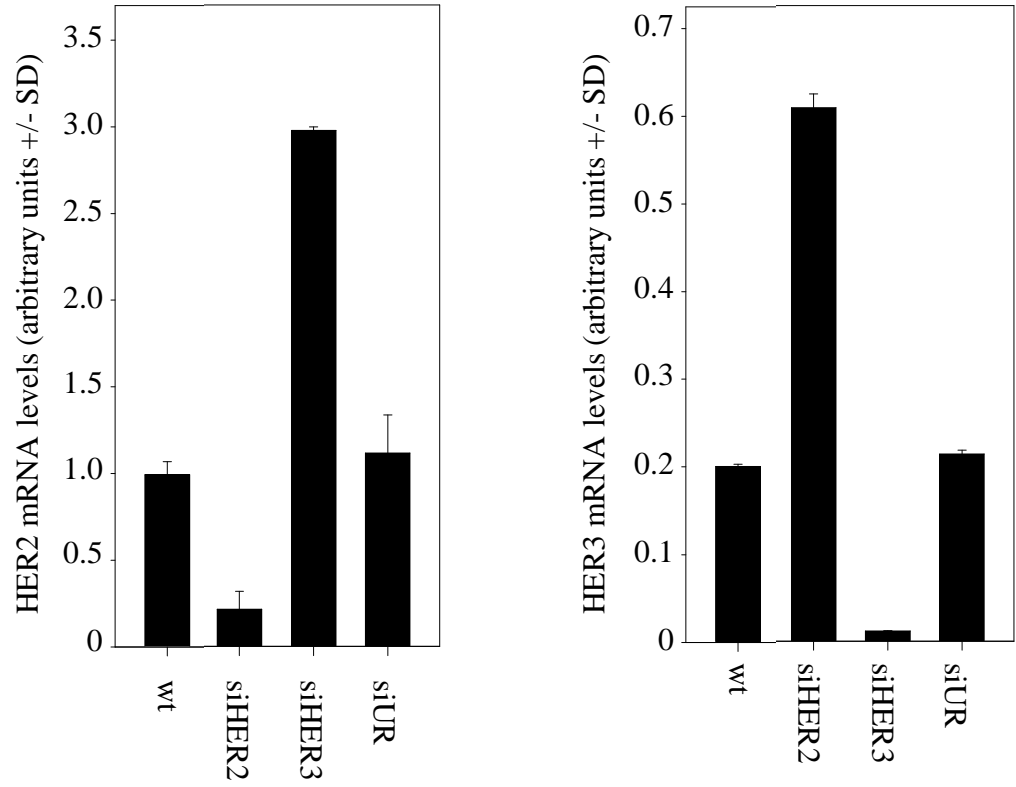
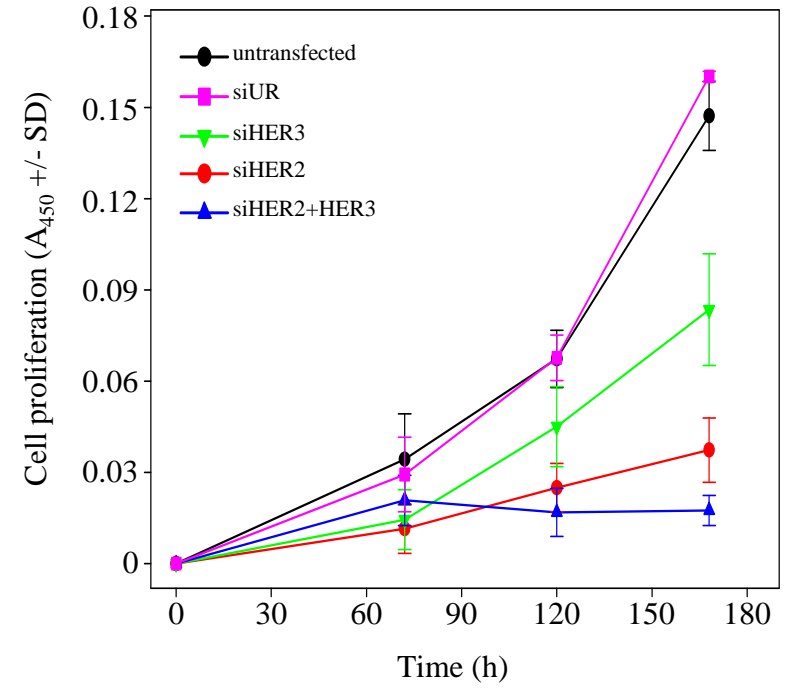
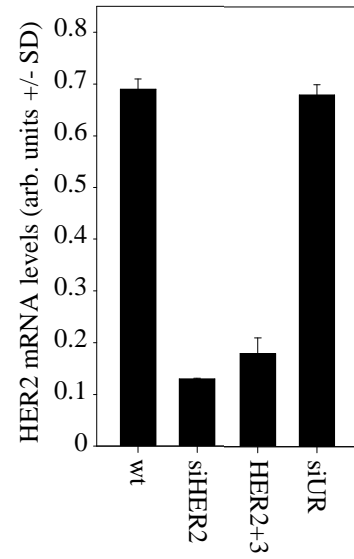
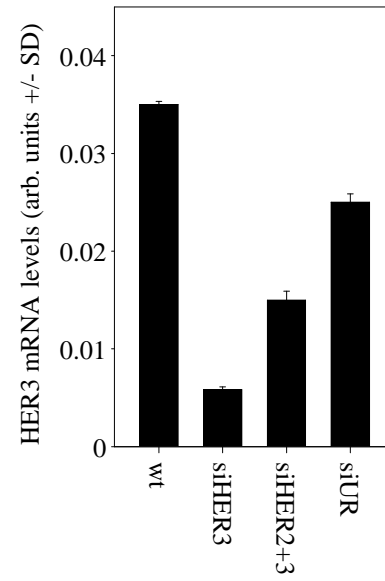
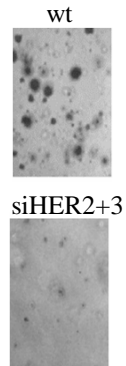
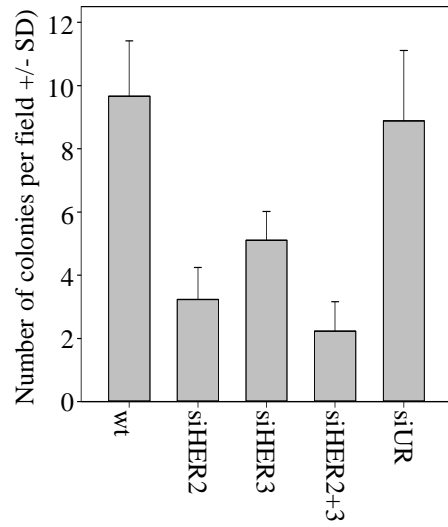
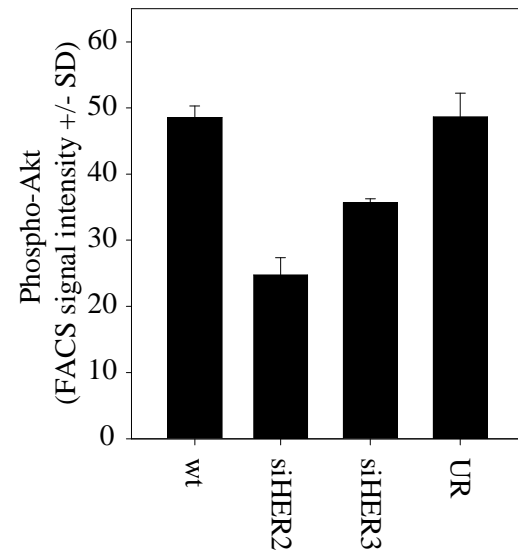
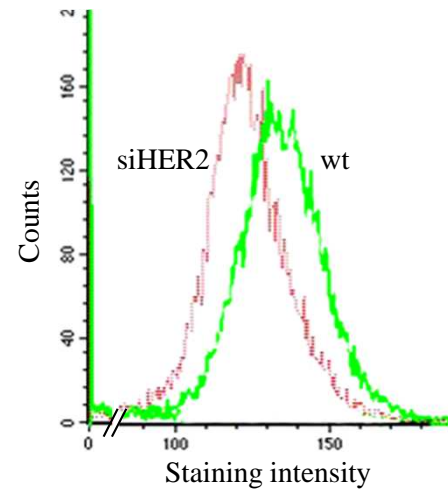
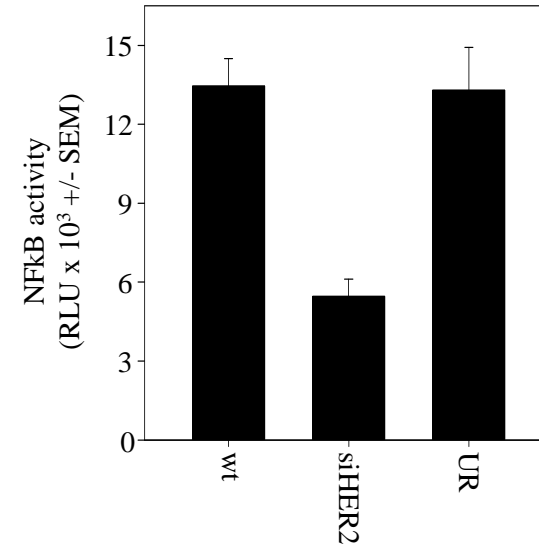


A**B**

A**B****C**

A**B****C**

Suppl. Table 1: siRNA sequences

siRNA	Manufacturer	Sequence (1=sense; 2=antisense)
siHer1_55	Thermo Scientific, Hamburg	1:GGUGGUCCUUGGGAAUUUUGdTdT 2:CAAUUUCCCAAGGACCACCCdTdT
siHer2_08	Thermo Scientific, Hamburg	1:GCCUGAAZAZGZGAACCAAGdTdT 2:CUGGUUCACAUAUUCAGGCdTdT
siHer3_02	Thermo Scientific, Hamburg	1:CCUUGAGAUUGGUCUCCAGGdTdT 2:CGUGAGCACAAUUCUCAAGGdTdT
siSAT1	Sigma-Aldrich, Taufkirchen	1:GCUUCAAGAUUGUUAUCCAUDTdT 2:AUGAUACACAUUCUUGAAGCdTdT
siUR (siLuc3)	Thermo Scientific, Hamburg	1:CUUACGCUCGAGUACUUCGAdTdT 2:UCGAAAGUACUCAGCGUAAAGdTdT