

Supplementary Materials

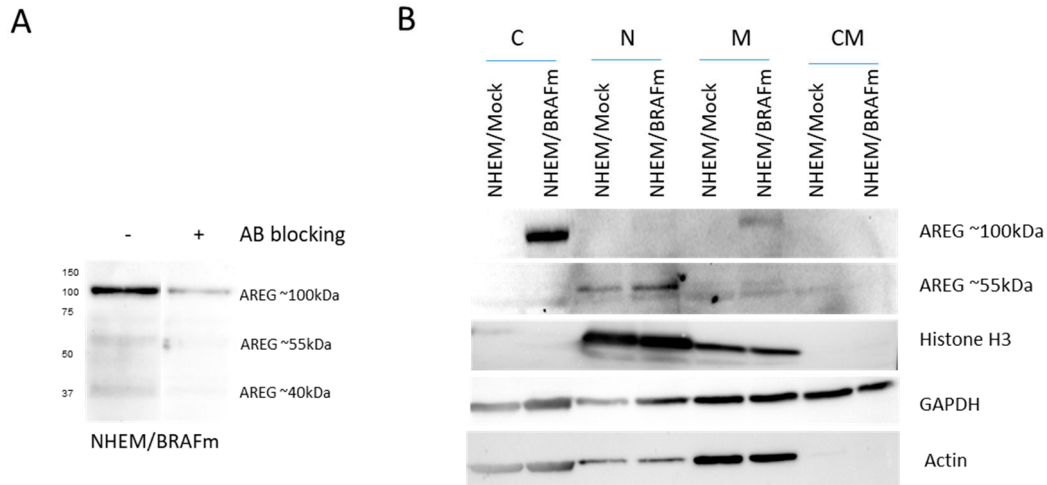


Figure 1. Analysis of AREG variants and its AREG localization. AREG antibody was preincubated with recombinant AREG (AB blocking) or not pretreated and used in a western blot of NHEM/BRAFm protein lysate. The ~100kDa, ~55kDa, and ~40kDa AREG bands were weaker using the preincubated AREG antibody (A). Fractioning of cell lysates of NHEM/Mock and NHEM/BRAFm cells in nucleus (N), cytoplasm (C), mitochondrion (M) and cytoplasmic membrane (CM) and subsequent Western blot analysis of AREG protein. Histone H3 served as a nuclear control, GAPDH and β -actin as cytoplasm controls. Two different variants of AREG (100kDa, 55kDa) are shown (B).