

Supplementary figures

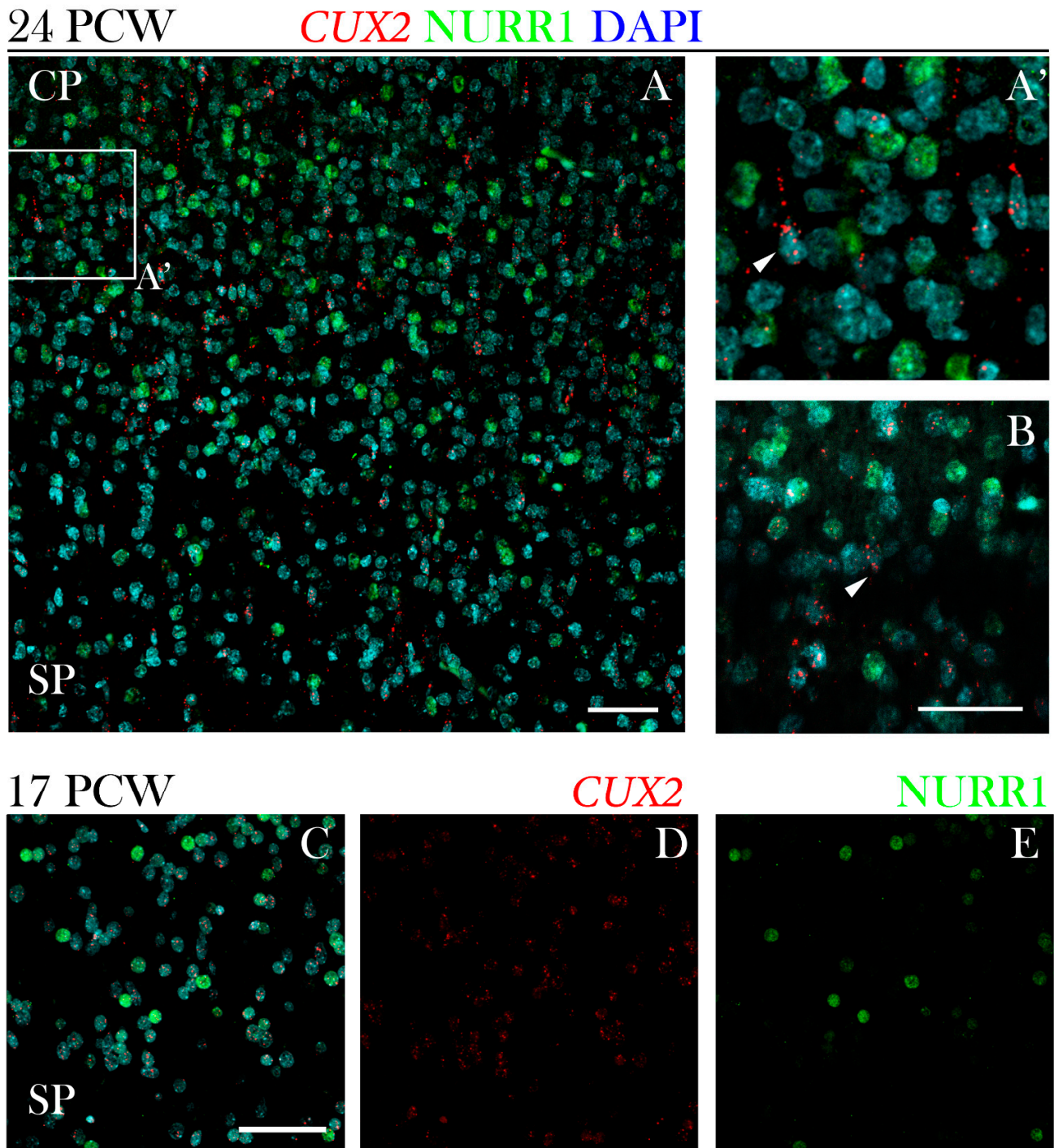
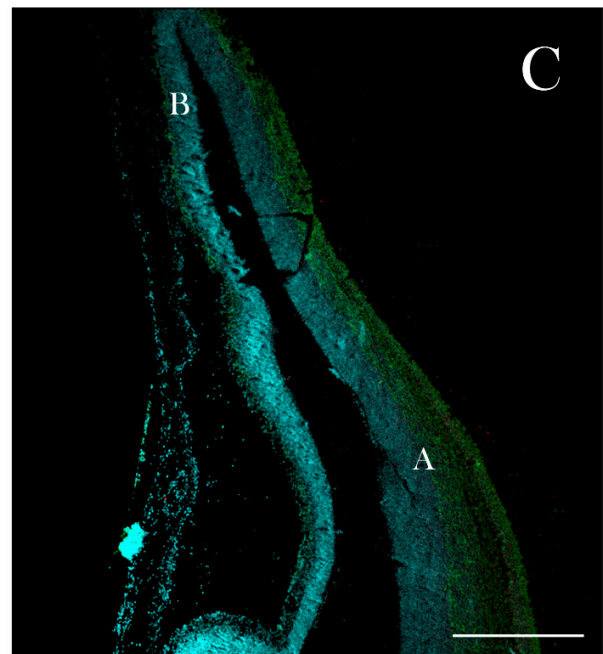
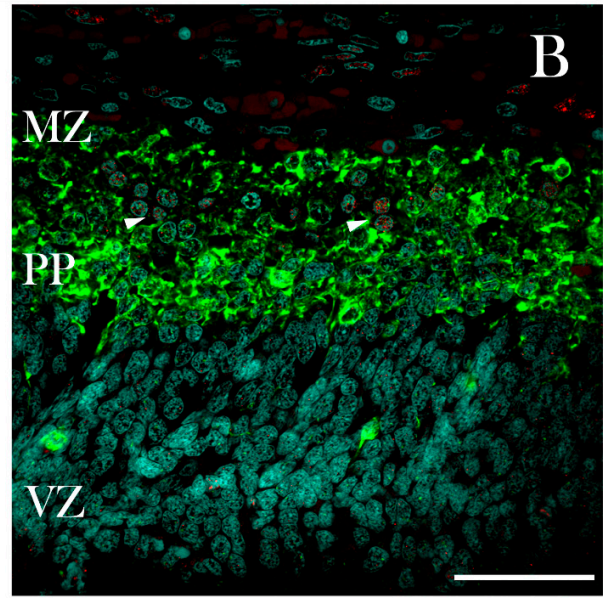
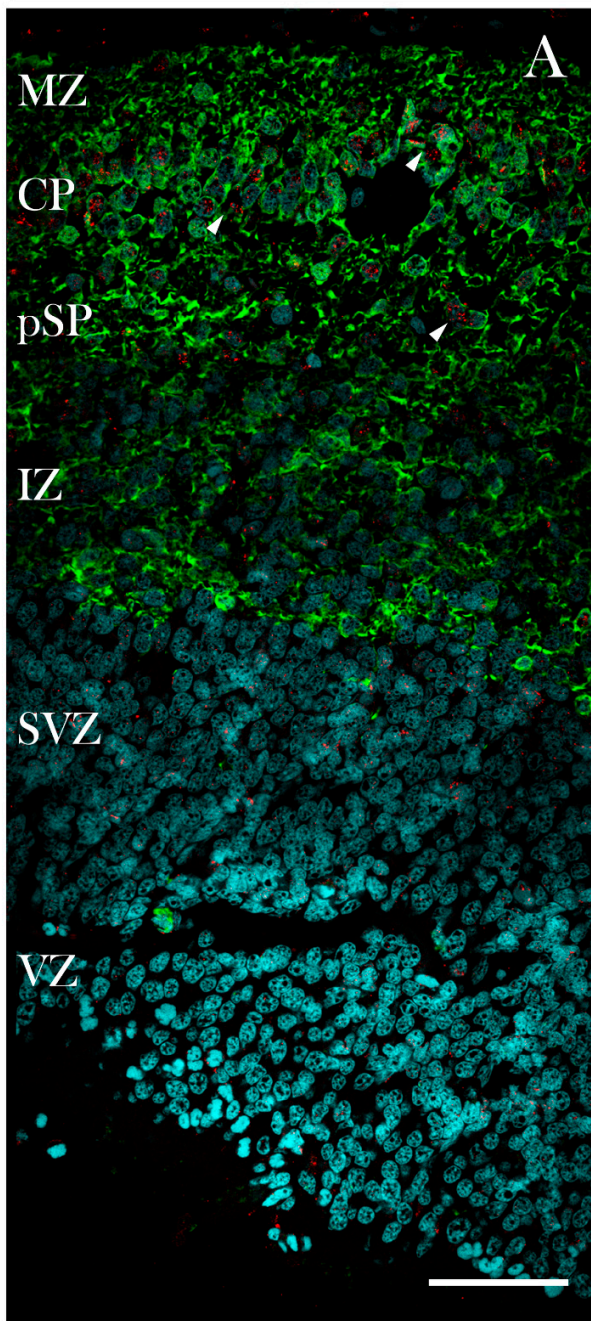


FIGURE S1: *CUX2* mRNA is undetectable in *Nurr1* expressing SP neurons at 17 and 24 PCW. *CUX2* mRNA (red) was analyzed on coronal section of developing neocortex that were co-

immunostained with SP marker NURR1 (green) and DAPI (blue) at 17 and 24 PCW. Co-expression between NURR1 expressing SP neurons and *CUX2* mRNA was not detected. White arrowheads mark *CUX2* mRNA expressing cell. Scale = 50 μ m.

8 PCW

CUX2 **DCX** **DAPI**



38 PCW

CUX2 DCX DAPI

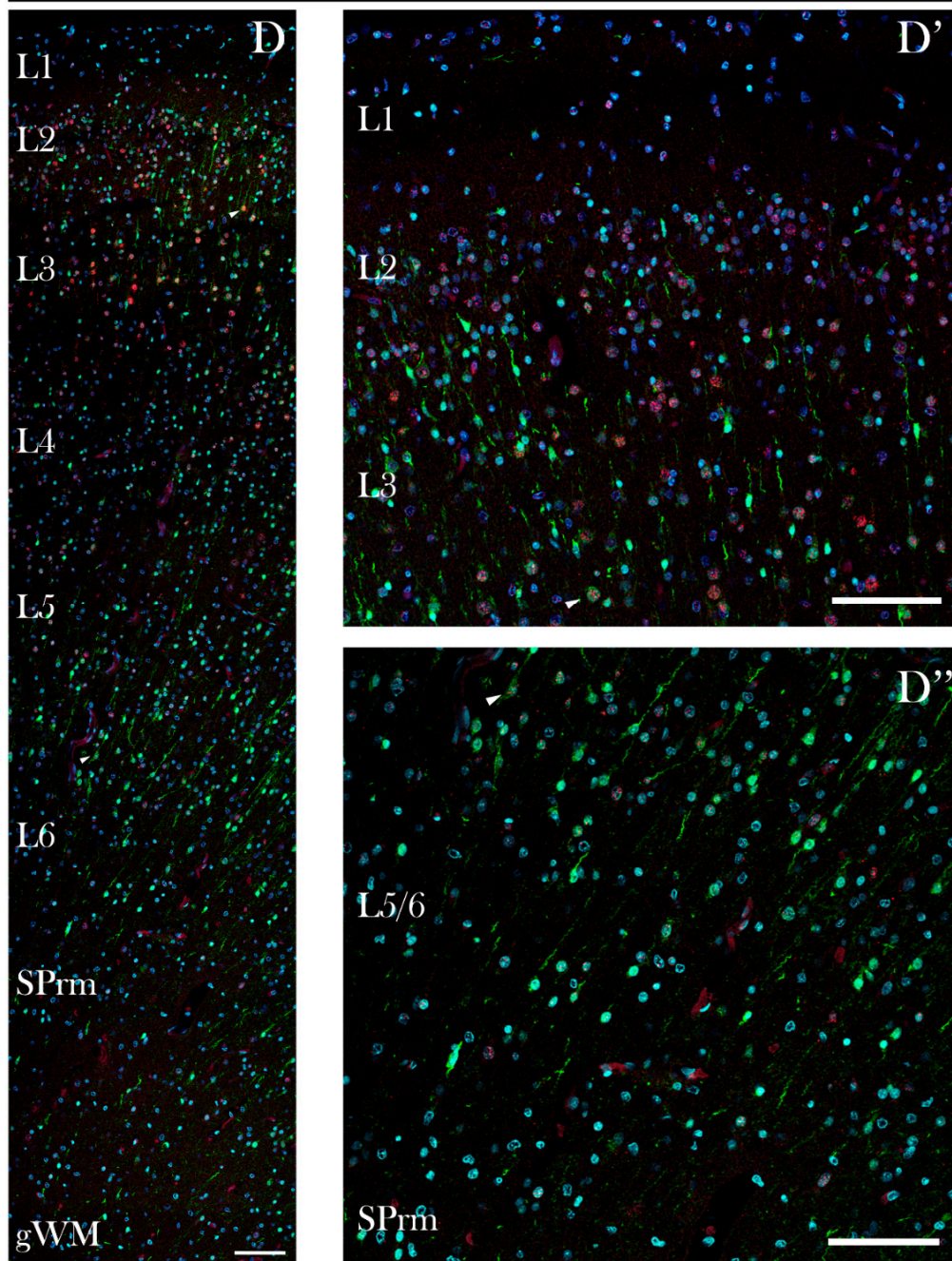


FIGURE S2: CUX2 is expressed in DCX migratory neurons at 8 and 38 PCW. Developing frontal neocortex was immunostained for CUX2 (red), marker of migratory neurons DCX (green) and DAPI (blue). CUX2⁺ nuclei were co-expressed with DCX at 8 PCW (A-C) and 38 PCW (D,D',D''). CUX2⁺ nuclei (white arrowheads) are depicted in the CP and pSP of ventrolateral cortex (A) at 8 PCW, as well as in the preplate (PP) of dorsolateral cortex (B). Images were taken

in the neocortical anlage as shown in (C). Co-localization of DCX and CUX2 at 38 PCW in the frontal cortex (D). Note that cortical cells especially in the deep cortical layers, maintain DCX expression. Scales = 50 μm (D); 100 μm (C).