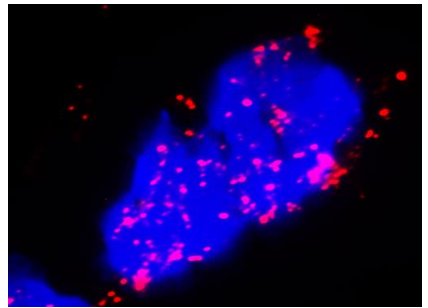
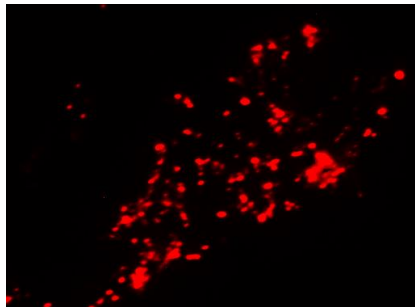
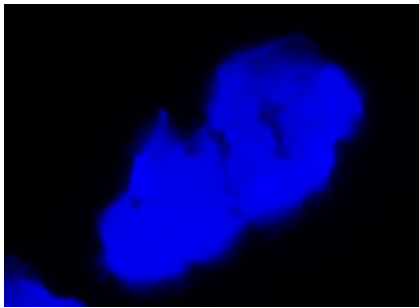
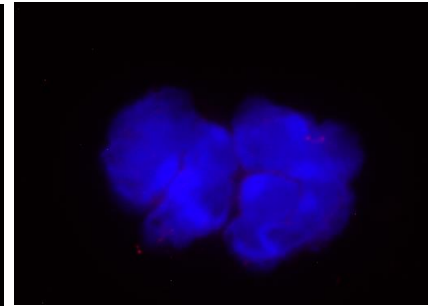
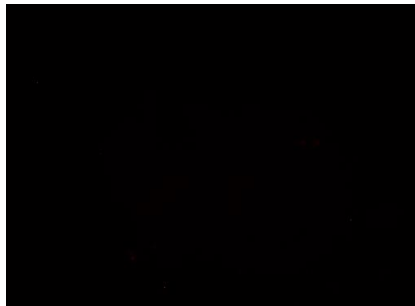
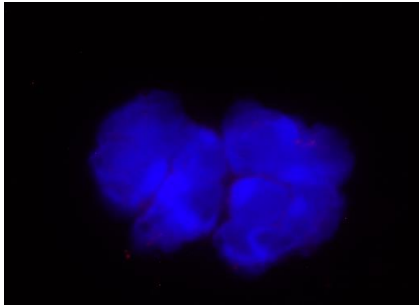
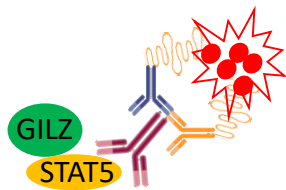


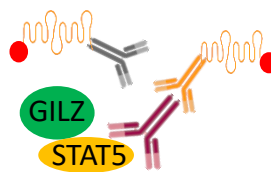
A

Positive
Ctrlnegative
Ctrl

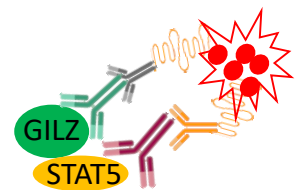
B



Positive control



Negative control



GILZ/STAT5 interaction

Figure S1. In situ proximity ligation assay (PLA): A. positive and negative controls (Ctrl) in untreated PMNs, using an anti-STAT5 antibody. B. Schematic representation of the technique: Minus and Plus anti-rabbit PLA probes were used against the same anti-STAT5 Ab in the positive control, detecting STAT5 staining. Plus anti-goat and Minus anti-rabbit PLA probes were used in the negative control in which only anti-STAT5 Ab was added. GILZ and STAT5 interaction can be detected as depicted in figure, by using both antibodies with Plus anti-goat and Minus anti-rabbit PLA probes.

Figure S1