

Figure S1: TLR-2, -4, -5, -7, -9 gene expression in HLCs and adult hepatocytes (Heps) evaluated by RT-PCR.

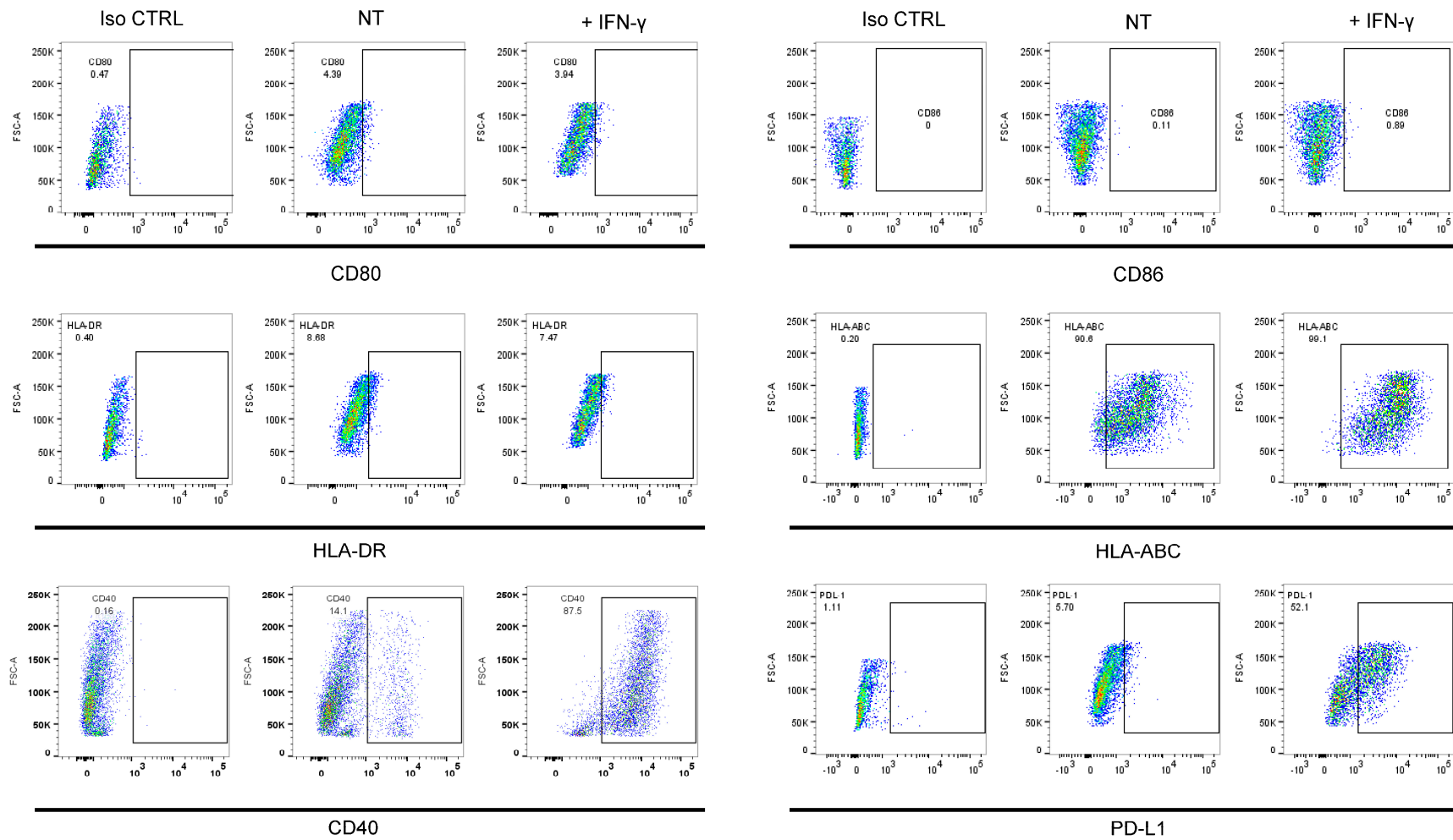


Figure S2: Representative dot plots showing the expression of the indicated markers in NT and INF- γ -pre-treated HLCs.

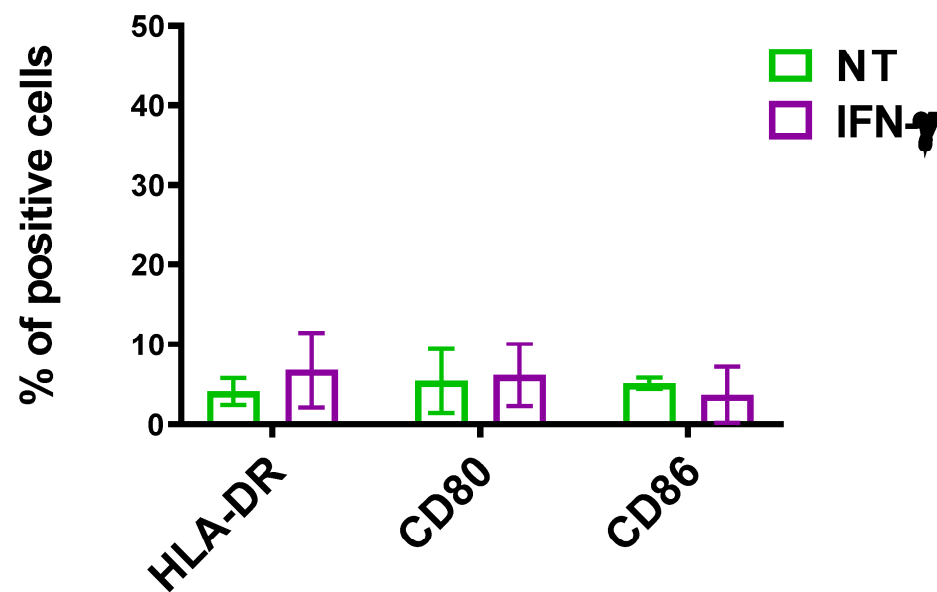


Figure S3: Expression of CD80, CD86 and HLA-DR in NT and IFN- γ -pre-treated HLCs. Data are expressed as mean \pm SD of 6 independent experiments with one donor per experiment.

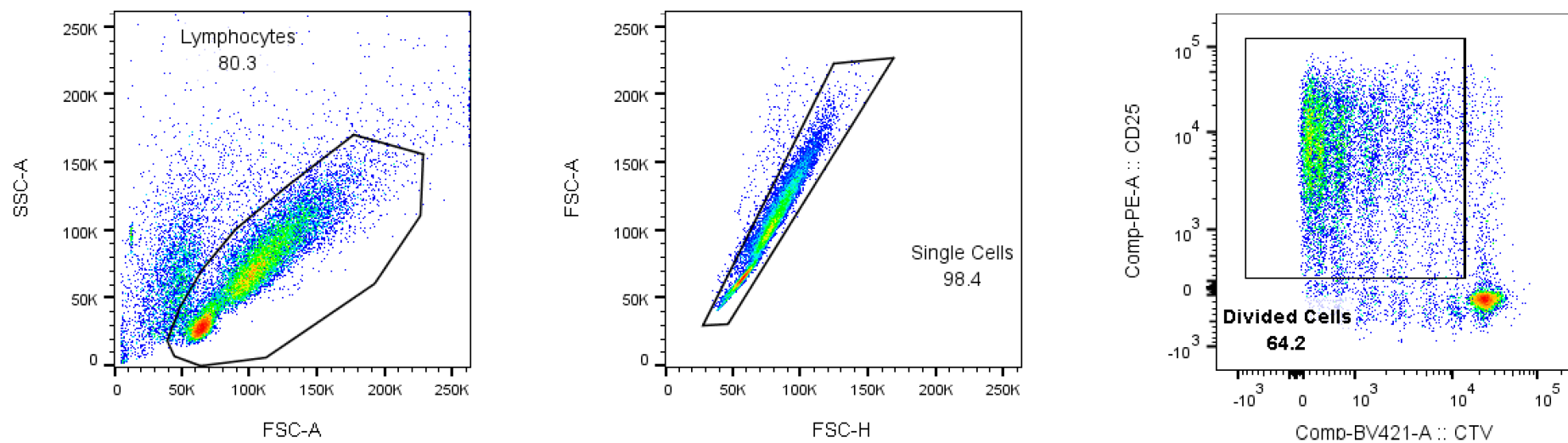


Figure S4: Gating strategy used to evaluate the % of divided cells.

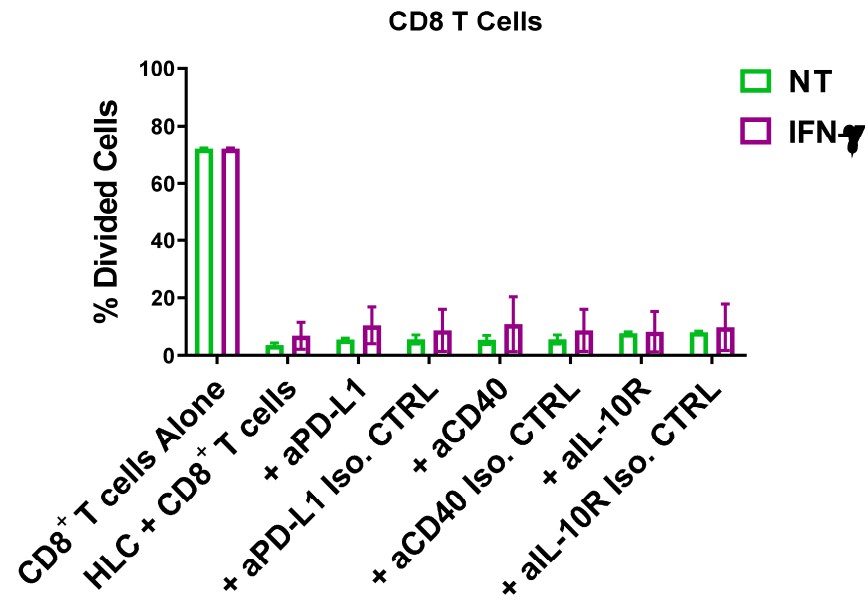


Figure S5: Quantification for percentage of divided CD8-T cells activated with α CD3/CD28 beads and co-cultured with HLCs in the presence of α PD-L1, α CD40 or α IL-10R. Data are expressed as mean \pm SD of 3 independent experiments, with one donor per experiment, in duplicate.

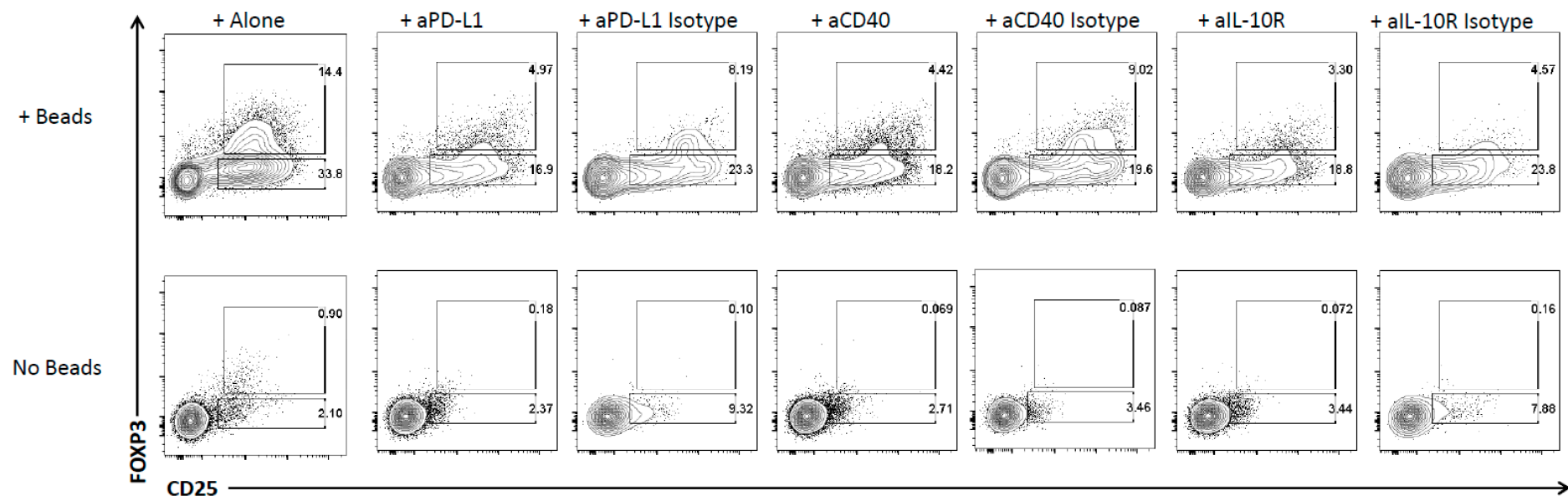


Figure S6: Representative dot plots of FoxP3 expression in CD4⁺ cells activated with α CD3/CD28 beads and co-cultured with HLCs in the presence of α PD-L1, α CD40 or α IL-10R and the cognate isotype controls.