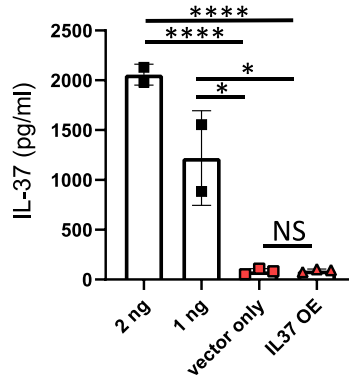
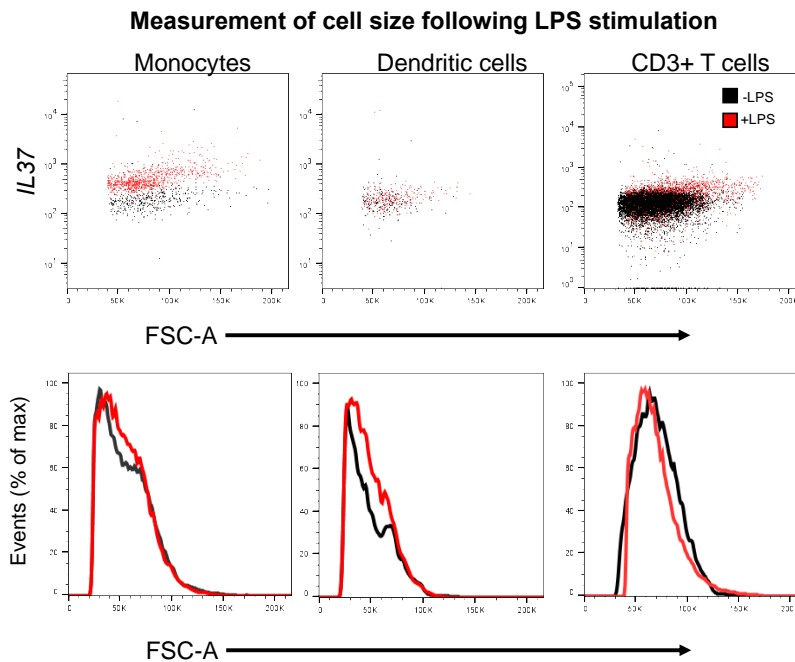


## Supplemental Figures



**Supplemental Figure S1. IL-37 secretion by *IL37* OE Jurkat cells.** ELISA analysis of IL-37 in the supernatant of vector control and *IL37* OE Jurkat cells. Recombinant human IL-37 controls at 2 ng/ml and 1 ng/ml were used as positive controls. Small horizontal lines indicate mean  $\pm$  s.e.m.. \* $P < 0.05$ ; \*\*\*\* $P < 0.0001$  (Student's  $t$  test).



**Supplemental Figure S2. LPS treatment resulted in minor alterations in cell size using Primeflow®.** Top, monocyte, dendritic and CD3+ T lymphocyte cell size +/-LPS treatment was performed by overlaying density plots of -LPS cells over +LPS cells and observing shifts in the forward scatter. Bottom, monocyte, dendritic and CD3+ T lymphocyte cell size +/-LPS treatment was performed by overlaying histograms of -LPS cells over +LPS cells and observing shifts in the forward scatter histograms.