

Figure S1. Differential response SUM 149 and SUM 159 TNBC cell lines to hypoxic conditions. (A-B) Representative SUM 149 and SUM 159 TNBC cell lines were incubated in acute (≤ 24 h) or chronic (≥ 24 h) hypoxic conditions (37°C; 1% O₂; 5% CO₂; 94% N₂). Whole cell lysates were prepared and assessed by western blotting using the antibodies against indicated proteins. Detection of β -actin was used as a loading control.

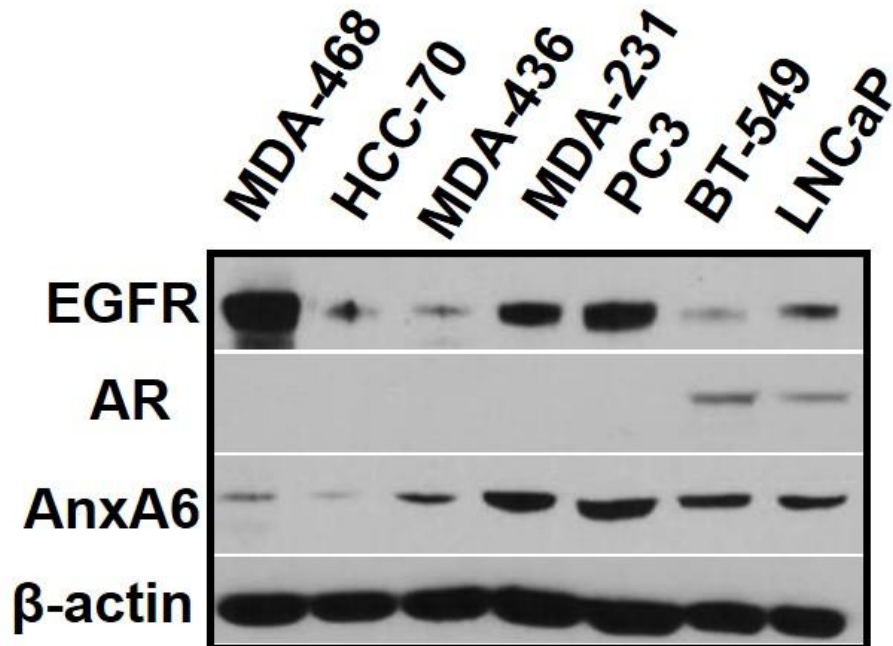


Figure S2. EGFR and AR expression status in TNBC and PCa cell lines. Panel of TNBC (MDA-468, HCC-70, MDA-436, MDA-231, and BT-549) and PCa (PC3 and LNCaP) cell lines. Whole cell lysates were

prepared and assessed by western blotting using the antibodies against EGFR, AR, and AnxA6. Detection of β -actin was used as a loading control.

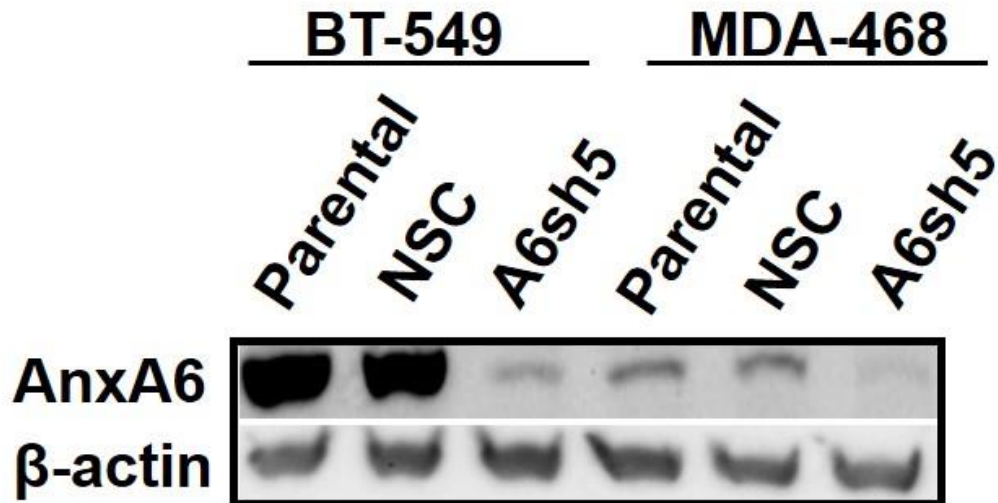


Figure S3. Expression of AnxA6 in TNBC cell lines. Representative western blot showing basal levels of AnxA6 in AnxA6-targeting NSC and A6sh5 cell lines. Whole cell lysates were prepared and assessed by western blotting using the antibodies against AnxA6. Detection of β -actin was used as a loading control.