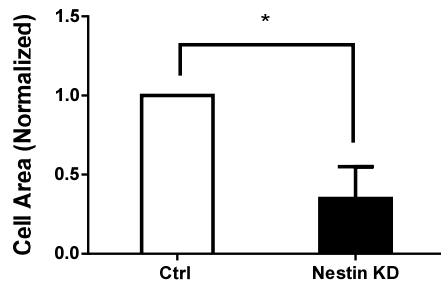
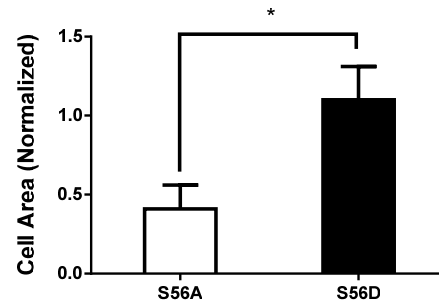
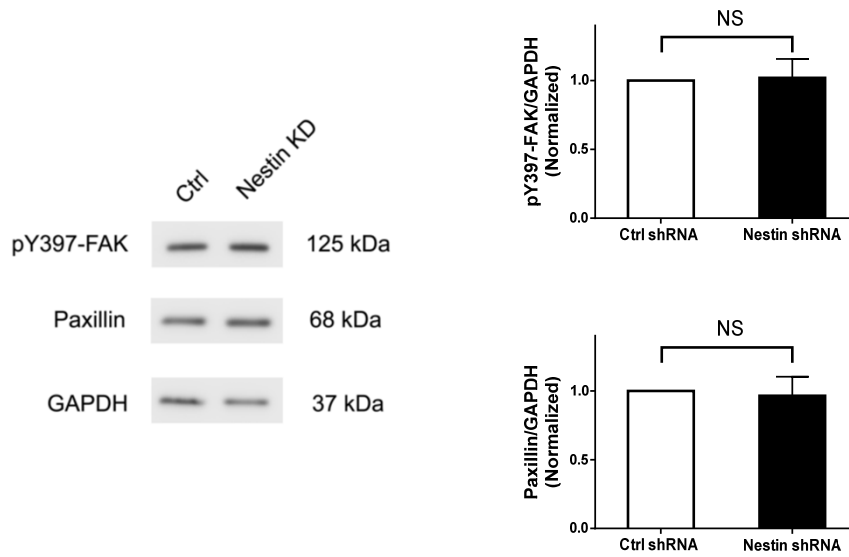
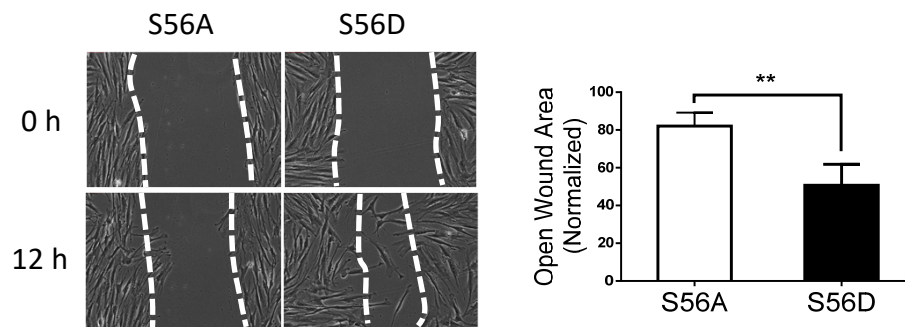


**A****B**

**Figure S1. Role of nestin and its phosphorylation in cell spreading. A.** Nestin KD reduces the areas of whole cell body. **B.** Expression of S56D vimentin increases cell body area of nestin KD cells. Cell body areas are normalized to control cells. Data are mean  $\pm$  SE (n = 25-28 cells). \* P < 0.05



**Figure S2. Nestin KD does not affect expression of pY397-FAK and paxillin in cells.** Protein expression of human airway smooth muscle (HASM) cells stably expressing control (Ctrl) shRNA or nestin shRNA was evaluated by immunoblotting. Data are mean values of experiments from 4 batches of cell culture. Error bars indicate SE. NS, not significant.



**Figure S3. S56D enhances the migration of nestin KD cells.** Nestin KD cells were transfected with S56A or S56D vimentin. Cell migration was evaluated using the wound healing assay. Data are mean  $\pm$  SE (n = 5). P < 0.01.