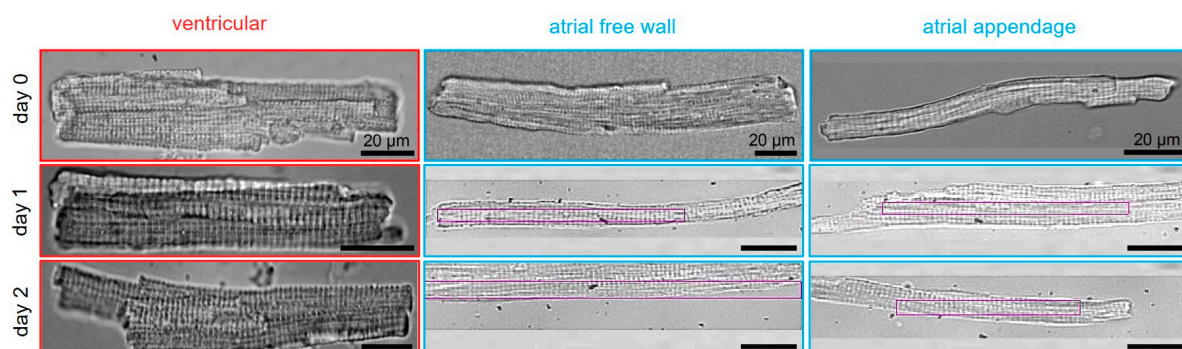


**Table S1.** Composition of solutions.

Concentration					
		Modified Tyrode	Wash solution 1	Wash solution 2	Modified recording Tyrode
NaCl	mM	138	100	100	137
KCl	mM	5.4	15	15	4
MgCl <sub>2</sub>	mM	2	2	2	1
HEPES	mM	10	10	10	10
Glucose	mM	10	10	10	10
BDM	mM	30	30	30	-
KH <sub>2</sub> PO <sub>4</sub>	mM	-	2.5	2.5	
L-Glutamic acid monopotassium salt	mM	-	20	20	-
Taurine	mM	-	20	20	20
Adenosine	mM	-	-	-	5
Creatine	mM	-	-	-	10
L-carnitine	mM	-	-	-	2
NaH <sub>2</sub> PO <sub>4</sub>	mM	0.33	-	-	-
Bovine serum albumin	mg/mL	-	2	10	-
CaCl <sub>2</sub>	mM	0.5	-	0.005	1.8

**Figure S1.**



**Figure S1.** Representative brightfield and phase-contrast microscopy images of living ventricular and atrial CM after isolation at day 0, 1 and 2. All scale bars correspond to 20  $\mu$ m, atrial cells at day 1 and 2 are phase-contrast microscopy images. Regions of interest used to record SL are shown in magenta.