

Figure S1. MS spectrums of K785me1, K1059me1, and K1133me1.

Description	Score	Coverage	# Proteins	# Unique Peptides	# Peptides	# PSMs	MW [kDa]
Histone-lysine N-methyltransferase SETD2 GN=SETD2	1857	19	7	34	38	120	287
FAK Family Kinase-Interacting Protein of 200 kDa GN=FIP200	259	9	3	10	12	14	183

Figure S2. FIP200 was detected in SETD2 pulldown HEK293 lysate by MS analysis.

HEK293 cells were transfected with flag-SETD2 (aa 1148-2564). The cell lysate was pulled down by an anti-flag antibody and then analyzed by MS protein identification. FIP200 was detected in the pulldown lysate.

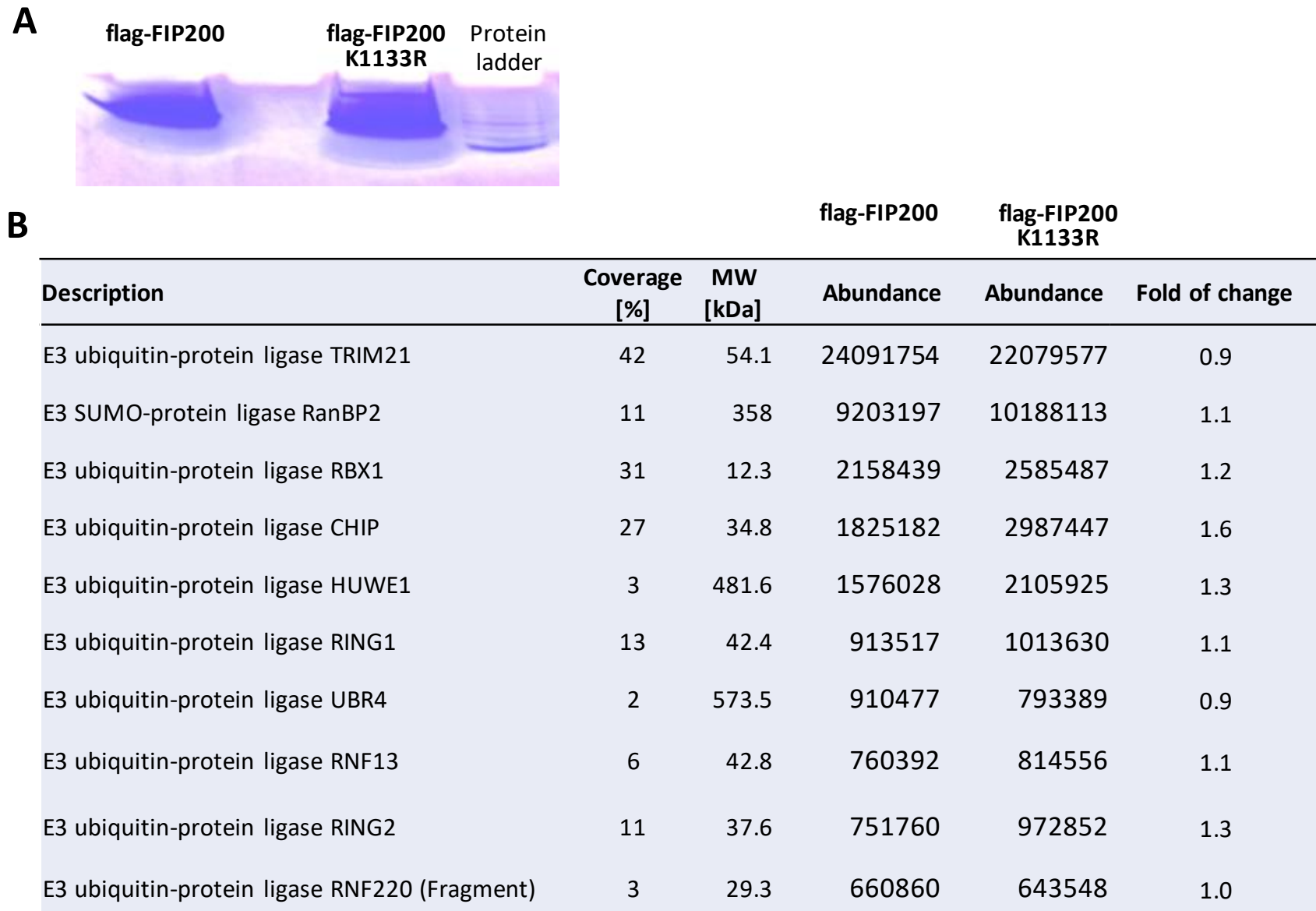


Figure S3. MS assay for E3 ligases of FIP200.

(A) HEK293 cells were transfected with flag-tagged wild-type FIP200 or K1133R mutant. Cell lysates were pulled down by an anti-flag antibody, and the pull-down lysate was analyzed by MS.

(B) The top ten abundant E3 ligases identified by MS.